

# County Health Rankings & Roadmaps

A Healthier Nation, County by County

## 2012 *Rankings* **Texas**



Robert Wood Johnson Foundation



UNIVERSITY OF WISCONSIN

**Population Health Institute**

*Translating Research into Policy and Practice*



## Introduction

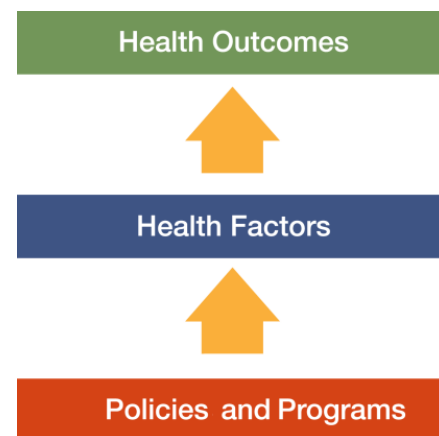
Where we live matters to our health. The health of a community depends on many different factors, including the environment, education and jobs, access to and quality of healthcare, and individual behaviors. We can improve a community's health by implementing effective policies and programs. For example, people who live in communities with smoke-free laws are less likely to smoke or to be exposed to second-hand smoke, which reduces lung cancer risk. In addition, people who live in communities with safe and accessible park and recreation space are more likely to exercise, which reduces heart disease risk.

However, health varies greatly across communities, with some places being much healthier than others. And, until now, there has been no standard method to illustrate what we know about what makes people sick or healthy or a central resource to identify what we can do to create healthier places to live, learn, work and play.

We know that much of what influences our health happens outside of the doctor's office – in our schools, workplaces and neighborhoods. The *County Health Rankings & Roadmaps* program provides information on the overall health of your community and provides the tools necessary to create community-based, evidence-informed solutions. Ranking the health of nearly every county across the nation, the *County Health Rankings* illustrate **what we know** when it comes to what is making communities sick or healthy. The *County Health Roadmaps* show **what we can do** to create healthier places to live, learn, work and play. The Robert Wood Johnson Foundation collaborates with the University of Wisconsin

Population Health Institute to bring this groundbreaking program to counties and states across the nation.

The *County Health Rankings & Roadmaps* program includes the *County Health Rankings* project, launched in 2010, and the newer *Roadmaps* project that mobilizes local communities, national partners and leaders across all sectors to improve health. The program is based on this model of population health improvement:



In this model, health outcomes are measures that describe the current health status of a county. These health outcomes are influenced by a set of health factors. Counties can improve health outcomes by addressing all health factors with effective, evidence-informed policies and programs.

Everyone has a stake in community health. We all need to work together to find solutions. The *County Health Rankings & Roadmaps* serve as both a call to action and a needed tool in this effort.

## Guide to Our Web Site

To compile the *Rankings*, we selected measures that reflect important aspects of population health that can be improved and are available at the county level across the nation. Visit [www.countyhealthrankings.org](http://www.countyhealthrankings.org) to learn more.

To get started and see data, enter your county or state name in the search box. Click on the name of a county or measure to see more details. You can: Compare Counties; Download data for your state; Print one or more county

snapshots; or Share information with others via Facebook, Twitter, or Google+. To understand our methods, click on Learn about the Data and Methods. To learn about steps that you can take to improve health in your community, click on the *Roadmaps* tab. The *Roadmaps to Health Action Center* provides tools and resources to help groups working together to create healthier places. The Opportunities section provides information on funding, recognition, and partnership opportunities. The Connections section helps you learn what others are doing.

## County Health Roadmaps

The *Rankings* illustrate **what we know** when it comes to making people sick or healthy. The *County Health Rankings* confirm the critical role that factors such as education, jobs, income and the environment play in how healthy people are and how long we live.

This report introduces the *County Health Roadmaps*, a new partnership that mobilizes local communities, national partners and leaders across all sectors to improve health. The *County Health Roadmaps* show **what we can do** to create healthier places to live, learn, work and play. The Robert Wood Johnson Foundation collaborates with the University of Wisconsin Population Health Institute to bring this groundbreaking project to cities, counties and states across the nation.

The *Roadmaps* project includes grants to local coalitions and partnerships among policymakers, business, education, public health, health care, and community organizations; grants to national organizations working to improve health; recognition of communities whose promising efforts have led to better health; and customized technical assistance on strategies to improve health.

### Roadmaps to Health Community Grants

The *Roadmaps to Health Community Grants* provide funding for 2 years to state and local efforts among policymakers, business, education, healthcare, public health and community organizations working to create positive policy or systems changes that address the social and economic factors that influence the health of people in their community.

### Roadmaps to Health Partner Grants

The Robert Wood Johnson Foundation is awarding *Roadmaps to Health Partner Grants* to national organizations that are experienced at engaging local partners and leaders and are able to deliver high-quality training and technical assistance, and committed to making communities healthier places to live, learn, work and play. Partner grantees increase awareness about the *County Health Rankings & Roadmaps* to their members, affiliates and allies. The first Partner Grant was awarded to United Way Worldwide (UWW) in July 2011.

### Roadmaps to Health Prize

The Robert Wood Johnson Foundation and the University of Wisconsin Population Health Institute will award *Roadmaps to Health Prizes* of \$25,000 to up to six communities that are working to become healthier places to live, learn, work and play. The *Roadmaps to Health Prize* is intended not only to honor successful efforts, but also to inspire and stimulate similar activities in other U.S. communities.



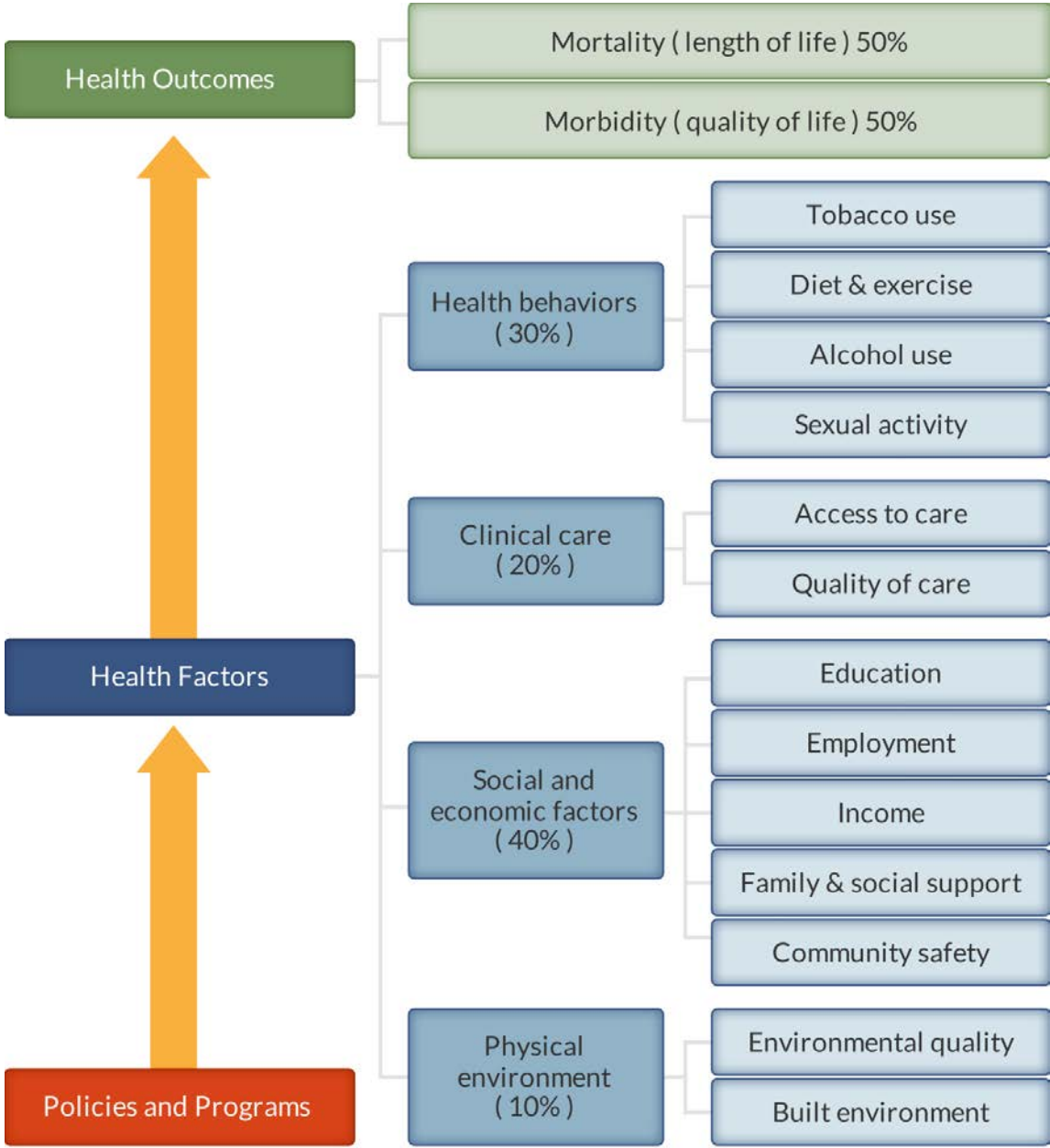
### Roadmaps to Health Action Center

The *Roadmaps to Health Action Center*, based at the University of Wisconsin Population Health Institute, provides tools and resources to help groups working to make their communities healthier places. The new Action Center will provide guidance on developing strategies and advocacy efforts to advance pro-health policies, offer opportunities for ongoing learning, and in the summer of 2012, host a searchable database of evidence-informed policies and programs focused on health improvement. Experts provide customized consultation to local communities who have demonstrated the willingness and capacity to address factors that we know influence how healthy a person is, such as education, income and family connectedness.

### County Health Rankings

The 2012 *County Health Rankings* report ranks Texas counties according to their summary measures of **health outcomes** and **health factors**. Counties also receive a rank for mortality, morbidity, health behaviors, clinical care, social and economic factors, and the physical environment. The figure below depicts the structure of the *Rankings* model; those having high ranks (e.g., 1 or 2) are estimated to be the “healthiest.”

Our summary **health outcomes** rankings are based on an equal weighting of mortality and morbidity measures. The summary **health factors** rankings are based on weighted scores of four types of factors: behavioral, clinical, social and economic, and environmental. The weights for the factors (shown in parentheses in the figure) are based upon a review of the literature and expert input, but represent just one way of combining these factors.

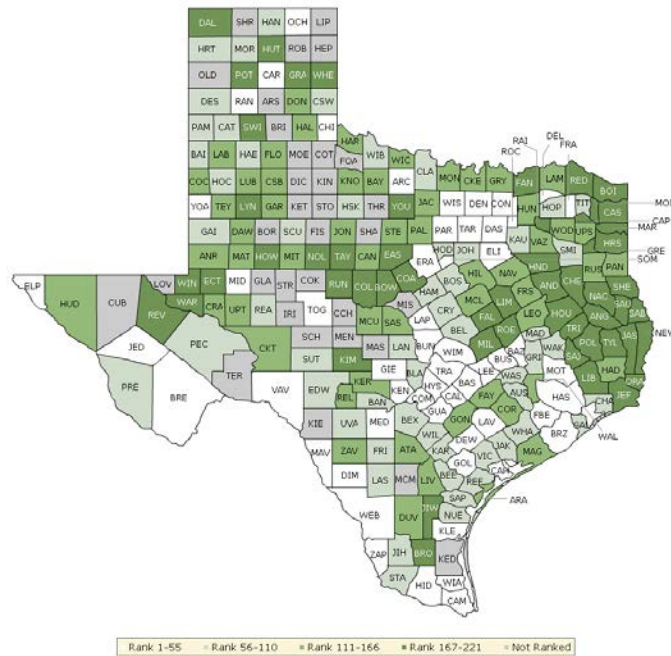


County Health Rankings model ©2012 UWPHI

The maps on this page and the next display Texas’s counties divided into groups by health rank. Maps help locate the healthiest and least healthy counties in the state. The lighter colors indicate better

performance in the respective summary rankings. The green map shows the distribution of summary health outcomes. The blue displays the distribution of the summary rank for health factors.

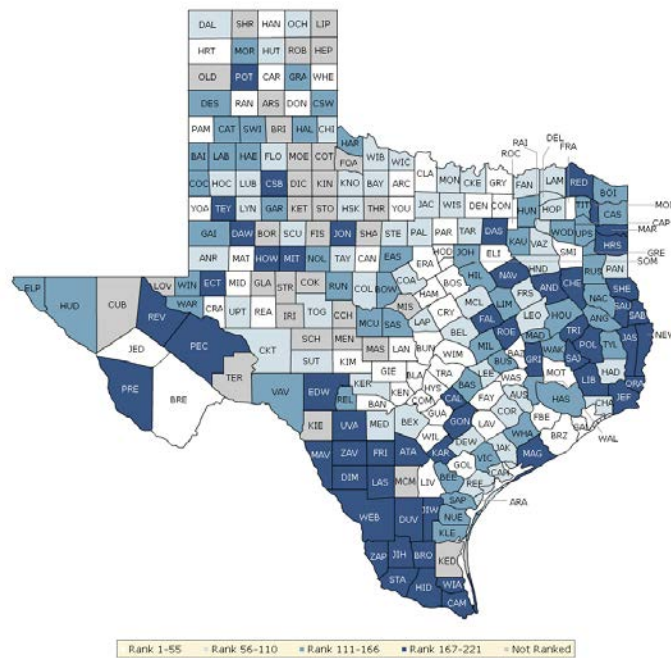
### HEALTH OUTCOMES



County	Rank	County	Rank	County	Rank	County	Rank
Anderson	207	Donley	139	Kaufman	99	Real	166
Andrews	128	Duval	120	Kendall	6	Red River	218
Angelina	177	Eastland	197	Kenedy	NR	Reeves	178
Aransas	151	Ector	191	Kent	NR	Refugio	56
Archer	37	Edwards	105	Kerr	161	Roberts	NR
Armstrong	NR	El Paso	45	Kimble	186	Robertson	180
Atascosa	134	Ellis	13	King	NR	Rockwall	3
Austin	104	Erath	11	Kinney	NR	Runnels	168
Bailey	110	Falls	182	Kleberg	34	Rusk	145
Bandera	95	Fannin	171	Knox	121	Sabine	202
Bastrop	47	Fayette	143	La Salle	80	San Augustine	214
Baylor	158	Fisher	NR	Lamar	165	San Jacinto	195
Bee	106	Floyd	163	Lamb	154	San Patricio	76
Bell	96	Foard	NR	Lampasas	20	San Saba	118
Bexar	73	Fort Bend	9	Lavaca	19	Schleicher	NR
Blanco	81	Franklin	17	Lee	27	Scurry	75
Borden	NR	Freestone	144	Leon	124	Shackelford	NR
Bosque	91	Frio	64	Liberty	209	Shelby	184
Bowie	169	Gaines	103	Limestone	196	Sherman	NR
Brazoria	30	Galveston	86	Lipscomb	NR	Smith	65
Brazos	10	Garza	153	Live Oak	111	Somervell	43
Brewster	15	Gillespie	5	Llano	97	Starr	84
Briscoe	NR	Glasscock	NR	Loving	NR	Stephens	148
Brooks	219	Goliad	35	Lubbock	140	Sterling	NR
Brown	179	Gonzales	162	Lynn	167	Stonewall	NR
Burleson	42	Gray	198	Madison	87	Sutton	79

County	Rank	County	Rank	County	Rank	County	Rank
Burnet	14	Grayson	125	Marion	221	Swisher	173
Caldwell	33	Gregg	183	Martin	113	Tarrant	24
Calhoun	49	Grimes	92	Mason	NR	Taylor	175
Callahan	160	Guadalupe	23	Matagorda	130	Terrell	NR
Cameron	38	Hale	66	Maverick	44	Terry	129
Camp	194	Hall	150	McCulloch	135	Throckmorton	NR
Carson	50	Hamilton	71	McLennan	133	Titus	62
Cass	189	Hansford	58	McMullen	NR	Tom Green	39
Castro	78	Hardeman	137	Medina	54	Travis	8
Chambers	74	Hardin	119	Menard	NR	Trinity	217
Cherokee	174	Harris	53	Midland	25	Tyler	201
Childress	28	Harrison	193	Milam	170	Upshur	147
Clay	69	Hartley	101	Mills	NR	Upton	131
Cochran	121	Haskell	70	Mitchell	114	Uvalde	67
Coke	NR	Hays	12	Montague	152	Val Verde	31
Coleman	187	Hemphill	NR	Montgomery	41	Van Zandt	146
Collin	1	Henderson	172	Moore	82	Victoria	88
Collingsworth	109	Hidalgo	21	Morris	215	Walker	89
Colorado	132	Hill	149	Motley	NR	Waller	112
Comal	7	Hockley	100	Nacogdoches	185	Ward	211
Comanche	188	Hood	60	Navarro	126	Washington	63
Concho	NR	Hopkins	68	Newton	213	Webb	26
Cooke	115	Houston	205	Nolan	208	Wharton	61
Coryell	98	Howard	200	Nueces	107	Wheeler	206
Cottle	NR	Hudspeth	159	Ochiltree	16	Wichita	136
Crane	142	Hunt	155	Oldham	NR	Wilbarger	102
Crockett	138	Hutchinson	176	Orange	216	Willacy	22
Crosby	141	Irion	NR	Palo Pinto	164	Williamson	2
Culberson	NR	Jack	123	Panola	156	Wilson	59
Dallam	210	Jackson	57	Parker	32	Winkler	212
Dallas	51	Jasper	203	Parmer	93	Wise	40
Dawson	116	Jeff Davis	48	Pecos	85	Wood	157
Deaf Smith	83	Jefferson	204	Polk	220	Yoakum	36
Delta	55	Jim Hogg	94	Potter	199	Young	190
Denton	4	Jim Wells	181	Presidio	90	Zapata	18
DeWitt	46	Johnson	72	Rains	192	Zavala	127
Dickens	NR	Jones	117	Randall	29		
Dimmit	52	Karnes	108	Reagan	77		

### HEALTH FACTORS



County	Rank	County	Rank	County	Rank	County	Rank
Anderson	193	Donley	40	Kaufman	144	Real	158
Andrews	83	Duval	210	Kendall	1	Red River	202
Angelina	149	Eastland	114	Kenedy	NR	Reeves	215
Aransas	75	Ector	200	Kent	NR	Refugio	86
Archer	15	Edwards	194	Kerr	59	Roberts	NR
Armstrong	NR	El Paso	111	Kimble	48	Robertson	192
Atascosa	178	Ellis	51	King	NR	Rockwall	4
Austin	71	Erath	23	Kinney	NR	Runnels	148
Bailey	132	Falls	180	Kleberg	119	Rusk	116
Bandera	47	Fannin	102	Knox	78	Sabine	207
Bastrop	115	Fayette	24	La Salle	196	San Augustine	212
Baylor	70	Fisher	NR	Lamar	108	San Jacinto	199
Bee	117	Floyd	77	Lamb	133	San Patricio	121
Bell	68	Foard	NR	Lampasas	66	San Saba	143
Bexar	84	Fort Bend	9	Lavaca	13	Schleicher	NR
Blanco	21	Franklin	34	Lee	74	Scurry	65
Borden	NR	Freestone	80	Leon	98	Shackelford	NR
Bosque	45	Frio	198	Liberty	205	Shelby	187
Bowie	162	Gaines	130	Limestone	134	Sherman	NR
Brazoria	27	Galveston	37	Lipscomb	NR	Smith	35
Brazos	20	Garza	157	Live Oak	49	Somervell	19
Brewster	22	Gillespie	3	Llano	18	Starr	221
Briscoe	NR	Glasscock	NR	Loving	NR	Stephens	82
<b>Brooks</b>	<b>216</b>	<b>Goliad</b>	<b>33</b>	<b>Lubbock</b>	<b>79</b>	<b>Sterling</b>	<b>NR</b>
Brown	131	Gonzales	191	Lynn	92	Stonewall	NR
Burleson	128	Gray	129	Madison	156	Sutton	69



County	Rank	County	Rank	County	Rank	County	Rank
Burnet	32	Grayson	54	Marion	201	Swisher	135
Caldwell	170	Gregg	150	Martin	53	Tarrant	64
Calhoun	61	Grimes	173	Mason	NR	Taylor	95
Callahan	31	Guadalupe	44	Matagorda	185	Terrell	NR
Cameron	203	Hale	125	Maverick	218	Terry	189
Camp	153	Hall	159	McCulloch	123	Throckmorton	NR
Carson	11	Hamilton	46	McLennan	107	Titus	151
Cass	155	Hansford	26	McMullen	NR	Tom Green	73
Castro	138	Hardeman	140	Medina	76	Travis	17
Chambers	57	Hardin	56	Menard	NR	Trinity	188
Cherokee	197	Harris	160	Midland	30	Tyler	136
Childress	81	Harrison	186	Milam	164	Upshur	127
Clay	41	Hartley	16	Mills	NR	Upton	60
Cochran	137	Haskell	90	Mitchell	177	Uvalde	195
Coke	NR	Hays	14	Montague	104	Val Verde	122
Coleman	96	Hemphill	NR	Montgomery	12	Van Zandt	106
Collin	2	Henderson	89	Moore	118	Victoria	146
Collingsworth	120	Hidalgo	214	Morris	183	Walker	145
Colorado	85	Hill	112	Motley	NR	Waller	142
Comal	6	Hockley	72	Nacogdoches	161	Ward	139
Comanche	63	Hood	28	Navarro	172	Washington	25
<b>Concho</b>	<b>NR</b>	<b>Hopkins</b>	<b>94</b>	<b>Newton</b>	<b>167</b>	<b>Webb</b>	<b>208</b>
Cooke	101	Houston	165	Nolan	166	Wharton	113
Coryell	42	Howard	176	Nueces	152	Wheeler	52
Cottle	NR	Hudspeth	147	Ochiltree	58	Wichita	62
Crane	39	Hunt	163	Oldham	NR	Wilbarger	93
Crockett	105	Hutchinson	91	Orange	190	Willacy	220
Crosby	179	Irion	NR	Palo Pinto	88	Williamson	5
Culberson	NR	Jack	103	Panola	99	Wilson	29
Dallam	67	Jackson	97	Parker	43	Winkler	124
Dallas	168	Jasper	171	Parmer	38	Wise	109
Dawson	182	Jeff Davis	10	Pecos	181	Wood	141
Deaf Smith	154	Jefferson	211	Polk	209	Yoakum	55
Delta	87	Jim Hogg	184	Potter	213	Young	50
Denton	8	Jim Wells	206	Presidio	174	Zapata	204
DeWitt	110	Johnson	126	Rains	100	Zavala	219
Dickens	NR	Jones	169	Randall	7		
Dimmit	217	Karnes	175	Reagan	36		

## Summary Health Outcomes & Health Factors Rankings

Counties receive two summary ranks:

- Health Outcomes
- Health Factors

Each of these ranks represents a weighted summary of a number of measures.

Health outcomes represent how healthy a county is while health factors represent what influences the health of the county.

Rank	Health Outcomes	Rank	Health Factors
1	Collin	1	Kendall
2	Williamson	2	Collin
3	Rockwall	3	Gillespie
4	Denton	4	Rockwall
5	Gillespie	5	Williamson
6	Kendall	6	Comal
7	Comal	7	Randall
8	Travis	8	Denton
9	Fort Bend	9	Fort Bend
10	Brazos	10	Jeff Davis
11	Erath	11	Carson
12	Hays	12	Montgomery
13	Ellis	13	Lavaca
14	Burnet	14	Hays
15	Brewster	15	Archer
16	Ochiltree	16	Hartley
17	Franklin	17	Travis
18	Zapata	18	Llano
19	Lavaca	19	Somervell
20	Lampasas	20	Brazos
21	Hidalgo	21	Blanco
22	Willacy	22	Brewster
23	Guadalupe	23	Erath
24	Tarrant	24	Fayette
25	Midland	25	Washington
26	Webb	26	Hansford
27	Lee	27	Brazoria
28	Childress	28	Hood
29	Randall	29	Wilson
30	Brazoria	30	Midland
31	Val Verde	31	Callahan
32	Parker	32	Burnet
33	Caldwell	33	Goliad
34	Kleberg	34	Franklin
35	Goliad	35	Smith
36	Yoakum	36	Reagan
37	Archer	37	Galveston
38	Cameron	38	Parmer
39	Tom Green	39	Crane
40	Wise	40	Donley
41	Montgomery	41	Clay
42	Burleson	42	Coryell

Rank	Health Outcomes	Rank	Health Factors
43	Somervell	43	Parker
44	Maverick	44	Guadalupe
45	El Paso	45	Bosque
46	DeWitt	46	Hamilton
47	Bastrop	47	Bandera
48	Jeff Davis	48	Kimble
49	Calhoun	49	Live Oak
50	Carson	50	Young
51	Dallas	51	Ellis
52	Dimmit	52	Wheeler
53	Harris	53	Martin
54	Medina	54	Grayson
55	Delta	55	Yoakum
56	Refugio	56	Hardin
57	Jackson	57	Chambers
58	Hansford	58	Ochiltree
59	Wilson	59	Kerr
60	Hood	60	Upton
61	Wharton	61	Calhoun
62	Titus	62	Wichita
63	Washington	63	Comanche
64	Frio	64	Tarrant
65	Smith	65	Scurry
66	Hale	66	Lampasas
67	Uvalde	67	Dallam
68	Hopkins	68	Bell
69	Clay	69	Sutton
70	Haskell	70	Baylor
71	Hamilton	71	Austin
72	Johnson	72	Hockley
73	Bexar	73	Tom Green
74	Chambers	74	Lee
75	Scurry	75	Aransas
76	San Patricio	76	Medina
77	Reagan	77	Floyd
78	Castro	78	Knox
79	Sutton	79	Lubbock
80	La Salle	80	Freestone
81	Blanco	81	Childress
82	Moore	82	Stephens
83	Deaf Smith	83	Andrews
84	Starr	84	Bexar
85	Pecos	85	Colorado
86	Galveston	86	Refugio
87	Madison	87	Delta
88	Victoria	88	Palo Pinto
89	Walker	89	Henderson
90	Presidio	90	Haskell

Rank	Health Outcomes	Rank	Health Factors
91	Bosque	91	Hutchinson
92	Grimes	92	Lynn
93	Parmer	93	Wilbarger
94	Jim Hogg	94	Hopkins
95	Bandera	95	Taylor
96	Bell	96	Coleman
97	Llano	97	Jackson
98	Coryell	98	Leon
99	Kaufman	99	Panola
100	Hockley	100	Rains
101	Hartley	101	Cooke
102	Wilbarger	102	Fannin
103	Gaines	103	Jack
104	Austin	104	Montague
105	Edwards	105	Crockett
106	Bee	106	Van Zandt
107	Nueces	107	McLennan
108	Karnes	108	Lamar
109	Collingsworth	109	Wise
110	Bailey	110	DeWitt
111	Live Oak	111	El Paso
112	Waller	112	Hill
113	Martin	113	Wharton
114	Mitchell	114	Eastland
115	Cooke	115	Bastrop
116	Dawson	116	Rusk
117	Jones	117	Bee
118	San Saba	118	Moore
119	Hardin	119	Kleberg
120	Duval	120	Collingsworth
121	Cochran	121	San Patricio
121	Knox	122	Val Verde
123	Jack	123	McCulloch
124	Leon	124	Winkler
125	Grayson	125	Hale
126	Navarro	126	Johnson
127	Zavala	127	Upshur
128	Andrews	128	Burleson
129	Terry	129	Gray
130	Matagorda	130	Gaines
131	Upton	131	Brown
132	Colorado	132	Bailey
133	McLennan	133	Lamb
134	Atascosa	134	Limestone
135	McCulloch	135	Swisher
136	Wichita	136	Tyler
137	Hardeman	137	Cochran
138	Crockett	138	Castro

Rank	Health Outcomes	Rank	Health Factors
139	Donley	139	Ward
140	Lubbock	140	Hardeman
141	Crosby	141	Wood
142	Crane	142	Waller
143	Fayette	143	San Saba
144	Freestone	144	Kaufman
145	Rusk	145	Walker
146	Van Zandt	146	Victoria
147	Upshur	147	Hudspeth
148	Stephens	148	Runnels
149	Hill	149	Angelina
150	Hall	150	Gregg
151	Aransas	151	Titus
152	Montague	152	Nueces
153	Garza	153	Camp
154	Lamb	154	Deaf Smith
155	Hunt	155	Cass
156	Panola	156	Madison
157	Wood	157	Garza
158	Baylor	158	Real
159	Hudspeth	159	Hall
160	Callahan	160	Harris
161	Kerr	161	Nacogdoches
162	Gonzales	162	Bowie
163	Floyd	163	Hunt
164	Palo Pinto	164	Milam
165	Lamar	165	Houston
166	Real	166	Nolan
167	Lynn	167	Newton
168	Runnels	168	Dallas
169	Bowie	169	Jones
170	Milam	170	Caldwell
171	Fannin	171	Jasper
172	Henderson	172	Navarro
173	Swisher	173	Grimes
174	Cherokee	174	Presidio
175	Taylor	175	Karnes
176	Hutchinson	176	Howard
177	Angelina	177	Mitchell
178	Reeves	178	Atascosa
179	Brown	179	Crosby
180	Robertson	180	Falls
181	Jim Wells	181	Pecos
182	Falls	182	Dawson
183	Gregg	183	Morris
184	Shelby	184	Jim Hogg
185	Nacogdoches	185	Matagorda
186	Kimble	186	Harrison

Rank	Health Outcomes	Rank	Health Factors
187	Coleman	187	Shelby
188	Comanche	188	Trinity
189	Cass	189	Terry
190	Young	190	Orange
191	Ector	191	Gonzales
192	Rains	192	Robertson
193	Harrison	193	Anderson
194	Camp	194	Edwards
195	San Jacinto	195	Uvalde
196	Limestone	196	La Salle
197	Eastland	197	Cherokee
198	Gray	198	Frio
199	Potter	199	San Jacinto
200	Howard	200	Ector
201	Tyler	201	Marion
202	Sabine	202	Red River
203	Jasper	203	Cameron
204	Jefferson	204	Zapata
205	Houston	205	Liberty
206	Wheeler	206	Jim Wells
207	Anderson	207	Sabine
208	Nolan	208	Webb
209	Liberty	209	Polk
210	Dallam	210	Duval
211	Ward	211	Jefferson
212	Winkler	212	San Augustine
213	Newton	213	Potter
214	San Augustine	214	Hidalgo
215	Morris	215	Reeves
216	Orange	216	Brooks
217	Trinity	217	Dimmit
218	Red River	218	Maverick
219	Brooks	219	Zavala
220	Polk	220	Willacy
221	Marion	221	Starr

**Not Ranked:** Armstrong, Borden, Briscoe, Coke, Concho, Cottle, Culberson, Dickens, Fisher, Foard, Glasscock, Hemphill, Irion, Kenedy, Kent, King, Kinney, Lipscomb, Loving, McMullen, Mason, Menard, Mills, Motley, Oldham, Roberts, Schleicher, Shackelford, Sherman, Sterling, Stonewall, Terrell, Throckmorton

## 2012 County Health Rankings: Measures, Data Sources, and Years of Data

	Measure	Data Source	Years of Data
<b>HEALTH OUTCOMES</b>			
<b>Mortality</b>	Premature death	National Center for Health Statistics	2006-2008
<b>Morbidity</b>	Poor or fair health	Behavioral Risk Factor Surveillance System	2004-2010
	Poor physical health days	Behavioral Risk Factor Surveillance System	2004-2010
	Poor mental health days	Behavioral Risk Factor Surveillance System	2004-2010
	Low birthweight	National Center for Health Statistics	2002-2008
<b>HEALTH FACTORS</b>			
<b>HEALTH BEHAVIORS</b>			
<b>Tobacco Use</b>	Adult smoking	Behavioral Risk Factor Surveillance System	2004-2010
<b>Diet and Exercise</b>	Adult obesity	National Center for Chronic Disease Prevention and Health Promotion	2009
	Physical inactivity	National Center for Chronic Disease Prevention and Health Promotion	2009
<b>Alcohol Use</b>	Excessive drinking	Behavioral Risk Factor Surveillance System	2004-2010
	Motor vehicle crash death rate	National Center for Health Statistics	2002-2008
<b>Sexual Activity</b>	Sexually transmitted infections	National Center for Hepatitis, HIV, STD and TB Prevention	2009
	Teen birth rate	National Center for Health Statistics	2002-2008
<b>CLINICAL CARE</b>			
<b>Access to Care</b>	Uninsured	Small Area Health Insurance Estimates	2009
	Primary care physicians	Health Resources & Services Administration	2009
<b>Quality of Care</b>	Preventable hospital stays	Medicare/Dartmouth Institute	2009
	Diabetic screening	Medicare/Dartmouth Institute	2009
	Mammography screening	Medicare/Dartmouth Institute	2009
<b>SOCIAL AND ECONOMIC FACTORS</b>			
<b>Education</b>	High school graduation	National Center for Education Statistics and state-specific sources <sup>1</sup>	2008-2010
	Some college	American Community Survey	2006-2010
<b>Employment</b>	Unemployment	Bureau of Labor Statistics	2010
<b>Income</b>	Children in poverty	Small Area Income and Poverty Estimates	2010
<b>Family and Social Support</b>	Inadequate social support	Behavioral Risk Factor Surveillance System	2006-2010
	Children in single-parent households	American Community Survey	2006-2010
<b>Community Safety</b>	Violent crime rate <sup>2</sup>	Federal Bureau of Investigation	2007-2009
<b>PHYSICAL ENVIRONMENT</b>			
<b>Environmental Quality</b> <sup>3</sup>	Air pollution-particulate matter days	U.S. Environmental Protection Agency	2007
	Air pollution-ozone days	U.S. Environmental Protection Agency	2007
<b>Built Environment</b>	Access to recreational facilities	Census County Business Patterns	2009
	Limited access to healthy foods <sup>4</sup>	U.S. Department of Agriculture	2006
	Fast food restaurants	Census County Business Patterns	2009

<sup>1</sup> NCES used for AK, AL, AR, CA, CT, FL, HI, ID, KY, MT, ND, NJ, OK, SD and TN

<sup>2</sup> State data source for IL.

<sup>3</sup> Not available for AK and HI.

<sup>4</sup> Access to Healthy Foods (2009) from Census Zip Code Business Patterns for AK and HI.

CREDITS

**Report Authors**

University of Wisconsin-Madison  
School of Medicine and Public Health  
Department of Population Health Sciences  
Population Health Institute

Bridget Booske Catlin, PhD, MHSA  
Amanda Jovaag, MS  
Patrick Remington, MD, MPH

This publication would not have been possible without the following contributions:

**Technical Advisor**

Amy Bernstein, ScD, Centers for Disease Control and Prevention

**Research Assistance**

Jennifer Buechner  
Hyojun Park, MA  
Jennifer Robinson  
Matthew Rodock, MPH  
Anne Roubal

**Communications and Outreach**

Burness Communications  
Anna Grilley  
Anna Graupner, MPH  
Kate Konkle, MPH  
Angela Russell, MS  
Julie Willems Van Dijk, PhD, RN

**Design**

Forum One, Alexandria, VA  
Media Solutions, UW School of Medicine and Public Health

**Robert Wood Johnson Foundation**

Brenda L. Henry, PhD, MPH – Senior Program Officer  
Abbey Cofsky, MPH – Program Officer  
Michelle Larkin, JD, MS, RN – Assistant Vice-President and Deputy Director, Health Group  
James S. Marks, MD, MPH – Senior Vice-President and Group Director, Health Group  
Joe Marx – Senior Communications Officer

Suggested citation: University of Wisconsin Population Health Institute. *County Health Rankings 2012*.





[countyhealthrankings.org](http://countyhealthrankings.org)



**University of Wisconsin Population Health Institute**  
610 Walnut St, #524, Madison, WI 53726  
(608) 265-6370 / [info@countyhealthrankings.org](mailto:info@countyhealthrankings.org)

