

County Health Rankings & Roadmaps

A Healthier Nation, County by County

2012 *Rankings* **Mississippi**



Robert Wood Johnson Foundation



UNIVERSITY OF WISCONSIN

Population Health Institute

Translating Research into Policy and Practice

Introduction

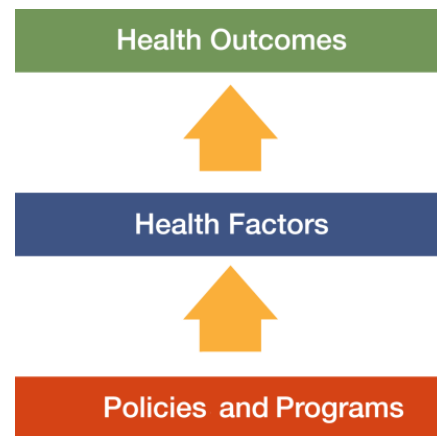
Where we live matters to our health. The health of a community depends on many different factors, including the environment, education and jobs, access to and quality of healthcare, and individual behaviors. We can improve a community's health by implementing effective policies and programs. For example, people who live in communities with smoke-free laws are less likely to smoke or to be exposed to second-hand smoke, which reduces lung cancer risk. In addition, people who live in communities with safe and accessible park and recreation space are more likely to exercise, which reduces heart disease risk.

However, health varies greatly across communities, with some places being much healthier than others. And, until now, there has been no standard method to illustrate what we know about what makes people sick or healthy or a central resource to identify what we can do to create healthier places to live, learn, work and play.

We know that much of what influences our health happens outside of the doctor's office – in our schools, workplaces and neighborhoods. The *County Health Rankings & Roadmaps* program provides information on the overall health of your community and provides the tools necessary to create community-based, evidence-informed solutions. Ranking the health of nearly every county across the nation, the *County Health Rankings* illustrate **what we know** when it comes to what is making communities sick or healthy. The *County Health Roadmaps* show **what we can do** to create healthier places to live, learn, work and play. The Robert Wood Johnson Foundation collaborates with the University of Wisconsin

Population Health Institute to bring this groundbreaking program to counties and states across the nation.

The *County Health Rankings & Roadmaps* program includes the *County Health Rankings* project, launched in 2010, and the newer *Roadmaps* project that mobilizes local communities, national partners and leaders across all sectors to improve health. The program is based on this model of population health improvement:



In this model, health outcomes are measures that describe the current health status of a county. These health outcomes are influenced by a set of health factors. Counties can improve health outcomes by addressing all health factors with effective, evidence-informed policies and programs.

Everyone has a stake in community health. We all need to work together to find solutions. The *County Health Rankings & Roadmaps* serve as both a call to action and a needed tool in this effort.

Guide to Our Web Site

To compile the *Rankings*, we selected measures that reflect important aspects of population health that can be improved and are available at the county level across the nation. Visit www.countyhealthrankings.org to learn more.

To get started and see data, enter your county or state name in the search box. Click on the name of a county or measure to see more details. You can: Compare Counties; Download data for your state; Print one or more county

snapshots; or Share information with others via Facebook, Twitter, or Google+. To understand our methods, click on Learn about the Data and Methods. To learn about steps that you can take to improve health in your community, click on the *Roadmaps* tab. The *Roadmaps to Health Action Center* provides tools and resources to help groups working together to create healthier places. The Opportunities section provides information on funding, recognition, and partnership opportunities. The Connections section helps you learn what others are doing.

County Health Roadmaps

The *Rankings* illustrate **what we know** when it comes to making people sick or healthy. The *County Health Rankings* confirm the critical role that factors such as education, jobs, income and the environment play in how healthy people are and how long we live.

This report introduces the *County Health Roadmaps*, a new partnership that mobilizes local communities, national partners and leaders across all sectors to improve health. The *County Health Roadmaps* show **what we can do** to create healthier places to live, learn, work and play. The Robert Wood Johnson Foundation collaborates with the University of Wisconsin Population Health Institute to bring this groundbreaking project to cities, counties and states across the nation.

The *Roadmaps* project includes grants to local coalitions and partnerships among policymakers, business, education, public health, health care, and community organizations; grants to national organizations working to improve health; recognition of communities whose promising efforts have led to better health; and customized technical assistance on strategies to improve health.

Roadmaps to Health Community Grants

The *Roadmaps to Health Community Grants* provide funding for 2 years to state and local efforts among policymakers, business, education, healthcare, public health and community organizations working to create positive policy or systems changes that address the social and economic factors that influence the health of people in their community.

Roadmaps to Health Partner Grants

The Robert Wood Johnson Foundation is awarding *Roadmaps to Health Partner Grants* to national organizations that are experienced at engaging local partners and leaders and are able to deliver high-quality training and technical assistance, and committed to making communities healthier places to live, learn, work and play. Partner grantees increase awareness about the *County Health Rankings & Roadmaps* to their members, affiliates and allies. The first Partner Grant was awarded to United Way Worldwide (UWW) in July 2011.

Roadmaps to Health Prize

The Robert Wood Johnson Foundation and the University of Wisconsin Population Health Institute will award *Roadmaps to Health Prizes* of \$25,000 to up to six communities that are working to become healthier places to live, learn, work and play. The *Roadmaps to Health Prize* is intended not only to honor successful efforts, but also to inspire and stimulate similar activities in other U.S. communities.



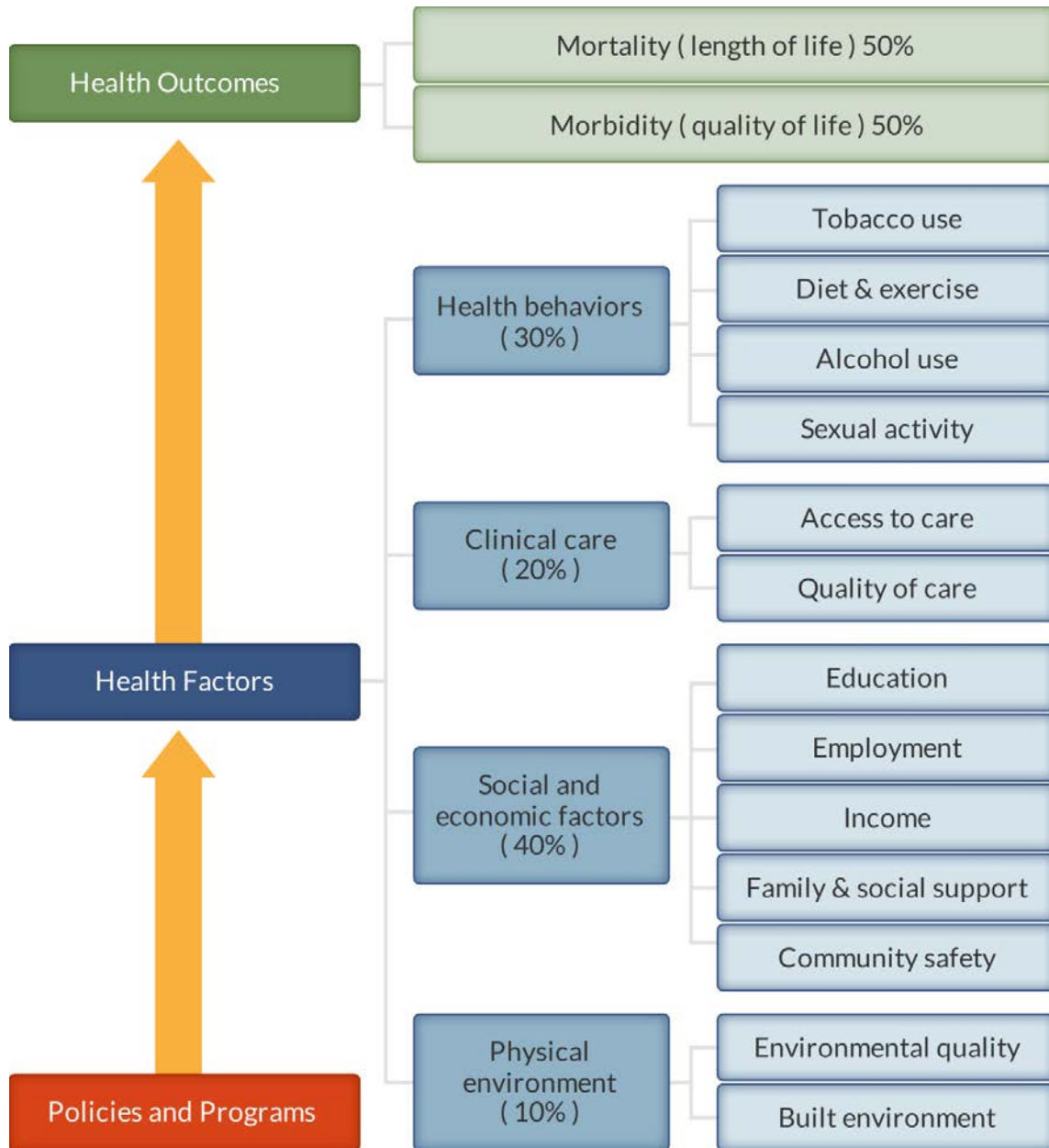
Roadmaps to Health Action Center

The *Roadmaps to Health Action Center*, based at the University of Wisconsin Population Health Institute, provides tools and resources to help groups working to make their communities healthier places. The new Action Center will provide guidance on developing strategies and advocacy efforts to advance pro-health policies, offer opportunities for ongoing learning, and in the summer of 2012, host a searchable database of evidence-informed policies and programs focused on health improvement. Experts provide customized consultation to local communities who have demonstrated the willingness and capacity to address factors that we know influence how healthy a person is, such as education, income and family connectedness.

County Health Rankings

The 2012 *County Health Rankings* report ranks Mississippi counties according to their summary measures of **health outcomes** and **health factors**. Counties also receive a rank for mortality, morbidity, health behaviors, clinical care, social and economic factors, and the physical environment. The figure below depicts the structure of the *Rankings* model; those having high ranks (e.g., 1 or 2) are estimated to be the “healthiest.”

Our summary **health outcomes** rankings are based on an equal weighting of mortality and morbidity measures. The summary **health factors** rankings are based on weighted scores of four types of factors: behavioral, clinical, social and economic, and environmental. The weights for the factors (shown in parentheses in the figure) are based upon a review of the literature and expert input, but represent just one way of combining these factors.

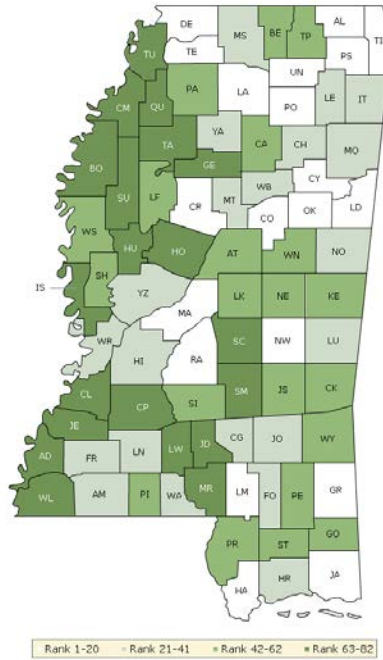


County Health Rankings model ©2012 UWPHI

The maps on this page and the next display Mississippi's counties divided into groups by health rank. Maps help locate the healthiest and least healthy counties in the state. The lighter colors indicate better performance in the respective

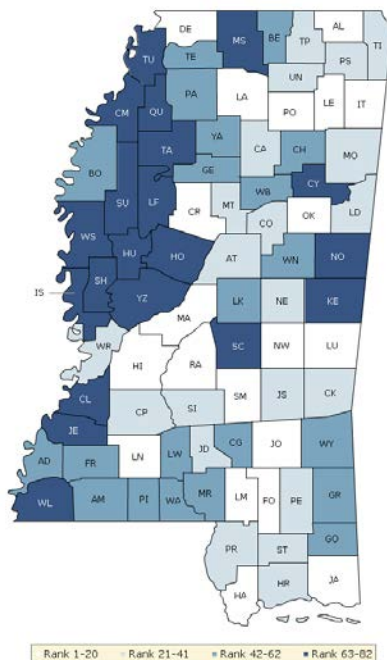
summary rankings. The green map shows the distribution of summary health outcomes. The blue displays the distribution of the summary rank for health factors.

HEALTH OUTCOMES



County	Rank	County	Rank	County	Rank	County	Rank
Adams	73	Grenada	69	Lincoln	35	Simpson	53
Alcorn	18	Hancock	6	Lowndes	9	Smith	66
Amite	40	Harrison	21	Madison	7	Stone	46
Attala	62	Hinds	34	Marion	79	Sunflower	77
Benton	55	Holmes	75	Marshall	41	Tallahatchie	81
Bolivar	72	Humphreys	68	Monroe	24	Tate	19
Calhoun	52	Issaquena	65	Montgomery	38	Tippah	57
Carroll	13	Itawamba	31	Neshoba	50	Tishomingo	16
Chickasaw	23	Jackson	12	Newton	14	Tunica	80
Choctaw	17	Jasper	54	Noxubee	36	Union	11
Claiborne	71	Jefferson	70	Oktibbeha	5	Walthall	37
Clarke	44	Jefferson Davis	74	Panola	59	Warren	25
Clay	15	Jones	32	Pearl River	42	Washington	61
Coahoma	76	Kemper	58	Perry	45	Wayne	49
Copiah	67	Lafayette	2	Pike	60	Webster	29
Covington	30	Lamar	3	Pontotoc	8	Wilkinson	78
DeSoto	1	Lauderdale	26	Prentiss	20	Winston	51
Forrest	28	Lawrence	64	Quitman	82	Yalobusha	39
Franklin	33	Leake	56	Rankin	4	Yazoo	27
George	43	Lee	22	Scott	63		
Greene	10	Leflore	48	Sharkey	47		

HEALTH FACTORS



County	Rank	County	Rank	County	Rank	County	Rank
Adams	44	Grenada	42	Lincoln	8	Simpson	38
Alcorn	18	Hancock	10	Lowndes	25	Smith	11
Amite	58	Harrison	24	Madison	1	Stone	26
Attala	30	Hinds	16	Marion	62	Sunflower	81
Benton	53	Holmes	80	Marshall	71	Tallahatchie	77
Bolivar	60	Humphreys	75	Monroe	28	Tate	45
Calhoun	37	Issaquena	74	Montgomery	29	Tippah	41
Carroll	19	Itawamba	20	Neshoba	36	Tishomingo	27
Chickasaw	47	Jackson	9	Newton	14	Tunica	78
Choctaw	22	Jasper	34	Noxubee	69	Union	21
Claiborne	72	Jefferson	82	Oktibbeha	5	Walthall	51
Clarke	32	Jefferson Davis	40	Panola	57	Warren	31
Clay	66	Jones	17	Pearl River	33	Washington	70
Coahoma	79	Kemper	68	Perry	39	Wayne	43
Copiah	35	Lafayette	3	Pike	56	Webster	49
Covington	48	Lamar	2	Pontotoc	12	Wilkinson	64
DeSoto	6	Lauderdale	13	Prentiss	23	Winston	54
Forrest	15	Lawrence	50	Quitman	76	Yalobusha	61
Franklin	55	Leake	52	Rankin	4	Yazoo	67
George	46	Lee	7	Scott	63		
Greene	59	Leflore	65	Sharkey	73		

Summary Health Outcomes & Health Factors Rankings

Counties receive two summary ranks:

- Health Outcomes
- Health Factors

Health outcomes represent how healthy a county is while health factors represent what influences the health of the county.

Each of these ranks represents a weighted summary of a number of measures.

Rank	Health Outcomes	Rank	Health Factors
1	DeSoto	1	Madison
2	Lafayette	2	Lamar
3	Lamar	3	Lafayette
4	Rankin	4	Rankin
5	Oktibbeha	5	Oktibbeha
6	Hancock	6	DeSoto
7	Madison	7	Lee
8	Pontotoc	8	Lincoln
9	Lowndes	9	Jackson
10	Greene	10	Hancock
11	Union	11	Smith
12	Jackson	12	Pontotoc
13	Carroll	13	Lauderdale
14	Newton	14	Newton
15	Clay	15	Forrest
16	Tishomingo	16	Hinds
17	Choctaw	17	Jones
18	Alcorn	18	Alcorn
19	Tate	19	Carroll
20	Prentiss	20	Itawamba
21	Harrison	21	Union
22	Lee	22	Choctaw
23	Chickasaw	23	Prentiss
24	Monroe	24	Harrison
25	Warren	25	Lowndes
26	Lauderdale	26	Stone
27	Yazoo	27	Tishomingo
28	Forrest	28	Monroe
29	Webster	29	Montgomery
30	Covington	30	Attala
31	Itawamba	31	Warren
32	Jones	32	Clarke
33	Franklin	33	Pearl River
34	Hinds	34	Jasper
35	Lincoln	35	Copiah
36	Noxubee	36	Neshoba
37	Walthall	37	Calhoun
38	Montgomery	38	Simpson
39	Yalobusha	39	Perry
40	Amite	40	Jefferson Davis
41	Marshall	41	Tippah
42	Pearl River	42	Grenada

Rank	Health Outcomes	Rank	Health Factors
43	George	43	Wayne
44	Clarke	44	Adams
45	Perry	45	Tate
46	Stone	46	George
47	Sharkey	47	Chickasaw
48	Leflore	48	Covington
49	Wayne	49	Webster
50	Neshoba	50	Lawrence
51	Winston	51	Walthall
52	Calhoun	52	Leake
53	Simpson	53	Benton
54	Jasper	54	Winston
55	Benton	55	Franklin
56	Leake	56	Pike
57	Tippah	57	Panola
58	Kemper	58	Amite
59	Panola	59	Greene
60	Pike	60	Bolivar
61	Washington	61	Yalobusha
62	Attala	62	Marion
63	Scott	63	Scott
64	Lawrence	64	Wilkinson
65	Issaquena	65	Leflore
66	Smith	66	Clay
67	Copiah	67	Yazoo
68	Humphreys	68	Kemper
69	Grenada	69	Noxubee
70	Jefferson	70	Washington
71	Claiborne	71	Marshall
72	Bolivar	72	Claiborne
73	Adams	73	Sharkey
74	Jefferson Davis	74	Issaquena
75	Holmes	75	Humphreys
76	Coahoma	76	Quitman
77	Sunflower	77	Tallahatchie
78	Wilkinson	78	Tunica
79	Marion	79	Coahoma
80	Tunica	80	Holmes
81	Tallahatchie	81	Sunflower
82	Quitman	82	Jefferson

2012 County Health Rankings: Measures, Data Sources, and Years of Data

	Measure	Data Source	Years of Data
HEALTH OUTCOMES			
Mortality	Premature death	National Center for Health Statistics	2006-2008
Morbidity	Poor or fair health	Behavioral Risk Factor Surveillance System	2004-2010
	Poor physical health days	Behavioral Risk Factor Surveillance System	2004-2010
	Poor mental health days	Behavioral Risk Factor Surveillance System	2004-2010
	Low birthweight	National Center for Health Statistics	2002-2008
HEALTH FACTORS			
HEALTH BEHAVIORS			
Tobacco Use	Adult smoking	Behavioral Risk Factor Surveillance System	2004-2010
Diet and Exercise	Adult obesity	National Center for Chronic Disease Prevention and Health Promotion	2009
	Physical inactivity	National Center for Chronic Disease Prevention and Health Promotion	2009
Alcohol Use	Excessive drinking	Behavioral Risk Factor Surveillance System	2004-2010
	Motor vehicle crash death rate	National Center for Health Statistics	2002-2008
Sexual Activity	Sexually transmitted infections	National Center for Hepatitis, HIV, STD and TB Prevention	2009
	Teen birth rate	National Center for Health Statistics	2002-2008
CLINICAL CARE			
Access to Care	Uninsured	Small Area Health Insurance Estimates	2009
	Primary care physicians	Health Resources & Services Administration	2009
Quality of Care	Preventable hospital stays	Medicare/Dartmouth Institute	2009
	Diabetic screening	Medicare/Dartmouth Institute	2009
	Mammography screening	Medicare/Dartmouth Institute	2009
SOCIAL AND ECONOMIC FACTORS			
Education	High school graduation	National Center for Education Statistics and state-specific sources ¹	2008-2010
	Some college	American Community Survey	2006-2010
Employment	Unemployment	Bureau of Labor Statistics	2010
Income	Children in poverty	Small Area Income and Poverty Estimates	2010
Family and Social Support	Inadequate social support	Behavioral Risk Factor Surveillance System	2006-2010
	Children in single-parent households	American Community Survey	2006-2010
Community Safety	Violent crime rate ²	Federal Bureau of Investigation	2007-2009
PHYSICAL ENVIRONMENT			
Environmental Quality ³	Air pollution-particulate matter days	U.S. Environmental Protection Agency	2007
	Air pollution-ozone days	U.S. Environmental Protection Agency	2007
Built Environment	Access to recreational facilities	Census County Business Patterns	2009
	Limited access to healthy foods ⁴	U.S. Department of Agriculture	2006
	Fast food restaurants	Census County Business Patterns	2009

¹ NCES used for AK, AL, AR, CA, CT, FL, HI, ID, KY, MT, ND, NJ, OK, SD and TN

² State data source for IL.

³ Not available for AK and HI.

⁴ Access to Healthy Foods (2009) from Census Zip Code Business Patterns for AK and HI.

CREDITS

Report Authors

University of Wisconsin-Madison
School of Medicine and Public Health
Department of Population Health Sciences
Population Health Institute

Bridget Booske Catlin, PhD, MHSA
Amanda Jovaag, MS
Patrick Remington, MD, MPH

This publication would not have been possible without the following contributions:

Technical Advisor

Amy Bernstein, ScD, Centers for Disease Control and Prevention

Research Assistance

Jennifer Buechner
Hyojun Park, MA
Jennifer Robinson
Matthew Rodock, MPH
Anne Roubal

Communications and Outreach

Burness Communications
Anna Grilley
Anna Graupner, MPH
Kate Konkle, MPH
Angela Russell, MS
Julie Willems Van Dijk, PhD, RN

Design

Forum One, Alexandria, VA
Media Solutions, UW School of Medicine and Public Health

Robert Wood Johnson Foundation

Brenda L. Henry, PhD, MPH – Senior Program Officer
Abbey Cofsky, MPH – Program Officer
Michelle Larkin, JD, MS, RN – Assistant Vice-President and Deputy Director, Health Group
James S. Marks, MD, MPH – Senior Vice-President and Group Director, Health Group
Joe Marx – Senior Communications Officer

Suggested citation: University of Wisconsin Population Health Institute. *County Health Rankings 2012*.



**County Health
Rankings & Roadmaps**
A Healthier Nation, County by County

countyhealthrankings.org



University of Wisconsin Population Health Institute
610 Walnut St, #524, Madison, WI 53726
(608) 265-6370 / info@countyhealthrankings.org

