

# County Health Rankings & Roadmaps

A Healthier Nation, County by County

## 2012 *Rankings* **Georgia**



Robert Wood Johnson Foundation



UNIVERSITY OF WISCONSIN

**Population Health Institute**

*Translating Research into Policy and Practice*



## Introduction

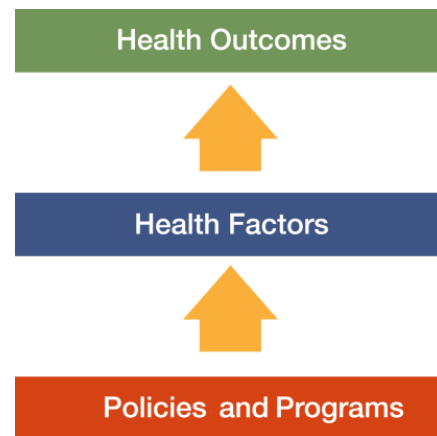
Where we live matters to our health. The health of a community depends on many different factors, including the environment, education and jobs, access to and quality of healthcare, and individual behaviors. We can improve a community's health by implementing effective policies and programs. For example, people who live in communities with smoke-free laws are less likely to smoke or to be exposed to second-hand smoke, which reduces lung cancer risk. In addition, people who live in communities with safe and accessible park and recreation space are more likely to exercise, which reduces heart disease risk.

However, health varies greatly across communities, with some places being much healthier than others. And, until now, there has been no standard method to illustrate what we know about what makes people sick or healthy or a central resource to identify what we can do to create healthier places to live, learn, work and play.

We know that much of what influences our health happens outside of the doctor's office – in our schools, workplaces and neighborhoods. The *County Health Rankings & Roadmaps* program provides information on the overall health of your community and provides the tools necessary to create community-based, evidence-informed solutions. Ranking the health of nearly every county across the nation, the *County Health Rankings* illustrate **what we know** when it comes to what is making communities sick or healthy. The *County Health Roadmaps* show **what we can do** to create healthier places to live, learn, work and play. The Robert Wood Johnson Foundation collaborates with the University of Wisconsin

Population Health Institute to bring this groundbreaking program to counties and states across the nation.

The *County Health Rankings & Roadmaps* program includes the *County Health Rankings* project, launched in 2010, and the newer *Roadmaps* project that mobilizes local communities, national partners and leaders across all sectors to improve health. The program is based on this model of population health improvement:



In this model, health outcomes are measures that describe the current health status of a county. These health outcomes are influenced by a set of health factors. Counties can improve health outcomes by addressing all health factors with effective, evidence-informed policies and programs.

Everyone has a stake in community health. We all need to work together to find solutions. The *County Health Rankings & Roadmaps* serve as both a call to action and a needed tool in this effort.

---

## Guide to Our Web Site

To compile the *Rankings*, we selected measures that reflect important aspects of population health that can be improved and are available at the county level across the nation. Visit [www.countyhealthrankings.org](http://www.countyhealthrankings.org) to learn more.

To get started and see data, enter your county or state name in the search box. Click on the name of a county or measure to see more details. You can: Compare Counties; Download data for your state; Print one or more county

snapshots; or Share information with others via Facebook, Twitter, or Google+. To understand our methods, click on Learn about the Data and Methods. To learn about steps that you can take to improve health in your community, click on the *Roadmaps* tab. The *Roadmaps to Health Action Center* provides tools and resources to help groups working together to create healthier places. The Opportunities section provides information on funding, recognition, and partnership opportunities. The Connections section helps you learn what others are doing.

## County Health Roadmaps

The *Rankings* illustrate **what we know** when it comes to making people sick or healthy. The *County Health Rankings* confirm the critical role that factors such as education, jobs, income and the environment play in how healthy people are and how long we live.

This report introduces the *County Health Roadmaps*, a new partnership that mobilizes local communities, national partners and leaders across all sectors to improve health. The *County Health Roadmaps* show **what we can do** to create healthier places to live, learn, work and play. The Robert Wood Johnson Foundation collaborates with the University of Wisconsin Population Health Institute to bring this groundbreaking project to cities, counties and states across the nation.

The *Roadmaps* project includes grants to local coalitions and partnerships among policymakers, business, education, public health, health care, and community organizations; grants to national organizations working to improve health; recognition of communities whose promising efforts have led to better health; and customized technical assistance on strategies to improve health.

### Roadmaps to Health Community Grants

The *Roadmaps to Health Community Grants* provide funding for 2 years to state and local efforts among policymakers, business, education, healthcare, public health and community organizations working to create positive policy or systems changes that address the social and economic factors that influence the health of people in their community.

### Roadmaps to Health Partner Grants

The Robert Wood Johnson Foundation is awarding *Roadmaps to Health Partner Grants* to national organizations that are experienced at engaging local partners and leaders and are able to deliver high-quality training and technical assistance, and committed to making communities healthier places to live, learn, work and play. Partner grantees increase awareness about the *County Health Rankings & Roadmaps* to their members, affiliates and allies. The first Partner Grant was awarded to United Way Worldwide (UWW) in July 2011.

### Roadmaps to Health Prize

The Robert Wood Johnson Foundation and the University of Wisconsin Population Health Institute will award *Roadmaps to Health Prizes* of \$25,000 to up to six communities that are working to become healthier places to live, learn, work and play. The *Roadmaps to Health Prize* is intended not only to honor successful efforts, but also to inspire and stimulate similar activities in other U.S. communities.



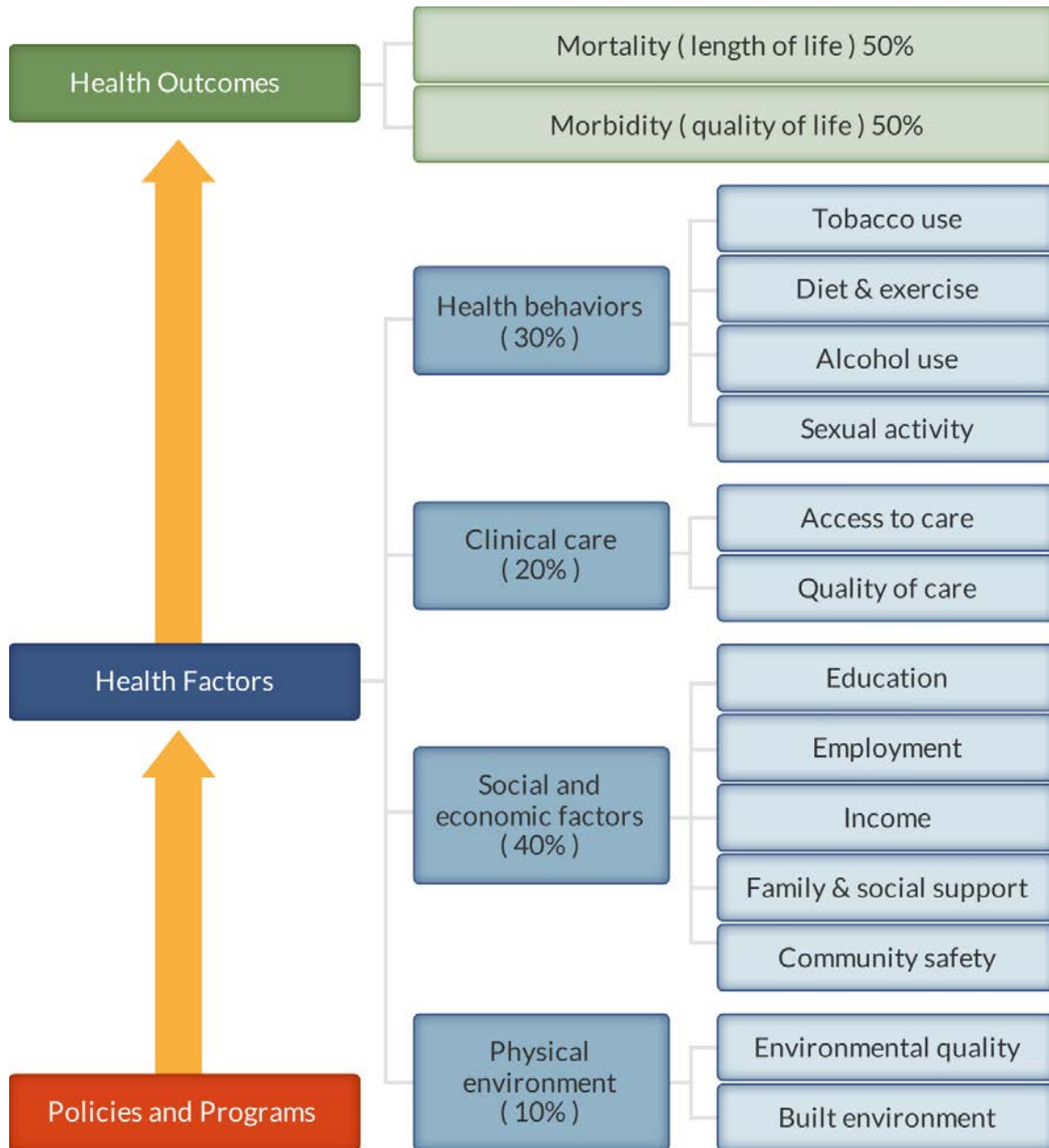
### Roadmaps to Health Action Center

The *Roadmaps to Health Action Center*, based at the University of Wisconsin Population Health Institute, provides tools and resources to help groups working to make their communities healthier places. The new Action Center will provide guidance on developing strategies and advocacy efforts to advance pro-health policies, offer opportunities for ongoing learning, and in the summer of 2012, host a searchable database of evidence-informed policies and programs focused on health improvement. Experts provide customized consultation to local communities who have demonstrated the willingness and capacity to address factors that we know influence how healthy a person is, such as education, income and family connectedness.

## County Health Rankings

The 2012 *County Health Rankings* report ranks Georgia counties according to their summary measures of **health outcomes** and **health factors**. Counties also receive a rank for mortality, morbidity, health behaviors, clinical care, social and economic factors, and the physical environment. The figure below depicts the structure of the *Rankings* model; those having high ranks (e.g., 1 or 2) are estimated to be the “healthiest.”

Our summary **health outcomes** rankings are based on an equal weighting of mortality and morbidity measures. The summary **health factors** rankings are based on weighted scores of four types of factors: behavioral, clinical, social and economic, and environmental. The weights for the factors (shown in parentheses in the figure) are based upon a review of the literature and expert input, but represent just one way of combining these factors.

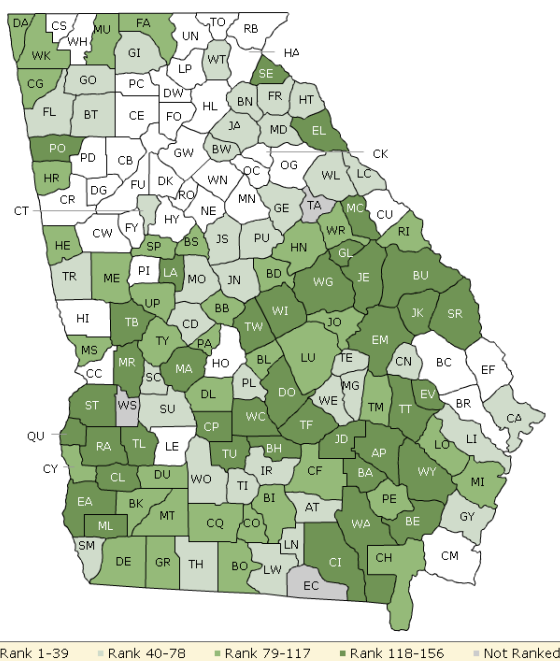


County Health Rankings model ©2012 UWPHI

The maps on this page and the next display Georgia’s counties divided into groups by health rank. Maps help locate the healthiest and least healthy counties in the state. The lighter colors indicate better

performance in the respective summary rankings. The green map shows the distribution of summary health outcomes. The blue displays the distribution of the summary rank for health factors.

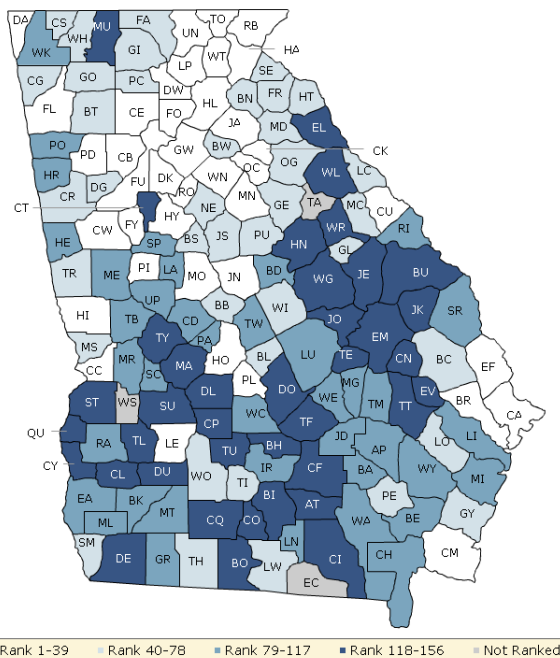
**HEALTH OUTCOMES**



County	Rank	County	Rank	County	Rank	County	Rank
Appling	141	Dade	81	Jefferson	126	Richmond	117
Atkinson	59	Dawson	15	Jenkins	129	Rockdale	16
Bacon	143	Decatur	89	Johnson	91	Schley	57
Baker	104	DeKalb	18	Jones	50	Screven	132
Baldwin	84	Dodge	138	Lamar	118	Seminole	48
Banks	44	Dooly	103	Lanier	56	Spalding	109
Barrow	40	Dougherty	114	Laurens	99	Stephens	123
Bartow	51	Douglas	36	Lee	19	Stewart	153
Ben Hill	134	Early	150	Liberty	49	Sumter	64
Berrien	79	Echols	NR	Lincoln	72	Talbot	156
Bibb	116	Effingham	28	Long	90	Taliaferro	NR
Bleckley	92	Elbert	136	Lowndes	54	Tattnall	130
Brantley	140	Emanuel	122	Lumpkin	23	Taylor	115
Brooks	107	Evans	127	Macon	142	Telfair	135
Bryan	12	Fannin	108	Madison	68	Terrell	155
Bulloch	29	Fayette	1	Marion	144	Thomas	76
Burke	151	Floyd	75	McDuffie	125	Tift	70
Butts	83	Forsyth	2	McIntosh	82	Toombs	80
Calhoun	154	Franklin	47	Meriwether	88	Towns	8
Camden	25	Fulton	26	Miller	120	Treutlen	65
Candler	66	Gilmer	58	Mitchell	87	Troup	69
Carroll	33	Glascocock	152	Monroe	41	Turner	146
Catoosa	37	Glynn	63	Montgomery	52	Twiggs	121
Charlton	110	Gordon	45	Morgan	10	Union	31
Chatham	61	Grady	86	Murray	106	Upson	111
Chattahoochee	24	Greene	74	Muscogee	95	Walker	102

County	Rank	County	Rank	County	Rank	County	Rank
Chattooga	113	Gwinnett	5	Newton	39	Walton	13
Cherokee	4	Habersham	11	Oconee	3	Ware	133
Clarke	20	Hall	9	Oglethorpe	38	Warren	97
Clay	100	Hancock	94	Paulding	32	Washington	139
Clayton	46	Haralson	96	Peach	98	Wayne	128
Clinch	119	Harris	21	Pickens	27	Webster	NR
Cobb	6	Hart	67	Pierce	93	Wheeler	77
Coffee	112	Heard	105	Pike	35	White	42
Colquitt	85	Henry	17	Polk	124	Whitfield	34
Columbia	7	Houston	22	Pulaski	60	Wilcox	137
Cook	101	Irwin	62	Putnam	73	Wilkes	71
Coweta	14	Jackson	53	Quitman	149	Wilkinson	148
Crawford	43	Jasper	55	Rabun	30	Worth	78
Crisp	145	Jeff Davis	131	Randolph	147		

### HEALTH FACTORS



County	Rank	County	Rank	County	Rank	County	Rank
Appling	104	Dade	27	Jefferson	136	Richmond	90
Atkinson	154	Dawson	16	Jenkins	155	Rockdale	39
Bacon	106	Decatur	148	Johnson	125	Schley	82
Baker	105	DeKalb	22	Jones	18	Screven	98
Baldwin	92	Dodge	127	Lamar	83	Seminole	69
Banks	43	Dooly	142	Lanier	110	Spalding	112
Barrow	70	Dougherty	123	Laurens	85	Stephens	48
Bartow	51	Douglas	42	Lee	10	Stewart	152
Ben Hill	150	Early	97	Liberty	101	Sumter	141
Berrien	128	Echols	NR	Lincoln	73	Talbot	94
Bibb	65	Effingham	28	Long	47	Taliaferro	NR
Bleckley	52	Elbert	144	Lowndes	62	Tattnell	138
Brantley	100	Emanuel	132	Lumpkin	14	Taylor	135
Brooks	126	Evans	122	Macon	146	Telfair	153
Bryan	11	Fannin	55	Madison	68	Terrell	149
Bulloch	49	Fayette	1	Marion	115	Thomas	56
Burke	129	Floyd	26	McDuffie	53	Tift	77
Butts	66	Forsyth	3	McIntosh	79	Toombs	113
Calhoun	131	Franklin	50	Meriwether	89	Towns	9
Camden	30	Fulton	20	Miller	84	Treutlen	140
Candler	137	Gilmer	76	Mitchell	109	Troup	60
Carroll	58	Glascocock	46	Monroe	29	Turner	124
Catoosa	44	Glynn	41	Montgomery	99	Twiggs	81
<b>Charlton</b>	<b>95</b>	<b>Gordon</b>	<b>74</b>	<b>Morgan</b>	<b>17</b>	<b>Union</b>	<b>24</b>
Chatham	25	Grady	107	Murray	133	Upson	86
Chattahoochee	38	Greene	63	Muscogee	61	Walker	80



County	Rank	County	Rank	County	Rank	County	Rank
Chattooga	72	Gwinnett	8	Newton	67	Walton	35
Cherokee	6	Habersham	32	Oconee	2	Ware	114
Clarke	23	Hall	34	Oglethorpe	45	Warren	139
Clay	145	Hancock	151	Paulding	21	Washington	118
Clayton	120	Haralson	87	Peach	102	Wayne	117
Clinch	130	Harris	5	Pickens	40	Webster	NR
Cobb	7	Hart	59	Pierce	64	Wheeler	103
Coffee	156	Heard	96	Pike	33	White	15
Colquitt	121	Henry	12	Polk	88	Whitfield	78
Columbia	4	Houston	19	Pulaski	36	Wilcox	108
Cook	134	Irwin	91	Putnam	57	Wilkes	119
Coweta	13	Jackson	31	Quitman	147	Wilkinson	71
Crawford	93	Jasper	54	Rabun	37	Worth	75
Crisp	143	Jeff Davis	116	Randolph	111		

## Summary Health Outcomes & Health Factors Rankings

Counties receive two summary ranks:

- Health Outcomes
- Health Factors

Each of these ranks represents a weighted summary of a number of measures.

Health outcomes represent how healthy a county is while health factors represent what influences the health of the county.

Rank	Health Outcomes	Rank	Health Factors
1	Fayette	1	Fayette
2	Forsyth	2	Oconee
3	Oconee	3	Forsyth
4	Cherokee	4	Columbia
5	Gwinnett	5	Harris
6	Cobb	6	Cherokee
7	Columbia	7	Cobb
8	Towns	8	Gwinnett
9	Hall	9	Towns
10	Morgan	10	Lee
11	Habersham	11	Bryan
12	Bryan	12	Henry
13	Walton	13	Coweta
14	Coweta	14	Lumpkin
15	Dawson	15	White
16	Rockdale	16	Dawson
17	Henry	17	Morgan
18	DeKalb	18	Jones
19	Lee	19	Houston
20	Clarke	20	Fulton
21	Harris	21	Paulding
22	Houston	22	DeKalb
23	Lumpkin	23	Clarke
24	Chattahoochee	24	Union
25	Camden	25	Chatham
26	Fulton	26	Floyd
27	Pickens	27	Dade
28	Effingham	28	Effingham
29	Bulloch	29	Monroe
30	Rabun	30	Camden
31	Union	31	Jackson
32	Paulding	32	Habersham
33	Carroll	33	Pike
34	Whitfield	34	Hall
35	Pike	35	Walton
36	Douglas	36	Pulaski
37	Catoosa	37	Rabun
38	Oglethorpe	38	Chattahoochee
39	Newton	39	Rockdale
40	Barrow	40	Pickens
41	Monroe	41	Glynn
42	White	42	Douglas

Rank	Health Outcomes	Rank	Health Factors
43	Crawford	43	Banks
44	Banks	44	Catoosa
45	Gordon	45	Oglethorpe
46	Clayton	46	Glascok
47	Franklin	47	Long
48	Seminole	48	Stephens
49	Liberty	49	Bulloch
50	Jones	50	Franklin
51	Bartow	51	Bartow
52	Montgomery	52	Bleckley
53	Jackson	53	McDuffie
54	Lowndes	54	Jasper
55	Jasper	55	Fannin
56	Lanier	56	Thomas
57	Schley	57	Putnam
58	Gilmer	58	Carroll
59	Atkinson	59	Hart
60	Pulaski	60	Troup
61	Chatham	61	Muscogee
62	Irwin	62	Lowndes
63	Glynn	63	Greene
64	Sumter	64	Pierce
65	Treutlen	65	Bibb
66	Candler	66	Butts
67	Hart	67	Newton
68	Madison	68	Madison
69	Troup	69	Seminole
70	Tift	70	Barrow
71	Wilkes	71	Wilkinson
72	Lincoln	72	Chattooga
73	Putnam	73	Lincoln
74	Greene	74	Gordon
75	Floyd	75	Worth
76	Thomas	76	Gilmer
77	Wheeler	77	Tift
78	Worth	78	Whitfield
79	Berrien	79	McIntosh
80	Toombs	80	Walker
81	Dade	81	Twiggs
82	McIntosh	82	Schley
83	Butts	83	Lamar
84	Baldwin	84	Miller
85	Colquitt	85	Laurens
86	Grady	86	Upson
87	Mitchell	87	Haralson
88	Meriwether	88	Polk
89	Decatur	89	Meriwether
90	Long	90	Richmond

Rank	Health Outcomes	Rank	Health Factors
91	Johnson	91	Irwin
92	Bleckley	92	Baldwin
93	Pierce	93	Crawford
94	Hancock	94	Talbot
95	Muscogee	95	Charlton
96	Haralson	96	Heard
97	Warren	97	Early
98	Peach	98	Screven
99	Laurens	99	Montgomery
100	Clay	100	Brantley
101	Cook	101	Liberty
102	Walker	102	Peach
103	Dooly	103	Wheeler
104	Baker	104	Appling
105	Heard	105	Baker
106	Murray	106	Bacon
107	Brooks	107	Grady
108	Fannin	108	Wilcox
109	Spalding	109	Mitchell
110	Charlton	110	Lanier
111	Upson	111	Randolph
112	Coffee	112	Spalding
113	Chattooga	113	Toombs
114	Dougherty	114	Ware
115	Taylor	115	Marion
116	Bibb	116	Jeff Davis
117	Richmond	117	Wayne
118	Lamar	118	Washington
119	Clinch	119	Wilkes
120	Miller	120	Clayton
121	Twiggs	121	Colquitt
122	Emanuel	122	Evans
123	Stephens	123	Dougherty
124	Polk	124	Turner
125	McDuffie	125	Johnson
126	Jefferson	126	Brooks
127	Evans	127	Dodge
128	Wayne	128	Berrien
129	Jenkins	129	Burke
130	Tattnell	130	Clinch
131	Jeff Davis	131	Calhoun
132	Screven	132	Emanuel
133	Ware	133	Murray
134	Ben Hill	134	Cook
135	Telfair	135	Taylor
136	Elbert	136	Jefferson
137	Wilcox	137	Candler
138	Dodge	138	Tattnell

Rank	Health Outcomes	Rank	Health Factors
139	Washington	139	Warren
140	Brantley	140	Treutlen
141	Appling	141	Sumter
142	Macon	142	Dooly
143	Bacon	143	Crisp
144	Marion	144	Elbert
145	Crisp	145	Clay
146	Turner	146	Macon
147	Randolph	147	Quitman
148	Wilkinson	148	Decatur
149	Quitman	149	Terrell
150	Early	150	Ben Hill
151	Burke	151	Hancock
152	Glascok	152	Stewart
153	Stewart	153	Telfair
154	Calhoun	154	Atkinson
155	Terrell	155	Jenkins
156	Talbot	156	Coffee

**Not Ranked:** Echols, Taliaferro, Webster

## 2012 County Health Rankings: Measures, Data Sources, and Years of Data

	Measure	Data Source	Years of Data
<b>HEALTH OUTCOMES</b>			
<b>Mortality</b>	Premature death	National Center for Health Statistics	2006-2008
<b>Morbidity</b>	Poor or fair health	Behavioral Risk Factor Surveillance System	2004-2010
	Poor physical health days	Behavioral Risk Factor Surveillance System	2004-2010
	Poor mental health days	Behavioral Risk Factor Surveillance System	2004-2010
	Low birthweight	National Center for Health Statistics	2002-2008
<b>HEALTH FACTORS</b>			
<b>HEALTH BEHAVIORS</b>			
<b>Tobacco Use</b>	Adult smoking	Behavioral Risk Factor Surveillance System	2004-2010
<b>Diet and Exercise</b>	Adult obesity	National Center for Chronic Disease Prevention and Health Promotion	2009
	Physical inactivity	National Center for Chronic Disease Prevention and Health Promotion	2009
<b>Alcohol Use</b>	Excessive drinking	Behavioral Risk Factor Surveillance System	2004-2010
	Motor vehicle crash death rate	National Center for Health Statistics	2002-2008
<b>Sexual Activity</b>	Sexually transmitted infections	National Center for Hepatitis, HIV, STD and TB Prevention	2009
	Teen birth rate	National Center for Health Statistics	2002-2008
<b>CLINICAL CARE</b>			
<b>Access to Care</b>	Uninsured	Small Area Health Insurance Estimates	2009
	Primary care physicians	Health Resources & Services Administration	2009
<b>Quality of Care</b>	Preventable hospital stays	Medicare/Dartmouth Institute	2009
	Diabetic screening	Medicare/Dartmouth Institute	2009
	Mammography screening	Medicare/Dartmouth Institute	2009
<b>SOCIAL AND ECONOMIC FACTORS</b>			
<b>Education</b>	High school graduation	National Center for Education Statistics and state-specific sources <sup>1</sup>	2008-2010
	Some college	American Community Survey	2006-2010
<b>Employment</b>	Unemployment	Bureau of Labor Statistics	2010
<b>Income</b>	Children in poverty	Small Area Income and Poverty Estimates	2010
<b>Family and Social Support</b>	Inadequate social support	Behavioral Risk Factor Surveillance System	2006-2010
	Children in single-parent households	American Community Survey	2006-2010
<b>Community Safety</b>	Violent crime rate <sup>2</sup>	Federal Bureau of Investigation	2007-2009
<b>PHYSICAL ENVIRONMENT</b>			
<b>Environmental Quality</b> <sup>3</sup>	Air pollution-particulate matter days	U.S. Environmental Protection Agency	2007
	Air pollution-ozone days	U.S. Environmental Protection Agency	2007
<b>Built Environment</b>	Access to recreational facilities	Census County Business Patterns	2009
	Limited access to healthy foods <sup>4</sup>	U.S. Department of Agriculture	2006
	Fast food restaurants	Census County Business Patterns	2009

<sup>1</sup> NCES used for AK, AL, AR, CA, CT, FL, HI, ID, KY, MT, ND, NJ, OK, SD and TN

<sup>2</sup> State data source for IL.

<sup>3</sup> Not available for AK and HI.

<sup>4</sup> Access to Healthy Foods (2009) from Census Zip Code Business Patterns for AK and HI.

CREDITS

**Report Authors**

University of Wisconsin-Madison  
School of Medicine and Public Health  
Department of Population Health Sciences  
Population Health Institute

Bridget Booske Catlin, PhD, MHSA  
Amanda Jovaag, MS  
Patrick Remington, MD, MPH

This publication would not have been possible without the following contributions:

**Technical Advisor**

Amy Bernstein, ScD, Centers for Disease Control and Prevention

**Research Assistance**

Jennifer Buechner  
Hyojun Park, MA  
Jennifer Robinson  
Matthew Rodock, MPH  
Anne Roubal

**Communications and Outreach**

Burness Communications  
Anna Grilley  
Anna Graupner, MPH  
Kate Konkle, MPH  
Angela Russell, MS  
Julie Willems Van Dijk, PhD, RN

**Design**

Forum One, Alexandria, VA  
Media Solutions, UW School of Medicine and Public Health

**Robert Wood Johnson Foundation**

Brenda L. Henry, PhD, MPH – Senior Program Officer  
Abbey Cofsky, MPH – Program Officer  
Michelle Larkin, JD, MS, RN – Assistant Vice-President and Deputy Director, Health Group  
James S. Marks, MD, MPH – Senior Vice-President and Group Director, Health Group  
Joe Marx – Senior Communications Officer

Suggested citation: University of Wisconsin Population Health Institute. *County Health Rankings 2012*.



**County Health  
Rankings & Roadmaps**  
A Healthier Nation, County by County

[countyhealthrankings.org](http://countyhealthrankings.org)



**University of Wisconsin Population Health Institute**  
610 Walnut St, #524, Madison, WI 53726  
(608) 265-6370 / [info@countyhealthrankings.org](mailto:info@countyhealthrankings.org)

