

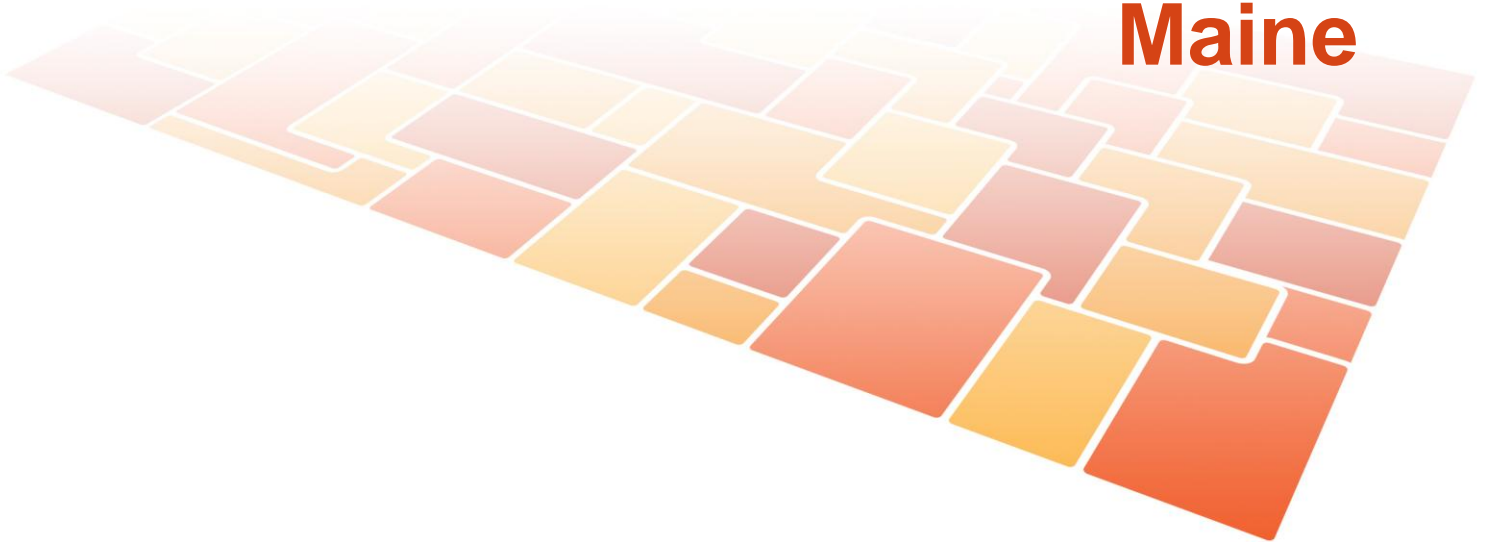


County Health Rankings

Mobilizing Action Toward Community Health

2010

Maine



Robert Wood Johnson Foundation



UNIVERSITY OF WISCONSIN

Population Health Institute

Translating Research into Policy and Practice

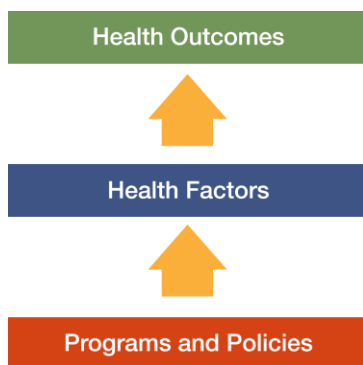
Introduction

Where we live matters to our health. The health of a community depends on many different factors, including quality of health care, individual behavior, education and jobs, and the environment. We can improve a community's health through programs and policies. For example, people who live in communities with ample park and recreation space are more likely to exercise, which reduces heart disease risk. People who live in communities with smoke-free laws are less likely to smoke or to be exposed to second-hand smoke, which reduces lung cancer risk.

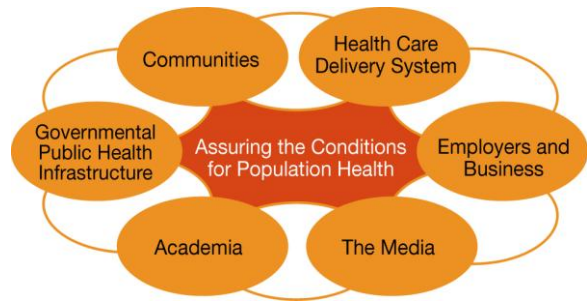
The problem is that there are big differences in health across communities, with some places being much healthier than others. And up to now, it has been hard to get a standard way to measure how healthy a county is and see where they can improve.

The Robert Wood Johnson Foundation and the University of Wisconsin Population Health Institute are pleased to present the 2010 *County Health Rankings*, a collection of 50 reports that reflect the overall health of counties in every state across the country. For the first time, counties can get a snapshot of how healthy their residents are by comparing their overall health and the factors that influence their health, with other counties in their state. This will allow them to see county-to-county where they are doing well and where they need to improve. Everyone has a stake in community health. We all need to work together to find solutions. The *County Health Rankings* serve as both a call to action and a needed tool in this effort.

All of the *County Health Rankings* are based upon this model of population health improvement:



In this model, health outcomes are measures that describe the current health status of a county. These health outcomes are influenced by a set of health factors. These health factors and their outcomes may also be affected by community-based programs and policies designed to alter their distribution in the community. Counties can improve health outcomes by addressing all health factors with effective, evidence-based programs and policies.



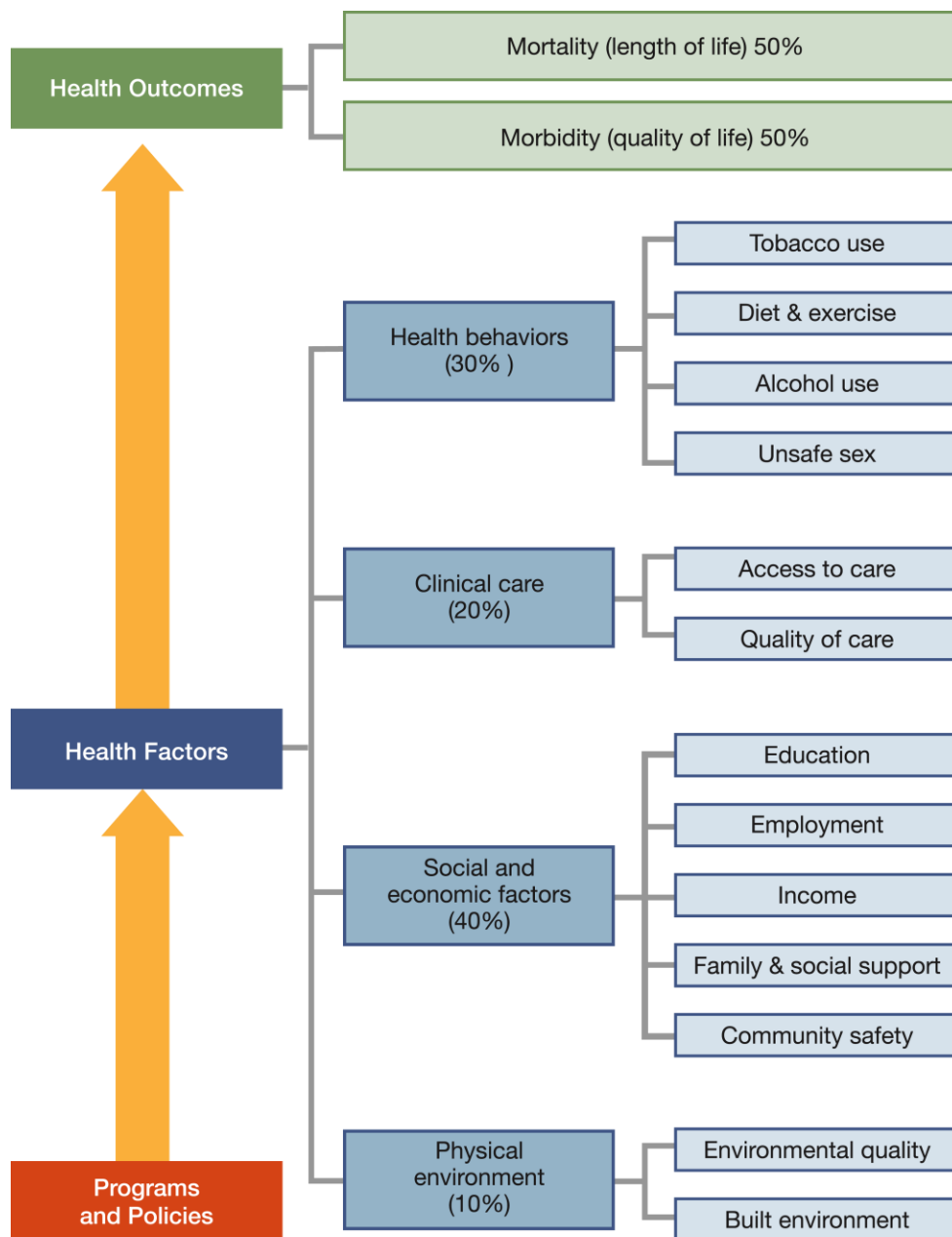
Institute of Medicine, 2002

To compile the *Rankings*, we built on our prior work in Wisconsin, worked closely with staff from the Centers for Disease Control and Prevention and Dartmouth College, and obtained input from a team of expert advisors. Together we selected a number of population health measures based on scientific relevance, importance, and availability of data at the county level. For a more detailed explanation of the choice of measures, see www.countyhealthrankings.org.

The Rankings

This report ranks Maine counties according to their summary measures of **health outcomes** and **health factors**, as well as the components used to create each summary measure. The figure below depicts the structure of the *Rankings* model. Counties receive a rank for each population health component; those having high ranks (e.g., 1 or 2) are estimated to be the “healthiest.”

Our summary **health outcomes** rankings are based on an equal weighting of mortality and morbidity measures. The summary **health factors** rankings are based on weighted scores of four types of factors: behavioral, clinical, social and economic, and environmental. The weights for the factors (shown in parentheses in the figure) are based upon a review of the literature and expert input but represent just one way of combining these factors.

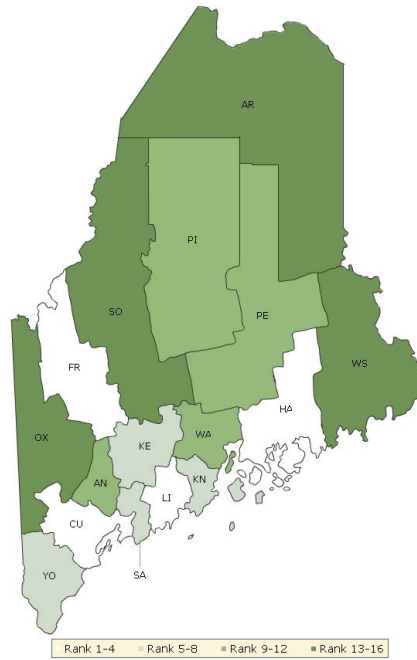


County Health Rankings model ©2010 UWPHI

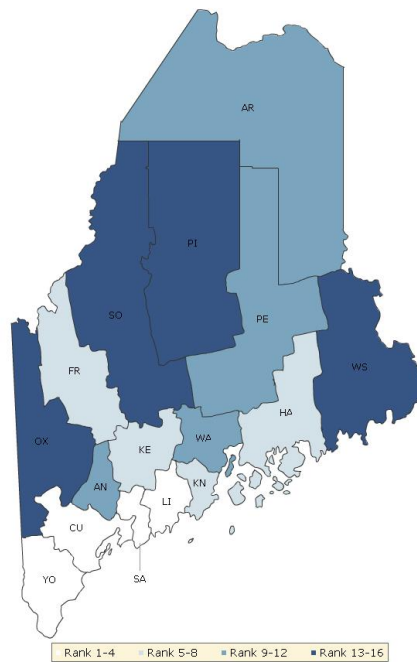
The maps on this page display Maine's counties divided into groups by health rank. The lighter colors indicate better performance in the respective summary rankings. The green map shows the distribution of summary health outcomes. The blue displays the distribution of the summary rank for health factors.

Maps help locate the healthiest and least healthy counties in the state. The health factors map appears similar to the health outcomes map, showing how health factors and health outcomes are closely related.

HEALTH OUTCOMES



HEALTH FACTORS



Summary Health Outcomes & Health Factors Rankings

Counties receive two summary ranks:

- Health Outcomes
- Health Factors

Each of these ranks represents a weighted summary of a number of measures.

Health outcomes represent how healthy a county is while health factors are what influences the health of the county.

Rank	Health Outcomes	Rank	Health Factors
1	Franklin	1	Cumberland
2	Hancock	2	Sagadahoc
3	Cumberland	3	York
4	Lincoln	4	Lincoln
5	York	5	Kennebec
6	Knox	6	Knox
7	Sagadahoc	7	Franklin
8	Kennebec	8	Hancock
9	Waldo	9	Penobscot
10	Penobscot	10	Waldo
11	Androscoggin	11	Androscoggin
12	Piscataquis	12	Aroostook
13	Aroostook	13	Oxford
14	Somerset	14	Piscataquis
15	Washington	15	Washington
16	Oxford	16	Somerset

Health Outcomes Rankings

The summary health outcomes ranking is based on measures of mortality and morbidity. Each county's ranks for mortality and morbidity are displayed here. The mortality rank, representing length of life, is based on a measure of premature death: the years of potential life lost prior to age 75.

The morbidity rank is based on measures that represent health-related quality of life and birth outcomes. We combine four morbidity measures: self-reported fair or poor health, poor physical health days, poor mental health days, and the percent of births with low birthweight.

Rank	Mortality	Morbidity
1	Franklin	Hancock
2	Lincoln	Franklin
3	York	Knox
4	Cumberland	Sagadahoc
5	Hancock	Cumberland
6	Sagadahoc	Waldo
7	Knox	York
8	Kennebec	Lincoln
9	Waldo	Kennebec
10	Somerset	Washington
11	Aroostook	Penobscot
12	Androscoggin	Piscataquis
13	Penobscot	Androscoggin
14	Piscataquis	Oxford
15	Oxford	Aroostook
16	Washington	Somerset

Health Factors Rankings

The summary health factors ranking is based on four factors: health behaviors, clinical care, social and economic, and physical environment factors. In turn, each of these factors is based on several measures. Health behaviors include measures of smoking, diet and exercise, alcohol use, and risky sex behavior. Clinical

care includes measures of access to care and quality of care. Social and economic factors include measures of education, employment, income, family and social support, and community safety. The physical environment includes measures of environmental quality and the built environment.

Rank	Health Behaviors	Clinical Care	Social & Economic Factors	Physical Environment
1	Cumberland	Cumberland	Sagadahoc	Aroostook
2	Lincoln	Kennebec	Cumberland	Sagadahoc
3	Knox	Androscoggin	York	Oxford
4	Franklin	Franklin	Hancock	Franklin
5	Hancock	Piscataquis	Penobscot	Somerset
6	Sagadahoc	Hancock	Knox	Piscataquis
7	York	Penobscot	Kennebec	Cumberland
8	Waldo	Sagadahoc	Lincoln	Kennebec
9	Aroostook	York	Waldo	York
10	Kennebec	Knox	Androscoggin	Androscoggin
11	Penobscot	Lincoln	Franklin	Knox
12	Piscataquis	Oxford	Aroostook	Waldo
13	Oxford	Somerset	Oxford	Washington
14	Androscoggin	Aroostook	Washington	Lincoln
15	Washington	Waldo	Somerset	Penobscot
16	Somerset	Washington	Piscataquis	Hancock

2010 County Health Rankings: Measures, Data Sources, and Years of Data

	Measure	Data Source	Years of Data
HEALTH OUTCOMES			
Mortality	Premature death	National Center for Health Statistics	2004-2006
Morbidity	Poor or fair health	Behavioral Risk Factor Surveillance System	2002-2008
	Poor physical health days	Behavioral Risk Factor Surveillance System	2002-2008
	Poor mental health days	Behavioral Risk Factor Surveillance System	2002-2008
	Low birthweight	National Center for Health Statistics	2000-2006
HEALTH FACTORS			
HEALTH BEHAVIORS			
Tobacco	Adult smoking	Behavioral Risk Factor Surveillance System	2002-2008
Diet and Exercise	Adult obesity	National Center for Chronic Disease Prevention and Health Promotion	2006-2008
Alcohol Use	Binge drinking	Behavioral Risk Factor Surveillance System	2002-2008
	Motor vehicle crash death rate	National Center for Health Statistics	2000-2006
High Risk Sexual Behavior	Chlamydia rate	National Center for Health Statistics	2007
	Teen birth rate	National Center for Health Statistics	2000-2006
CLINICAL CARE			
Access to Care	Uninsured adults	Small Area Health Insurance Estimates, U.S. Census	2005
	Primary care provider rate	Health Resources & Services Administration	2006
Quality of Care	Preventable hospital stays	Medicare/Dartmouth Institute	2005-2006
	Diabetic screening	Medicare/Dartmouth Institute	2003-2006
	Hospice use	Medicare/Dartmouth Institute	2001-2005
SOCIOECONOMIC FACTORS			
Education	High school graduation	National Center for Education Statistics ¹	2005-2006
	College degrees	U.S. Census/American Community Survey	2000/2005-2007
Employment	Unemployment	Bureau of Labor Statistics	2008
Income	Children in poverty	Small Area Income and Poverty Estimates, U.S. Census	2007
	Income inequality	U.S. Census/American Community Survey ²	2000/2005-2007
Family and Social Support	Inadequate social support	Behavioral Risk Factor Surveillance System	2005-2008
	Single-parent households	U.S. Census/American Community Survey	2000/2005-2007
Community Safety	Violent crime ³	Uniform Crime Reporting, Federal Bureau of Investigation	2005-2007
PHYSICAL ENVIRONMENT			
Air Quality⁴	Air pollution-particulate matter days	U.S. Environmental Protection Agency / Centers for Disease Control and Prevention	2005
	Air pollution-ozone days	U.S. Environmental Protection Agency / Centers for Disease Control and Prevention	2005
Built Environment	Access to healthy foods	Census Zip Code Business Patterns	2006
	Liquor store density	Census County Business Patterns	2006

¹ State data sources for KY, NH, NC, PA, SC, and UT (2007-2008).

² Income inequality estimates for 2000 were calculated by Mark L. Burkey, North Carolina Agricultural & Technical State University, www.ncat.edu/~burkeym/Gini.htm.

³ Homicide rate (2000-2006) from National Center for Health Statistics for AK, AZ, AR, CO, CT, GA, ID, IN, IA, KS, KY, LA, MN, MS, MT, NE, NH, NM, NC, ND, OH, SD, UT, and WV. State data source for IL.

⁴ Not available for AK and HI.

CREDITS

Report Editors

University of Wisconsin-Madison
 School of Medicine and Public Health
 Population Health Institute
 Bridget Booske, PhD, MHSA
 Jessica Athens, MS
 Patrick Remington, MD, MPH

This publication would not have been possible without the following contributions:

Conceptual Development

David Kindig, MD, PhD
 Paul Peppard, PhD
 Patrick Remington, MD, MPH

Technical Advisors

Amy Bernstein, ScD, Centers for Disease Control and Prevention
 Michele Bohm, MPH, Centers for Disease Control and Prevention
 Vickie Boothe, MPH, Centers for Disease Control and Prevention
 Ethan Burke, MD, MPH, Dartmouth Institute for Health Policy and Clinical Practice

Research Assistance

Clare O'Connor
 Karen Odegaard
 Hyojun Park
 Matthew Rodock

Production and Editing

Chuck Alexander
 Alex Field
 Joan Fischer
 Irene Golembiewski
 Jennifer Robinson

Design

Forum One, Alexandria, VA
 Media Solutions, UW School of Medicine and Public Health

Metrics Advisory Group

Yukiko Asada, PhD, Associate Professor, Community Health and Epidemiology, Dalhousie University, Halifax, Nova Scotia
 Tom Eckstein, MBA, Principal, Arundel Street Consulting Inc, St. Paul, MN
 Elliott Fisher, MD, MPH, Director, Center for Population Health, Dartmouth Institute for Health Policy and Clinical Practice, and
 Professor of Medicine and Community and Family Medicine, Dartmouth Medical School, Lebanon, NH
 Howard Frumkin, MD, MPH, Dr. PH, Director of the National Center for Environmental Health, ATSDR, CDC, Atlanta, GA
 Thomas Kottke, MD, MSPH, Medical Director for Evidence-Based Health, HealthPartners, Minneapolis, MN
 Ali Mokdad, PhD, Professor of Global Health, Institute for Health Metrics and Evaluation, University of Washington, Seattle, WA
 Roy Gibson Parrish, MD, Consultant in Population Health Information Systems, Peacham, VT
 Robert M. (Bobby) Pestronk, MPH, Executive Director, National Association of County and City Health Officials (NACCHO),
 Washington, DC
 Tom Ricketts, PhD, Professor of Health Policy and Administration, University of North Carolina
 Steven Teutsch, MD, MPH, Chief Science Officer, Los Angeles County Public Health, Los Angeles, CA
 Julie Willems Van Dijk, PhD, RN, former Marathon County, WI Health Officer

Suggested citation: University of Wisconsin Population Health Institute. *County Health Rankings 2010*.



County Health Rankings

Mobilizing Action Toward Community Health

countyhealthrankings.org

