

# County Health Rankings & Roadmaps

Building a Culture of Health, County by County

A Robert Wood Johnson Foundation program

## 2017 *County Health Rankings*

# Mississippi



A collaboration between the Robert Wood Johnson Foundation and the University of Wisconsin Population Health Institute.



Support  
provided by

Robert Wood Johnson  
Foundation

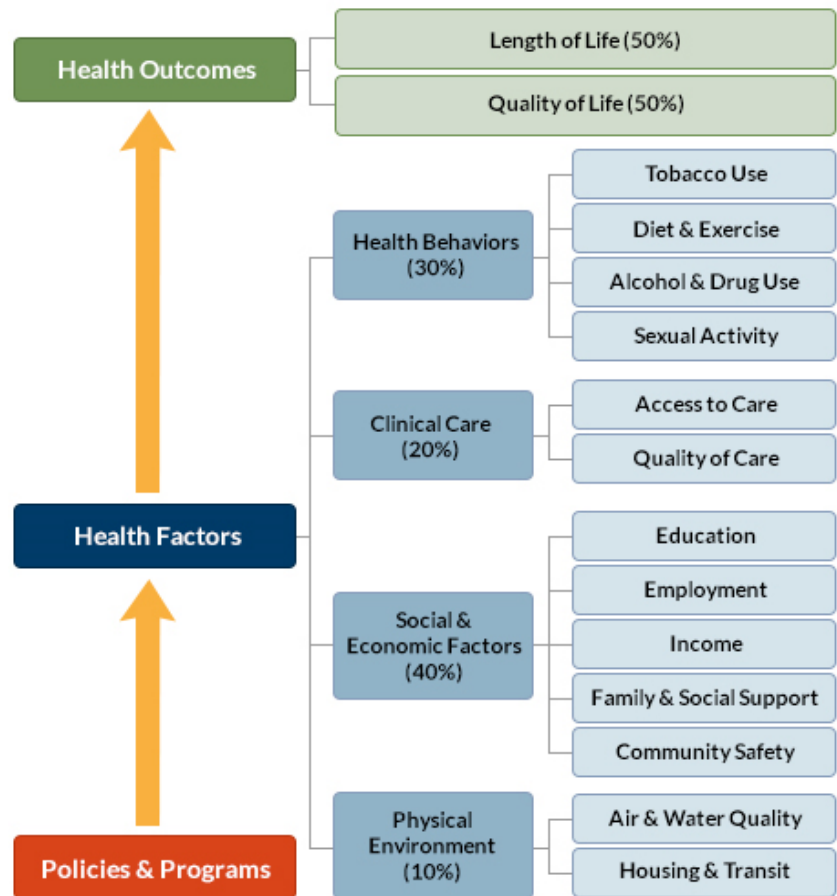


## INTRODUCTION

The *County Health Rankings & Roadmaps* program brings actionable data and strategies to communities to make it easier for people to be healthy in their homes, schools, workplaces, and neighborhoods. Ranking the health of nearly every county in the nation, the *County Health Rankings* illustrate what we know when it comes to what is making people sick or healthy. The *Roadmaps* show what we can do to create healthier places to live, learn, work, and play. The Robert Wood Johnson Foundation (RWJF) collaborates with the University of Wisconsin Population Health Institute (UWPHI) to bring this program to cities, counties, and states across the nation.

## WHAT ARE THE COUNTY HEALTH RANKINGS?

Published online at [countyhealthrankings.org](http://countyhealthrankings.org), the *Rankings* help counties understand what influences how healthy residents are and how long they will live. The *Rankings* are unique in their ability to measure the current overall health of nearly every county in all 50 states. They also look at a variety of measures that affect the future health of communities, such as high school graduation rates, access to healthy foods, rates of smoking, obesity, and teen births. Communities use the *Rankings* to help identify issues and opportunities for local health improvement, as well as to garner support for initiatives among government agencies, healthcare providers, community organizations, business leaders, policy makers, and the public.



## DIGGING DEEPER INTO HEALTH DATA

Although we know that a range of factors are important for good health, every state has communities that lack both opportunities to shape good health and strong policies to promote health for everyone. Some counties lag far behind others in how well and how long people live – which we refer to as a “health gap.” Find out what's driving health differences across your state and what can be done to close those gaps. Visit [countyhealthrankings.org/reports](http://countyhealthrankings.org/reports).

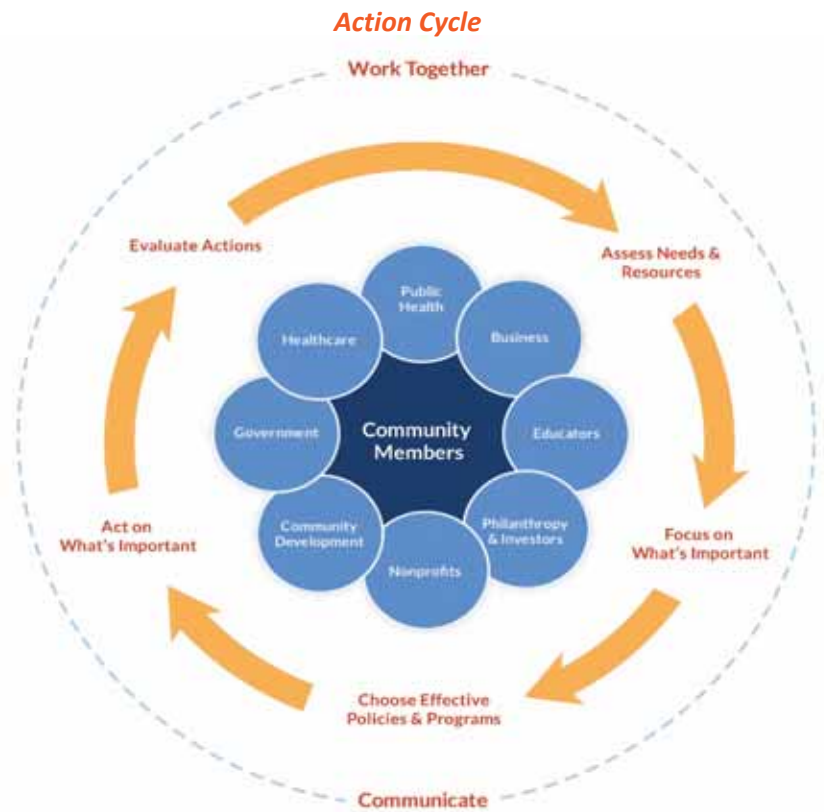
To further explore health gaps and other data sources in your community, check out the feature to [find more data](#) for your state and [dig deeper](#) on differences in health factors by geography or by population sub-groups. Visit [countyhealthrankings.org/using-the-rankings-data](http://countyhealthrankings.org/using-the-rankings-data).

## MOVING FROM DATA TO ACTION

*Roadmaps to Health* help communities bring people together to look at the many factors that influence health and opportunities to reduce health gaps, select strategies that can improve health for all, and make changes that will have a lasting impact. The *Roadmaps* focus on helping communities move from *awareness* about their county's ranking to *actions* designed to improve everyone's health. The *Roadmaps to Health* Action Center is a one-stop shop of information to help any community member or leader who wants to improve their community's health by addressing factors that we know influence health, such as education, income, and community safety.

Within the Action Center you will find:

- Online step-by-step guidance and tools to move through the Action Cycle
- [What Works for Health](#) – a searchable database of evidence-informed policies and programs that can improve health
- Webinars featuring local community members who share their tips on how to build a healthier community
- Community coaches, located across the nation, who provide customized consultation to local leaders who request guidance in how to accelerate their efforts to improve health. You can contact a coach by activating the Get Help button at [countyhealthrankings.org](http://countyhealthrankings.org)



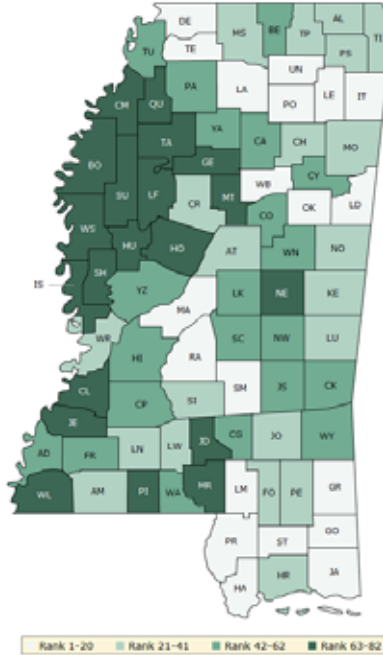
## HOW CAN YOU GET INVOLVED?

You might want to contact your local affiliate of United Way Worldwide, the National Association of Counties, Local Initiatives Support Corporation (LISC), or Neighborworks— their national parent organizations have partnered with us to raise awareness and stimulate action to improve health in their local members' communities. By connecting with other leaders interested in improving health, you can make a difference in your community. In communities large and small, people from all walks of life are taking ownership and action to improve health. Visit [countyhealthrankings.org](http://countyhealthrankings.org) to get ideas and guidance on how you can take action in your community. Working with others, you can improve the health of your community.

### HOW DO COUNTIES RANK FOR HEALTH OUTCOMES?

The green map below shows the distribution of Mississippi's **health outcomes**, based on an equal weighting of length and quality of life.

Lighter shades indicate better performance in the respective summary rankings. Detailed information on the underlying measures is available at [countyhealthrankings.org](http://countyhealthrankings.org).

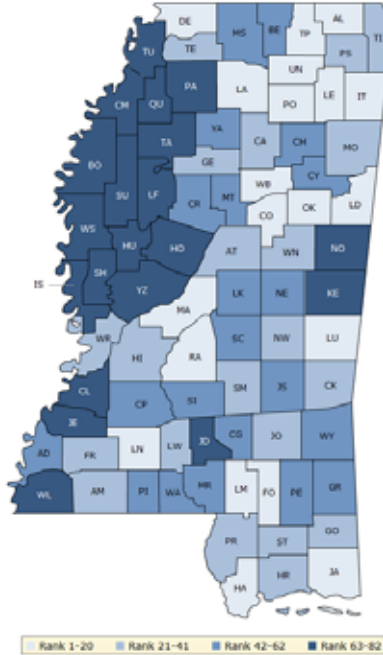


County	Rank	County	Rank	County	Rank	County	Rank
Adams	53	Grenada	64	Lincoln	28	Simpson	35
Alcorn	32	Hancock	6	Lowndes	17	Smith	9
Amite	36	Harrison	24	Madison	5	Stone	11
Attala	31	Hinds	46	Marion	69	Sunflower	74
Benton	42	Holmes	81	Marshall	40	Tallahatchie	71
Bolivar	72	Humphreys	79	Monroe	21	Tate	15
Calhoun	43	Issaquena	73	Montgomery	68	Tippah	26
Carroll	22	Itawamba	18	Neshoba	65	Tishomingo	25
Chickasaw	23	Jackson	8	Newton	54	Tunica	60
Choctaw	44	Jasper	56	Noxubee	34	Union	13
Claiborne	76	Jefferson	80	Oktibbeha	14	Walthall	49
Clarke	45	Jefferson Davis	78	Panola	51	Warren	27
Clay	57	Jones	29	Pearl River	20	Washington	67
Coahoma	82	Kemper	38	Perry	30	Wayne	52
Copiah	62	Lafayette	4	Pike	63	Webster	12
Covington	48	Lamar	3	Pontotoc	7	Wilkinson	66
DeSoto	1	Lauderdale	41	Prentiss	37	Winston	58
Forrest	39	Lawrence	33	Quitman	75	Yalobusha	59
Franklin	47	Leake	61	Rankin	2	Yazoo	55
George	16	Lee	19	Scott	50		
Greene	10	Leflore	70	Sharkey	77		

## HOW DO COUNTIES RANK FOR HEALTH FACTORS?

The blue map displays Mississippi’s summary ranks for **health factors**, based on weighted scores for health behaviors, clinical care, social and economic factors, and the physical environment.

Lighter shades indicate better performance in the respective summary rankings. Detailed information on the underlying measures is available at [countyhealthrankings.org](http://countyhealthrankings.org)



County	Rank	County	Rank	County	Rank	County	Rank
Adams	59	Grenada	28	Lincoln	15	Simpson	48
Alcorn	18	Hancock	12	Lowndes	11	Smith	30
Amite	41	Harrison	26	Madison	1	Stone	24
Attala	31	Hinds	34	Marion	46	Sunflower	74
Benton	53	Holmes	82	Marshall	52	Tallahatchie	65
Bolivar	64	Humphreys	76	Monroe	40	Tate	38
Calhoun	35	Issaquena	78	Montgomery	56	Tippah	20
Carroll	42	Itawamba	9	Neshoba	55	Tishomingo	23
Chickasaw	60	Jackson	7	Newton	32	Tunica	73
Choctaw	17	Jasper	43	Noxubee	72	Union	8
Claiborne	80	Jefferson	79	Oktibbeha	10	Walthall	57
Clarke	33	Jefferson Davis	69	Panola	63	Warren	36
Clay	54	Jones	29	Pearl River	21	Washington	71
Coahoma	75	Kemper	67	Perry	62	Wayne	58
Copiah	50	Lafayette	5	Pike	49	Webster	19
Covington	45	Lamar	3	Pontotoc	14	Wilkinson	70
DeSoto	4	Lauderdale	16	Prentiss	22	Winston	39
Forrest	13	Lawrence	37	Quitman	81	Yalobusha	47
Franklin	25	Leake	61	Rankin	2	Yazoo	68
George	27	Lee	6	Scott	51		
Greene	44	Leflore	77	Sharkey	66		

## 2017 COUNTY HEALTH RANKINGS: MEASURES AND NATIONAL/STATE RESULTS

Measure	Description	US Median	State Overall	State Minimum	State Maximum
<b>HEALTH OUTCOMES</b>					
Premature death	Years of potential life lost before age 75 per 100,000 population	7,700	10,100	7,000	16,100
Poor or fair health	% of adults reporting fair or poor health	16%	22%	15%	37%
Poor physical health days	Average # of physically unhealthy days reported in past 30 days	3.8	4.4	3.2	5.8
Poor mental health days	Average # of mentally unhealthy days reported in past 30 days	3.8	4.6	3.6	5.1
Low birthweight	% of live births with low birthweight (< 2500 grams)	8%	12%	8%	19%
<b>HEALTH FACTORS</b>					
<b>HEALTH BEHAVIORS</b>					
Adult smoking	% of adults who are current smokers	17%	23%	15%	28%
Adult obesity	% of adults that report a BMI $\geq$ 30	31%	35%	29%	48%
Food environment index	Index of factors that contribute to a healthy food environment, (0-10)	7.3	5.5	1.4	7.7
Physical inactivity	% of adults aged 20 and over reporting no leisure-time physical activity	26%	32%	25%	39%
Access to exercise opportunities	% of population with adequate access to locations for physical activity	62%	57%	1%	83%
Excessive drinking	% of adults reporting binge or heavy drinking	17%	13%	9%	17%
Alcohol-impaired driving deaths	% of driving deaths with alcohol involvement	30%	23%	0%	58%
Sexually transmitted infections	# of newly diagnosed chlamydia cases per 100,000 population	294.8	655.4	220.2	1,655.1
Teen births	# of births per 1,000 female population ages 15-19	38	52	15	98
<b>CLINICAL CARE</b>					
Uninsured	% of population under age 65 without health insurance	14%	17%	12%	22%
Primary care physicians	Ratio of population to primary care physicians	2,030:1	1,900:1	1,400:0	680:1
Dentists	Ratio of population to dentists	2,570:1	2,240:1	1,340:0	1,100:1
Mental health providers	Ratio of population to mental health providers	1,105:1	820:1	20,570:1	200:1
Preventable hospital stays	# of hospital stays for ambulatory-care sensitive conditions per 1,000 Medicare enrollees	56	68	32	133
Diabetes monitoring	% of diabetic Medicare enrollees ages 65-75 that receive HbA1c monitoring	86%	84%	68%	92%
Mammography screening	% of female Medicare enrollees ages 67-69 that receive mammography screening	61%	57%	45%	67%
<b>SOCIAL AND ECONOMIC FACTORS</b>					
High school graduation	% of ninth-grade cohort that graduates in four years	88%	76%	52%	90%
Some college	% of adults ages 25-44 with some post-secondary education	57%	58%	27%	78%
Unemployment	% of population aged 16 and older unemployed but seeking work	5.3%	6.5%	4.2%	16.9%
Children in poverty	% of children under age 18 in poverty	22%	32%	13%	60%
Income inequality	Ratio of household income at the 80th percentile to income at the 20th percentile	4.4	5.3	3.7	7.8
Children in single-parent households	% of children that live in a household headed by a single parent	32%	45%	27%	74%
Social associations	# of membership associations per 10,000 population	12.6	12.3	3.9	21.5
Violent crime	# of reported violent crime offenses per 100,000 population	198	271	22	753
Injury deaths	# of deaths due to injury per 100,000 population	77	83	47	161
<b>PHYSICAL ENVIRONMENT</b>					
Air pollution – particulate matter	Average daily density of fine particulate matter in micrograms per cubic meter (PM2.5)	9.2	9.5	8.4	10.4
Drinking water violations	Indicator of the presence of health-related drinking water violations. Yes - indicates the presence of a violation, No - indicates no violation.	NA	NA	No	Yes
Severe housing problems	% of households with overcrowding, high housing costs, or lack of kitchen or plumbing facilities	14%	17%	11%	24%
Driving alone to work	% of workforce that drives alone to work	81%	84%	74%	92%
Long commute – driving alone	Among workers who commute in their car alone, % commuting > 30 minutes	30%	31%	12%	58%

## 2017 COUNTY HEALTH RANKINGS: DATA SOURCES AND YEARS OF DATA

	Measure	Data Source	Years of Data
<b>HEALTH OUTCOMES</b>			
<b>Length of Life</b>	Premature death	National Center for Health Statistics – Mortality files	2012-2014
<b>Quality of Life</b>	Poor or fair health	Behavioral Risk Factor Surveillance System	2015
	Poor physical health days	Behavioral Risk Factor Surveillance System	2015
	Poor mental health days	Behavioral Risk Factor Surveillance System	2015
	Low birthweight	National Center for Health Statistics – Natality files	2008-2014
<b>HEALTH FACTORS</b>			
<b>HEALTH BEHAVIORS</b>			
<b>Tobacco Use</b>	Adult smoking	Behavioral Risk Factor Surveillance System	2015
<b>Diet and Exercise</b>	Adult obesity	CDC Diabetes Interactive Atlas	2013
	Food environment index	USDA Food Environment Atlas, Map the Meal Gap	2010 & 2014
<b>Alcohol and Drug Use</b>	Physical inactivity	CDC Diabetes Interactive Atlas	2013
	Access to exercise opportunities	Business Analyst, Delorme map data, ESRI, & US Census Tigerline Files	2010 & 2014
	Excessive drinking	Behavioral Risk Factor Surveillance System	2015
<b>Sexual Activity</b>	Alcohol-impaired driving deaths	Fatality Analysis Reporting System	2011-2015
<b>Sexual Activity</b>	Sexually transmitted infections	National Center for HIV/AIDS, Viral Hepatitis, STD, and TB Prevention	2014
	Teen births	National Center for Health Statistics - Natality files	2008-2014
<b>CLINICAL CARE</b>			
<b>Access to Care</b>	Uninsured	Small Area Health Insurance Estimates	2014
	Primary care physicians	Area Health Resource File/American Medical Association	2014
	Dentists	Area Health Resource File/National Provider Identification file	2015
	Mental health providers	CMS, National Provider Identification file	2016
<b>Quality of Care</b>	Preventable hospital stays	Dartmouth Atlas of Health Care	2014
	Diabetes monitoring	Dartmouth Atlas of Health Care	2014
	Mammography screening	Dartmouth Atlas of Health Care	2014
<b>SOCIAL AND ECONOMIC FACTORS</b>			
<b>Education</b>	High school graduation	EDFacts <sup>1</sup>	2014-2015
	Some college	American Community Survey	2011-2015
<b>Employment</b>	Unemployment	Bureau of Labor Statistics	2015
<b>Income</b>	Children in poverty	Small Area Income and Poverty Estimates	2015
	Income inequality	American Community Survey	2011-2015
<b>Family and Social Support</b>	Children in single-parent households	American Community Survey	2011-2015
	Social associations	County Business Patterns	2014
<b>Community Safety</b>	Violent crime	Uniform Crime Reporting – FBI	2012-2014
	Injury deaths	CDC WONDER mortality data	2011-2015
<b>PHYSICAL ENVIRONMENT</b>			
<b>Air and Water Quality</b>	Air pollution - particulate matter <sup>2</sup>	CDC National Environmental Public Health Tracking Network	2012
	Drinking water violations	Safe Drinking Water Information System	FY2013-14
<b>Housing and Transit</b>	Severe housing problems	Comprehensive Housing Affordability Strategy (CHAS) data	2009-2013
	Driving alone to work	American Community Survey	2011-2015
	Long commute – driving alone	American Community Survey	2011-2015

<sup>1</sup> State sources used for California and Texas.

<sup>2</sup> Not available for AK and HI.

## CREDITS

### Report Authors

University of Wisconsin-Madison  
School of Medicine and Public Health  
Department of Population Health Sciences  
Population Health Institute

Marjory Givens, PhD, MSPH  
Amanda Jovaag, MS  
Julie Willems Van Dijk, PhD, RN

Suggested citation: University of Wisconsin Population Health Institute. *County Health Rankings 2017*.

This publication would not have been possible without the following contributions:

### Data

Centers for Disease Control and Prevention: National Center for Health Statistics and National Center for Chronic Disease and Health Promotion  
Dartmouth Institute for Health Policy & Clinical Practice  
Measure of America

### Research Assistance

Paige Andrews  
Keith Gennuso, PhD  
Kathryn Hatchell  
Melissa Marver  
Elizabeth Pollock  
Jennifer Robinson  
Matthew Rodock, MPH  
Anne Roubal, MS, PhD

### Design and Communications

Forum One, Alexandria, VA  
Burness  
Kim Linsenmayer, MPA  
Matthew Call

### Communications and Outreach

Kate Kingery, MPA  
Kitty Jerome, MA  
Kate Konkle, MPH  
Mary Bennett, MFA  
Raquel Bournhonesque, MPH  
Ericka Burroughs-Girardi, MA, MPH  
Aliana Havrilla, MPA  
Antonia Lewis, MPH, HO  
Karen Odegaard, MPH  
Jan O'Neill, MPA  
Justin Rivas, MPH, MIPA  
Attica Scott, MS  
Jerry Spegman, JD  
Janna West Kowalski, MS

### Robert Wood Johnson Foundation

## County Health Rankings & Roadmaps

Building a Culture of Health, County by County

[countyhealthrankings.org](http://countyhealthrankings.org)



University of Wisconsin Population Health Institute  
610 Walnut St, #527, Madison, WI 53726  
(608) 265-8240 / [info@countyhealthrankings.org](mailto:info@countyhealthrankings.org)