

**County Health
Rankings & Roadmaps**

Building a Culture of Health, County by County

A Robert Wood Johnson Foundation program

2014 *Rankings* Texas



A collaboration between the Robert Wood Johnson Foundation and the University of Wisconsin Population Health Institute.



Support provided by

Robert Wood Johnson
Foundation



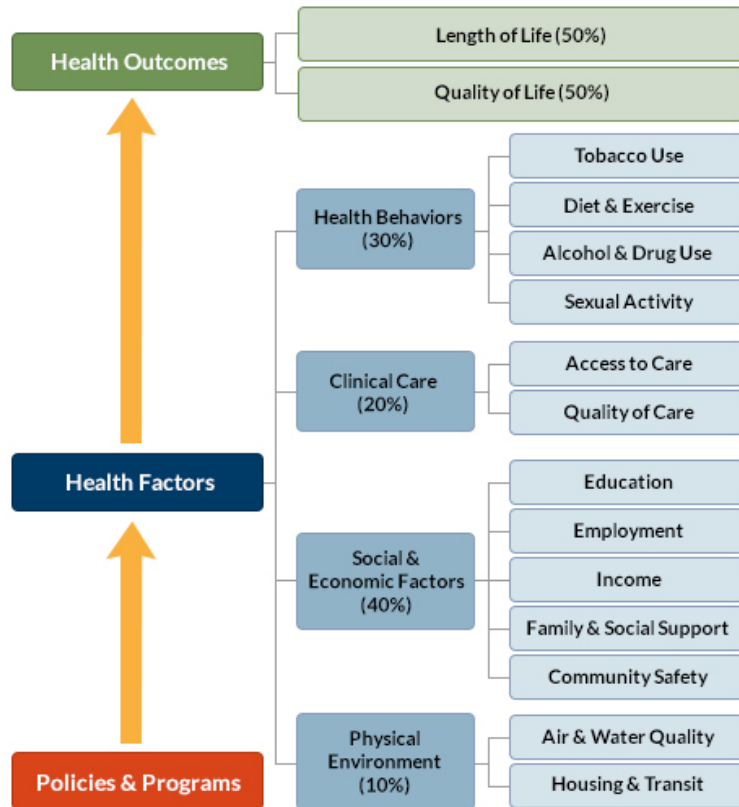
INSIDE FRONT COVER – INTENTIONALLY BLANK

INTRODUCTION

The *County Health Rankings & Roadmaps* program helps communities identify and implement solutions that make it easier for people to be healthy in their schools, workplaces, and neighborhoods. Ranking the health of nearly every county in the nation, the *County Health Rankings* illustrate *what we know* when it comes to what is making people sick or healthy. The *Roadmaps* show *what we can do* to create healthier places to live, learn, work, and play. The Robert Wood Johnson Foundation (RWJF) collaborates with the University of Wisconsin Population Health Institute (UWPHI) to bring this program to cities, counties, and states across the nation.

WHAT ARE THE COUNTY HEALTH RANKINGS?

The *County Health Rankings* measure the health of nearly every county in the nation. Published online at countyhealthrankings.org, the *Rankings* help counties understand what influences how healthy residents are and how long they will live. The *Rankings* look at a variety of measures that affect health, such as high school graduation rates, access to healthy foods, rates of smoking, obesity, and teen births. Based on data available for each county, the *Rankings* are unique in their ability to measure the overall health of each county in all 50 states. They have been used to garner support for local health improvement initiatives among government agencies, healthcare providers, community organizations, business leaders, policy makers, and the public.



HOW ARE PEOPLE USING THE RANKINGS?

- Ø Highlighting community success
- Ø Identifying root causes of poor health
- Ø Supporting policy change
- Ø Engaging communities in health improvement

For more information, visit countyhealthrankings.org

WHAT ARE THE ROADMAPS TO HEALTH?

The *Roadmaps to Health* help communities bring people together to look at the many factors that influence health, select strategies that work, and make changes that will have a lasting impact. The *Roadmaps* focus on helping communities determine what they can do and what they can learn from others.

What You Can Do

The *Roadmaps to Health* Action Center provides step-by-step guides, tools, and webinars to help groups working to improve the health of their communities. Community Coaches also provide customized consultation to local communities that have demonstrated a willingness to address factors that we know influence health, such as education, income, and community safety.

The Action Center also features *What Works for Health* – a searchable database of evidence-informed policies and programs that can improve health.

Learning From Others

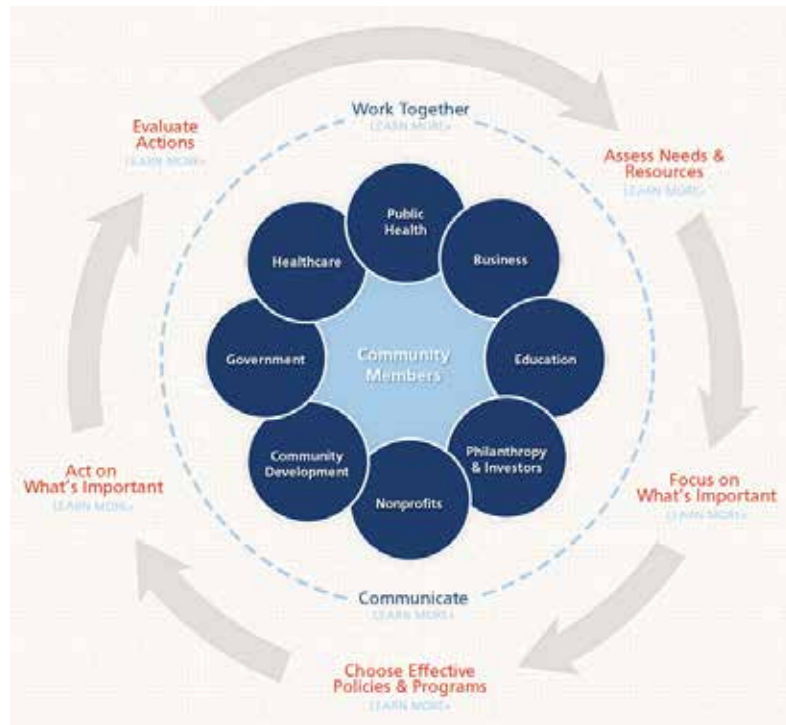
Honoring the efforts of communities working at the forefront of health improvement, the Robert Wood

Johnson Foundation annually awards the *RWJF Culture of Health Prize* to outstanding communities that are working toward better health. The *Prize* recognizes communities with strong and diverse partnerships that are coming together with a shared vision and commitment to address multiple factors that affect health and make lasting changes that create a culture of health for all. Visit countyhealthrankings.org or rwjf.org/prize to learn about the work of past prize winners.

At countyhealthrankings.org, we also feature stories from communities across the nation who have used data from the *County Health Rankings* or have engaged in strategies to improve health. For example, you can learn from the successes and challenges of the 30 *Roadmaps to Health* Community Grantees. These grantees are working to create positive policy or systems changes that address social and economic factors that influence how healthy people are and how long they live, such as education and community safety. You might also want to contact your local affiliate of United Way Worldwide, the National Business Coalition on Health, or the National Association of Counties - their national parent organizations have partnered with us to raise awareness and stimulate action to improve health in their local members' communities.

How can you get involved?

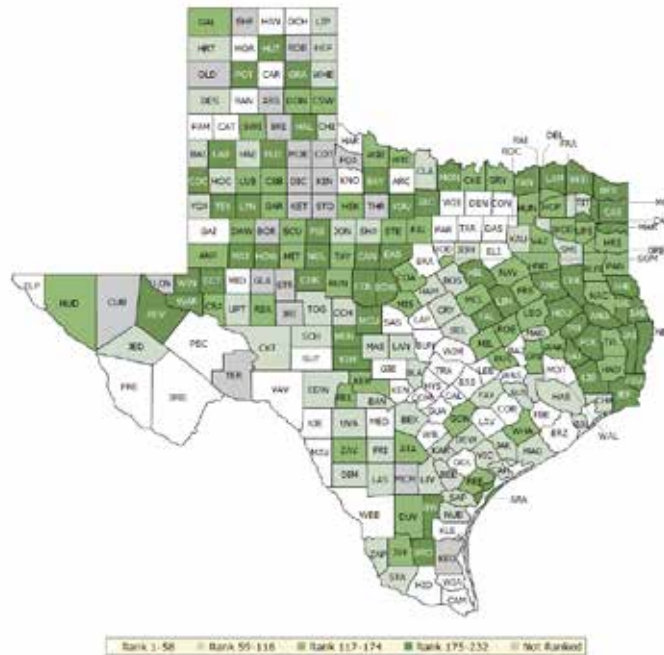
In communities large and small, people from all walks of life are taking ownership and action to improve health. Visit countyhealthrankings.org to get ideas and guidance on how you can take action in your community. Working with others, you can improve the health of your community.



The green map below shows the distribution of Texas's **health outcomes**, based on an equal weighting of length and quality of life.

Lighter colors indicate better performance in the respective summary rankings. Detailed information on the underlying measures is available on our web site.

HEALTH OUTCOMES RANKS



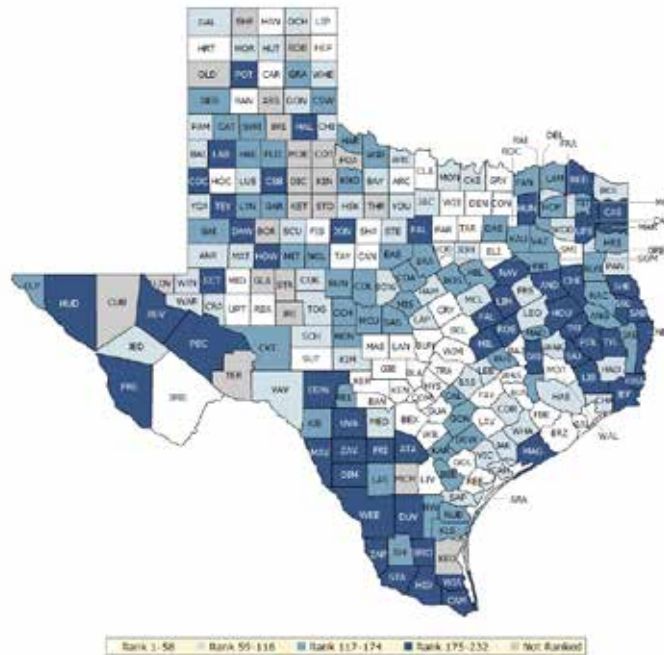
County	Rank	County	Rank	County	Rank	County	Rank
Anderson	196	Donley	155	Kaufman	94	Real	134
Andrews	164	Duval	169	Kendall	16	Red River	229
Angelina	182	Eastland	203	Kenedy	NR	Reeves	175
Aransas	217	Ector	181	Kent	NR	Refugio	124
Archer	50	Edwards	104	Kerr	150	Roberts	NR
Armstrong	NR	El Paso	48	Kimble	227	Robertson	171
Atascosa	141	Ellis	23	King	NR	Rockwall	6
Austin	75	Erath	18	Kinney	40	Runnels	172
Bailey	89	Falls	187	Kleberg	56	Rusk	159
Bandera	102	Fannin	188	Knox	36	Sabine	208
Bastrop	39	Fayette	81	La Salle	112	San Augustine	232
Baylor	189	Fisher	221	Lamar	184	San Jacinto	176
Bee	78	Floyd	186	Lamb	200	San Patricio	90
Bell	85	Foard	NR	Lampasas	22	San Saba	46
Bexar	69	Fort Bend	5	Lavaca	53	Schleicher	100
Blanco	70	Franklin	88	Lee	43	Scurry	118
Borden	NR	Freestone	119	Leon	138	Shackelford	68
Bosque	84	Frio	99	Liberty	199	Shelby	225
Bowie	194	Gaines	57	Limestone	230	Sherman	NR
Brazoria	24	Galveston	77	Lipscomb	111	Smith	63
Brazos	12	Garza	154	Live Oak	61	Somervell	143
Brewster	13	Gillespie	10	Llano	114	Starr	109
Briscoe	NR	Glasscock	NR	Loving	NR	Stephens	140
Brooks	228	Goliad	9	Lubbock	153	Sterling	NR
Brown	193	Gonzales	161	Lynn	191	Stonewall	NR
Burleson	123	Gray	201	Madison	71	Sutton	21

County	Rank	County	Rank	County	Rank	County	Rank
Burnet	14	Grayson	130	Marion	205	Swisher	139
Caldwell	52	Gregg	173	Martin	202	Tarrant	28
Calhoun	62	Grimes	135	Mason	87	Taylor	152
Callahan	178	Guadalupe	20	Matagorda	116	Terrell	NR
Cameron	45	Hale	86	Maverick	32	Terry	218
Camp	177	Hall	197	McCulloch	179	Throckmorton	NR
Carson	51	Hamilton	82	McLennan	137	Titus	83
Cass	222	Hansford	55	McMullen	NR	Tom Green	79
Castro	29	Hardeman	11	Medina	37	Travis	8
Chambers	66	Hardin	125	Menard	210	Trinity	192
Cherokee	183	Harris	59	Midland	38	Tyler	174
Childress	91	Harrison	165	Milam	148	Upshur	149
Clay	103	Hartley	65	Mills	162	Upton	107
Cochran	224	Haskell	131	Mitchell	128	Uvalde	60
Coke	216	Hays	7	Montague	180	Val Verde	41
Coleman	212	Hemphill	72	Montgomery	33	Van Zandt	160
Collin	3	Henderson	163	Moore	42	Victoria	95
Collingsworth	129	Hidalgo	34	Morris	215	Walker	142
Colorado	44	Hill	185	Motley	NR	Waller	80
Comal	15	Hockley	98	Nacogdoches	146	Ward	207
Comanche	122	Hood	35	Navarro	121	Washington	19
Concho	110	Hopkins	120	Newton	223	Webb	27
Cooke	126	Houston	214	Nolan	206	Wharton	132
Coryell	74	Howard	211	Nueces	96	Wheeler	92
Cottle	NR	Hudspeth	157	Ochiltree	54	Wichita	151
Crane	136	Hunt	127	Oldham	NR	Wilbarger	144
Crockett	64	Hutchinson	226	Orange	219	Willacy	31
Crosby	147	Irion	NR	Palo Pinto	168	Williamson	2
Culberson	NR	Jack	220	Panola	145	Wilson	49
Dallam	156	Jackson	105	Parker	25	Winkler	198
Dallas	58	Jasper	213	Parmer	17	Wise	26
Dawson	117	Jeff Davis	73	Pecos	47	Wood	167
Deaf Smith	106	Jefferson	190	Polk	231	Yoakum	93
Delta	170	Jim Hogg	158	Potter	209	Young	195
Denton	4	Jim Wells	204	Presidio	1	Zapata	76
DeWitt	113	Johnson	115	Rains	97	Zavala	133
Dickens	NR	Jones	108	Randall	30		
Dimmit	67	Karnes	101	Reagan	166		

The blue map displays Texas's summary ranks for **health factors**, based on weighted scores for health behaviors, clinical care, social and economic factors, and the physical environment.

Lighter colors indicate better performance in the respective summary rankings. Detailed information on the underlying measures is available on our web site.

HEALTH FACTORS RANKS



County	Rank	County	Rank	County	Rank	County	Rank
Anderson	178	Donley	65	Kaufman	122	Real	159
Andrews	76	Duval	195	Kendall	2	Red River	222
Angelina	125	Eastland	148	Kenedy	NR	Reeves	217
Aransas	100	Ector	188	Kent	NR	Refugio	56
Archer	28	Edwards	189	Kerr	35	Roberts	NR
Armstrong	NR	El Paso	137	Kimble	93	Robertson	183
Atascosa	181	Ellis	19	King	NR	Rockwall	8
Austin	46	Erath	135	Kinney	129	Runnels	147
Bailey	99	Falls	211	Kleberg	171	Rusk	133
Bandera	52	Fannin	168	Knox	160	Sabine	224
Bastrop	112	Fayette	41	La Salle	172	San Augustine	223
Baylor	62	Fisher	48	Lamar	145	San Jacinto	209
Bee	166	Floyd	152	Lamb	184	San Patricio	82
Bell	47	Foard	NR	Lampasas	87	San Saba	164
Bexar	54	Fort Bend	4	Lavaca	26	Schleicher	75
Blanco	27	Franklin	101	Lee	63	Scurry	109
Borden	NR	Freestone	73	Leon	104	Shackelford	33
Bosque	136	Frio	182	Liberty	220	Shelby	203
Bowie	86	Gaines	161	Limestone	221	Sherman	NR
Brazoria	21	Galveston	39	Lipscomb	58	Smith	40
Brazos	18	Garza	170	Live Oak	50	Somervell	24
Brewster	36	Gillespie	7	Llano	45	Starr	232
Briscoe	NR	Glasscock	NR	Loving	NR	Stephens	116
Brooks	229	Goliad	32	Lubbock	72	Sterling	NR
Brown	114	Gonzales	169	Lynn	153	Stonewall	NR
Burleson	134	Gray	143	Madison	146	Sutton	14

County	Rank	County	Rank	County	Rank	County	Rank
Burnet	51	Grayson	55	Marion	219	Swisher	126
Caldwell	173	Gregg	106	Martin	95	Tarrant	43
Calhoun	89	Grimes	187	Mason	20	Taylor	30
Callahan	31	Guadalupe	15	Matagorda	201	Terrell	NR
Cameron	212	Hale	162	Maverick	227	Terry	208
Camp	179	Hall	197	McCulloch	142	Throckmorton	NR
Carson	10	Hamilton	81	McLennan	84	Titus	140
Cass	185	Hansford	53	McMullen	NR	Tom Green	68
Castro	131	Hardeman	149	Medina	61	Travis	11
Chambers	59	Hardin	88	Menard	157	Trinity	226
Cherokee	215	Harris	90	Midland	37	Tyler	194
Childress	83	Harrison	154	Milam	186	Upshur	176
Clay	34	Hartley	25	Mills	128	Upton	49
Cochran	193	Haskell	108	Mitchell	155	Uvalde	205
Coke	85	Hays	16	Montague	97	Val Verde	115
Coleman	139	Hemphill	17	Montgomery	12	Van Zandt	124
Collin	1	Henderson	151	Moore	98	Victoria	102
Collingsworth	118	Hidalgo	225	Morris	190	Walker	113
Colorado	77	Hill	138	Motley	NR	Waller	156
Comal	9	Hockley	57	Nacogdoches	144	Ward	111
Comanche	150	Hood	22	Navarro	200	Washington	29
Concho	158	Hopkins	141	Newton	218	Webb	214
Cooke	67	Houston	191	Nolan	132	Wharton	92
Coryell	42	Howard	198	Nueces	127	Wheeler	69
Cottle	NR	Hudspeth	228	Ochiltree	79	Wichita	70
Crane	66	Hunt	199	Oldham	NR	Wilbarger	117
Crockett	120	Hutchinson	105	Orange	206	Willacy	230
Crosby	177	Irion	NR	Palo Pinto	196	Williamson	3
Culberson	NR	Jack	78	Panola	110	Wilson	13
Dallam	91	Jackson	64	Parker	23	Winkler	94
Dallas	130	Jasper	174	Parmer	74	Wise	38
Dawson	175	Jeff Davis	71	Pecos	204	Wood	96
Deaf Smith	165	Jefferson	210	Polk	207	Yoakum	60
Delta	107	Jim Hogg	163	Potter	192	Young	103
Denton	5	Jim Wells	167	Presidio	202	Zapata	216
DeWitt	121	Johnson	80	Rains	119	Zavala	231
Dickens	NR	Jones	180	Randall	6		
Dimmit	213	Karnes	123	Reagan	44		

Summary Health Outcomes & Health Factors Rankings

Counties receive two ranks:

- Health Outcomes
- Health Factors

Each of these ranks represents a weighted summary of a number of measures.

Health outcomes represent how healthy a county is while health factors represent what influences the health of the county.

Rank	Health Outcomes	Rank	Health Factors
1	Presidio	1	Collin
2	Williamson	2	Kendall
3	Collin	3	Williamson
4	Denton	4	Fort Bend
5	Fort Bend	5	Denton
6	Rockwall	6	Randall
7	Hays	7	Gillespie
8	Travis	8	Rockwall
9	Goliad	9	Comal
10	Gillespie	10	Carson
11	Hardeman	11	Travis
12	Brazos	12	Montgomery
13	Brewster	13	Wilson
14	Burnet	14	Sutton
15	Comal	15	Guadalupe
16	Kendall	16	Hays
17	Parmer	17	Hemphill
18	Erath	18	Brazos
19	Washington	19	Ellis
20	Guadalupe	20	Mason
21	Sutton	21	Brazoria
22	Lampasas	22	Hood
23	Ellis	23	Parker
24	Brazoria	24	Somervell
25	Parker	25	Hartley
26	Wise	26	Lavaca
27	Webb	27	Blanco
28	Tarrant	28	Archer
29	Castro	29	Washington
30	Randall	30	Taylor
31	Willacy	31	Callahan
32	Maverick	32	Goliad
33	Montgomery	33	Shackelford
34	Hidalgo	34	Clay
35	Hood	35	Kerr
36	Knox	36	Brewster
37	Medina	37	Midland
38	Midland	38	Wise
39	Bastrop	39	Galveston
40	Kinney	40	Smith
41	Val Verde	41	Fayette
42	Moore	42	Coryell

Rank	Health Outcomes	Rank	Health Factors
43	Lee	43	Tarrant
44	Colorado	44	Reagan
45	Cameron	45	Llano
46	San Saba	46	Austin
47	Pecos	47	Bell
48	El Paso	48	Fisher
49	Wilson	49	Upton
50	Archer	50	Live Oak
51	Carson	51	Burnet
52	Caldwell	52	Bandera
53	Lavaca	53	Hansford
54	Ochiltree	54	Bexar
55	Hansford	55	Grayson
56	Kleberg	56	Refugio
57	Gaines	57	Hockley
58	Dallas	58	Lipscomb
59	Harris	59	Chambers
60	Uvalde	60	Yoakum
61	Live Oak	61	Medina
62	Calhoun	62	Baylor
63	Smith	63	Lee
64	Crockett	64	Jackson
65	Hartley	65	Donley
66	Chambers	66	Crane
67	Dimmit	67	Cooke
68	Shackelford	68	Tom Green
69	Bexar	69	Wheeler
70	Blanco	70	Wichita
71	Madison	71	Jeff Davis
72	Hemphill	72	Lubbock
73	Jeff Davis	73	Freestone
74	Coryell	74	Parmer
75	Austin	75	Schleicher
76	Zapata	76	Andrews
77	Galveston	77	Colorado
78	Bee	78	Jack
79	Tom Green	79	Ochiltree
80	Waller	80	Johnson
81	Fayette	81	Hamilton
82	Hamilton	82	San Patricio
83	Titus	83	Childress
84	Bosque	84	McLennan
85	Bell	85	Coke
86	Hale	86	Bowie
87	Mason	87	Lampasas
88	Franklin	88	Hardin
89	Bailey	89	Calhoun
90	San Patricio	90	Harris

Rank	Health Outcomes	Rank	Health Factors
91	Childress	91	Dallam
92	Wheeler	92	Wharton
93	Yoakum	93	Kimble
94	Kaufman	94	Winkler
95	Victoria	95	Martin
96	Nueces	96	Wood
97	Rains	97	Montague
98	Hockley	98	Moore
99	Frio	99	Bailey
100	Schleicher	100	Aransas
101	Karnes	101	Franklin
102	Bandera	102	Victoria
103	Clay	103	Young
104	Edwards	104	Leon
105	Jackson	105	Hutchinson
106	Deaf Smith	106	Gregg
107	Upton	107	Delta
108	Jones	108	Haskell
109	Starr	109	Scurry
110	Concho	110	Panola
111	Lipscomb	111	Ward
112	La Salle	112	Bastrop
113	DeWitt	113	Walker
114	Llano	114	Brown
115	Johnson	115	Val Verde
116	Matagorda	116	Stephens
117	Dawson	117	Wilbarger
118	Scurry	118	Collingsworth
119	Freestone	119	Rains
120	Hopkins	120	Crockett
121	Navarro	121	DeWitt
122	Comanche	122	Kaufman
123	Burleson	123	Karnes
124	Refugio	124	Van Zandt
125	Hardin	125	Angelina
126	Cooke	126	Swisher
127	Hunt	127	Nueces
128	Mitchell	128	Mills
129	Collingsworth	129	Kinney
130	Grayson	130	Dallas
131	Haskell	131	Castro
132	Wharton	132	Nolan
133	Zavala	133	Rusk
134	Real	134	Burleson
135	Grimes	135	Erath
136	Crane	136	Bosque
137	McLennan	137	El Paso
138	Leon	138	Hill

Rank	Health Outcomes	Rank	Health Factors
139	Swisher	139	Coleman
140	Stephens	140	Titus
141	Atascosa	141	Hopkins
142	Walker	142	McCulloch
143	Somervell	143	Gray
144	Wilbarger	144	Nacogdoches
145	Panola	145	Lamar
146	Nacogdoches	146	Madison
147	Crosby	147	Runnels
148	Milam	148	Eastland
149	Upshur	149	Hardeman
150	Kerr	150	Comanche
151	Wichita	151	Henderson
152	Taylor	152	Floyd
153	Lubbock	153	Lynn
154	Garza	154	Harrison
155	Donley	155	Mitchell
156	Dallam	156	Waller
157	Hudspeth	157	Menard
158	Jim Hogg	158	Concho
159	Rusk	159	Real
160	Van Zandt	160	Knox
161	Gonzales	161	Gaines
162	Mills	162	Hale
163	Henderson	163	Jim Hogg
164	Andrews	164	San Saba
165	Harrison	165	Deaf Smith
166	Reagan	166	Bee
167	Wood	167	Jim Wells
168	Palo Pinto	168	Fannin
169	Duval	169	Gonzales
170	Delta	170	Garza
171	Robertson	171	Kleberg
172	Runnels	172	La Salle
173	Gregg	173	Caldwell
174	Tyler	174	Jasper
175	Reeves	175	Dawson
176	San Jacinto	176	Upshur
177	Camp	177	Crosby
178	Callahan	178	Anderson
179	McCulloch	179	Camp
180	Montague	180	Jones
181	Ector	181	Atascosa
182	Angelina	182	Frio
183	Cherokee	183	Robertson
184	Lamar	184	Lamb
185	Hill	185	Cass
186	Floyd	186	Milam

Rank	Health Outcomes	Rank	Health Factors
187	Falls	187	Grimes
188	Fannin	188	Ector
189	Baylor	189	Edwards
190	Jefferson	190	Morris
191	Lynn	191	Houston
192	Trinity	192	Potter
193	Brown	193	Cochran
194	Bowie	194	Tyler
195	Young	195	Duval
196	Anderson	196	Palo Pinto
197	Hall	197	Hall
198	Winkler	198	Howard
199	Liberty	199	Hunt
200	Lamb	200	Navarro
201	Gray	201	Matagorda
202	Martin	202	Presidio
203	Eastland	203	Shelby
204	Jim Wells	204	Pecos
205	Marion	205	Uvalde
206	Nolan	206	Orange
207	Ward	207	Polk
208	Sabine	208	Terry
209	Potter	209	San Jacinto
210	Menard	210	Jefferson
211	Howard	211	Falls
212	Coleman	212	Cameron
213	Jasper	213	Dimmit
214	Houston	214	Webb
215	Morris	215	Cherokee
216	Coke	216	Zapata
217	Aransas	217	Reeves
218	Terry	218	Newton
219	Orange	219	Marion
220	Jack	220	Liberty
221	Fisher	221	Limestone
222	Cass	222	Red River
223	Newton	223	San Augustine
224	Cochran	224	Sabine
225	Shelby	225	Hidalgo
226	Hutchinson	226	Trinity
227	Kimble	227	Maverick
228	Brooks	228	Hudspeth
229	Red River	229	Brooks
230	Limestone	230	Willacy
231	Polk	231	Zavala
232	San Augustine	232	Starr

Not Ranked: Armstrong, Borden, Briscoe, Cottle, Culberson, Dickens, Foard, Glasscock, Irion, Kenedy, Kent, King, Loving, McMullen, Motley, Oldham, Roberts, Sherman, Sterling, Stonewall, Terrell, Throckmorton

2014 County Health Rankings: Measures, Data Sources, and Years of Data

	Measure	Data Source	Years of Data
HEALTH OUTCOMES			
Length of Life	Premature death	National Center for Health Statistics	2008-2010
Quality of Life	Poor or fair health	Behavioral Risk Factor Surveillance System	2006-2012
	Poor physical health days	Behavioral Risk Factor Surveillance System	2006-2012
	Poor mental health days	Behavioral Risk Factor Surveillance System	2006-2012
	Low birthweight	National Center for Health Statistics	2005-2011
HEALTH FACTORS			
HEALTH BEHAVIORS			
Tobacco Use	Adult smoking	Behavioral Risk Factor Surveillance System	2006-2012
Diet and Exercise	Adult obesity	National Center for Chronic Disease Prevention and Health Promotion	2010
	Food environment index	USDA Food Environment Atlas, Map the Meal Gap	2010-2011
	Physical inactivity	National Center for Chronic Disease Prevention and Health Promotion	2010
	Access to exercise opportunities	OneSource Global Business Browser, Delorme map data, ESRI, & US Census Tigerline Files	2010 & 2012
Alcohol and Drug Use	Excessive drinking	Behavioral Risk Factor Surveillance System	2006-2012
	Alcohol-impaired driving deaths	Fatality Analysis Reporting System	2008-2012
Sexual Activity	Sexually transmitted infections	National Center for HIV/AIDS, Viral Hepatitis, STD, and TB prevention	2011
	Teen births	National Center for Health Statistics	2005-2011
CLINICAL CARE			
Access to Care	Uninsured	Small Area Health Insurance Estimates	2011
	Primary care physicians	HRSA Area Resource File	2011
	Dentists	HRSA Area Resource File	2012
	Mental health providers	CMS, National Provider Identification	2013
Quality of Care	Preventable hospital stays	Medicare/Dartmouth Institute	2011
	Diabetic screening	Medicare/Dartmouth Institute	2011
	Mammography screening	Medicare/Dartmouth Institute	2011
SOCIAL AND ECONOMIC FACTORS			
Education	High school graduation	data.gov, supplemented with National Center for Education Statistics	2010-2011
	Some college	American Community Survey	2008-2012
Employment	Unemployment	Bureau of Labor Statistics	2012
Income	Children in poverty	Small Area Income and Poverty Estimates	2012
Family and Social Support	Inadequate social support	Behavioral Risk Factor Surveillance System	2005-2010
	Children in single-parent households	American Community Survey	2008-2012
Community Safety	Violent crime	Uniform Crime Reporting - FBI	2009-2011
	Injury deaths	CDC WONDER	2006-2010
PHYSICAL ENVIRONMENT			
Air and Water Quality	Air pollution - particulate matter ¹	CDC WONDER	2011
	Drinking water violations	Safe Drinking Water Information System	FY 2012-2013
Housing and Transit	Severe housing problems	HUD, Comprehensive Housing Affordability Strategy	2006-2010
	Driving alone to work	American Community Survey	2008-2012
	Long commute – driving alone	American Community Survey	2008-2012

¹ Not available for AK and HI.

CREDITS

Report Authors

University of Wisconsin-Madison
School of Medicine and Public Health
Department of Population Health Sciences
Population Health Institute

Bridget Catlin, PhD, MHSA
Amanda Jovaag, MS
Julie Willems Van Dijk, PhD, RN
Patrick Remington, MD, MPH

This publication would not have been possible without the following contributions:

Data

Centers for Disease Control and Prevention: National Center for Health Statistics and Division of Behavioral Surveillance
Dartmouth Institute for Health Policy & Clinical Practice

Research Assistance

Jennifer Buechner
Hyojun Park, MA
Elizabeth Pollock
Jennifer Robinson
Matthew Rodock, MPH
Anne Roubal, MS

Communications and Outreach

Burness Communications
Alison Bergum, MPA
Matthew Call
Kate Konkle, MPH
Kitty Jerome, MA
Karen Odegaard, MPH
Jan O'Neill, MPA

Design

Forum One, Alexandria, VA

Robert Wood Johnson Foundation

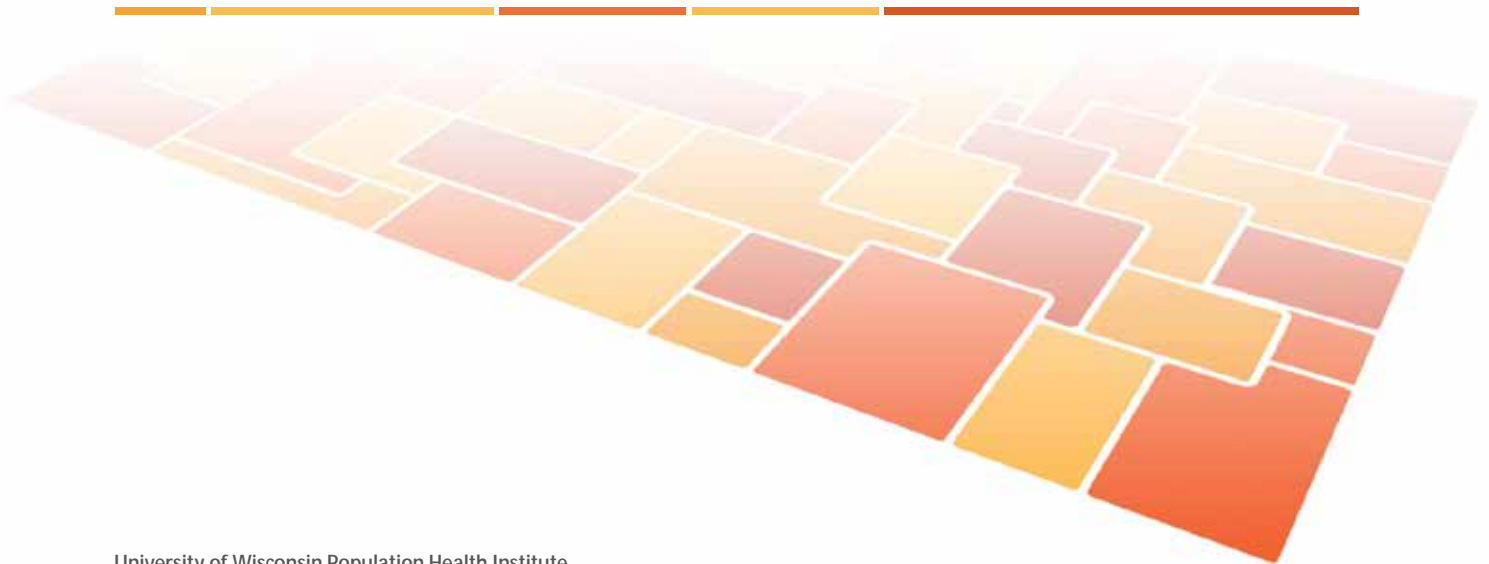
Abbey Cofsky, MPH – Senior Program Officer
Michelle Larkin, JD, MS, RN – Assistant Vice-President, Program Portfolios
Marjorie Paloma, MPH – Senior Policy Advisor
James S. Marks, MD, MPH – Senior Vice-President and Director, Program Portfolios
Joe Marx – Senior Communications Officer

Suggested citation: University of Wisconsin Population Health Institute. *County Health Rankings 2014*.

County Health Rankings & Roadmaps

Building a Culture of Health, County by County

countyhealthrankings.org



University of Wisconsin Population Health Institute
610 Walnut St, #524, Madison, WI 53726
(608) 265-8240 / info@countyhealthrankings.org

