

**County Health
Rankings & Roadmaps**

Building a Culture of Health, County by County

A Robert Wood Johnson Foundation program

2014 *Rankings* South Dakota



A collaboration between the Robert Wood Johnson Foundation and the University of Wisconsin Population Health Institute.



Support provided by

Robert Wood Johnson Foundation



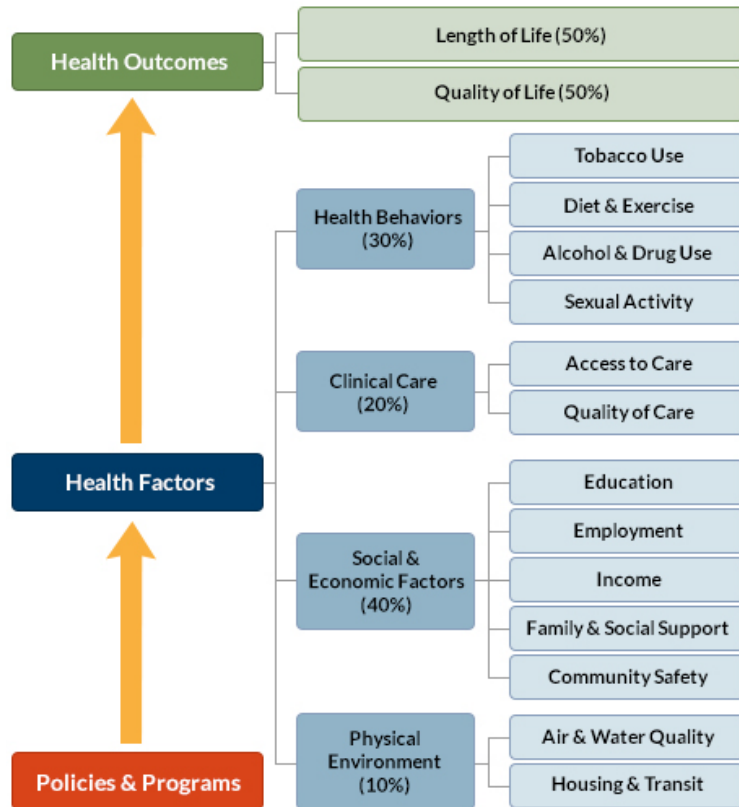
INSIDE FRONT COVER – INTENTIONALLY BLANK

INTRODUCTION

The *County Health Rankings & Roadmaps* program helps communities identify and implement solutions that make it easier for people to be healthy in their schools, workplaces, and neighborhoods. Ranking the health of nearly every county in the nation, the *County Health Rankings* illustrate *what we know* when it comes to what is making people sick or healthy. The *Roadmaps* show *what we can do* to create healthier places to live, learn, work, and play. The Robert Wood Johnson Foundation (RWJF) collaborates with the University of Wisconsin Population Health Institute (UWPHI) to bring this program to cities, counties, and states across the nation.

WHAT ARE THE COUNTY HEALTH RANKINGS?

The *County Health Rankings* measure the health of nearly every county in the nation. Published online at countyhealthrankings.org, the *Rankings* help counties understand what influences how healthy residents are and how long they will live. The *Rankings* look at a variety of measures that affect health, such as high school graduation rates, access to healthy foods, rates of smoking, obesity, and teen births. Based on data available for each county, the *Rankings* are unique in their ability to measure the overall health of each county in all 50 states. They have been used to garner support for local health improvement initiatives among government agencies, healthcare providers, community organizations, business leaders, policy makers, and the public.



HOW ARE PEOPLE USING THE RANKINGS?

- Ø Highlighting community success
- Ø Identifying root causes of poor health
- Ø Supporting policy change
- Ø Engaging communities in health improvement

For more information, visit countyhealthrankings.org

WHAT ARE THE ROADMAPS TO HEALTH?

The *Roadmaps to Health* help communities bring people together to look at the many factors that influence health, select strategies that work, and make changes that will have a lasting impact. The *Roadmaps* focus on helping communities determine what they can do and what they can learn from others.

What You Can Do

The *Roadmaps to Health* Action Center provides step-by-step guides, tools, and webinars to help groups working to improve the health of their communities. Community Coaches also provide customized consultation to local communities that have demonstrated a willingness to address factors that we know influence health, such as education, income, and community safety.

The Action Center also features *What Works for Health* – a searchable database of evidence-informed policies and programs that can improve health.

Learning From Others

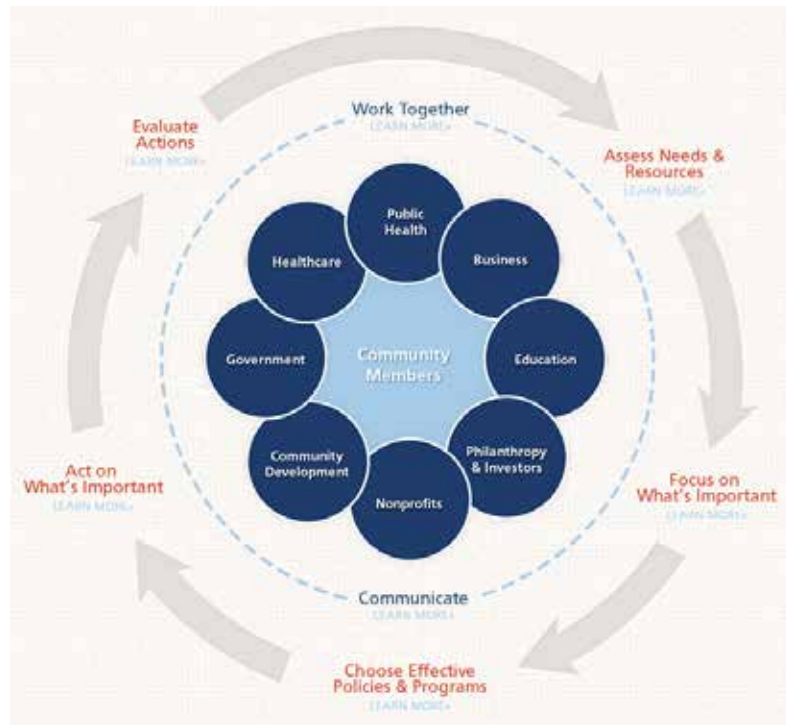
Honoring the efforts of communities working at the forefront of health improvement, the Robert Wood

Johnson Foundation annually awards the *RWJF Culture of Health Prize* to outstanding communities that are working toward better health. The *Prize* recognizes communities with strong and diverse partnerships that are coming together with a shared vision and commitment to address multiple factors that affect health and make lasting changes that create a culture of health for all. Visit countyhealthrankings.org or rwjf.org/prize to learn about the work of past prize winners.

At countyhealthrankings.org, we also feature stories from communities across the nation who have used data from the *County Health Rankings* or have engaged in strategies to improve health. For example, you can learn from the successes and challenges of the 30 *Roadmaps to Health* Community Grantees. These grantees are working to create positive policy or systems changes that address social and economic factors that influence how healthy people are and how long they live, such as education and community safety. You might also want to contact your local affiliate of United Way Worldwide, the National Business Coalition on Health, or the National Association of Counties - their national parent organizations have partnered with us to raise awareness and stimulate action to improve health in their local members' communities.

How can you get involved?

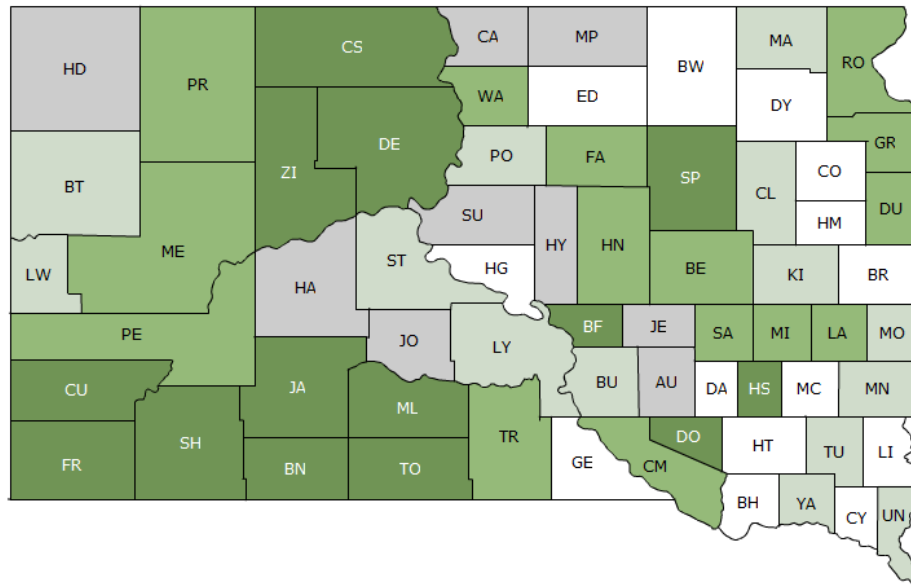
In communities large and small, people from all walks of life are taking ownership and action to improve health. Visit countyhealthrankings.org to get ideas and guidance on how you can take action in your community. Working with others, you can improve the health of your community.



The green map below shows the distribution of South Dakota's **health outcomes**, based on an equal weighting of length and quality of life.

Lighter colors indicate better performance in the respective summary rankings. Detailed information on the underlying measures is available on our web site.

HEALTH OUTCOMES RANKS



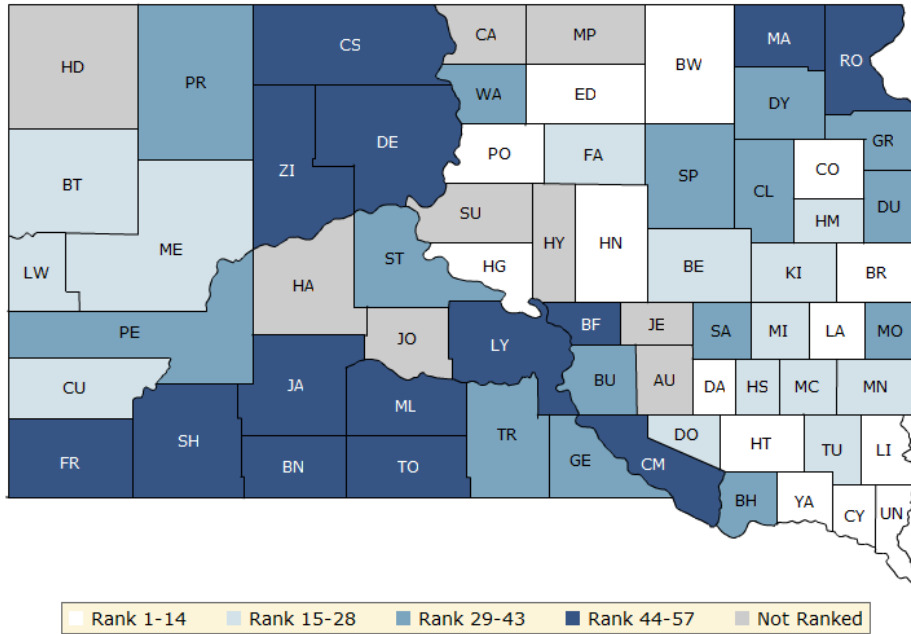
Rank 1-14 Rank 15-28 Rank 29-43 Rank 44-57 Not Ranked

County	Rank	County	Rank	County	Rank	County	Rank
Aurora	NR	Day	9	Jackson	52	Perkins	30
Beadle	41	Deuel	37	Jerauld	NR	Potter	22
Bennett	51	Dewey	53	Jones	NR	Roberts	40
Bon Homme	5	Douglas	44	Kingsbury	21	Sanborn	35
Brookings	2	Edmunds	7	Lake	31	Shannon	56
Brown	14	Fall River	49	Lawrence	27	Spink	46
Brule	19	Faulk	34	Lincoln	3	Stanley	26
Buffalo	57	Grant	39	Lyman	25	Sully	NR
Butte	17	Gregory	13	Marshall	18	Todd	55
Campbell	NR	Haakon	NR	McCook	11	Tripp	43
Charles Mix	29	Hamlin	4	McPherson	NR	Turner	16
Clark	23	Hand	36	Meade	32	Union	15
Clay	6	Hanson	48	Mellette	50	Walworth	42
Codington	10	Harding	NR	Miner	33	Yankton	20
Corson	54	Hughes	8	Minnehaha	24	Ziebach	47
Custer	45	Hutchinson	1	Moody	28		
Davison	12	Hyde	NR	Pennington	38		

The blue map displays South Dakota’s summary ranks for **health factors**, based on weighted scores for health behaviors, clinical care, social and economic factors, and the physical environment.

Lighter colors indicate better performance in the respective summary rankings. Detailed information on the underlying measures is available on our web site.

HEALTH FACTORS RANKS



County	Rank	County	Rank	County	Rank	County	Rank
Aurora	NR	Day	43	Jackson	49	Perkins	33
Beadle	27	Deuel	39	Jerauld	NR	Potter	10
Bennett	51	Dewey	54	Jones	NR	Roberts	47
Bon Homme	36	Douglas	19	Kingsbury	15	Sanborn	37
Brookings	3	Edmunds	7	Lake	14	Shannon	57
Brown	9	Fall River	44	Lawrence	17	Spink	31
Brule	32	Faulk	25	Lincoln	1	Stanley	34
Buffalo	56	Grant	35	Lyman	48	Sully	NR
Butte	28	Gregory	40	Marshall	45	Todd	55
Campbell	NR	Haakon	NR	McCook	24	Tripp	41
Charles Mix	46	Hamlin	26	McPherson	NR	Turner	23
Clark	38	Hand	8	Meade	18	Union	2
Clay	12	Hanson	16	Mellette	50	Walworth	30
Codington	13	Harding	NR	Miner	22	Yankton	11
Corson	53	Hughes	4	Minnehaha	21	Ziebach	52
Custer	20	Hutchinson	6	Moody	42		
Davison	5	Hyde	NR	Pennington	29		

Summary Health Outcomes & Health Factors Rankings

Counties receive two ranks:

- Health Outcomes
- Health Factors

Each of these ranks represents a weighted summary of a number of measures.

Health outcomes represent how healthy a county is while health factors represent what influences the health of the county.

Rank	Health Outcomes	Rank	Health Factors
1	Hutchinson	1	Lincoln
2	Brookings	2	Union
3	Lincoln	3	Brookings
4	Hamlin	4	Hughes
5	Bon Homme	5	Davison
6	Clay	6	Hutchinson
7	Edmunds	7	Edmunds
8	Hughes	8	Hand
9	Day	9	Brown
10	Codington	10	Potter
11	McCook	11	Yankton
12	Davison	12	Clay
13	Gregory	13	Codington
14	Brown	14	Lake
15	Union	15	Kingsbury
16	Turner	16	Hanson
17	Butte	17	Lawrence
18	Marshall	18	Meade
19	Brule	19	Douglas
20	Yankton	20	Custer
21	Kingsbury	21	Minnehaha
22	Potter	22	Miner
23	Clark	23	Turner
24	Minnehaha	24	McCook
25	Lyman	25	Faulk
26	Stanley	26	Hamlin
27	Lawrence	27	Beadle
28	Moody	28	Butte
29	Charles Mix	29	Pennington
30	Perkins	30	Walworth
31	Lake	31	Spink
32	Meade	32	Brule
33	Miner	33	Perkins
34	Faulk	34	Stanley
35	Sanborn	35	Grant
36	Hand	36	Bon Homme
37	Deuel	37	Sanborn
38	Pennington	38	Clark
39	Grant	39	Deuel
40	Roberts	40	Gregory

Rank	Health Outcomes	Rank	Health Factors
41	Beadle	41	Tripp
42	Walworth	42	Moody
43	Tripp	43	Day
44	Douglas	44	Fall River
45	Custer	45	Marshall
46	Spink	46	Charles Mix
47	Ziebach	47	Roberts
48	Hanson	48	Lyman
49	Fall River	49	Jackson
50	Mellette	50	Mellette
51	Bennett	51	Bennett
52	Jackson	52	Ziebach
53	Dewey	53	Corson
54	Corson	54	Dewey
55	Todd	55	Todd
56	Shannon	56	Buffalo
57	Buffalo	57	Shannon

Not Ranked: Aurora, Campbell, Haakon, Harding, Hyde, Jerauld, Jones, McPherson, Sully

2014 County Health Rankings: Measures, Data Sources, and Years of Data

	Measure	Data Source	Years of Data
HEALTH OUTCOMES			
Length of Life	Premature death	National Center for Health Statistics	2008-2010
Quality of Life	Poor or fair health	Behavioral Risk Factor Surveillance System	2006-2012
	Poor physical health days	Behavioral Risk Factor Surveillance System	2006-2012
	Poor mental health days	Behavioral Risk Factor Surveillance System	2006-2012
	Low birthweight	National Center for Health Statistics	2005-2011
HEALTH FACTORS			
HEALTH BEHAVIORS			
Tobacco Use	Adult smoking	Behavioral Risk Factor Surveillance System	2006-2012
Diet and Exercise	Adult obesity	National Center for Chronic Disease Prevention and Health Promotion	2010
	Food environment index	USDA Food Environment Atlas, Map the Meal Gap	2010-2011
	Physical inactivity	National Center for Chronic Disease Prevention and Health Promotion	2010
	Access to exercise opportunities	OneSource Global Business Browser, Delorme map data, ESRI, & US Census Tigerline Files	2010 & 2012
Alcohol and Drug Use	Excessive drinking	Behavioral Risk Factor Surveillance System	2006-2012
	Alcohol-impaired driving deaths	Fatality Analysis Reporting System	2008-2012
Sexual Activity	Sexually transmitted infections	National Center for HIV/AIDS, Viral Hepatitis, STD, and TB prevention	2011
	Teen births	National Center for Health Statistics	2005-2011
CLINICAL CARE			
Access to Care	Uninsured	Small Area Health Insurance Estimates	2011
	Primary care physicians	HRSA Area Resource File	2011
	Dentists	HRSA Area Resource File	2012
	Mental health providers	CMS, National Provider Identification	2013
Quality of Care	Preventable hospital stays	Medicare/Dartmouth Institute	2011
	Diabetic screening	Medicare/Dartmouth Institute	2011
	Mammography screening	Medicare/Dartmouth Institute	2011
SOCIAL AND ECONOMIC FACTORS			
Education	High school graduation	data.gov, supplemented with National Center for Education Statistics	2010-2011
	Some college	American Community Survey	2008-2012
Employment	Unemployment	Bureau of Labor Statistics	2012
Income	Children in poverty	Small Area Income and Poverty Estimates	2012
Family and Social Support	Inadequate social support	Behavioral Risk Factor Surveillance System	2005-2010
	Children in single-parent households	American Community Survey	2008-2012
Community Safety	Violent crime	Uniform Crime Reporting - FBI	2009-2011
	Injury deaths	CDC WONDER	2006-2010
PHYSICAL ENVIRONMENT			
Air and Water Quality	Air pollution - particulate matter ¹	CDC WONDER	2011
	Drinking water violations	Safe Drinking Water Information System	FY 2012-2013
Housing and Transit	Severe housing problems	HUD, Comprehensive Housing Affordability Strategy	2006-2010
	Driving alone to work	American Community Survey	2008-2012
	Long commute – driving alone	American Community Survey	2008-2012

¹ Not available for AK and HI.

CREDITS

Report Authors

University of Wisconsin-Madison
School of Medicine and Public Health
Department of Population Health Sciences
Population Health Institute

Bridget Catlin, PhD, MHSA
Amanda Jovaag, MS
Julie Willems Van Dijk, PhD, RN
Patrick Remington, MD, MPH

This publication would not have been possible without the following contributions:

Data

Centers for Disease Control and Prevention: National Center for Health Statistics and Division of Behavioral Surveillance
Dartmouth Institute for Health Policy & Clinical Practice

Research Assistance

Jennifer Buechner
Hyojun Park, MA
Elizabeth Pollock
Jennifer Robinson
Matthew Rodock, MPH
Anne Roubal, MS

Communications and Outreach

Burness Communications
Alison Bergum, MPA
Matthew Call
Kate Konkle, MPH
Kitty Jerome, MA
Karen Odegaard, MPH
Jan O'Neill, MPA

Design

Forum One, Alexandria, VA

Robert Wood Johnson Foundation

Abbey Cofsky, MPH – Senior Program Officer
Michelle Larkin, JD, MS, RN – Assistant Vice-President, Program Portfolios
Marjorie Paloma, MPH – Senior Policy Advisor
James S. Marks, MD, MPH – Senior Vice-President and Director, Program Portfolios
Joe Marx – Senior Communications Officer

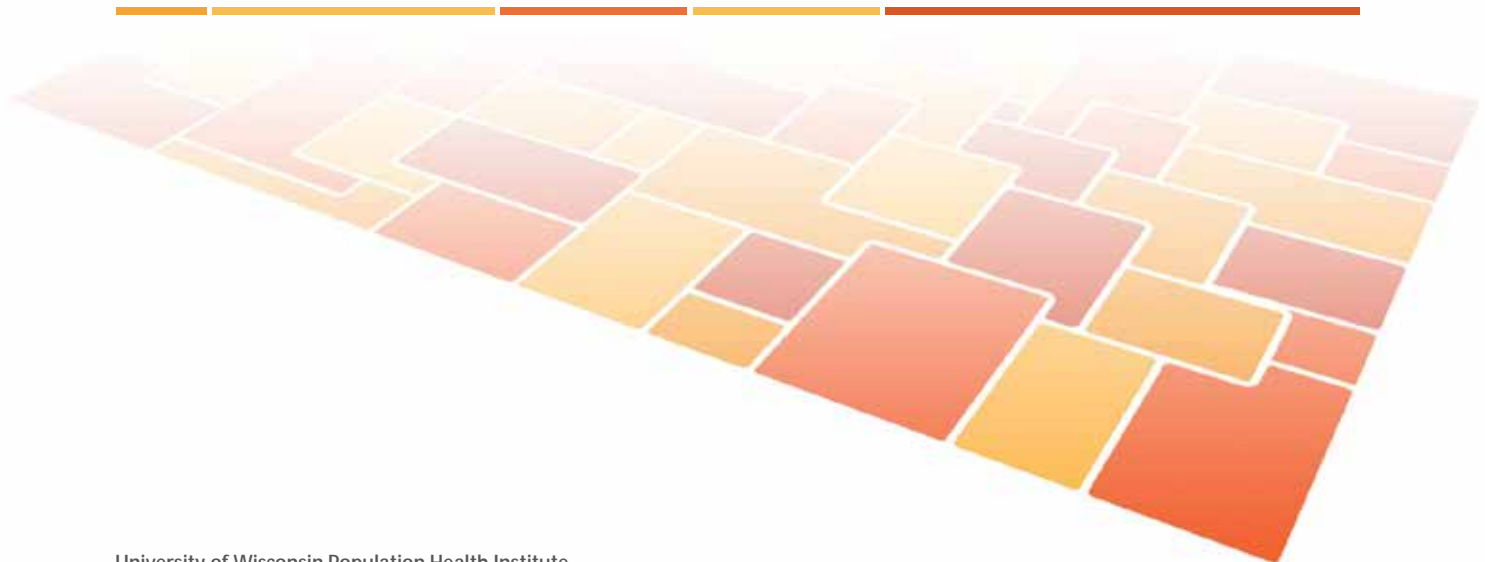
Suggested citation: University of Wisconsin Population Health Institute. *County Health Rankings 2014*.

INSIDE BACK COVER – INTENTIONALLY BLANK

County Health Rankings & Roadmaps

Building a Culture of Health, County by County

countyhealthrankings.org



University of Wisconsin Population Health Institute
610 Walnut St, #524, Madison, WI 53726
(608) 265-8240 / info@countyhealthrankings.org

