

**County Health  
Rankings & Roadmaps**

Building a Culture of Health, County by County

A Robert Wood Johnson Foundation program

# 2014 *Rankings* Missouri



A collaboration between the Robert Wood Johnson Foundation and the University of Wisconsin Population Health Institute.



Support provided by

Robert Wood Johnson Foundation



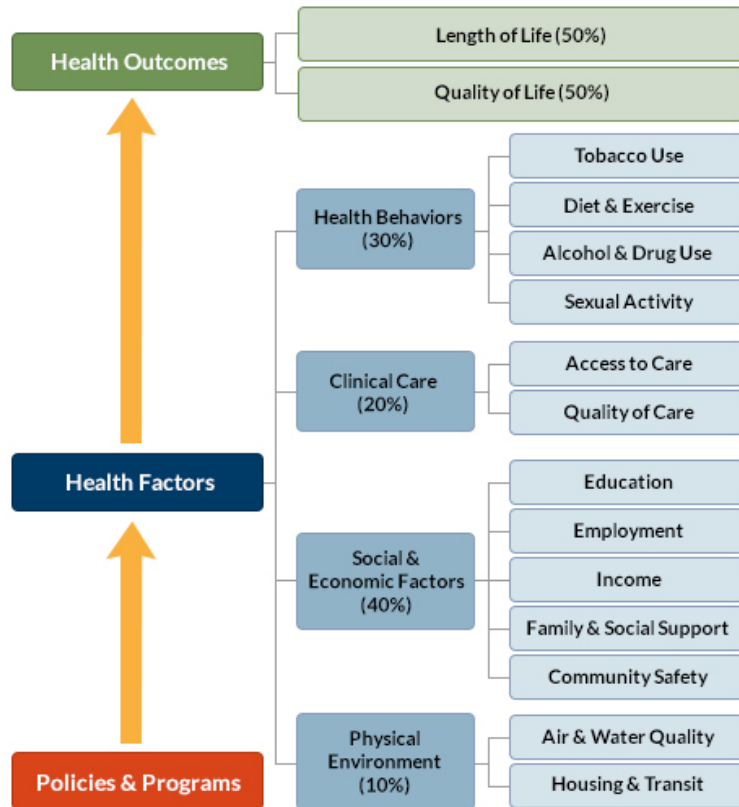
INSIDE FRONT COVER – INTENTIONALLY BLANK

## INTRODUCTION

The *County Health Rankings & Roadmaps* program helps communities identify and implement solutions that make it easier for people to be healthy in their schools, workplaces, and neighborhoods. Ranking the health of nearly every county in the nation, the *County Health Rankings* illustrate *what we know* when it comes to what is making people sick or healthy. The *Roadmaps* show *what we can do* to create healthier places to live, learn, work, and play. The Robert Wood Johnson Foundation (RWJF) collaborates with the University of Wisconsin Population Health Institute (UWPHI) to bring this program to cities, counties, and states across the nation.

## WHAT ARE THE COUNTY HEALTH RANKINGS?

The *County Health Rankings* measure the health of nearly every county in the nation. Published online at [countyhealthrankings.org](http://countyhealthrankings.org), the *Rankings* help counties understand what influences how healthy residents are and how long they will live. The *Rankings* look at a variety of measures that affect health, such as high school graduation rates, access to healthy foods, rates of smoking, obesity, and teen births. Based on data available for each county, the *Rankings* are unique in their ability to measure the overall health of each county in all 50 states. They have been used to garner support for local health improvement initiatives among government agencies, healthcare providers, community organizations, business leaders, policy makers, and the public.



## HOW ARE PEOPLE USING THE RANKINGS?

- Ø Highlighting community success
- Ø Identifying root causes of poor health
- Ø Supporting policy change
- Ø Engaging communities in health improvement

For more information, visit [countyhealthrankings.org](http://countyhealthrankings.org)

## WHAT ARE THE ROADMAPS TO HEALTH?

The *Roadmaps to Health* help communities bring people together to look at the many factors that influence health, select strategies that work, and make changes that will have a lasting impact. The *Roadmaps* focus on helping communities determine what they can do and what they can learn from others.

### What You Can Do

The *Roadmaps to Health* Action Center provides step-by-step guides, tools, and webinars to help groups working to improve the health of their communities. Community Coaches also provide customized consultation to local communities that have demonstrated a willingness to address factors that we know influence health, such as education, income, and community safety.

The Action Center also features *What Works for Health* – a searchable database of evidence-informed policies and programs that can improve health.

### Learning From Others

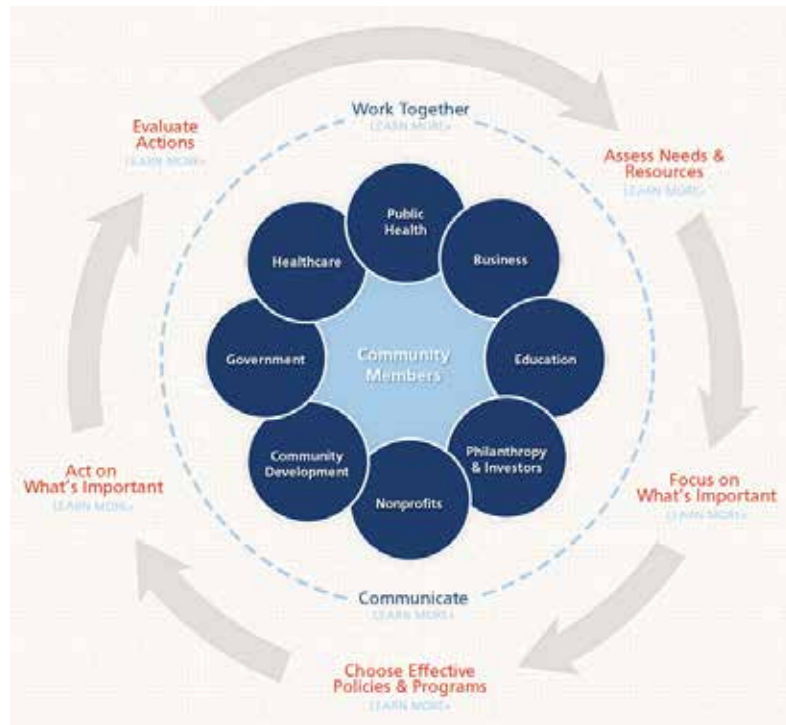
Honoring the efforts of communities working at the forefront of health improvement, the Robert Wood

Johnson Foundation annually awards the *RWJF Culture of Health Prize* to outstanding communities that are working toward better health. The *Prize* recognizes communities with strong and diverse partnerships that are coming together with a shared vision and commitment to address multiple factors that affect health and make lasting changes that create a culture of health for all. Visit [countyhealthrankings.org](http://countyhealthrankings.org) or [rwjf.org/prize](http://rwjf.org/prize) to learn about the work of past prize winners.

At [countyhealthrankings.org](http://countyhealthrankings.org), we also feature stories from communities across the nation who have used data from the *County Health Rankings* or have engaged in strategies to improve health. For example, you can learn from the successes and challenges of the 30 *Roadmaps to Health* Community Grantees. These grantees are working to create positive policy or systems changes that address social and economic factors that influence how healthy people are and how long they live, such as education and community safety. You might also want to contact your local affiliate of United Way Worldwide, the National Business Coalition on Health, or the National Association of Counties - their national parent organizations have partnered with us to raise awareness and stimulate action to improve health in their local members' communities.

## How can you get involved?

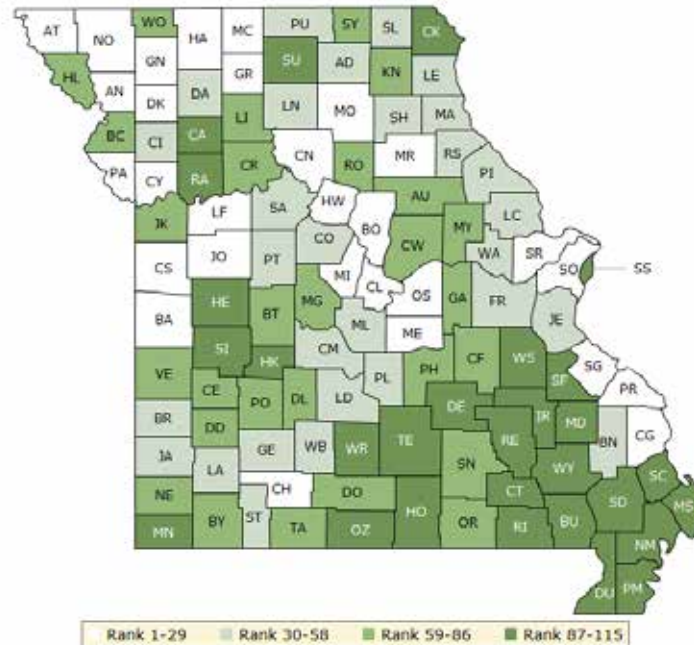
In communities large and small, people from all walks of life are taking ownership and action to improve health. Visit [countyhealthrankings.org](http://countyhealthrankings.org) to get ideas and guidance on how you can take action in your community. Working with others, you can improve the health of your community.



The green map below shows the distribution of Missouri's **health outcomes**, based on an equal weighting of length and quality of life.

Lighter colors indicate better performance in the respective summary rankings. Detailed information on the underlying measures is available on our web site.

### HEALTH OUTCOMES RANKS



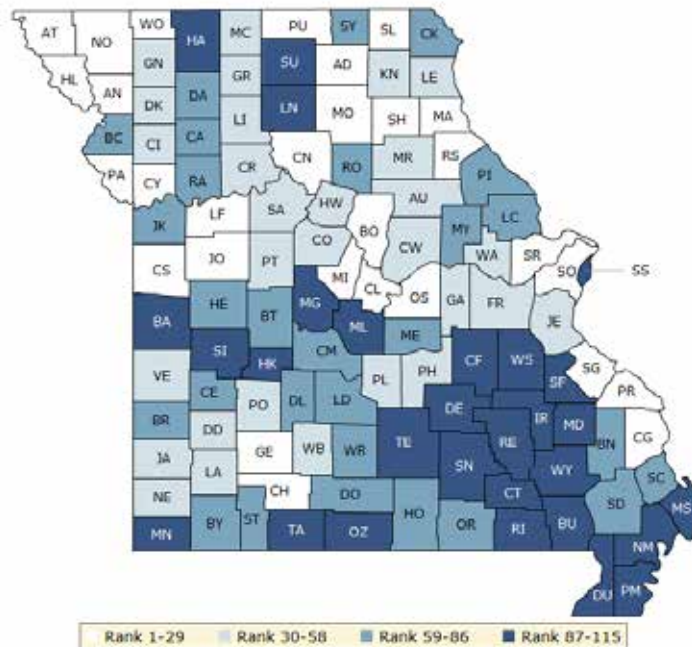
County	Rank	County	Rank	County	Rank	County	Rank
Adair	42	Dallas	59	Livingston	63	Randolph	71
Andrew	2	Daviess	33	Macon	22	Ray	92
Atchison	13	DeKalb	11	Madison	103	Reynolds	99
Audrain	68	Dent	110	Maries	7	Ripley	112
Barry	85	Douglas	76	Marion	50	Saline	31
Barton	48	Dunklin	115	McDonald	97	Schuyler	73
Bates	25	Franklin	57	Mercer	29	Scotland	41
Benton	79	Gasconade	81	Miller	49	Scott	89
Bollinger	36	Gentry	26	Mississippi	109	Shannon	84
Boone	8	Greene	40	Moniteau	16	Shelby	58
Buchanan	65	Grundy	27	Monroe	23	St. Charles	3
Butler	107	Harrison	28	Montgomery	86	St. Clair	105
Caldwell	95	Henry	88	Morgan	80	St. Francois	96
Callaway	74	Hickory	102	New Madrid	111	St. Louis	20
Camden	43	Holt	67	Newton	64	St. Louis City	108
Cape Girardeau	24	Howard	9	Nodaway	1	Ste. Genevieve	18
Carroll	72	Howell	90	Oregon	78	Stoddard	91
Carter	113	Iron	101	Osage	14	Stone	47
Cass	15	Jackson	75	Ozark	106	Sullivan	94
Cedar	82	Jasper	51	Pemiscot	114	Taney	62
Chariton	19	Jefferson	34	Perry	21	Texas	98
Christian	5	Johnson	6	Pettis	55	Vernon	69
Clark	93	Knox	60	Phelps	66	Warren	37
Clay	12	Laclede	52	Pike	39	Washington	104
Clinton	30	Lafayette	10	Platte	4	Wayne	100
Cole	17	Lawrence	53	Polk	61	Webster	56

County	Rank	County	Rank	County	Rank	County	Rank
Cooper	46	Lewis	32	Pulaski	35	Worth	77
Crawford	83	Lincoln	54	Putnam	44	Wright	87
Dade	70	Linn	38	Ralls	45		

The blue map displays Missouri's summary ranks for **health factors**, based on weighted scores for health behaviors, clinical care, social and economic factors, and the physical environment.

Lighter colors indicate better performance in the respective summary rankings. Detailed information on the underlying measures is available on our web site.

### HEALTH FACTORS RANKS



County	Rank	County	Rank	County	Rank	County	Rank
Adair	23	Dallas	86	Livingston	31	Randolph	68
Andrew	10	Daviess	62	Macon	22	Ray	63
Atchison	27	DeKalb	40	Madison	97	Reynolds	106
Audrain	46	Dent	92	Maries	66	Ripley	113
Barry	65	Douglas	83	Marion	19	Saline	57
Barton	73	Dunklin	111	McDonald	107	Schuyler	60
Bates	90	Franklin	43	Mercer	33	Scotland	25
Benton	76	Gasconade	35	Miller	102	Scott	78
Bollinger	77	Gentry	36	Mississippi	108	Shannon	110
Boone	2	Greene	14	Moniteau	29	Shelby	11
Buchanan	59	Grundy	55	Monroe	58	St. Charles	3
Butler	93	Harrison	88	Montgomery	69	St. Clair	94
Caldwell	71	Henry	70	Morgan	98	St. Francois	87
Callaway	42	Hickory	109	New Madrid	105	St. Louis	8
Camden	61	Holt	18	Newton	34	St. Louis City	114
Cape Girardeau	9	Howard	51	Nodaway	5	Ste. Genevieve	26
Carroll	53	Howell	64	Oregon	82	Stoddard	74
Carter	104	Iron	101	Osage	4	Stone	81
Cass	16	Jackson	67	Ozark	99	Sullivan	95
Cedar	75	Jasper	39	Pemiscot	115	Taney	91
Chariton	17	Jefferson	50	Perry	12	Texas	96
Christian	6	Johnson	21	Pettis	56	Vernon	54
Clark	72	Knox	52	Phelps	32	Warren	44
Clay	7	Laclede	84	Pike	85	Washington	112
Clinton	30	Lafayette	20	Platte	1	Wayne	103
Cole	13	Lawrence	48	Polk	38	Webster	41

County	Rank	County	Rank	County	Rank	County	Rank
Cooper	37	Lewis	49	Pulaski	47	Worth	24
Crawford	100	Lincoln	80	Putnam	28	Wright	79
Dade	45	Linn	89	Ralls	15		



## Summary Health Outcomes & Health Factors Rankings

Counties receive two ranks:

- Health Outcomes
- Health Factors

Each of these ranks represents a weighted summary of a number of measures.

Health outcomes represent how healthy a county is while health factors represent what influences the health of the county.

Rank	Health Outcomes	Rank	Health Factors
1	Nodaway	1	Platte
2	Andrew	2	Boone
3	St. Charles	3	St. Charles
4	Platte	4	Osage
5	Christian	5	Nodaway
6	Johnson	6	Christian
7	Maries	7	Clay
8	Boone	8	St. Louis
9	Howard	9	Cape Girardeau
10	Lafayette	10	Andrew
11	DeKalb	11	Shelby
12	Clay	12	Perry
13	Atchison	13	Cole
14	Osage	14	Greene
15	Cass	15	Ralls
16	Moniteau	16	Cass
17	Cole	17	Chariton
18	Ste. Genevieve	18	Holt
19	Chariton	19	Marion
20	St. Louis	20	Lafayette
21	Perry	21	Johnson
22	Macon	22	Macon
23	Monroe	23	Adair
24	Cape Girardeau	24	Worth
25	Bates	25	Scotland
26	Gentry	26	Ste. Genevieve
27	Grundy	27	Atchison
28	Harrison	28	Putnam
29	Mercer	29	Moniteau
30	Clinton	30	Clinton
31	Saline	31	Livingston
32	Lewis	32	Phelps
33	Daviess	33	Mercer
34	Jefferson	34	Newton
35	Pulaski	35	Gasconade
36	Bollinger	36	Gentry
37	Warren	37	Cooper
38	Linn	38	Polk
39	Pike	39	Jasper
40	Greene	40	DeKalb

Rank	Health Outcomes	Rank	Health Factors
41	Scotland	41	Webster
42	Adair	42	Callaway
43	Camden	43	Franklin
44	Putnam	44	Warren
45	Ralls	45	Dade
46	Cooper	46	Audrain
47	Stone	47	Pulaski
48	Barton	48	Lawrence
49	Miller	49	Lewis
50	Marion	50	Jefferson
51	Jasper	51	Howard
52	Laclede	52	Knox
53	Lawrence	53	Carroll
54	Lincoln	54	Vernon
55	Pettis	55	Grundy
56	Webster	56	Pettis
57	Franklin	57	Saline
58	Shelby	58	Monroe
59	Dallas	59	Buchanan
60	Knox	60	Schuyler
61	Polk	61	Camden
62	Taney	62	Daviess
63	Livingston	63	Ray
64	Newton	64	Howell
65	Buchanan	65	Barry
66	Phelps	66	Maries
67	Holt	67	Jackson
68	Audrain	68	Randolph
69	Vernon	69	Montgomery
70	Dade	70	Henry
71	Randolph	71	Caldwell
72	Carroll	72	Clark
73	Schuyler	73	Barton
74	Callaway	74	Stoddard
75	Jackson	75	Cedar
76	Douglas	76	Benton
77	Worth	77	Bollinger
78	Oregon	78	Scott
79	Benton	79	Wright
80	Morgan	80	Lincoln
81	Gasconade	81	Stone
82	Cedar	82	Oregon
83	Crawford	83	Douglas
84	Shannon	84	Laclede
85	Barry	85	Pike
86	Montgomery	86	Dallas
87	Wright	87	St. Francois
88	Henry	88	Harrison

Rank	Health Outcomes	Rank	Health Factors
89	Scott	89	Linn
90	Howell	90	Bates
91	Stoddard	91	Taney
92	Ray	92	Dent
93	Clark	93	Butler
94	Sullivan	94	St. Clair
95	Caldwell	95	Sullivan
96	St. Francois	96	Texas
97	McDonald	97	Madison
98	Texas	98	Morgan
99	Reynolds	99	Ozark
100	Wayne	100	Crawford
101	Iron	101	Iron
102	Hickory	102	Miller
103	Madison	103	Wayne
104	Washington	104	Carter
105	St. Clair	105	New Madrid
106	Ozark	106	Reynolds
107	Butler	107	McDonald
108	St. Louis City	108	Mississippi
109	Mississippi	109	Hickory
110	Dent	110	Shannon
111	New Madrid	111	Dunklin
112	Ripley	112	Washington
113	Carter	113	Ripley
114	Pemiscot	114	St. Louis City
115	Dunklin	115	Pemiscot

## 2014 County Health Rankings: Measures, Data Sources, and Years of Data

	Measure	Data Source	Years of Data
<b>HEALTH OUTCOMES</b>			
<b>Length of Life</b>	Premature death	National Center for Health Statistics	2008-2010
<b>Quality of Life</b>	Poor or fair health	Behavioral Risk Factor Surveillance System	2006-2012
	Poor physical health days	Behavioral Risk Factor Surveillance System	2006-2012
	Poor mental health days	Behavioral Risk Factor Surveillance System	2006-2012
	Low birthweight	National Center for Health Statistics	2005-2011
<b>HEALTH FACTORS</b>			
<b>HEALTH BEHAVIORS</b>			
<b>Tobacco Use</b>	Adult smoking	Behavioral Risk Factor Surveillance System	2006-2012
<b>Diet and Exercise</b>	Adult obesity	National Center for Chronic Disease Prevention and Health Promotion	2010
	Food environment index	USDA Food Environment Atlas, Map the Meal Gap	2010-2011
	Physical inactivity	National Center for Chronic Disease Prevention and Health Promotion	2010
	Access to exercise opportunities	OneSource Global Business Browser, Delorme map data, ESRI, & US Census Tigerline Files	2010 & 2012
<b>Alcohol and Drug Use</b>	Excessive drinking	Behavioral Risk Factor Surveillance System	2006-2012
	Alcohol-impaired driving deaths	Fatality Analysis Reporting System	2008-2012
<b>Sexual Activity</b>	Sexually transmitted infections	National Center for HIV/AIDS, Viral Hepatitis, STD, and TB prevention	2011
	Teen births	National Center for Health Statistics	2005-2011
<b>CLINICAL CARE</b>			
<b>Access to Care</b>	Uninsured	Small Area Health Insurance Estimates	2011
	Primary care physicians	HRSA Area Resource File	2011
	Dentists	HRSA Area Resource File	2012
	Mental health providers	CMS, National Provider Identification	2013
<b>Quality of Care</b>	Preventable hospital stays	Medicare/Dartmouth Institute	2011
	Diabetic screening	Medicare/Dartmouth Institute	2011
	Mammography screening	Medicare/Dartmouth Institute	2011
<b>SOCIAL AND ECONOMIC FACTORS</b>			
<b>Education</b>	High school graduation	data.gov, supplemented with National Center for Education Statistics	2010-2011
	Some college	American Community Survey	2008-2012
<b>Employment</b>	Unemployment	Bureau of Labor Statistics	2012
<b>Income</b>	Children in poverty	Small Area Income and Poverty Estimates	2012
<b>Family and Social Support</b>	Inadequate social support	Behavioral Risk Factor Surveillance System	2005-2010
	Children in single-parent households	American Community Survey	2008-2012
<b>Community Safety</b>	Violent crime	Uniform Crime Reporting - FBI	2009-2011
	Injury deaths	CDC WONDER	2006-2010
<b>PHYSICAL ENVIRONMENT</b>			
<b>Air and Water Quality</b>	Air pollution - particulate matter <sup>1</sup>	CDC WONDER	2011
	Drinking water violations	Safe Drinking Water Information System	FY 2012-2013
<b>Housing and Transit</b>	Severe housing problems	HUD, Comprehensive Housing Affordability Strategy	2006-2010
	Driving alone to work	American Community Survey	2008-2012
	Long commute – driving alone	American Community Survey	2008-2012

<sup>1</sup> Not available for AK and HI.

CREDITS

**Report Authors**

University of Wisconsin-Madison  
School of Medicine and Public Health  
Department of Population Health Sciences  
Population Health Institute

Bridget Catlin, PhD, MHSA  
Amanda Jovaag, MS  
Julie Willems Van Dijk, PhD, RN  
Patrick Remington, MD, MPH

This publication would not have been possible without the following contributions:

***Data***

Centers for Disease Control and Prevention: National Center for Health Statistics and Division of Behavioral Surveillance  
Dartmouth Institute for Health Policy & Clinical Practice

***Research Assistance***

Jennifer Buechner  
Hyojun Park, MA  
Elizabeth Pollock  
Jennifer Robinson  
Matthew Rodock, MPH  
Anne Roubal, MS

***Communications and Outreach***

Burness Communications  
Alison Bergum, MPA  
Matthew Call  
Kate Konkle, MPH  
Kitty Jerome, MA  
Karen Odegaard, MPH  
Jan O'Neill, MPA

***Design***

Forum One, Alexandria, VA

***Robert Wood Johnson Foundation***

Abbey Cofsky, MPH – Senior Program Officer  
Michelle Larkin, JD, MS, RN – Assistant Vice-President, Program Portfolios  
Marjorie Paloma, MPH – Senior Policy Advisor  
James S. Marks, MD, MPH – Senior Vice-President and Director, Program Portfolios  
Joe Marx – Senior Communications Officer

Suggested citation: University of Wisconsin Population Health Institute. *County Health Rankings 2014*.

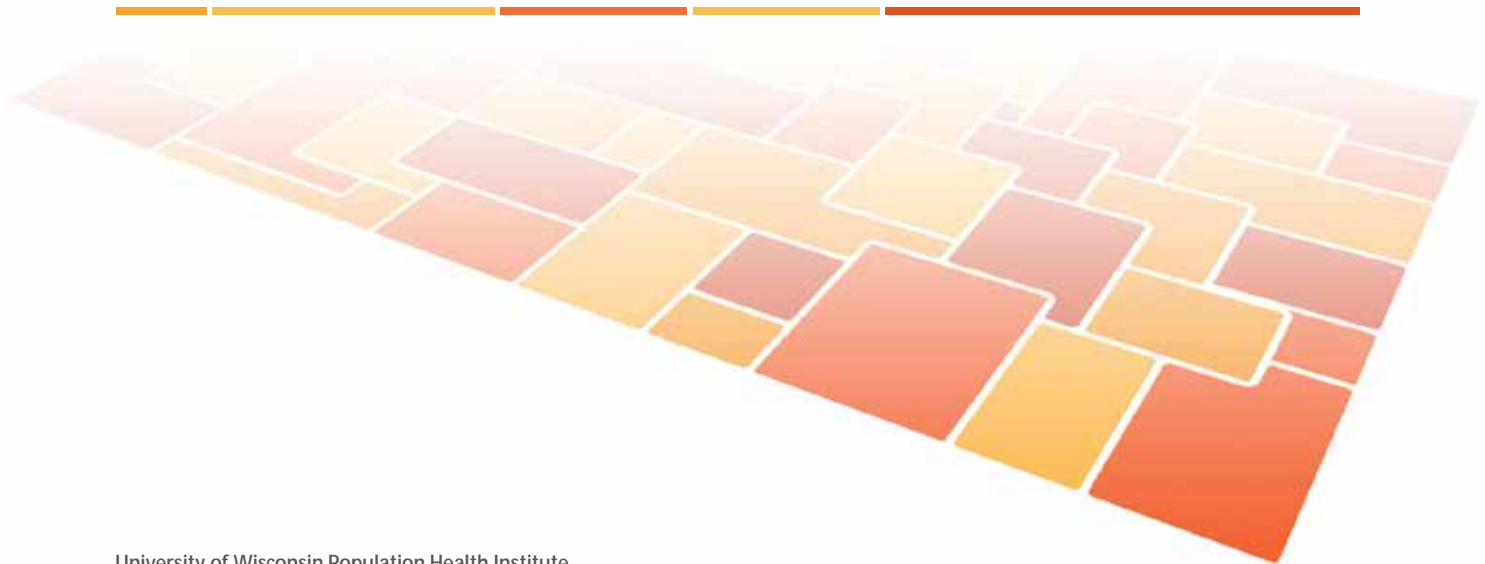


INSIDE BACK COVER – INTENTIONALLY BLANK

# County Health Rankings & Roadmaps

Building a Culture of Health, County by County

[countyhealthrankings.org](http://countyhealthrankings.org)



University of Wisconsin Population Health Institute  
610 Walnut St, #524, Madison, WI 53726  
(608) 265-8240 / [info@countyhealthrankings.org](mailto:info@countyhealthrankings.org)

