

**County Health  
Rankings & Roadmaps**

Building a Culture of Health, County by County

A Robert Wood Johnson Foundation program

2014 *Rankings*  
**Michigan**



A collaboration between the Robert Wood Johnson Foundation and the University of Wisconsin Population Health Institute.



Support provided by

Robert Wood Johnson Foundation



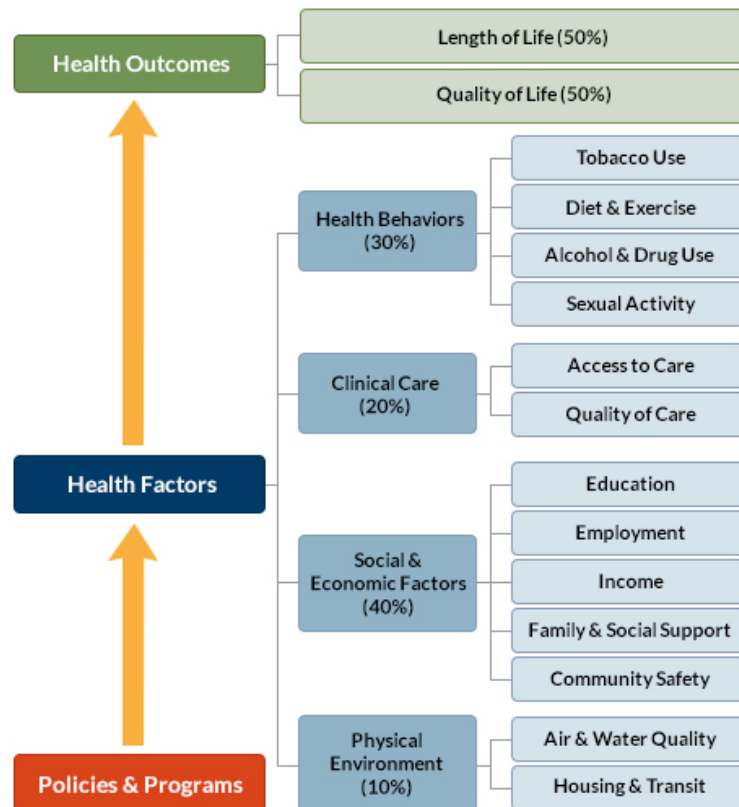
INSIDE FRONT COVER – INTENTIONALLY BLANK

## INTRODUCTION

The *County Health Rankings & Roadmaps* program helps communities identify and implement solutions that make it easier for people to be healthy in their schools, workplaces, and neighborhoods. Ranking the health of nearly every county in the nation, the *County Health Rankings* illustrate *what we know* when it comes to what is making people sick or healthy. The *Roadmaps* show *what we can do* to create healthier places to live, learn, work, and play. The Robert Wood Johnson Foundation (RWJF) collaborates with the University of Wisconsin Population Health Institute (UWPHI) to bring this program to cities, counties, and states across the nation.

## WHAT ARE THE COUNTY HEALTH RANKINGS?

The *County Health Rankings* measure the health of nearly every county in the nation. Published online at [countyhealthrankings.org](http://countyhealthrankings.org), the *Rankings* help counties understand what influences how healthy residents are and how long they will live. The *Rankings* look at a variety of measures that affect health, such as high school graduation rates, access to healthy foods, rates of smoking, obesity, and teen births. Based on data available for each county, the *Rankings* are unique in their ability to measure the overall health of each county in all 50 states. They have been used to garner support for local health improvement initiatives among government agencies, healthcare providers, community organizations, business leaders, policy makers, and the public.



## HOW ARE PEOPLE USING THE RANKINGS?

- Ø Highlighting community success
- Ø Identifying root causes of poor health
- Ø Supporting policy change
- Ø Engaging communities in health improvement

For more information, visit [countyhealthrankings.org](http://countyhealthrankings.org)

## WHAT ARE THE ROADMAPS TO HEALTH?

The *Roadmaps to Health* help communities bring people together to look at the many factors that influence health, select strategies that work, and make changes that will have a lasting impact. The *Roadmaps* focus on helping communities determine what they can do and what they can learn from others.

### What You Can Do

The *Roadmaps to Health* Action Center provides step-by-step guides, tools, and webinars to help groups working to improve the health of their communities. Community Coaches also provide customized consultation to local communities that have demonstrated a willingness to address factors that we know influence health, such as education, income, and community safety.

The Action Center also features *What Works for Health* – a searchable database of evidence-informed policies and programs that can improve health.

### Learning From Others

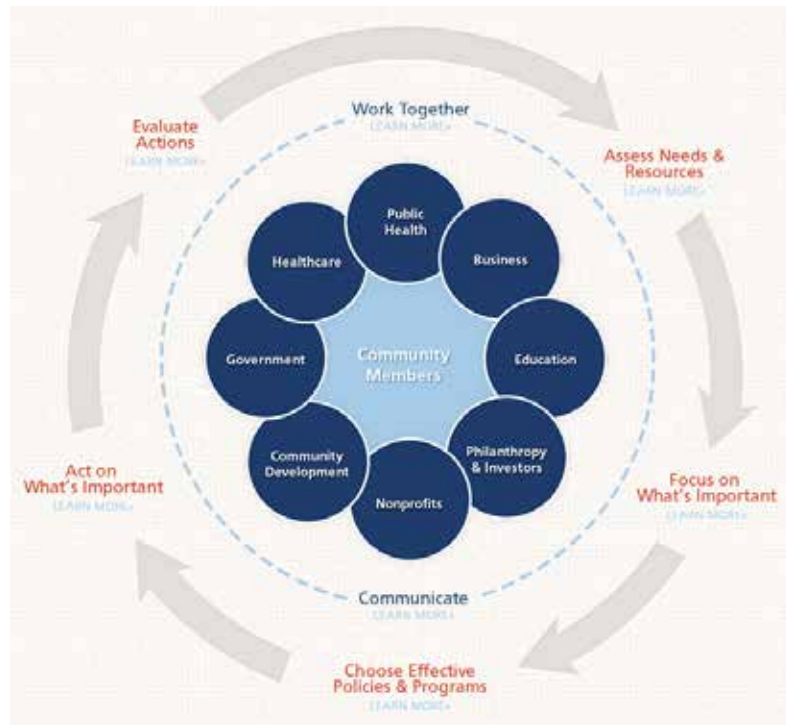
Honoring the efforts of communities working at the forefront of health improvement, the Robert Wood

Johnson Foundation annually awards the *RWJF Culture of Health Prize* to outstanding communities that are working toward better health. The *Prize* recognizes communities with strong and diverse partnerships that are coming together with a shared vision and commitment to address multiple factors that affect health and make lasting changes that create a culture of health for all. Visit [countyhealthrankings.org](http://countyhealthrankings.org) or [rwjf.org/prize](http://rwjf.org/prize) to learn about the work of past prize winners.

At [countyhealthrankings.org](http://countyhealthrankings.org), we also feature stories from communities across the nation who have used data from the *County Health Rankings* or have engaged in strategies to improve health. For example, you can learn from the successes and challenges of the 30 *Roadmaps to Health* Community Grantees. These grantees are working to create positive policy or systems changes that address social and economic factors that influence how healthy people are and how long they live, such as education and community safety. You might also want to contact your local affiliate of United Way Worldwide, the National Business Coalition on Health, or the National Association of Counties - their national parent organizations have partnered with us to raise awareness and stimulate action to improve health in their local members' communities.

## How can you get involved?

In communities large and small, people from all walks of life are taking ownership and action to improve health. Visit [countyhealthrankings.org](http://countyhealthrankings.org) to get ideas and guidance on how you can take action in your community. Working with others, you can improve the health of your community.



The green map below shows the distribution of Michigan's **health outcomes**, based on an equal weighting of length and quality of life.

Lighter colors indicate better performance in the respective summary rankings. Detailed information on the underlying measures is available on our web site.

### HEALTH OUTCOMES RANKS



County	Rank	County	Rank	County	Rank	County	Rank
Alcona	79	Dickinson	30	Lake	68	Oceana	66
Alger	23	Eaton	14	Lapeer	36	Ogemaw	47
Allegan	9	Emmet	13	Leelanau	2	Ontonagon	69
Alpena	74	Genesee	81	Lenawee	21	Osceola	29
Antrim	60	Gladwin	76	Livingston	4	Oscoda	77
Arenac	80	Gogebic	41	Luce	63	Otsego	37
Baraga	31	Grand Traverse	8	Mackinac	45	Ottawa	1
Barry	15	Gratiot	48	Macomb	39	Presque Isle	70
Bay	52	Hillsdale	34	Manistee	57	Roscommon	71
Benzie	17	Houghton	5	Marquette	18	Saginaw	73
Berrien	61	Huron	49	Mason	46	Sanilac	32
Branch	40	Ingham	33	Mecosta	20	Schoolcraft	51
Calhoun	78	Ionia	19	Menominee	26	Shiawassee	44
Cass	42	Iosco	62	Midland	11	St. Clair	65
Charlevoix	7	Iron	54	Missaukee	25	St. Joseph	59
Cheboygan	10	Isabella	12	Monroe	35	Tuscola	38
Chippewa	28	Jackson	50	Montcalm	27	Van Buren	55
Clare	72	Kalamazoo	43	Montmorency	64	Washtenaw	6
Clinton	3	Kalkaska	75	Muskegon	67	Wayne	82
Crawford	58	Kent	16	Newaygo	56	Wexford	53
Delta	24	Keweenaw	NR	Oakland	22		

The blue map displays Michigan’s summary ranks for **health factors**, based on weighted scores for health behaviors, clinical care, social and economic factors, and the physical environment.

Lighter colors indicate better performance in the respective summary rankings. Detailed information on the underlying measures is available on our web site.

### HEALTH FACTORS RANKS



County	Rank	County	Rank	County	Rank	County	Rank
Alcona	69	Dickinson	17	Lake	81	Oceana	74
Alger	46	Eaton	12	Lapeer	31	Ogemaw	68
Allegan	22	Emmet	11	Leelanau	9	Ontonagon	70
Alpena	26	Genesee	72	Lenawee	21	Osceola	43
Antrim	33	Gladwin	78	Livingston	5	Oscoda	66
Arenac	75	Gogebic	34	Luce	63	Otsego	24
Baraga	79	Grand Traverse	6	Mackinac	58	Ottawa	2
Barry	20	Gratiot	44	Macomb	28	Presque Isle	39
Bay	37	Hillsdale	50	Manistee	56	Roscommon	77
Benzie	15	Houghton	10	Marquette	4	Saginaw	64
Berrien	61	Huron	19	Mason	32	Sanilac	54
Branch	38	Ingham	27	Mecosta	51	Schoolcraft	36
Calhoun	67	Ionia	23	Menominee	52	Shiawassee	29
Cass	59	Iosco	57	Midland	7	St. Clair	53
Charlevoix	16	Iron	41	Missaukee	35	St. Joseph	60
Cheboygan	47	Isabella	25	Monroe	30	Tuscola	40
Chippewa	62	Jackson	48	Montcalm	42	Van Buren	55
Clare	76	Kalamazoo	18	Montmorency	80	Washtenaw	1
Clinton	3	Kalkaska	73	Muskegon	65	Wayne	82
Crawford	71	Kent	14	Newaygo	49	Wexford	45
Delta	13	Keweenaw	NR	Oakland	8		

## Summary Health Outcomes & Health Factors Rankings

Counties receive two ranks:

- Health Outcomes
- Health Factors

Each of these ranks represents a weighted summary of a number of measures.

Health outcomes represent how healthy a county is while health factors represent what influences the health of the county.

Rank	Health Outcomes	Rank	Health Factors
1	Ottawa	1	Washtenaw
2	Leelanau	2	Ottawa
3	Clinton	3	Clinton
4	Livingston	4	Marquette
5	Houghton	5	Livingston
6	Washtenaw	6	Grand Traverse
7	Charlevoix	7	Midland
8	Grand Traverse	8	Oakland
9	Allegan	9	Leelanau
10	Cheboygan	10	Houghton
11	Midland	11	Emmet
12	Isabella	12	Eaton
13	Emmet	13	Delta
14	Eaton	14	Kent
15	Barry	15	Benzie
16	Kent	16	Charlevoix
17	Benzie	17	Dickinson
18	Marquette	18	Kalamazoo
19	Ionia	19	Huron
20	Mecosta	20	Barry
21	Lenawee	21	Lenawee
22	Oakland	22	Allegan
23	Alger	23	Ionia
24	Delta	24	Otsego
25	Missaukee	25	Isabella
26	Menominee	26	Alpena
27	Montcalm	27	Ingham
28	Chippewa	28	Macomb
29	Osceola	29	Shiawassee
30	Dickinson	30	Monroe
31	Baraga	31	Lapeer
32	Sanilac	32	Mason
33	Ingham	33	Antrim
34	Hillsdale	34	Gogebic
35	Monroe	35	Missaukee
36	Lapeer	36	Schoolcraft
37	Otsego	37	Bay
38	Tuscola	38	Branch
39	Macomb	39	Presque Isle
40	Branch	40	Tuscola

Rank	Health Outcomes	Rank	Health Factors
41	Gogebic	41	Iron
42	Cass	42	Montcalm
43	Kalamazoo	43	Osceola
44	Shiawassee	44	Gratiot
45	Mackinac	45	Wexford
46	Mason	46	Alger
47	Ogemaw	47	Cheboygan
48	Gratiot	48	Jackson
49	Huron	49	Newaygo
50	Jackson	50	Hillsdale
51	Schoolcraft	51	Mecosta
52	Bay	52	Menominee
53	Wexford	53	St. Clair
54	Iron	54	Sanilac
55	Van Buren	55	Van Buren
56	Newaygo	56	Manistee
57	Manistee	57	Iosco
58	Crawford	58	Mackinac
59	St. Joseph	59	Cass
60	Antrim	60	St. Joseph
61	Berrien	61	Berrien
62	Iosco	62	Chippewa
63	Luce	63	Luce
64	Montmorency	64	Saginaw
65	St. Clair	65	Muskegon
66	Oceana	66	Oscoda
67	Muskegon	67	Calhoun
68	Lake	68	Ogemaw
69	Ontonagon	69	Alcona
70	Presque Isle	70	Ontonagon
71	Roscommon	71	Crawford
72	Clare	72	Genesee
73	Saginaw	73	Kalkaska
74	Alpena	74	Oceana
75	Kalkaska	75	Arenac
76	Gladwin	76	Clare
77	Oscoda	77	Roscommon
78	Calhoun	78	Gladwin
79	Alcona	79	Baraga
80	Arenac	80	Montmorency
81	Genesee	81	Lake
82	Wayne	82	Wayne

Not Ranked: Keweenaw



## 2014 County Health Rankings: Measures, Data Sources, and Years of Data

	Measure	Data Source	Years of Data
<b>HEALTH OUTCOMES</b>			
<b>Length of Life</b>	Premature death	National Center for Health Statistics	2008-2010
<b>Quality of Life</b>	Poor or fair health	Behavioral Risk Factor Surveillance System	2006-2012
	Poor physical health days	Behavioral Risk Factor Surveillance System	2006-2012
	Poor mental health days	Behavioral Risk Factor Surveillance System	2006-2012
	Low birthweight	National Center for Health Statistics	2005-2011
<b>HEALTH FACTORS</b>			
<b>HEALTH BEHAVIORS</b>			
<b>Tobacco Use</b>	Adult smoking	Behavioral Risk Factor Surveillance System	2006-2012
<b>Diet and Exercise</b>	Adult obesity	National Center for Chronic Disease Prevention and Health Promotion	2010
	Food environment index	USDA Food Environment Atlas, Map the Meal Gap	2010-2011
	Physical inactivity	National Center for Chronic Disease Prevention and Health Promotion	2010
	Access to exercise opportunities	OneSource Global Business Browser, Delorme map data, ESRI, & US Census Tigerline Files	2010 & 2012
<b>Alcohol and Drug Use</b>	Excessive drinking	Behavioral Risk Factor Surveillance System	2006-2012
	Alcohol-impaired driving deaths	Fatality Analysis Reporting System	2008-2012
<b>Sexual Activity</b>	Sexually transmitted infections	National Center for HIV/AIDS, Viral Hepatitis, STD, and TB prevention	2011
	Teen births	National Center for Health Statistics	2005-2011
<b>CLINICAL CARE</b>			
<b>Access to Care</b>	Uninsured	Small Area Health Insurance Estimates	2011
	Primary care physicians	HRSA Area Resource File	2011
	Dentists	HRSA Area Resource File	2012
	Mental health providers	CMS, National Provider Identification	2013
<b>Quality of Care</b>	Preventable hospital stays	Medicare/Dartmouth Institute	2011
	Diabetic screening	Medicare/Dartmouth Institute	2011
	Mammography screening	Medicare/Dartmouth Institute	2011
<b>SOCIAL AND ECONOMIC FACTORS</b>			
<b>Education</b>	High school graduation	data.gov, supplemented with National Center for Education Statistics	2010-2011
	Some college	American Community Survey	2008-2012
<b>Employment</b>	Unemployment	Bureau of Labor Statistics	2012
<b>Income</b>	Children in poverty	Small Area Income and Poverty Estimates	2012
<b>Family and Social Support</b>	Inadequate social support	Behavioral Risk Factor Surveillance System	2005-2010
	Children in single-parent households	American Community Survey	2008-2012
<b>Community Safety</b>	Violent crime	Uniform Crime Reporting - FBI	2009-2011
	Injury deaths	CDC WONDER	2006-2010
<b>PHYSICAL ENVIRONMENT</b>			
<b>Air and Water Quality</b>	Air pollution - particulate matter <sup>1</sup>	CDC WONDER	2011
	Drinking water violations	Safe Drinking Water Information System	FY 2012-2013
<b>Housing and Transit</b>	Severe housing problems	HUD, Comprehensive Housing Affordability Strategy	2006-2010
	Driving alone to work	American Community Survey	2008-2012
	Long commute – driving alone	American Community Survey	2008-2012

<sup>1</sup> Not available for AK and HI.

CREDITS

**Report Authors**

University of Wisconsin-Madison  
School of Medicine and Public Health  
Department of Population Health Sciences  
Population Health Institute

Bridget Catlin, PhD, MHSA  
Amanda Jovaag, MS  
Julie Willems Van Dijk, PhD, RN  
Patrick Remington, MD, MPH

This publication would not have been possible without the following contributions:

***Data***

Centers for Disease Control and Prevention: National Center for Health Statistics and Division of Behavioral Surveillance  
Dartmouth Institute for Health Policy & Clinical Practice

***Research Assistance***

Jennifer Buechner  
Hyojun Park, MA  
Elizabeth Pollock  
Jennifer Robinson  
Matthew Rodock, MPH  
Anne Roubal, MS

***Communications and Outreach***

Burness Communications  
Alison Bergum, MPA  
Matthew Call  
Kate Konkle, MPH  
Kitty Jerome, MA  
Karen Odegaard, MPH  
Jan O'Neill, MPA

***Design***

Forum One, Alexandria, VA

***Robert Wood Johnson Foundation***

Abbey Cofsky, MPH – Senior Program Officer  
Michelle Larkin, JD, MS, RN – Assistant Vice-President, Program Portfolios  
Marjorie Paloma, MPH – Senior Policy Advisor  
James S. Marks, MD, MPH – Senior Vice-President and Director, Program Portfolios  
Joe Marx – Senior Communications Officer

Suggested citation: University of Wisconsin Population Health Institute. *County Health Rankings 2014*.

INSIDE BACK COVER – INTENTIONALLY BLANK

# County Health Rankings & Roadmaps

Building a Culture of Health, County by County

[countyhealthrankings.org](http://countyhealthrankings.org)



University of Wisconsin Population Health Institute  
610 Walnut St, #524, Madison, WI 53726  
(608) 265-8240 / [info@countyhealthrankings.org](mailto:info@countyhealthrankings.org)

