

# RANKINGS IN ACTION: VIOLENCE REDUCTION



**Mary Bennett**  
Community  
Coach



**Ericka Burroughs-  
Girardi**  
Community Coach



**Tracie McClendon-  
Cole, Deputy Director**  
Health Department  
City of Kansas City,  
MO



**Shannon Cosgrove**  
Director of Health  
Policy,  
Cure Violence



**Rashid Junaid**  
Violence Prevention  
Manager,  
Aim4Peace

**September 8, 2016**

[www.countyhealthrankings.org](http://www.countyhealthrankings.org)

## County Health Rankings & Roadmaps

Building a Culture of Health, County by County

A Robert Wood Johnson Foundation program

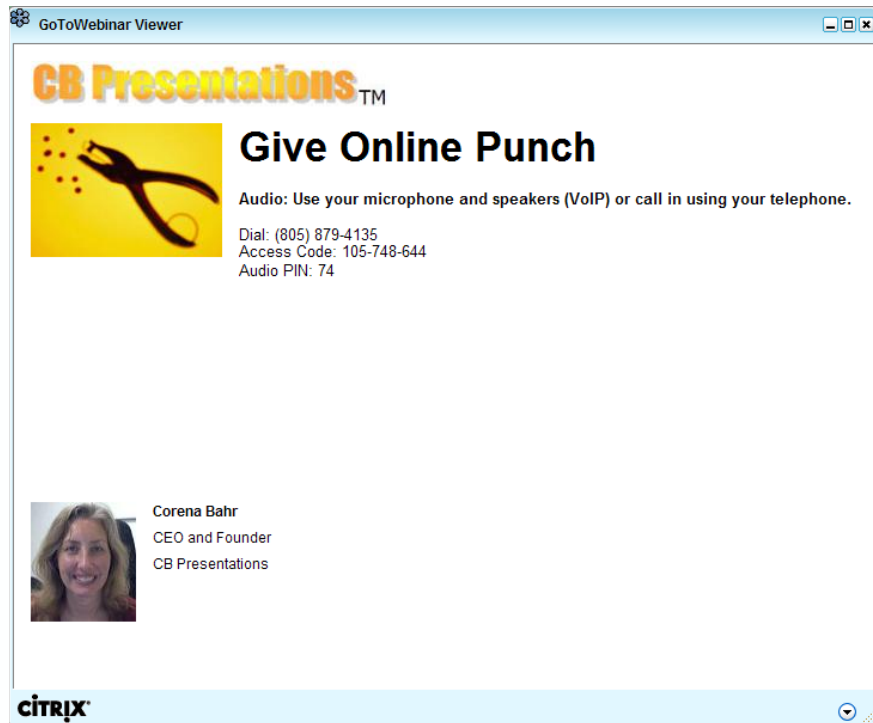


*County Health Rankings & Roadmaps* is a collaboration between the Robert Wood Johnson Foundation and the University of Wisconsin Population Health Institute.

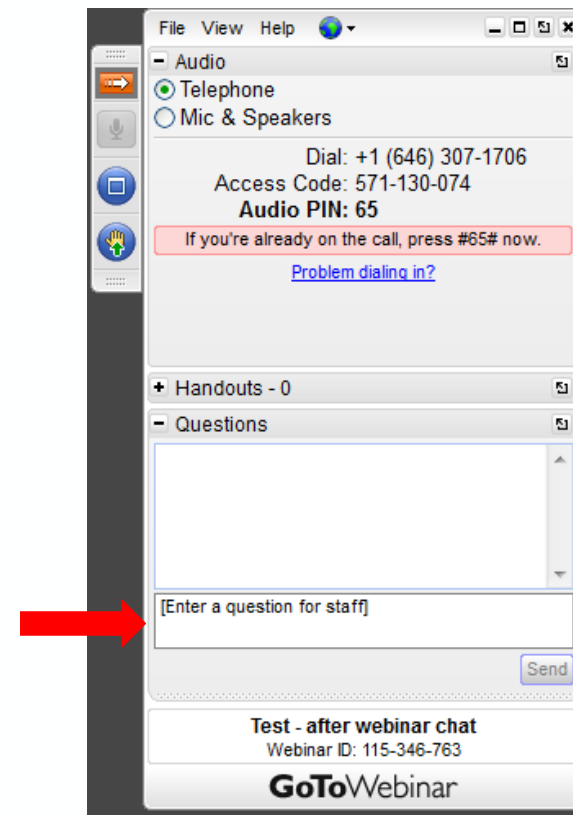
[www.countyhealthrankings.org](http://www.countyhealthrankings.org)

## GO TO WEBINAR ATTENDEE INTERFACE

### 1. Viewer Window



### 2. Control Panel



## County Health Rankings & Roadmaps

Building a Culture of Health, County by County

A Robert Wood Johnson Foundation program



### **GUIDING QUESTION**

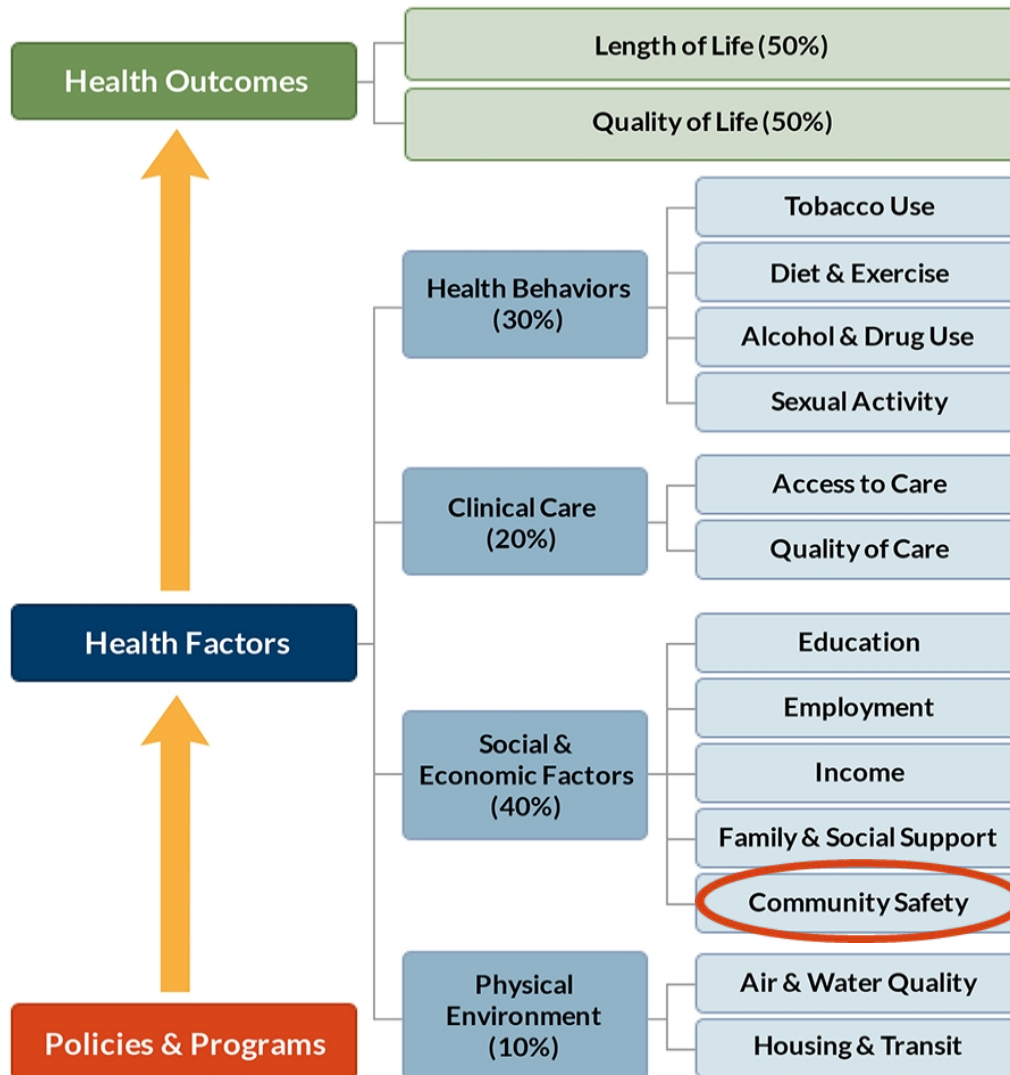
What strategies might you consider implementing in your community, to reduce violence and its negative impact on health?



# County Health Rankings & Roadmaps

Building a Culture of Health, County by County

A Robert Wood Johnson Foundation program



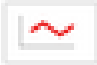
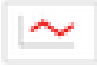

## WHY IS VIOLENCE REDUCTION IMPORTANT ?

High levels of violent crime:

- Compromise physical safety and psychological well-being
- Increase stress, which may exacerbate hypertension and other stress-related disorders
- Increase prevalence of certain illnesses such as upper respiratory illness and asthma
- Can deter residents from pursuing health behaviors such as exercising outdoors



# COUNTY SNAPSHOT – JACKSON COUNTY, MO

	Jackson County	Trend ⓘ	Error Margin	Top U.S. Performers ⓘ	Missouri	Rank (of 115)
<b>Social &amp; Economic Factors</b>						<b>91</b>
High school graduation	82%			93%	88%	
Some college	65%		64-66%	72%	65%	
Unemployment	7.1%			3.5%	6.1%	
Children in poverty	24%		20-27%	13%	21%	
Income inequality	4.9		4.8-5.0	3.7	4.6	
Children in single-parent households	42%		41-44%	21%	33%	
Social associations	11.3			22.1	11.8	
<b>Violent crime</b>	<b>815</b>			59	452	
Injury deaths	81		78-84	51	74	

# County Health Rankings & Roadmaps

Building a Culture of Health, County by County

A Robert Wood Johnson Foundation program





# WHAT WORKS FOR HEALTH

Find effective programs and  
policies at

[www.countyhealthrankings.org/  
what-works-for-health](http://www.countyhealthrankings.org/what-works-for-health)

## Evidence Rating



Scientifically Supported

## Search

Violence reduction



SEARCH

### Cure Violence model

Use a public health approach to violence, detecting and intervening in potentially violent situations, educating and mobilizing communities, and connecting at-risk youth to services; formerly called Chicago CeaseFire

### Community policing

Implement a policing philosophy based on community partnership, organizational transformation, and problem solving techniques to proactively address public safety issues

### School-based violence & bullying prevention programs

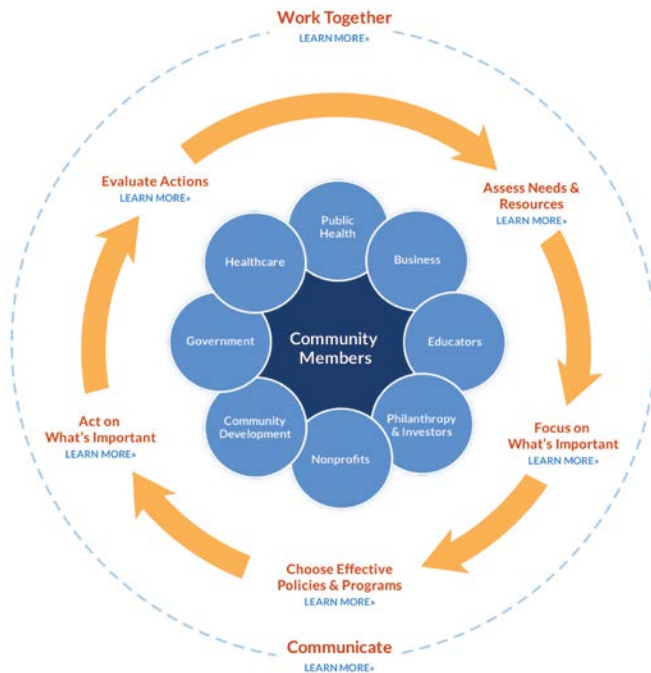
Address students' disruptive and antisocial behavior by teaching self-awareness, emotional self-control, self-esteem, social problem solving, conflict resolution, team work, social skills, etc.

# County Health Rankings & Roadmaps

Building a Culture of Health, County by County

A Robert Wood Johnson Foundation program

## Take action to improve your community's health



Ready to take action, but not sure what to do next?

**GET HELP**

## ***RWJF CULTURE OF HEALTH PRIZE***



- ▶ Defining health in the broadest possible terms.
- ▶ Committing to sustainable systems changes and policy-oriented long-term solutions.
- ▶ Cultivating a shared and deeply held belief in the importance of equal opportunity for health.
- ▶ Harnessing the collective power of leaders, partners, and community members.
- ▶ Securing and making the most of available resources.
- ▶ Measuring and sharing progress and results.

# WELCOME KANSAS CITY GUESTS

---



**Tracie McClendon-  
Cole, Deputy Director  
Health Department  
City of Kansas City,  
MO**



**Shannon Cosgrove  
Director of Health  
Policy,  
Cure Violence**



**Rashid Junaid  
Violence Prevention  
Manager,  
Aim4Peace**





World Health  
Organization

# Health

“a complete state of physical, mental and social well-being, and not merely the absence of disease or infirmity.”

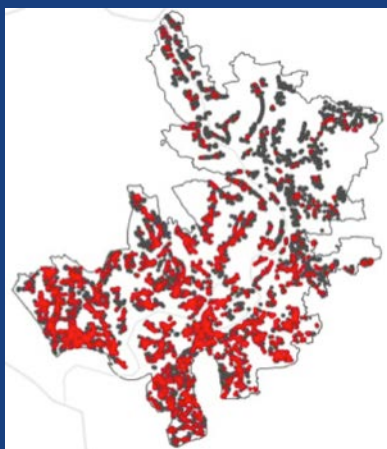
*obviously impossible while there is violence!*

Preamble to the Constitution of the World Health Organization as adopted 19 June - 22 July 1946; signed by the representatives of 61 States, and entered into force on 7 April 1948.

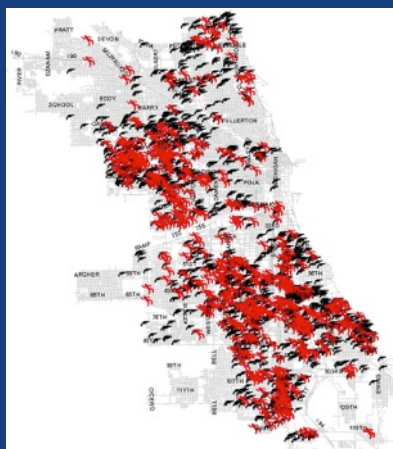
# Violence Has Characteristics of Epidemics: it's Contagious

1. Violence clusters - like a disease

Cholera

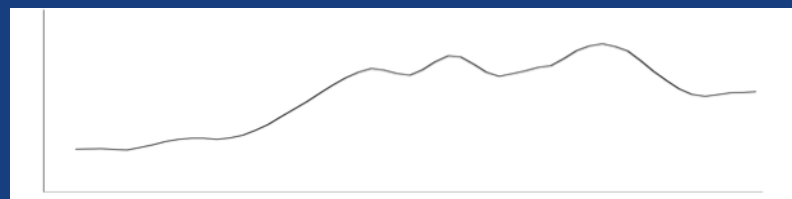


Violence

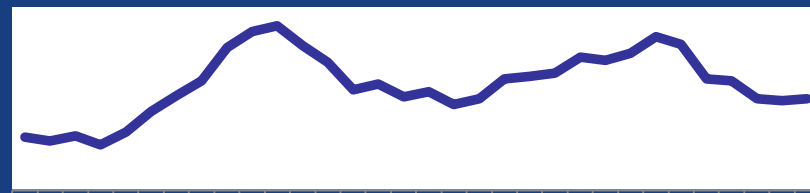


2. Violence spreads - like a disease

Influenza



Violence



3. Violence is transmitted -  
through exposure, modeling,  
social learning, and norms.



# Violence Disparity

## *Getting WORSE*

### Heckler Report Health Disparity



Health Issue	1985	2013	Disparity Change
Cancer	30% Higher	30% Higher	No change
Cardio/Stroke	20% Higher	30% Higher	Up 50%
Cirrhosis	70% Higher	30% Higher	Down 57%
Diabetes	110% Higher	100% Higher	Down 9%
Infant Mortality	110% Higher	110% Higher	No change
Accident (& homicide)	70% Higher	10% Higher	Down 85%
<b>Homicide</b>	<b>400% Higher</b>	<b>470% Higher</b>	<b>Up 18%</b>

# HEALTH APPROACHES TO PREVENTING VIOLENCE

(very incomplete)



Health approach = health institutions leading violence prevention work, including hospital interruption or community outreach programs



# Why a movement?

Today, the common way of looking at violence and the people who commit violence is still that of “bad people” . . .

- . . . resulting in racial bias, inequitable treatment, and “criminalizing”
- . . . facilitating abuses of power and further trauma
- . . . blocking health approaches – in understanding, funding, practice, etc

# Re-Understanding Violence

(reduces current inequity promoting understanding)

**Moralism**  
(not helpful)



**SCIENCE**

**Bad** People

**Bad** Choice

Adverse  
Circumstances  
(contribute)

**CONTAGION**  
(exposure  
dependent)

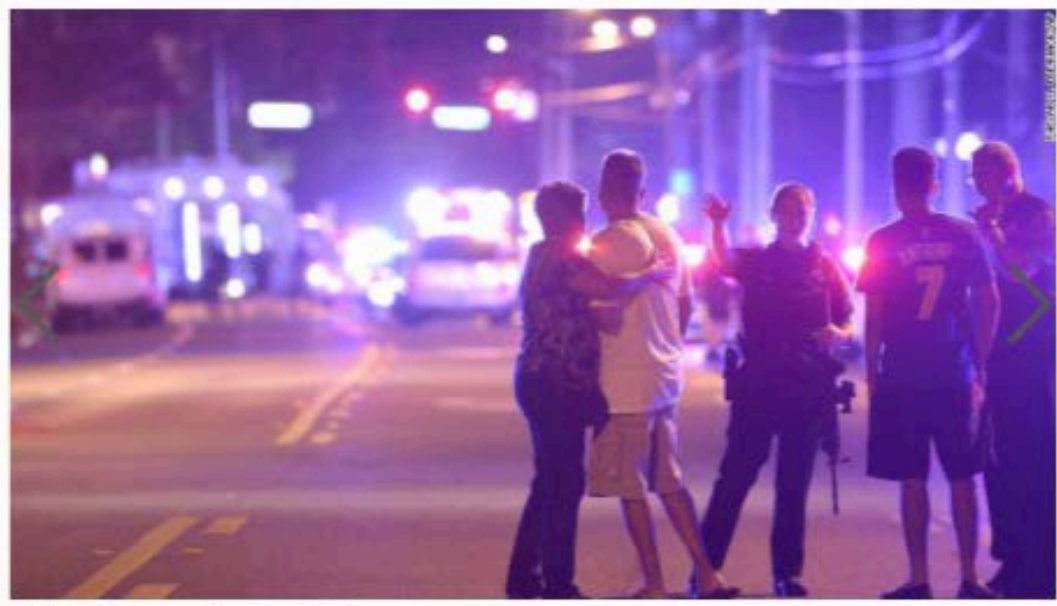
Health » Dr. Sanjay Gupta: The epidemic of gun violence is treatable

Live TV

U.S. Edition + menu

# Dr. Sanjay Gupta: The epidemic of gun violence is treatable

By **Dr. Sanjay Gupta**, Chief Medical Correspondent  
Updated 9:24 AM ET, Thu December 3, 2015



Photos: Worst mass shootings in U.S.

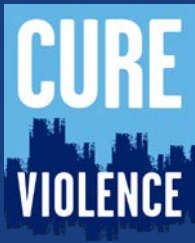
Police direct family members away from the scene of a shooting Sunday, June 12, at the Pulse nightclub in Orlando. A gunman opened fire at the club, killing 50 people and injuring at least 53, police said. It is now the deadliest shooting rampage in U.S. history.

“Thinking of this epidemic of preventable deaths as an infection that can be diagnosed, treated and perhaps cured, I feel more hopeful than I have been in a long time.”

5/1 ARM 2.63% 3.21% APR  
Refinance \$225,000 loan \$904/mo

wellbe

trend, we can't sit on the sidelines. We must take action. When we saw that



# Long Term View

Neighborhood and family violence are treated and prevented by the health sector in partnership with law enforcement and other sectors

The health sector and community work together in a systematic way through health, fairness and equity lenses

Violence is reduced in the U.S. cities

A delineated set of unfair and harmful practices that in 2016 are common are reduced by 70%





---

# Approaching Violence as a Communicable Disease: Why the New Paradigm is Working

*Tracie McClendon-Cole, J.D., MPA, Deputy Director  
Rashid Junaid, Violence Prevention Manager*

*City of Kansas City, Missouri  
Health Department*



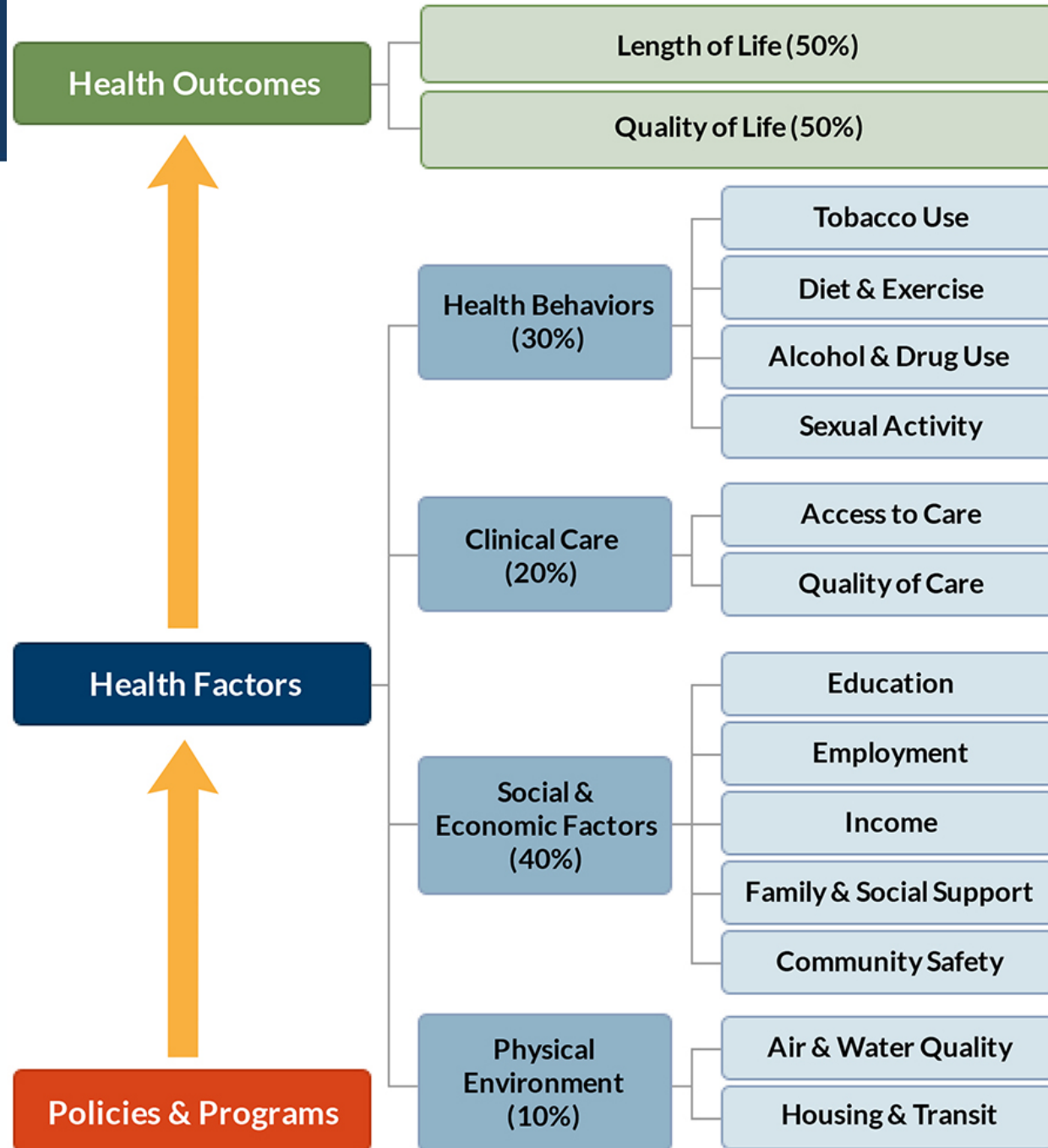
**Public Health**  
Prevent. Promote. Protect.



## County Health Rankings & Roadmaps

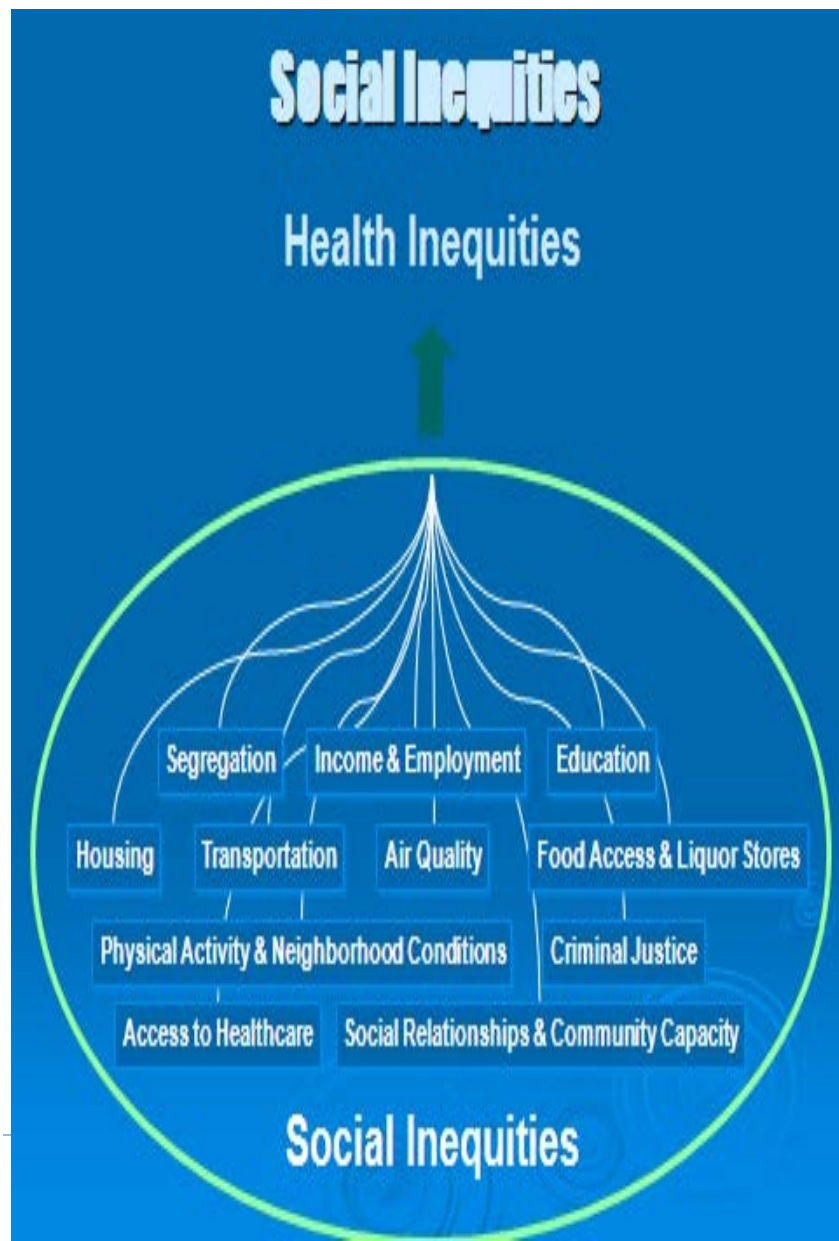
Building a Culture of Health, County by County

- What Creates Health?
- What are the Determinants of Health/Health Factors that drive Health Outcomes?






# Achieving Health Equity by Addressing the Social Determinants of Health

- It is time to stop thinking of health as something we get at the doctor's office
- Health starts—long before illness-- in our homes, neighborhoods, schools and jobs.
- All residents should have the opportunity to make the choices that allow them to live a long, healthy life, regardless of their income, education or ethnic background.
- Your neighborhood or job shouldn't be hazardous to your health.
- The more we see the problem of health this way, the more opportunities we have to improve it.



# COUNTY SNAPSHOT – JACKSON COUNTY, MO

	Jackson County	Trend ⓘ	Error Margin	Top U.S. Performers ⓘ	Missouri	Rank (of 115)
<b>Social &amp; Economic Factors</b>						<b>91</b>
→ High school graduation	82%			93%	88%	
Some college	65%		64-66%	72%	65%	
→ Unemployment	7.1%			3.5%	6.1%	
→ Children in poverty	24%		20-27%	13%	21%	
→ Income inequality	4.9		4.8-5.0	3.7	4.6	
→ Children in single-parent households	42%		41-44%	21%	33%	
Social associations	11.3			22.1	11.8	
<b>Violent crime</b>	<b>815</b>			59	452	
Injury deaths	81		78-84	51	74	

***The punishment theory***   
***to the everything theory***

**dysfunctional communities**

**poverty**

**poor schools**

**family & mental disorders**

**racism**

**absent fathers**

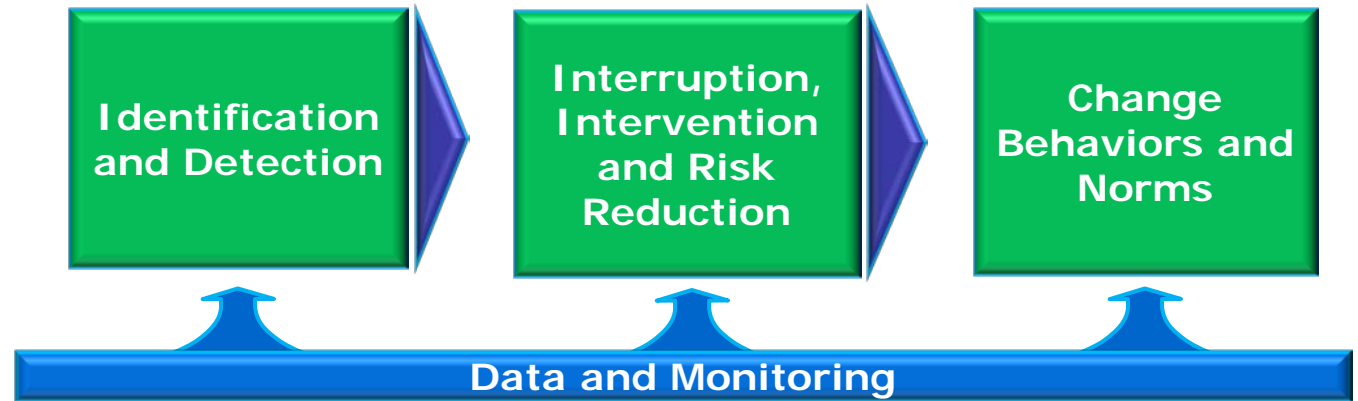
**broken homes**

**lead exposure**

**and more...**



# Treating Violence Like a Contagious Disease



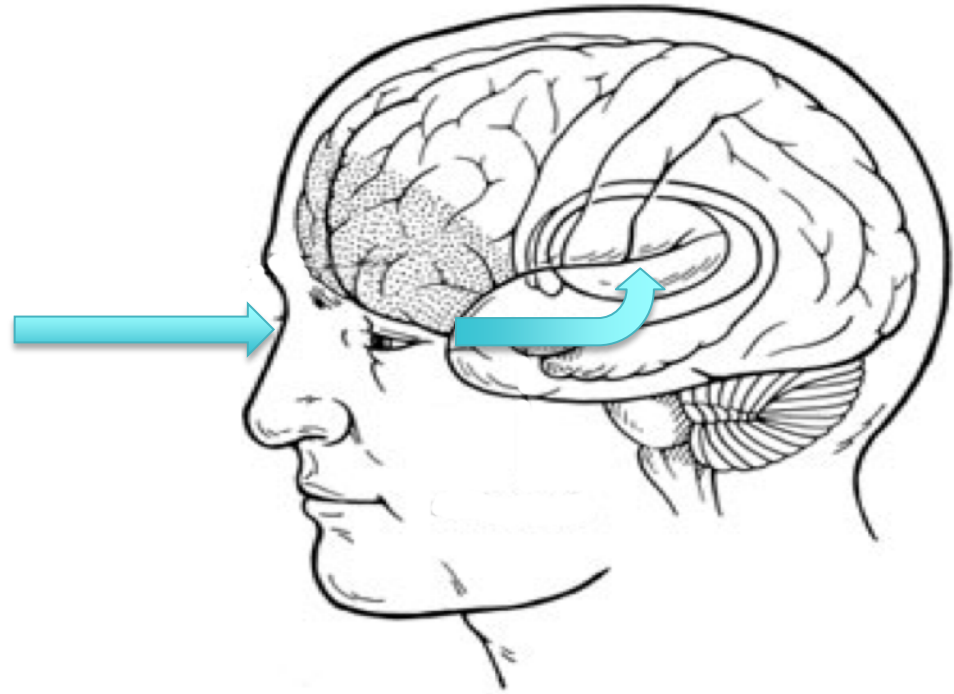
*“Aim4Peace continues to reach a segment of the community that has demonstrated the propensity for committing violent acts. Law enforcement has not been successful in building trusting relationships with many of those who have shown the propensity for violence.”*



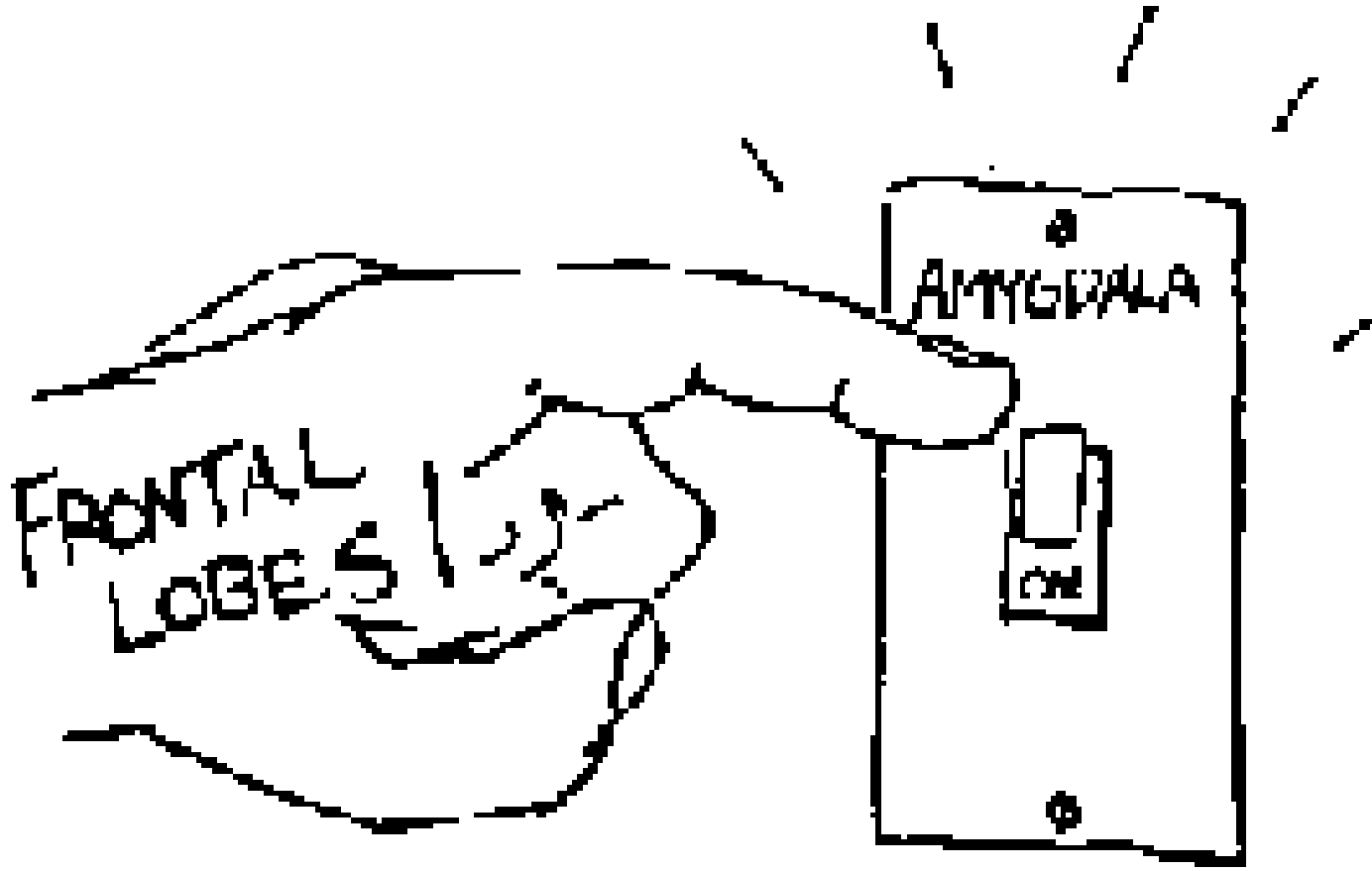
# Mapping

# MEANS OF TRANSMISSION

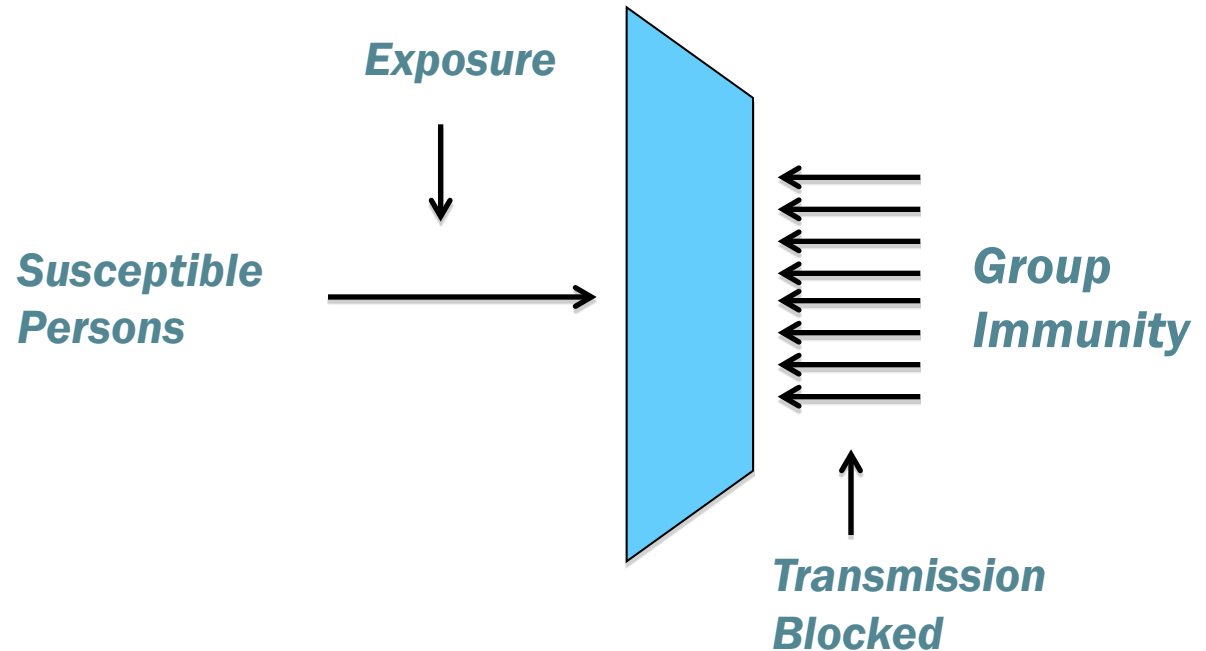
**VIOLENCE**  
TRANSMISSION



**BRAIN PROCESSING**



# New norms



***NEW SOCIAL EXPECTATIONS***



# Credible Messengers



Interrupt Transmission



Change Behavior

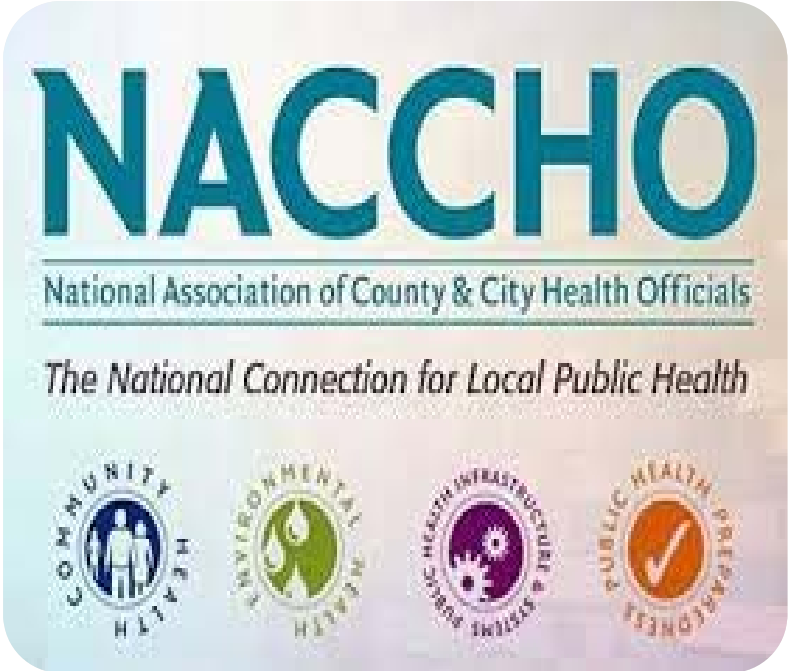
Change Norms



DON'T SHOOT.  
I want to grow up.

DON'T

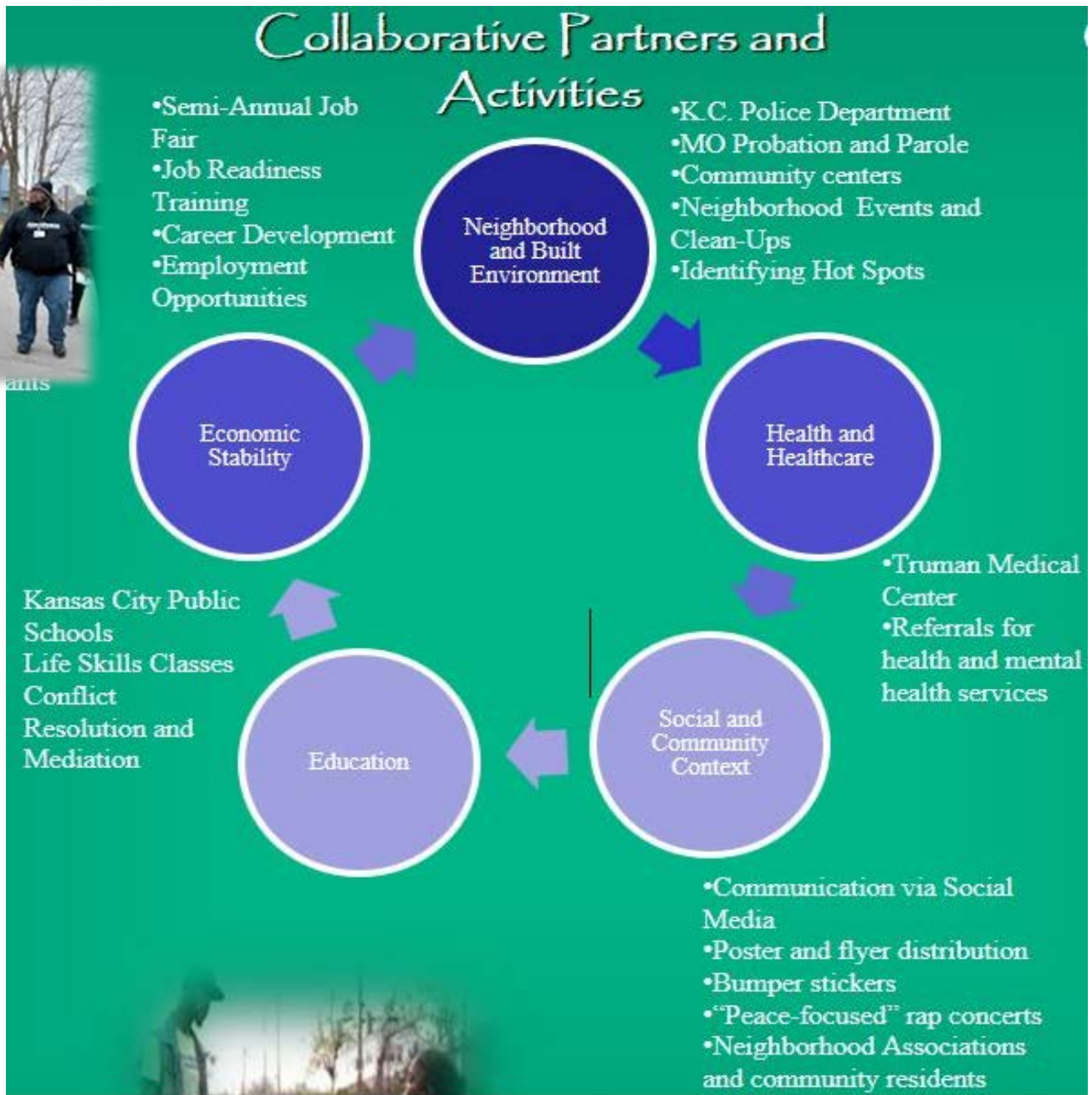
# Aim4Peace is a Model Pra



NACCHO Model Practices

- ✓ Aim4Peace is a 2016 NACCHO Model Practice Awardee
- ✓ Chosen from a field of 68 applications; Aim4Peace was one of 19 selected
- ✓ To be a model practice the program must demonstrate collaboration, innovation, responsiveness and evaluation (both process and outcome)







## County Health Rankings & Roadmaps

Building a Culture of Health, County by County

A Robert Wood Johnson Foundation program



# QUESTIONS

# STAYING CONNECTED

---

- ▶ Follow @CHRankings
- ▶ Like Facebook.com/  
CountyHealthRankings
- ▶ e-Newsletter, email  
[chr@match.wisc.edu](mailto:chr@match.wisc.edu) to  
subscribe



follow us on  
**twitter**





## ACKNOWLEDGEMENTS

---

- ▶ Robert Wood Johnson Foundation
  - Including Abbey Cofsky, Andrea Ducas, Michelle Larkin, Jim Marks, Joe Marx, Don Schwarz, Amy Slonim, Katie Wehr
- ▶ *Wisconsin County Health Rankings & Roadmaps* Team
  - Including Julie Willems Van Dijk, Marjory Givens, Kitty Jerome, Carrie Carroll, Amanda Jovaag, Alison Bergum, Astra Iheukumere
- ▶ Our Partners
  - Including Active Living by Design, Burness, CDC, Dartmouth Institute, Local Initiatives Support Corporation, National Association of Counties, United Way Worldwide

## County Health Rankings & Roadmaps

Building a Culture of Health, County by County

A Robert Wood Johnson Foundation program



### **GUIDING QUESTION**

What strategies might you consider implementing in your community, to reduce violence and its negative impact on health?

# THANK YOU!

[www.countyhealthrankings.org](http://www.countyhealthrankings.org)

University of Wisconsin Population Health Institute

Madison, WI

[match-info@match.wisc.edu](mailto:match-info@match.wisc.edu)

(608) 265-8240

## AFTER CLASS DISCUSSION

---

- ▶ Continue with us for an additional 15 minutes
- ▶ Submit your questions via question box

