

County Health
Rankings & Roadmaps

Building a Culture of Health, County by County

A Robert Wood Johnson Foundation program

DATA IN DEPTH: MAKING THE MOST OF YOUR *RANKINGS* DATA



Amanda Jovaag
Data Lead



Karen Odegaard
Community Health
Improvement Specialist

January 19, 2016

www.countyhealthrankings.org



Support
provided by

Robert Wood Johnson
Foundation

County Health
Rankings & Roadmaps

Building a Culture of Health, County by County

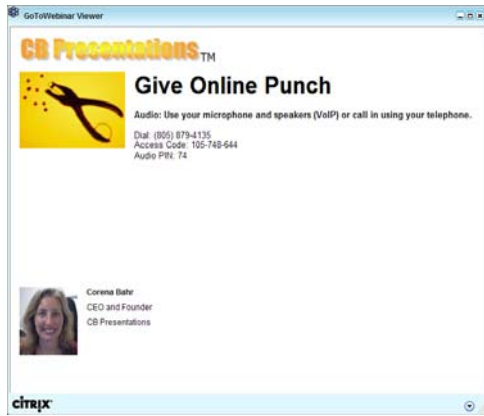
A Robert Wood Johnson Foundation program

County Health Rankings & Roadmaps is a collaboration between the Robert Wood Johnson Foundation and the University of Wisconsin Population Health Institute.

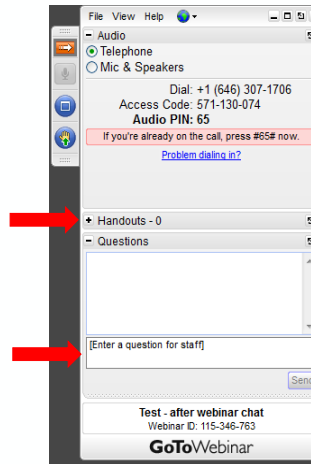
www.countyhealthrankings.org

GO TO WEBINAR ATTENDEE INTERFACE

1. Viewer Window



2. Control Panel



3

OUTLINE

County Health Rankings & Roadmaps Program Overview

Explore the Rankings Data

Using the Rankings Data

Q & A

After Class

4



ESSENTIAL QUESTION

How can *County Health Rankings & Roadmaps* help us understand and find data for our community?

5

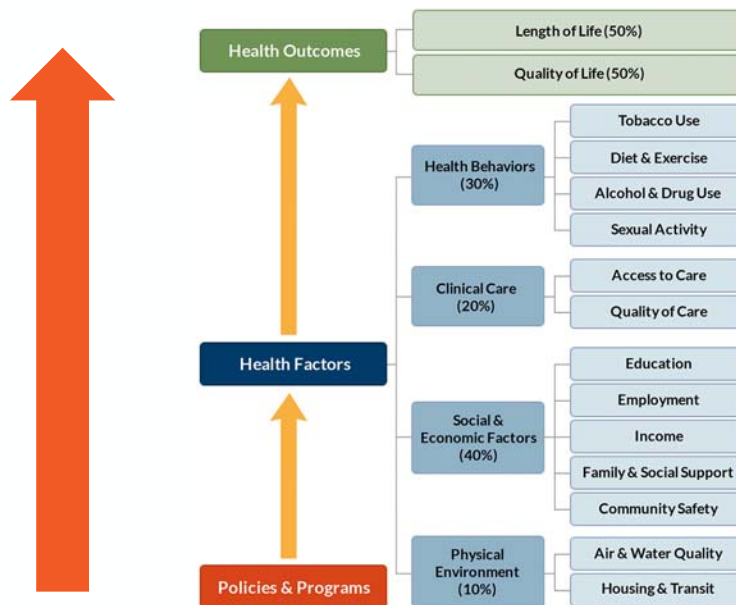
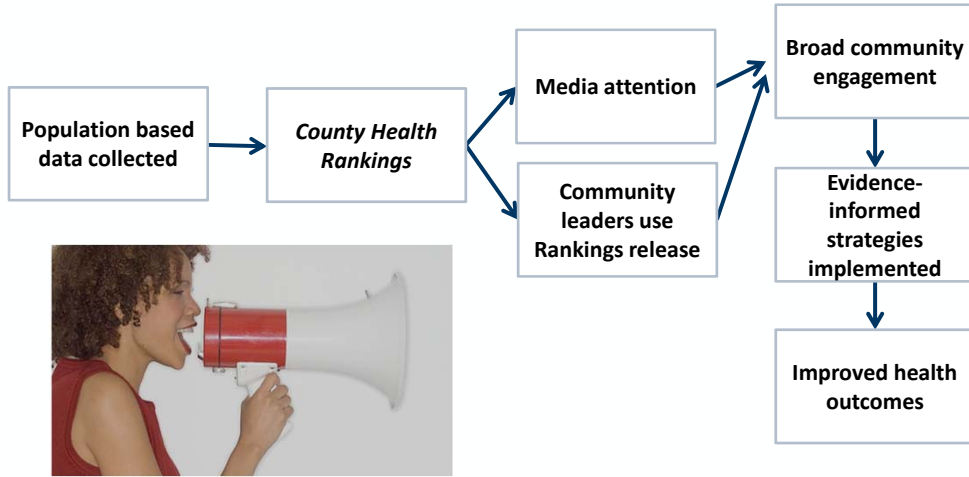
REFLECTION QUESTIONS

- ▶ Who else do you need to share this information with?
- ▶ What is one new area of the website that you will use or explore?
- ▶ What else do you need to know to take action/use this information?



6

COUNTY HEALTH RANKINGS LOGIC MODEL



USING THE RANKINGS DATA

Using the Rankings Data

Communities Using the Rankings Data

Exploring the Data

Making Use of Your Snapshot

Digging Deeper

Broaden Your View

Visualize the Data

Finding More Data

Communities Using the Rankings Data

The *County Health Rankings* provide a snapshot of a community's health and a starting point for investigating and focusing ways to build a Culture of Health. This guide provides examples of how communities have used *Rankings* data in local health-improvement efforts. Visit the *Roadmaps to Health Action Center* to learn more about how you can improve health in your community.

Engage communities in health improvement

The *Rankings* are the beginning of the discussion when it comes to community health – the next step is to get moving.

- In San Bernardino (CA) the local health department used the *Rankings* to show policymakers the need for change. The *Rankings* informed the health department's drive to get every community in the county to launch a Healthy Communities initiative.
- The *Rankings* prompted a "sense of urgency" for the United Way of Greater Toledo (OH) along with the community it represents. The *County Health Rankings* model became a tool to talk about the social determinants of health and how to respond.
- The mayor in Gem County (ID) greeted the news of the *Rankings* as a "wake-up call," leading to an effort to target areas for improvement.
- A coalition in the Springfield (MA) region dedicated to building a healthier community used the *County Health Rankings* model as a catalyst in a report on health equity.
- The *Rankings* provided a framework for a Blueprint for Action in Coachella Valley (CA).

Assess the health of a community

Communities across the country are incorporating *County Health Rankings* data into community

GOING DEEPER WITH DATA

- ▶ Communities Using the Rankings Data ←
- ▶ Exploring the Data
- ▶ Making Use of Your Snapshot
- ▶ Digging Deeper
- ▶ Broaden Your View
- ▶ Visualize the Data
- ▶ Finding More Data

11

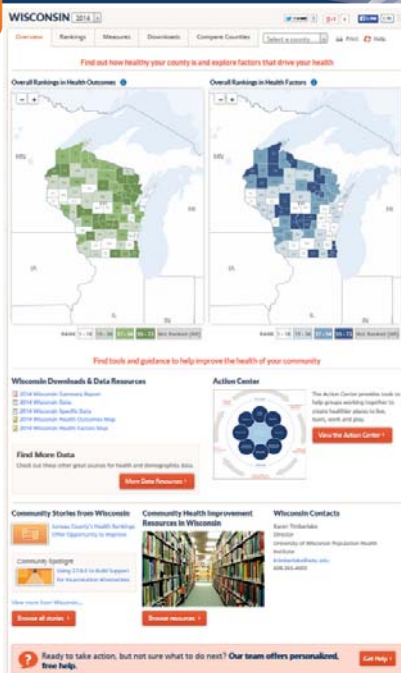
COMMUNITIES USING DATA



12

DATA INDEPTH

- ▶ Communities Using the Rankings Data
- ▶ Exploring the Data ←
- ▶ Making Use of Your Snapshot
- ▶ Digging Deeper
- ▶ Broaden Your View
- ▶ Visualize the Data
- ▶ Finding More Data



DATA IN DEPTH

- ▶ Communities Using the Rankings Data
- ▶ Exploring the Data
- ▶ Making Use of Your Snapshot ←
- ▶ Digging Deeper
- ▶ Broaden Your View
- ▶ Visualize the Data
- ▶ Finding More Data

25

MAKING USE OF YOUR SNAPSHOT

- ▶ Make comparisons to other geographic areas
- ▶ Examine trends
- ▶ Focus on important measures

26

SPARTANBURG COUNTY

Spartanburg (SP)

County Snapshot | Additional Measures

Areas to Explore ON OFF

	Spartanburg County	Trend	Error Margin	Top U.S. Performers*	South Carolina	Rank (of 46)
Health Outcomes						17
Length of Life						13
Premature death	8,442		8,080-8,804	5,200	8,281	
Quality of Life						23
Poor or fair health	17%		15-20%	10%	16%	
Poor physical health days	3.8		3.4-4.3	2.5	3.6	
Poor mental health days	4.3		3.5-5.1	2.3	3.7	
Low birthweight	10.0%		9.6-10.3%	5.9%	9.9%	

SPARTANBURG COUNTY

	Spartanburg County	Trend	Error Margin	Top U.S. Performers*	South Carolina	Rank (of 46)
Health Factors						10
Health Behaviors						12
Adult smoking	20%		17-22%	14%	20%	
Adult obesity	29%		27-32%	25%	32%	
Food environment index	6.4			8.4	6.7	
Physical inactivity	27%		25-30%	20%	26%	
Access to exercise opportunities	74%			92%	71%	
Excessive drinking	12%		9-14%	10%	14%	
Alcohol-impaired driving deaths	38%			14%	42%	
Sexually transmitted infections	533			138	575	
Teen births	51		49-53	20	46	
Clinical Care						17
Uninsured	20%		19-22%	11%	20%	
Primary care physicians	1,528:1			1,045:1	1,521:1	
Dentists	2,139:1			1,377:1	2,002:1	
Mental health providers	1,188:1			386:1	702:1	
Preventable hospital stays	64		61-67	41	54	
Diabetic monitoring	88%		85-92%	90%	86%	
Mammography screening	66.5%		63.0-69.9%	70.7%	67.1%	
Social & Economic Factors						11
High school graduation	79%				75%	
Some college	57.1%		54.7-59.5%	71.0%	60.2%	
Unemployment	7.3%			4.0%	7.6%	
Children in poverty	27%		23-31%	13%	27%	
Income inequality	4.8		4.6-5.0	3.7	4.9	
Children in single-parent households	36%		34-39%	20%	40%	
Social associations	13.5			22.0	12.2	
Violent crime	484			59	577	
Injury deaths	76		72-81	50	72	
Physical Environment						35
Air pollution - particulate matter	12.9			9.5	12.6	
Drinking water violations	5%			0%	4%	
Severe housing problems	14%		13-15%	9%	16%	
Driving alone to work	85%		84-86%	71%	83%	
Long commute - driving alone	26%		24-27%	15%	31%	

County Health Rankings & Roadmaps

Building a Culture of Health, County by County

A Robert Wood Johnson Foundation program

SPARTANBURG COUNTY

Spartanburg County	Trend	Error Margin	Top U.S. Performers*	South Carolina	Rank (of 46)
Health Factors					
					10
Health Behaviors					
					12
Adult smoking	<0%		17-22%	14%	20%
Adult obesity	29%		27-32%	25%	32%
Food environment index	6.4		8.4	6.7	
Physical inactivity	27%		25-30%	20%	26%
Access to exercise opportunities	74%		92%	71%	
Excessive drinking	12%		9-14%	10%	14%
Alcohol-impaired driving deaths	38%		14%	42%	
Sexually transmitted infections	533		138	575	
Teen births	51		49-53	20	46
Clinical Care					
					17
Uninsured	<0%		19-22%	11%	20%
Primary care physicians	1,528:1		1,045:1	1,521:1	
Dentists	2,139:1		1,377:1	2,002:1	
Mental health providers	1,188:1		386:1	702:1	
Preventable hospital stays	64		61-67	41	54
Diabetic monitoring	88%		85-92%	90%	86%
Mammography screening	66.5%		63.0-69.9%	70.7%	67.1%

Spartanburg County	Trend	Error Margin	Top U.S. Performers*	South Carolina	Rank (of 46)
Social & Economic Factors					
					11
High school graduation	79%			75%	
Some college	57.1%		54.7-59.5%	71.0%	60.2%
Unemployment	7.3%		4.0%	7.6%	
Children in poverty	27%		23-31%	13%	27%
Income inequality	4.8		4.6-5.0	3.7	4.9
Children in single-parent households	36%		34-39%	20%	40%
Social associations	13.5		22.0	12.2	
Violent crime	404		59	577	
Injury deaths	76		72-81	50	72
Physical Environment					
					35
Air pollution - particulate matter	12.9		9.5	12.6	
Drinking water violations	5%		0%	4%	
Severe housing problems	14%		13-15%	9%	16%
Driving alone to work	85%		84-86%	71%	83%
Long commute - driving alone	26%		24-27%	15%	31%

29

County Health Rankings & Roadmaps

Building a Culture of Health, County by County

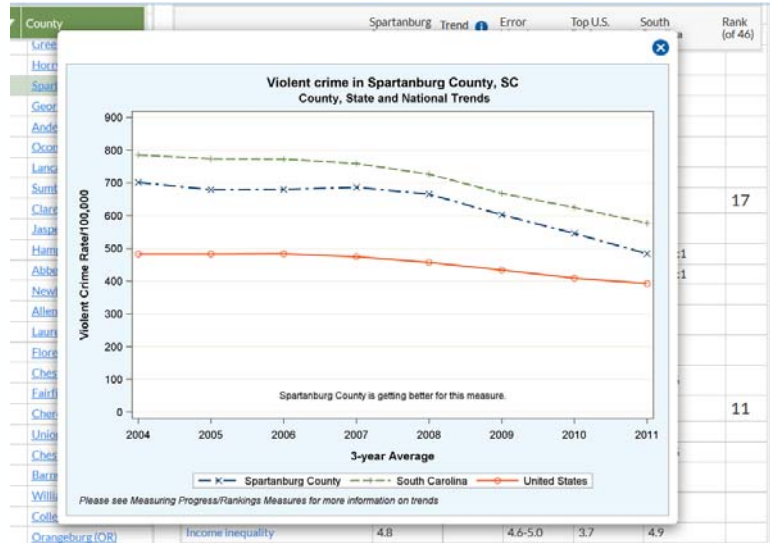
A Robert Wood Johnson Foundation program

SPARTANBURG COUNTY - TRENDS

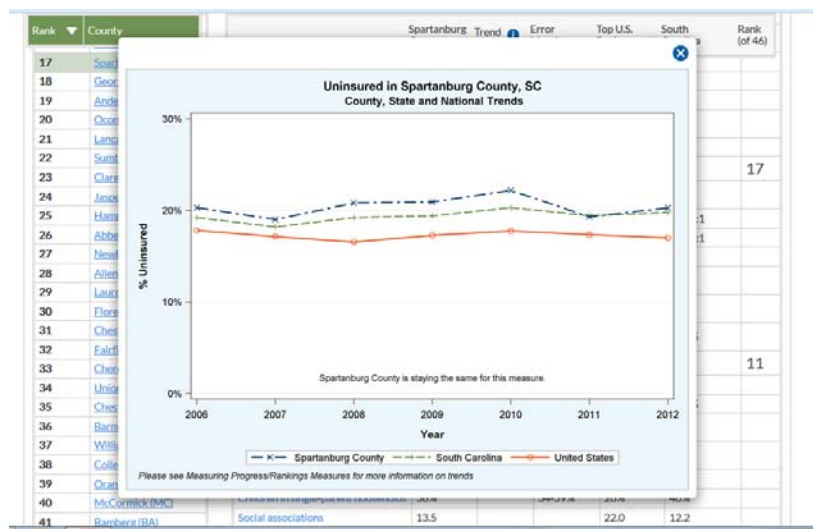


30

SPARTANBURG COUNTY - TRENDS



SPARTANBURG COUNTY - TRENDS



DATA IN DEPTH

- ▶ Communities Using the Rankings Data
- ▶ Exploring the Data
- ▶ Making Use of Your Snapshot
- ▶ Digging Deeper ←
- ▶ Broaden Your View
- ▶ Visualize the Data
- ▶ Finding More Data

33

DIGGING DEEPER

Differences Among Population Groups

- Does this measure differ across age groups?
- How does this measure vary among racial or ethnic groups?
- How does this measure vary across groups with different socioeconomic characteristics?

Differences by Locale/Neighborhood

- Are there specific ZIP codes, neighborhoods, or school districts where the measure indicates a localized problem or opportunity?

34

DIGGING DEEPER

Measure	Age	Gender	Race	Education	Income	Subcounty Area
---------	-----	--------	------	-----------	--------	----------------

Teen births

County-level data are available for counties with populations of 100,000 persons or more in CDC WONDER, and you can stratify by the age, race, or education of the mother among other variables

Uninsured

On the SAHIE website, you can stratify by age, gender, and poverty ratios. In addition, the Community Commons Health Equity Assessment Report provides you with information by age, gender, race and provides a census tract map of the rate of uninsured. Note, you will need to log in to the website in order to access these reports.

Poor mental health days	Yes	Yes	Yes	Yes	Yes	No
Low birthweight	Yes	N/A	Yes	Yes	No	No

Natality, 2007-2013 Results

Request Form Results Map Chart About

[Natality Information](#) [Dataset Documentation](#) [Other Data Access](#) [Help for Results](#) [Printing Tips](#) [Help with Exports](#) [Export](#) [Reset](#)

Quick Options More Options [Top](#) [Notes](#) [Citation](#) [Query Criteria](#)

Messages:
 Totals are not available for these results due to suppression constraints. [More Information.](#)
 Rows with suppressed Births are hidden. Use Quick Options above to show suppressed rows.

Year ↓	Race	Births ↑↓	Female Population ↑↓	Fertility Rate Per 1,000 ↑↓
2007	Black or African American	222	14,040	15.81
	White	310	40,460	7.66
2008	Asian or Pacific Islander	11	1,486	7.40
	Black or African American	221	14,216	15.55
2009	White	372	41,070	9.06
	Asian or Pacific Islander	11	1,550	7.10
2010	Black or African American	238	14,320	16.62
	White	323	41,199	7.84
2011	Black or African American	199	14,368	13.85
	White	285	40,841	6.98
2012	Black or African American	174	14,341	12.13
	White	282	40,849	6.90
2013	Black or African American	123	14,357	8.57
	White	272	40,833	6.66
2013	Black or African American	96	14,304	6.71
	White	217	40,844	5.31

[Top](#) [Options](#) [Notes](#) [Citation](#) [Query Criteria](#)

UNINSURED

Topic-based Reports

Spartanburg uninsured

Report Area

Spartanburg County, SC

Social & Economic Factors

Economic and social inequality often are associated with poor health. Poverty, unemployment, and lack of educational achievement affect access to care and a community's ability to engage in healthy behaviors. Without a network of support and a safe community, families cannot thrive. Ensuring access to social and economic resources provides a foundation for a healthy community.

Uninsured Population

The lack of health insurance is considered a key sign of health status.

This indicator reports the percentage of the total civilian non-institutionalized population without health insurance coverage. This indicator is relevant because lack of insurance is a primary barrier to healthcare access including regular primary care, specialty care, and other health services that contribute to poor health status.

Report Area	Total Population (per 100,000)	Total Uninsured Population	Percent Uninsured Population	Percent Uninsured Population
Spartanburg County, SC	382,630	50,002	13.07%	24%
South Carolina	4,578,525	781,803	16.64%	24%
United States	336,448,480	45,569,668	13.55%	24%

Note: Not included in comparison with the average.

Data Source: US Census Bureau, <https://data.census.gov/tables/> 2019-13, County population



Uninsured Population, Percent by Tract, ACS 2019-23

■ Over 20.0%
■ 15.1 - 20.0%
■ 10.1 - 15.0%
■ Under 10.0%
■ No Data or Data Suppressed
 Report Area

Uninsured Population by Gender

Report Area	Total Male	Total Female	Percent Male	Percent Female
Spartanburg County, SC	25,761	24,241	18.93%	18.2%
South Carolina	400,382	381,421	18.21%	15.19%
United States	24,508,364	21,063,298	16.38%	13.42%

Page 1 of 4

GOING DEEPER WITH DATA

- ▶ Communities Using the Rankings Data
- ▶ Exploring the Data
- ▶ Making Use of Your Snapshot
- ▶ Digging Deeper
- ▶ Broaden Your View ←
- ▶ Visualize the Data
- ▶ Finding More Data

BROADEN YOUR VIEW

Health Behaviors

- How many people were cited for operating while intoxicated or underage drinking?
- What is the prevalence of syphilis, gonorrhea, herpes or other STDs?

Clinical Care

- What percentage of the population has seen a dentist in the last year?
- How do the health plans in your region score on quality indicators, e.g. HEDIS, NCQA?

Social and Economic Factors

- How many people are underemployed?
- What types of crimes are the most common?

Physical Environment

- What are the levels of various air pollutants, e.g., carbon monoxide, ozone, lead, mercury, nitrous oxides?
- What are your community's policies about building bike lanes and paths?

39

GOING DEEPER WITH DATA

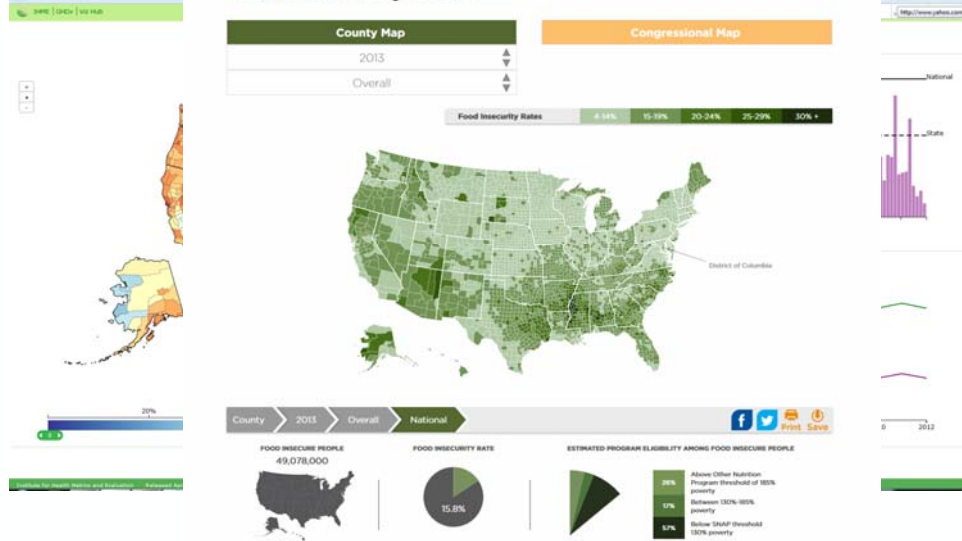
- Communities Using the Rankings Data
- Exploring the Data
- Making Use of Your Snapshot
- Digging Deeper
- Broaden Your View
- Visualize the Data ←
- Finding More Data

40

VISUALIZ

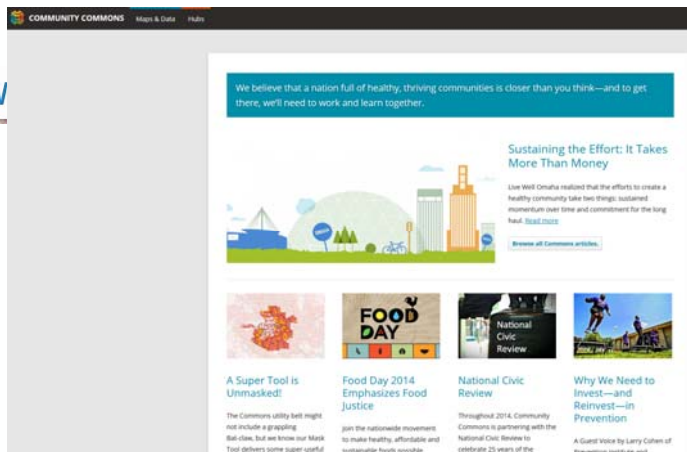
Upon map load, make a selection from the dropdowns to begin using the map.

Food Insecurity Rates



VISUALIZE THE DATA

- More national sources of data



GOING DEEPER WITH DATA

- ▶ Communities Using the Rankings Data
- ▶ Exploring the Data
- ▶ Making Use of Your Snapshot
- ▶ Digging Deeper
- ▶ Broaden Your View
- ▶ Visualize the Data
- ▶ Finding More Data ←



Formerly the Rural Assistance Center

- Online Library -
- Topics & States -
- Community Health Gateway -
- Tools for Success -
- RHIhub Publications & Updates -

Topics > Finding Statistics and Data Related to Rural Health

Data Sources & Tools Relevant to Rural Health

Source/Tool	Topics	Ease of Use	Geographic Level of Data	Frequency Updated
2014 Update of the Rural-Urban Characterization	Data from many federal sources on the following topics: Demographics Health behaviors and risk factors Mortality rates	Printed report Excel spreadsheet	National Regional 5 levels of urbanization/rurality	Infrequent. The 2014 edition updates a 2001 report from the CDC.
Individual data tables (Excel)	Healthcare access and use Other health measures			
Aging Integrated Database (AGID): 2008-2012 ACS Special Tabulation on Aging	American Community Survey data on the population 60 and older, covering: Demographics Disability status Employment Income Poverty	Easy, web-based interface	National State County Rural	Annual release based on 5-year ACS estimates
Aging Integrated Database (AGID): County-Level Population Estimates Data Custom Tables	Population estimates for the population 60 and older by: Age range Gender Race/ethnicity	Easy, web-based interface	County	Annual
American Community	Demographic Age and sex	A variety of tools are available, for various	National State	Data estimates

(most favorable quartile) (middle two quartiles) (least favorable quartile)

	(most favorable quartile)	(middle two quartiles)	(least favorable quartile)
Mortality		Cancer deaths Chronic kidney disease deaths Coronary heart disease deaths Diabetes deaths	Alzheimer's disease deaths Chronic lower respiratory disease (COPD) deaths Female life expectancy Male life expectancy Motor vehicle deaths Stroke deaths Unintentional injury (excludes motor vehicle)
Morbidity		Adult obesity Alzheimer's disease/dementia Cancer Gonorrhea HIV	Adult diabetes Adult overall health status Older adult asthma Older adult depression Preterm births Suicides
Health Care Access and Quality		Older adult preventable hospitalizations	Cost barrier to care Primary care provider access Uninsured
Health Behaviors	Adult blood drinking	Adult female smoking rate Adult smoking	Adult physical inactivity Teen births
Social Factors	High housing costs	Children in single-parent households On-time high school graduation Poverty Unemployment Violent crime	Wadeable riparian support
Physical Environment	Housing stress Livable near highways	Annual average PM2.5 concentration	Access to parks Limited access to healthy food

STATE-SPECIFIC DATA SOURCES

South Carolina

Data Sources

These data sources provide information for communities looking for more local data. These sources provide either unique, local data; more information on **demographic** breakdowns (e.g., age, sex, race/ethnicity); or data for **sub-county** geographic units (e.g., cities, zipcodes or school districts).

Name	Description	Breakdown
South Carolina Community Assessment Network - Data	South Carolina Community Assessment Network provides access to various county-level data, including: births, deaths, cancer incidence and mortality, childhood lead surveillance, community summary profiles, mother's health/lifestyle, and Pregnancy Risk Assessment Monitoring System.	Demographic
South Carolina Department of Health and Environmental Control - Data and Statistics	The Department of Health and Environmental Control provides data for: vital statistics, environmental factors, Behavioral Risk Factor Surveillance System, Central Cancer Registry, infectious diseases, and more. Also, county-level fact sheets are available with information on: asthma, chronic diseases, diabetes, and leading causes of death.	Demographic
South Carolina Environmental Public Health Tracking	South Carolina is part of the National Tracking Network, created in partnership with the Centers for Disease Control and Prevention to make data on environmental hazards, exposures, and health effects easier to find and use.	Demographic
South Carolina Youth Tobacco Survey	This survey provides data on tobacco use of middle and high school students from across the state. It also includes data on school curriculum, knowledge and attitudes, mass media influences, and exposure to secondhand smoke.	Demographic
South Carolina Health Data	In its current form, SCHealthData.org will serve as an easy-to-use source of data and information on hospitals in South Carolina, including measures such as profitability, expenses and pay for top staff.	
South Carolina Office of Research and Statistics - Health and Demographics	This site provides health care and demographic data at the county and community level for South Carolina.	Demographic
South Carolina's Information Highway	South Carolina's Information Highway provides education statistics for South	Sub-County

45

REFLECTION QUESTIONS

- ▶ Who else do you need to share this information with?
- ▶ What is one new area of the website that you will use or explore?
- ▶ What else do you need to know to take action/use this information?



46



QUESTIONS

47



2016 WEBINARS

Register for upcoming webinars and find recordings at

www.countyhealthrankings.org/webinars

48

STAYING CONNECTED

- ▶ Follow @CHRankings
- ▶ Like Facebook.com/CountyHealthRankings
- ▶ e-Newsletter, email chr@match.wisc.edu to subscribe



follow us on
twitter



49

ACKNOWLEDGEMENTS

- ▶ Robert Wood Johnson Foundation
 - Including Abbey Cofsky, Andrea Ducas, Michelle Larkin, Jim Marks, Joe Marx, Don Schwarz, Amy Slonim, Katie Wehr
- ▶ Wisconsin *County Health Rankings & Roadmaps* Team
 - Including Bridget Catlin, Julie Willems Van Dijk, Kitty Jerome, Carrie Carroll, Amanda Jovaag, Alison Bergum, Astra Iheukumere
- ▶ Our Partners
 - Including Active Living by Design, Burness, CDC, Dartmouth Institute, Local Initiatives Support Corporation, National Association of Counties, NeighborWorks, United Way Worldwide

50