

County Health
Rankings & Roadmaps

Building a Culture of Health, County by County

A Robert Wood Johnson Foundation program

COUNTY HEALTH RANKINGS METHODS AND MEASURES



Amanda Jovaag

www.countyhealthrankings.org



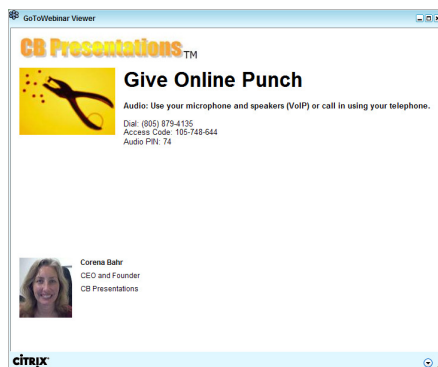
County Health
Rankings & Roadmaps

Building a Culture of Health, County by County

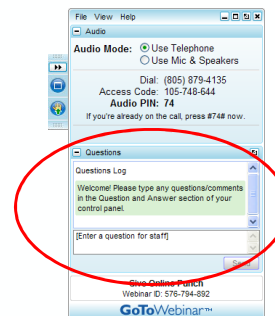
A Robert Wood Johnson Foundation program

GOTOWEBINAR ATTENDEE INTERFACE

1. Viewer Window



2. Control Panel



ACKNOWLEDGEMENTS

- ▶ Robert Wood Johnson Foundation
 - Including Abbey Cofsky, Andrea Ducas, Michelle Larkin, Jim Marks, Joe Marx,
- ▶ Wisconsin *County Health Rankings & Roadmaps* Team
 - Including Bridget Catlin, Julie Willems Van Dijk, Matt Rodock, Kathryn Hatchell, Hyojun Park, Elizabeth Pollock, Anne Roubal
- ▶ Our Partners
 - Including Burness, United Way Worldwide, National Association of Counties, NNPHI, Dartmouth Institute, CDC, NCHS

3

OUTLINE

County Health Rankings & Roadmaps Background ←

What's New for 2015?

2015 Measures

Methods: *Rankings* Calculation

Special Data Issues

Wrap-Up; Q & A

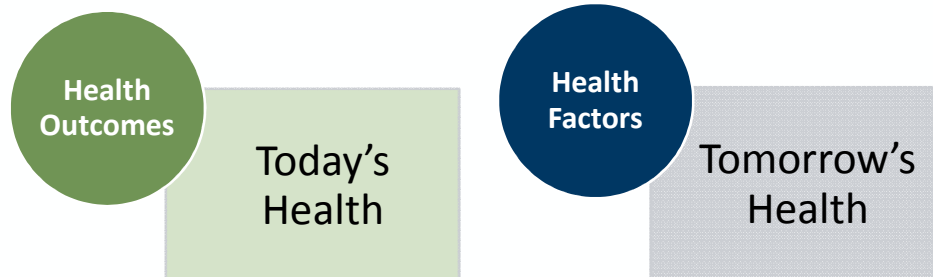
4

County Health Rankings Logic Model



5

COUNTY HEALTH RANKINGS: 2 RANKINGS



6

OUTLINE

County Health Rankings & Roadmaps Background

What's New for 2015?



2015 Measures

Methods: *Rankings* Calculation

Special Data Issues

Wrap-Up; Q & A

The screenshot displays the website's header with the logo and navigation menu. The main content area features a large map of the United States with state abbreviations (MA, RI, CT, DE, DC, MD) listed on the right. Above the map is a search bar with the text "Search by county or select a state". To the right of the map, there are two featured sections: "RWJF CULTURE OF HEALTH PRIZE" with a photo of children and a "LEARN MORE" button, and "WHAT CAN YOU DO?" with a photo of a person running.

County Health Rankings & Roadmaps

Building a Culture of Health, County by County

A Robert Wood Johnson Foundation program

TOOLS & RESOURCES

WEBINARS

BLOG

Dane

TOOLS & RESOURCES

WEBINARS

BLOG

Dane

ABOUT

FAQ

Search

Dane

Search

3 results found matching "Dane"

Even When Your County is Healthy, a Check-Up Can

Dane County, Wisconsin is, for the most part, a pretty healthy place to live. I should know. I'm one of the developers of the County Health Rankings. The report – produced by the University of Wisconsin Population Health Institute and the Robert Wood Johnson Foundation – shows that Dane County is in the top 10% of counties in the nation for overall health status.

Literacy Network Improves Adults' Health Care Knowledge in WI

Literacy skills are a key predictor of an individual's health status. After attending the 2009 Health Literacy Summit in Madison, WI, Literacy Network of Dane County [1] developed /English for Health/ [2], an award-winning program that helps adults...

Public-Private Partnerships: A Commitment to Improve Health

Public-private partnerships play a critical role in mobilizing community health through building, enhancing, and sustaining county policies and programs. During a panel discussion at the National Association of Counties (NACo) Roadmaps to Health...

Search

Dane

SEARCH

4 results found matching "Dane"

Dane, WI: County Snapshot

Rankings Data - <http://dev.chr.forumone.com/app/wisconsin/2014/rankings/dane/county/outcomes/overall/snapshot>

Public-Private Partnerships: A Commitment to Improve Health

Public-private partnerships play a critical role in mobilizing community health through building, enhancing, and sustaining county policies and programs. During a panel discussion at the National Association of Counties (NACo) Roadmaps to Health...

Even When Your County is Healthy, a Check-Up Can Help

Dane County [1]. Wisconsin is, for the most part, a pretty healthy place to live. I should know. I'm one of the developers of the /County Health Rankings/ [2]. The report - produced by the University of Wisconsin Population Health Institute and the Robert Wood Johnson Foundation - shows that Dane County is in the top 10% of counties in the nation for overall health status.

Literacy Network Improves Adults' Health Care Knowledge in WI

Literacy skills are a key predictor of an individual's health status. After attending the 2009 Health Literacy Summit in Madison, WI, Literacy Network of Dane County [1] developed /English for Health/ [2], an award-winning program that helps adults...

County Health Rankings & Roadmaps

Building a Culture of Health, County by County

A Robert Wood Johnson Foundation program

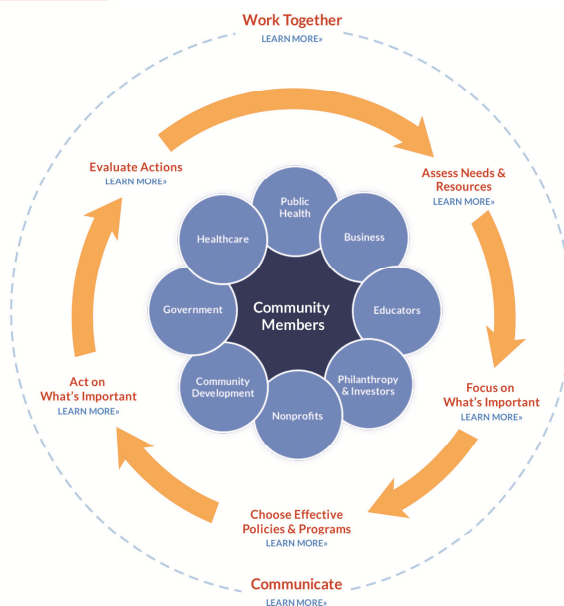
MEASURE MAPS

10

USING THE RANKINGS DATA



11



12

OUTLINE

County Health Rankings & Roadmaps Background

What's New for 2015?

2015 Measures 

Methods: *Rankings* Calculation

Special Data Issues

Wrap-Up; Q & A

13

HOW ARE MEASURES SELECTED?

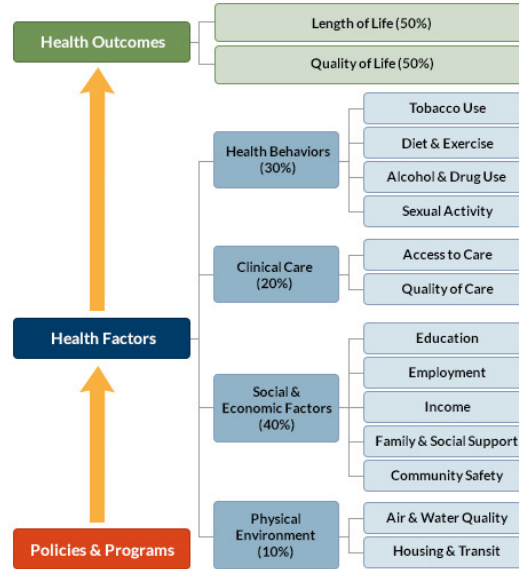
- Reflect important aspects of population health that can be improved
- Valid, reliable, recognized and used by others
- Available at the county level
- Available for free or low cost
- As up-to-date as possible
- Fewer measures better than more

14

County Health Rankings & Roadmaps

Building a Culture of Health, County by County

A Robert Wood Johnson Foundation program



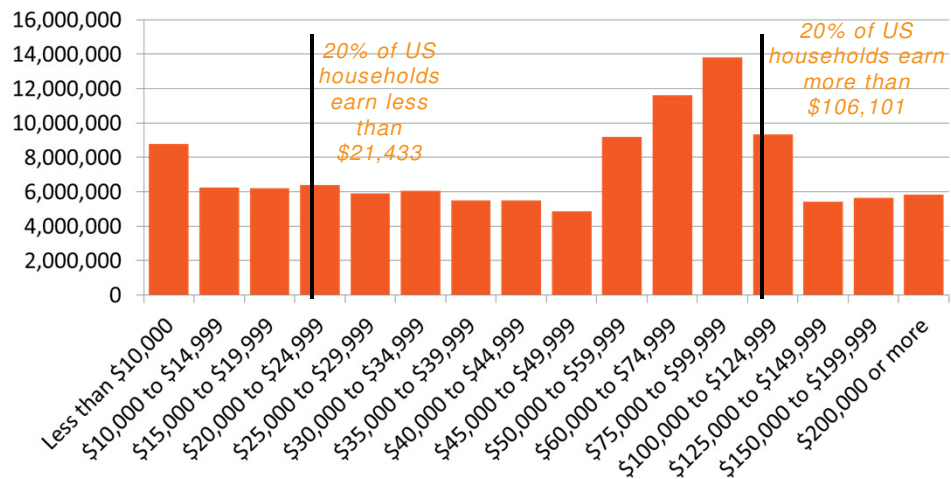
15

County Health Rankings & Roadmaps

Building a Culture of Health, County by County

A Robert Wood Johnson Foundation program

NEW MEASURE – INCOME INEQUALITY



16

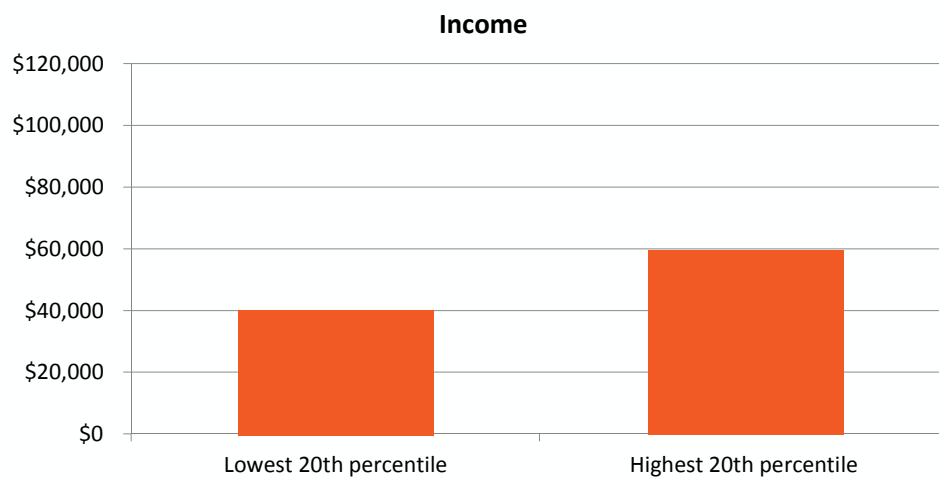
NEW MEASURE – INCOME INEQUALITY

- Ratio of household income at the 80th percentile to income at the 20th percentile
- Data source: American Community Survey
- Years: 2009-2013

Minimum	10th Percentile	Median	National Average	90th Percentile	Maximum
2.6	3.7	4.4	4.9	5.4	9.7

17

INCOME INEQUALITY



18

HEALTH OUTCOMES

FOCUS AREA	MEASURE	DATA SOURCE	YEARS
LENGTH OF LIFE (50%)	Premature Death (50%) (Years Of Potential Life Lost)	National Center for Health Statistics	2010-2012
QUALITY OF LIFE (50%)	Poor or Fair Health (10%)	Behavioral Risk Factor Surveillance System (BRFSS)	2006-2012
	Poor Physical Health Days (10%)		
	Poor Mental Health Days (10%)		
	Low Birthweight (20%)	National Center for Health Statistics	2006-2012

HEALTH BEHAVIORS

FOCUS AREA	MEASURE	DATA SOURCE	YEARS
TOBACCO USE (10%)	Adult Smoking (10%)	BRFSS	2006-2012
DIET AND EXERCISE (10%)	Adult Obesity (5%)	CDC Diabetes Interactive Atlas	2011
	Food Environment Index (2%)	USDA & Feeding America	2012
	Physical Inactivity (2%)	CDC Diabetes Interactive Atlas	2011
	Access To Exercise Opportunities (1%)	Delorme & ESRI	2010 & 2013
ALCOHOL USE (5%)	Excessive Drinking (2.5%)	Behavioral Risk Factor Surveillance System	2006-2012
	Alcohol-impaired Driving Deaths (2.5%)	Fatality Analysis Reporting System	2009-2013
SEXUAL ACTIVITY (5%)	Sexually Transmitted Infections (2.5%)	National Center for Hepatitis, HIV, STD, and TB Prevention	2012
	Teen Births (2.5%)	National Center for Health Statistics	2006-2012

CLINICAL CARE

FOCUS AREA	MEASURE	DATA SOURCE	YEARS
ACCESS TO CARE (10%)	Uninsured (5%)	Small Area Health Insurance Estimates	2012
	Primary Care Physicians (3%)	Area Health Resource File/American Medical Association	2012
	Dentists (1%)	Area Health Resource File/National Provider Identification File	2013
	Mental Health Providers (1%)	CMS, National Provider Identification	2014
QUALITY OF CARE (10%)	Preventable Hospital Stays (5%)	Dartmouth Institute: Dartmouth Atlas of Health Care, Medicare Claims Data	2012
	Diabetic Monitoring (2.5%)		
	Mammography Screening (2.5%)		

21

SOCIAL AND ECONOMIC FACTORS

FOCUS AREA	MEASURE	DATA SOURCE	YEARS
EDUCATION (10%)	High School Graduation (5%)	National Center For Education Statistics	2011-2012
	Some College (5%)	American Community Survey	2009-2013
EMPLOYMENT (10%)	Unemployment (10%)	US Bureau of Labor Statistics	2013
INCOME (10%)	Children In Poverty (7.5%)	Small Area Income And Poverty Estimates	2013
	Income Inequality (2.5%)	American Community Survey	2009-2013
FAMILY AND SOCIAL SUPPORT (5%)	Single-parent Households (2.5%)	American Community Survey	2009-2013
	Social Associations (2.5%)	County Business Patterns	2012
COMMUNITY SAFETY (5%)	Violent Crime (2.5%)	Uniform Crime Reporting, Federal Bureau of Investigation	2010-2012
	Injury Deaths (2.5%)	CDC WONDER	2008-2012

22

PHYSICAL ENVIRONMENT

FOCUS AREA	MEASURE	DATA SOURCE	YEARS
AIR & WATER QUALITY (5%)	Air Pollution – Particulate Matter (2.5%)	CDC WONDER Environmental data, NASA Applied Sciences Program/Public Health Program	2011
	Drinking Water Violations (2.5%)	Safe Drinking Water Information System	FY2013-2014
HOUSING & TRANSIT (5%)	Severe Housing Problems (2%)	Comprehensive Housing Affordability Strategy (CHAS) data	2007-2011
	Driving Alone To Work (2%)	American Community Survey	2009-2013
	Long Commute – Driving Alone (1%)	American Community Survey	2009-2013

23

OUTLINE

County Health Rankings & Roadmaps Background

What's New for 2015?

2015 Measures

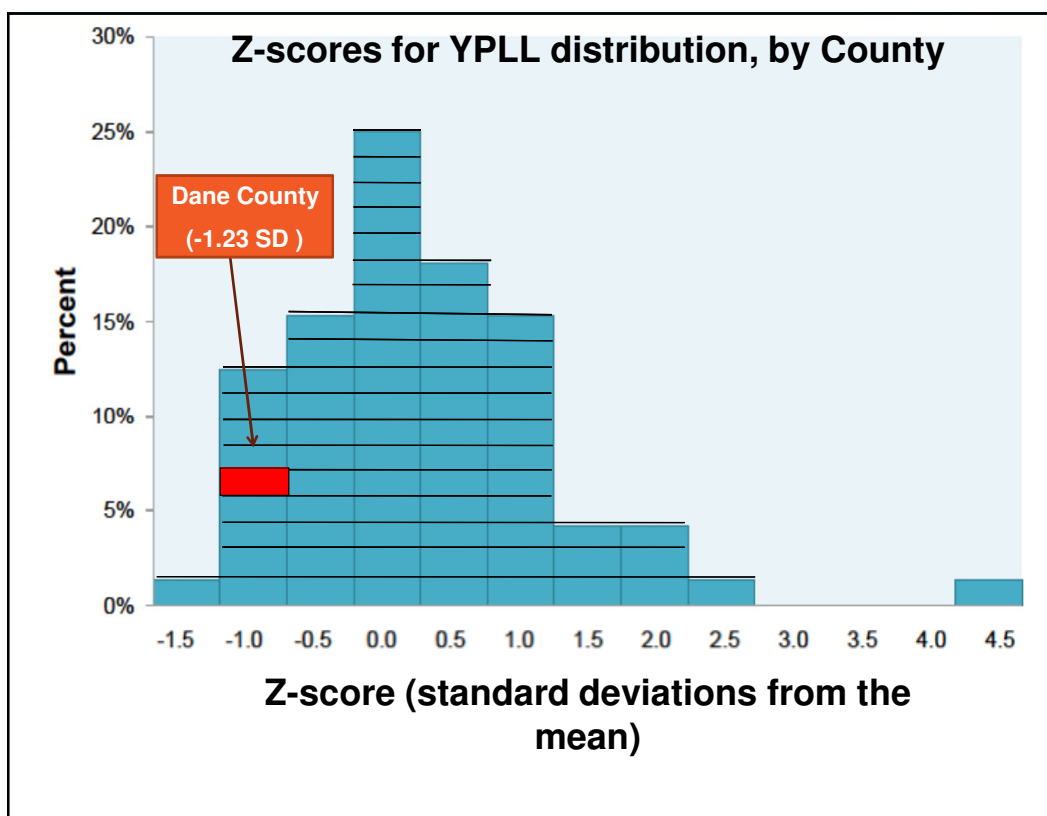
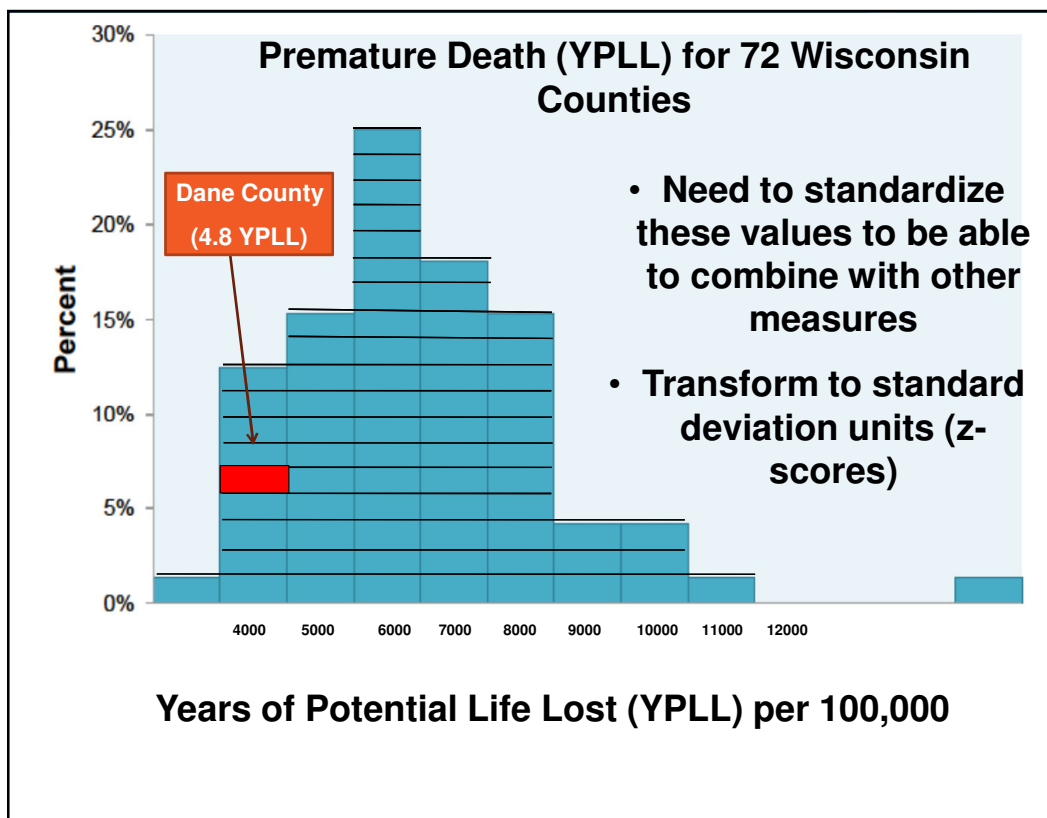
Methods: *Rankings* Calculation



Special Data Issues

Wrap-Up; Q & A

24



HEALTH OUTCOMES - RANK CALCULATION

Dane County	Value	Z-score	Weight	
Length of life (YPLL)	4800	-1.23	50%	-.61
Quality of life				-.10
-Fair/poor self- reported health	9%	-1.27	10%	-.13
-Physical un-healthy days	3.2	-0.05	10%	-.005
-Mental un-healthy days	3.0	0.06	10%	+.006
-Low birthweight	6.3%	0.15	20%	+.03

27

HEALTH OUTCOMES – RANK CALCULATION

Dane County	Value	Z-score	Weight		Rank
Length of life (YPLL)	4800	-1.23	50%	-.61	6
Quality of life				-.10	31

COMPOSITE OUTCOMES SCORE

-.71

10

28

WHAT RANKS ARE CALCULATED?

- Health Outcomes
 - Length of life
 - Quality of life
- Health Factors
 - Health behaviors
 - Clinical care
 - Social and economic factors
 - Physical environment

29

OUTLINE

County Health Rankings & Roadmaps Background

What's New for 2015?

2015 Measures

Methods: *Rankings* Calculation

Special Data Issues



Wrap-Up; Q & A

30

MISSING DATA

- ▶ Insufficient health outcomes data for ranking
 - e.g., if data are missing for premature death, county is not ranked
- ▶ Sufficient data for ranking but missing individual measures
 - State mean is assigned in place of missing value to be able to rank

31

MISSING DATA

Health Outcomes				
Length of Life				
Premature death			5,317	6,712
Quality of Life				
Poor or fair health	2%	5.12%	10%	11%
Poor physical health days	2.1	1.3-2.8	2.5	2.7
Poor mental health days	3.0	1.3-4.7	2.4	2.6
Low birthweight			6.0%	6.6%
Health Factors				
Health Behaviors				
Adult smoking	10%	7.15%	14%	18%
Adult obesity	30%	24.37%	25%	30%
Food environment index	4.8		8.7	7.7
Physical inactivity	36%	28.43%	21%	26%
Access to exercise opportunities	44%		85%	62%
Excessive drinking	14%	9.21%	10%	19%
Alcohol-impaired driving deaths	33%		14%	37%
Sexually transmitted infections			123	414
Teen births			20	38
Clinical Care				
Uninsured	13%	11.15%	11%	14%
Primary care physicians	1,042.1		1,051.1	1,329.1
Dentists	512.1		1,092.1	1,844.1
Mental health providers			46	63
Preventable hospital stays				
Diabetic screening	95%	52.100%	90%	84%
Mammography screening	10%	35.100%	71%	67%
Social & Economic Factors				
High school graduation				80%
Some college	62%		43.77%	70%
Unemployment	7.6%		4.4%	4.4%

Unranked
County –
Data Still
Available

Health Outcomes				
Length of Life				
Premature death	16,752	12,473-22,025	5,317	6,712
Quality of Life				
Poor or fair health	15%	19.20%	10%	11%
Poor physical health days	3.0	2.3-3.8	2.5	2.7
Poor mental health days	3.0	2.1-3.8	2.4	2.6
Low birthweight	6.6%	4.3-8.0%	6.0%	6.6%
Health Factors				
Health Behaviors				
Adult smoking	22%	16.28%	14%	18%
Adult obesity	38%	32.43%	25%	30%
Food environment index	2.4		8.7	7.7
Physical inactivity	30%	26.35%	21%	26%
Access to exercise opportunities	3%		85%	62%
Excessive drinking	28%	20.32%	10%	19%
Alcohol-impaired driving deaths	57%		14%	37%
Sexually transmitted infections	698		123	414
Teen births	77	60.86	20	38
Clinical Care				
Uninsured	23%	18.24%	11%	14%
Primary care physicians	2,441.1		1,051.1	1,329.1
Dentists	1,718.1		1,092.1	1,844.1
Mental health providers			521.1	871.1
Preventable hospital stays			46	63
Diabetic screening	95%	26.74%	90%	84%
Mammography screening			71%	67%
Social & Economic Factors				
High school graduation				80%
Some college	54%	39.68%	70%	66%
Unemployment	5.6%		4.4%	4.4%

Ranked
County –
Missing
Data

32

DATA RELIABILITY

- ▶ Reliability differs by measure – some more reliable (e.g., mortality) than others
- ▶ To increase reliability, we
 - Use multiple years of data
 - Truncate Z-scores at 3.0 for counties with less than 20,000 population
- ▶ To evaluate reliability of a specific measure
 - Examine sample size and margin of error (confidence interval)

33

OUTLINE

County Health Rankings & Roadmaps Background

What's New for 2015?

2015 Measures

Methods: *Rankings* Calculation

Special Data Issues

Wrap-Up; Q & A



34

UPCOMING WEBINARS

March 17

Using the *Rankings* in Your Community

April 7

County Health Rankings & Roadmaps 101 and
Website Tour

35

STAYING CONNECTED



e-Newsletter: chr@match.wisc.edu

36



**County Health
Rankings & Roadmaps**
A Healthier Nation, County by County

THANK YOU!

Amanda Jovaag, MS

County Health Rankings Data Lead

University of Wisconsin Population Health Institute

www.countyhealthrankings.org