

SCHOOL HUB FOR HEALTH

Assessment of Key Activities

	District 1	District 2	District 3	District 4	District 5
HEALTH BEHAVIORS					
Employee Wellness	LHA has explored offering CHIP scholarships to school health plan members	Weight Watchers club; employee blood pressure checks; WellWorks corporate member; CHIP scholarships have been provided to staff in the past	WellWorks memberships; wellness team		Health Clinic
Community Gardens (SE)	Schools gardens	School gardens, green house at high school	School gardens	School garden	School gardens
Joint Use Agreements (SE)	track	Green house; track		Weight room	Weight room
Healthy School Lunch Initiative (SE)	F2S	F2S	F2S	F2S, the Nutrition Group	
Health vending machine options (SE)					
School based nutrition education program (SE)/fruit and vegetable taste testing (SE)	LHK in all second grade classrooms (5 total), Meal Masters in all third	LHK in all second grade classrooms (11 total); Meal Masters in 8 third grade classrooms	LHK in all second grade classrooms (4 total); Meal Masters in all third grade classrooms (4 total)	LHK in all second grade classrooms (5 total)	LHK in all second grade classrooms (3 total)

	grade classrooms (5 total)				
School-based physical education (SS)	Elementary students have PE for 45 minutes 1x/week	Students at East have engage in PE 2x/week, students at Morrison have PE 1x/week for 30-40 minutes, The Plains and West offer PE classes	Elementary students have PE at least 2 days/week for 45 minutes to 1 hour	elementary students have physical education 2 days/week for 45 minutes	elementary students have PE (meets Ohio requirements)
CLINICAL CARE					
School Dental Program (SS)	Dental sealant program	Dental sealant program	Dental sealant program	Dental sealant program	Dental sealant program
School based health clinic	Planning phase				Health Clinic
Mental health services	Integrated services; school counselor	Integrated services; school counselor	Integrated services; school counselor	school counselor	Integrated services; school counselor
SOCIAL AND ECONOMIC FACTORS					
School-based social and emotional instruction (SS)	ACCS Outreach Workers	ACCS Outreach Workers	ACCS Outreach Workers	ACCS Outreach Workers	ACCS Outreach Workers
School Breakfast Program (SS)	USDA School Breakfast Program; occasional other breakfast (Oatmeal breakfast)	USDA School Breakfast Program	USDA School Breakfast Program	USDA School Breakfast Program	USDA School Breakfast Program
Community Arts Program (EO)					
Group-Based Parenting (SS)					

School-based violence & bullying prevention programs (SS)/youth empowerment programs (SE)		Girl Power	Girl Power		Girl Power
Big Brothers Big Sisters (SE)	BBBS programs	BBBS Bulldog Buddies			BBBS programs
Extracurricular activities for social engagement (SS)	School athletics and clubs	School athletics and clubs	School athletics and clubs	School athletics and clubs	School athletics and clubs
PHYSICAL ENVIRONMENT					
Safe Routes to School (SS)		Elementary school has an approved School Travel Plan, recently applied for infrastructure funding			Approved School Travel Plan, received infrastructure funding in 2013; construction of sidewalk connector begins summer 2016; Tomcat Trail
Smoke-free policies for indoor/outdoor areas (SE)	Smoke-free campus	Smoke-free campus	Smoke-free campus	Smoke-free campus	Smoke-free campus

What are we already doing well within each district? What do we know?

(See survey results)

Highlights:

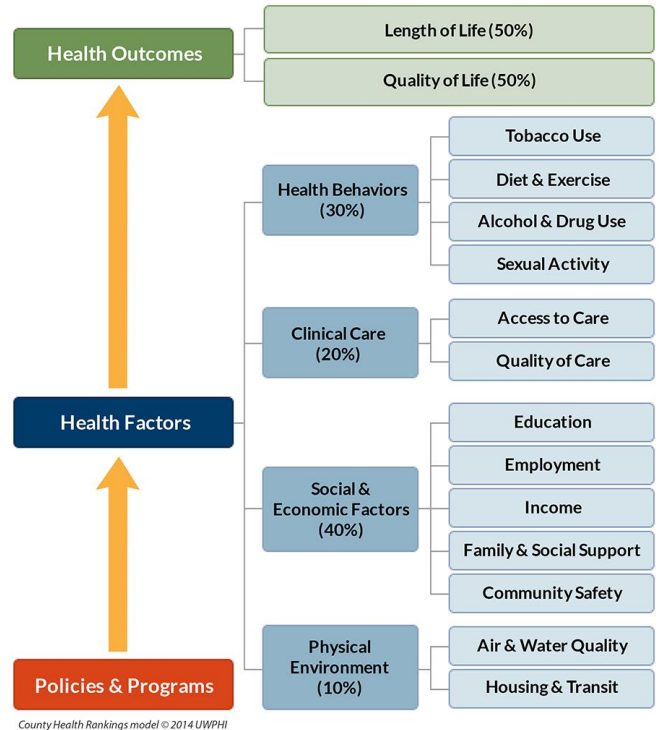
District 1 LHK, Healthy Concessions, tobacco free campus, ACCS Outreach Worker, AmeriCorps Service member, school garden, planning a school-based clinic

District 2: Administrative support for healthy initiatives, school-based food pantry, organized parent/faculty/community member school nutrition group, LHK, tobacco free campus, ACCS Outreach Worker, AmeriCorps Service member, school gardens and green house

District 3: Supportive food service for F2S, successful F2S program, school gardens, cooking club, LHK, tobacco free campus, ACCS Outreach Worker, AmeriCorps Service member

District 4: hired an outside nutrition consultant group, LHK, tobacco free campus, ACCS Outreach Worker, AmeriCorps Service member

District 5: School based health clinic, LHK, tobacco free campus, SRTS, ACCS Outreach Worker, AmeriCorps Service member



What does our model Hub of Health School District look like? What more do we want?

(See diagram)

Community schools (SE): combine academics, physical health, mental health, and social service resources for students, faculty, and families

- Comprehensive Farm to School: purchasing of local produce for school meals, LHK, and school gardens
- Comprehensive health education K-12
- Physical education K-12
- Active classrooms
- Worksite Wellness

- Mental health services for students, faculty, and families
- School-based dental program
- School-based food distribution (ex. Food pantry)
- School-based health clinic for students, faculty, and families
- Healthy concessions
- Joint use agreements (written in policy) for school facilities supporting physical activity and school gardens
- SRTS or innovative alternatives for where this is not possible (environmental barriers/more rural schools)
- Community fitness programs (SS) offered at the schools