



WEBINAR RESOURCE GUIDE

Previewing the 2025 Annual Data Release

March 11, 2025

Return to our website on March 19th to explore updated data, the new model and other exciting resources!

CHR&R tools and resources

- **Explore our website:**

[What Works for Health](#): Searchable database of evidence-informed strategies, policies, programs and systems changes. Find new strategies next week.

[Webinars](#): Live, monthly presentations showcasing equity-centered approaches and examples with a post-webinar discussion group. Available on demand.

[Narratives for Health](#): Guidelines and resources for shifting narratives and ways to support narrative change in your community.

- **Stay in touch:**

- [Subscribe to our newsletter](#)
- [Subscribe to our podcast, In Solidarity](#)
- [Follow us on Twitter \(X\)](#)
- [Like us on Facebook](#)
- [Follow us on LinkedIn](#)

The new Model of Health

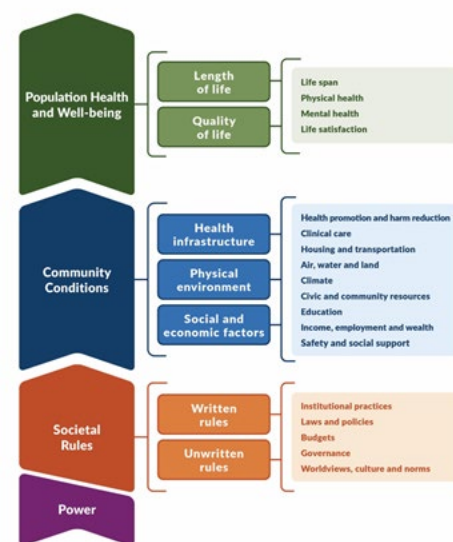
Learn about the University of Wisconsin Population Health Institute's Model of Health and how you can apply it to your work. Visit our website on or after Annual Data Release--March 19, 2025--to explore the interactive model, navigate your county and state snapshots, watch a short video, read about our updated methodology and more.

Share how you use CHR&R in your work

Robert Wood Johnson Foundation has decided to end funding for CHR&R in 2026. We are interested in documenting how you use CHR&R in your work. Sharing your stories and experiences will help us explore alternative funding to continue providing resources valuable to the field. Please [complete this brief survey](#).

Healthy Places by Design (HPbD)

[Healthy Places by Design's](#) Community Action [Model](#) was developed with insights from work supporting



University of Wisconsin Population Health Institute Model of Health © 2025



successful community health initiatives and a deep understanding of the community change process.

- **Stay in touch:**

- Follow HPbD on [LinkedIn](#)
- Subscribe to our [newsletter](#)