



County Health
Rankings & Roadmaps

Webinar

Meeting the moment: Navigating a quickly
changing public health landscape

July 15, 2025

countyhealthrankings.org



University of Wisconsin
Population Health Institute
UNIVERSITY OF WISCONSIN
SCHOOL OF MEDICINE AND PUBLIC HEALTH

Support
provided by



Robert Wood Johnson
Foundation

1



County Health
Rankings & Roadmaps



Guidelines

1
Share
successes and
lessons learned

2
Offer
resources

3
Build
knowledge

4
Listen
for multiple
perspectives

2



3

County Health Rankings & Roadmaps

Join the conversation

Question and Answer

Welcome to Q&A
Questions you ask will show up here. Only host and panelists will be able to see all questions.

Where can I find strategies to address children in poverty?

☐ Send anonymously

Webinar Chat

Me to Everyone

JL Hi Everyone, I'm James, from Madison, WI.

Zoomhost CHRR to Everyone

Hello James and welcome to today's webinar.

Who can see your messages?

To: Everyone

Your text can be seen by panelists and other attendees

4



County Health
Rankings & Roadmaps

Group agreements

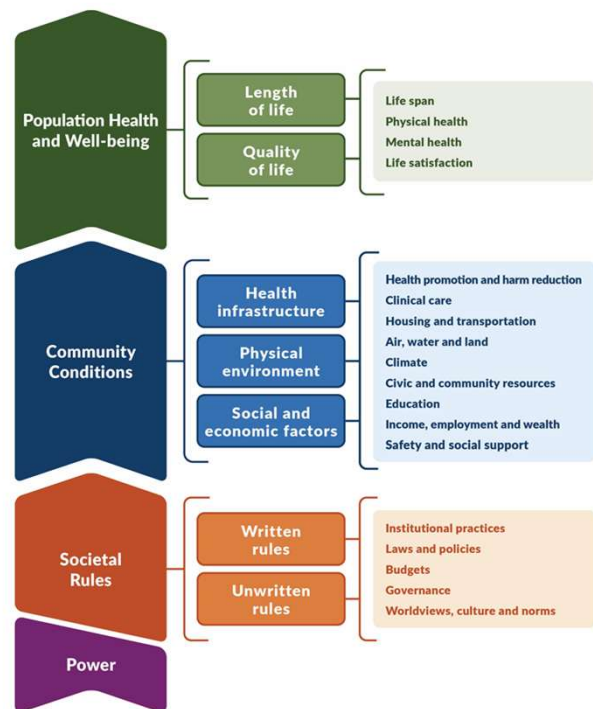
1. Listen actively
2. Participate fully
3. Speak from your experience
4. Lead with curiosity
5. Be conscious of body language
6. Expect ambiguity
7. Be accountable

5



County Health
Rankings & Roadmaps

Power is foundational to health



University of Wisconsin Population Health Institute Model of Health © 2025

6



County Health
Rankings & Roadmaps

Meeting the moment

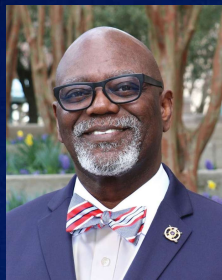
A three-part series
July 15
August 19
September 23



7



County Health
Rankings & Roadmaps



**Joining
us!**



8



County Health
Rankings & Roadmaps

Welcome



Susan Polan, Ph.D.

Associate executive director for
public affairs and advocacy
American Public Health Association

9



County Health
Rankings & Roadmaps



Discussion group

When: Following the webinar


What: Share ideas, ask questions

How: Zoom


Why: Deepen learning



10



County Health
Rankings & Roadmaps



HEALTHY
PLACES
BY DESIGN

WEBINAR RESOURCE GUIDE

Community-driven strategies to address
persistent poverty in rural areas

June 18, 2024

CHR&R Tools and Resources

- Explore our website:
 - [What Works for Health](#): Searchable database of evidence-informed strategies, policies, programs and systems changes.
 - [Webinars](#): Live, monthly presentations showcasing equity-centered approaches and examples with a post-webinar discussion group. Available on demand.
 - ["In Solidarity" Podcast](#): Conversations with some of our nation's brightest minds connecting power, place and health.
- Stay in touch:
 - [Subscribe to our newsletter](#)
 - [Subscribe to our podcast, In Solidarity](#)
 - [Follow us on Twitter \(X\)](#)
 - [Like us on Facebook](#)
 - [Follow us on LinkedIn](#)

Guest Resources

Emily Burleson, senior manager of advocacy and research, Partners for Rural Transformation
[Partners for Rural Transformation](#) works across geographies and cultures to influence policy and lead individual and community solutions to poverty.

[DreamBuild](#) is a solution to the sometimes-overwhelming process of building and financing a safe, affordable and quality-built home.

Lise Regehr, president and CEO, Thrive Allen County
[Thrive Allen County](#) provides a model for rural revitalization to harness the strengths of local residents in building healthier, more vibrant communities.

Highlighted Guidance

Check out the first webinar in this series, [Identifying the forces behind persistent poverty](#). Poverty researcher H. Luke Shaeffer shares strategies rooted in community expertise and cultural traditions to improve wealth and engagement in rural areas.


Learn more about the evidence behind [Community Development Financial Institutions](#).

Explore measures of poverty in your community:


- [Children in Poverty](#)
- [Income Inequality](#)
- [Living Wage](#)

Learn more from Partners for Rural Transformation:

- [Stories of rural America](#)
- [How community development financial institutions drive economic opportunity](#)



University of Wisconsin
Population Health Institute
SCHOOL OF MEDICINE AND PUBLIC HEALTH



Support
provided by
Robert Wood Johnson
Foundation

Resource guide

Coming to your inbox soon

11

About APHA

Our Mission

- Build public health capacity and promote effective policy and practice

Our Vision

- Optimal, equitable health and well-being for all



<https://www.apha.org/membership>

12

APHA 2025

ANNUAL MEETING & EXPO

Making the Public's Health a National Priority

Washington, D.C. | November 2-5, 2025

Research has shown that public health efforts to prevent disease are more cost effective - and humane - than treating chronic health conditions, so now is the time to invest in our nation's health. Health is a human right; let's make it a national priority.

[Register](#)



13



13

1870s: The Beginning of an Association



American Public Health Association

In 1872, the American Public Health Association was launched under the leadership of Dr. Stephen Smith, a physician and a commissioner of New York City's Board of Health. APHA's membership consisted of "persons connected with existing health organizations and citizens interested in sanitation." APHA's rise to

prominence was apparent in the enthusiastic and detailed responses it received to its request for information on local sanitary conditions. These responses allowed the Association to publish a report with statistics on water supplies, drainage and sewage, streets and public grounds, habitations, garbage and excreta and

slaughterhouses. An even clearer indication of the Association's status came during the campaign to create a National Health Board as a massive yellow fever epidemic threatened the country in 1878.

1872

The American Public Health Association is founded. Dues are \$5.

1873

APHA holds its first Annual Meeting in Cincinnati and publishes *Public Health: Reports and Papers of the American Public Health Association* the same year.

1873

Resolution promoting the creation of a National Sanitary Bureau.

1875

Develops systematic surveys to assess sanitary conditions in major cities.

1875

Resolution to petition Congress for a uniform national system of registry for deaths, marriages and births.

1877

Resolves that every medical school in the country should establish a chair for medicine and public health.

1879

The organization reaches nearly 600 members, including two women.

APHA sends a delegation to Havana which confirms the endemicity of yellow fever in Cuba.

1879

The National Board of Health is established under a bill promoted by the American Public Health Association.

● Milestones ● Advocacy ● Sections and Caucuses ● Affiliates

14



14

What do we know?

- Biggest threat to health in the US is preventable disease
- Access to care = Health ~~h~~
- Root causes of these diseases are linked to social determinants and conditions that shape opportunity to attain good health



15

We all know this – Health Is About More Than Healthcare

Figure 2

Social Determinants of Health

Economic Stability	Neighborhood and Physical Environment	Education	Food	Community and Social Context	Health Care System
Employment	Housing	Literacy	Hunger	Social integration	Health coverage
Income	Transportation	Language	Access to healthy options	Support systems	Provider availability
Expenses	Safety	Early childhood education		Community engagement	Provider linguistic and cultural competency
Debt	Parks	Vocational training		Discrimination	Quality of care
Medical bills	Playgrounds	Higher education			
Support	Walkability				
Health Outcomes Mortality, Morbidity, Life Expectancy, Health Care Expenditures, Health Status, Functional Limitations					



LA

16

So....what's happening?



- Clawbacks
- Lawsuits
- Agency closures
- Reorganizations
- RIFs and layoffs
- Budget reconciliation
- Questioning Science

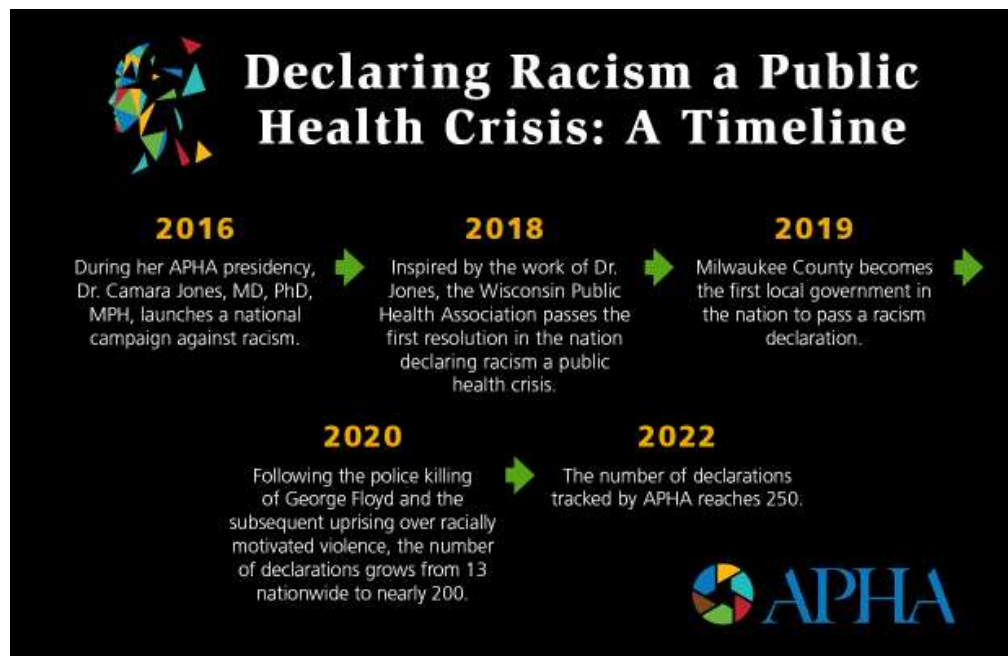
17



17



18



19

Case	Details	Status
Nat'l Council of Nonprofits v. OMB	The Office of Management and Budget (OMB) ordered a sudden pause on all federal funding programs, which disrupted billions of dollars in assistance to nonprofits and public services.	A federal court blocked OMB's order, saying it likely violated the law because OMB did not consider the severe harm this funding freeze caused. Ultimately, the court criticized the OMB for implementing the funding freeze with less than twenty-four hours' notice and for failing to take a measured approach to address wasteful spending

20

20

Case	Details	Status
APHA v. NIH	<p>APHA is the lead plaintiff in a case against NIH, claiming it violated federal rules by making policy changes without following required public input processes.</p> <p>The lawsuit argues that the changes harm marginalized communities and violate constitutional rights, including free speech and equal protection.</p>	<p>The court ruled that the challenged directives and resulting grant terminations issued by the National Institutes of Health (NIH) and the U.S. Department of Health & Human Services (HHS) were arbitrary and capricious, thereby violating the Administrative Procedure Act. Specifically, the court declared these directives to be final agency actions that were unlawful under the statute. The court entered a partial final judgment under Federal Rule of Civil Procedure 54(b), finding no just reason to delay entry of judgment on this claim</p>

21

21

Case	Details	Status
AFGE v Trump	<p>Suing Donald Trump, United States federal executive departments, and Trump's second cabinet. More than 30 plaintiffs including labor unions, non-profit organizations, and local governments sought to prevent the Trump administration from instituting mass layoffs and closing programs.</p>	<p>Upheld in district court and case is proceeding but SCOTUS granted emergency request to stay the injunction. The court's decision permits the administration to continue with plans to restructure federal agencies despite the absence of the required congressional authorization. The court specifically did not weigh in on the legality of the agency plans themselves.</p>

22

22

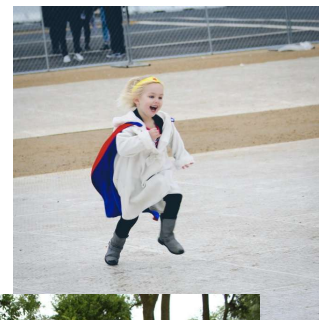
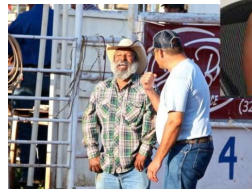
Case	Details	Status
AAP v RFK Jr	Suing HHS and Secretary Kennedy for acting arbitrarily and capriciously when he unilaterally changed Covid-19 vaccine recommendations for children and pregnant people. The lawsuit asks the court to declare unlawful and set aside the Secretarial Directive on Pediatric Covid-19 Vaccines for Children Less Than 18 Years of Age and Pregnant Women. We are also asking the court to order the Secretary to reinstate	Case filed on 7/7/25 Currently looking for additional plaintiffs

23

23

Health is a state of complete physical, mental, and social well-being and not merely the absence of disease or infirmity.

- WHO definition



24

24

Speak For Health

Speak for Health is how APHA members stand up for public health

APHA believes public health professionals deserve a stronger voice in public health advocacy. Together, we can change the narrative and turn the tide. [#SpeakForHealth](#)

APHA is the leading voice for public health in Washington. The policies we advance are based in science, research and member-led processes. Join us and Speak for Health — for today and future generations.

[Donate](#)

How can you #SpeakForHealth?

- [Donate to Speak for Health](#) and take action to defend evidence-based policies and protect the systems that keep people healthy.
- Use our [state fact sheets](#) (PDF) to advocate locally.
- Read about [APHA's 2025 advocacy priorities](#) (PDF).
- [Meet](#) with your members of Congress or their staff.
- Attend a public forum or town hall and [ask a question](#). Call the district offices of your [senators](#) and [representative](#) to request a list of events near you. Review these [tips for speaking at a town hall or public meeting](#) (PDF).
- Submit an op-ed to your local paper. We have tips for writing [op-eds](#) (PDF). You can also email speakforhealth@apha.org if you would like to use an op-ed template on gun violence prevention, climate change or public health funding.
- Use [Facebook](#) or [X](#) to engage your members of Congress.
- Send an [action alert](#) message to your members of Congress, or call your members of Congress and use the action alert message as a phone script.

And share these images on social media to help us spread the word:



25

[HOME](#) / [POLICY BRIEFS AND ADVOCACY](#) / [ACTION ALERTS](#)

Action Alerts

Your voice makes a difference in the policymaking process. Get involved and help shape the national debate on public health issues. Take action today!

- [Urge your members of Congress to oppose the House reconciliation bill and its public health cuts](#)
- [Urge your members of Congress to support strong public health funding in the FY 2026 appropriations process](#)
- [Urge your members of Congress to oppose efforts in Congress to rollback climate and clean energy laws](#)
- [Urge your members of Congress to oppose the Trump administration's efforts to cut our nation's public health workforce](#)

[APHA Action Alerts](#)

26



26



27 APHA

27

QUESTIONS?



Contact information

Susan Polan, PhD
Associate Executive Director,
Public Affairs and Advocacy
Susan.polan@apha.org
202.777.2520

28

APHA

28



County Health
Rankings & Roadmaps

Explore strategies

- ✓ Civic health curated strategy list
- ✓ Social media for civic participation



29



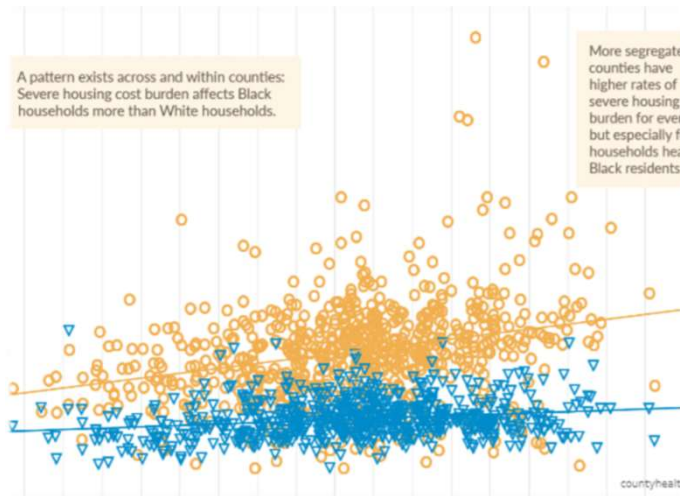
County Health
Rankings & Roadmaps

Questions?



30

Data viz challenge



Submissions due August 1

- relevance to the structural determinants of health
- clarity
- design
- creativity

31

Upcoming webinar:

August 19, 2025

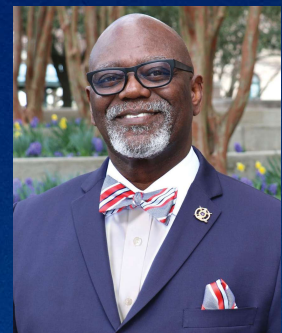
Meeting the
moment: From
data to impact



Dr. Tami Gouveia
Director, Center for
Innovation in Social
Work & Health
Boston University



Dr. Christine Muganda
Data and analytics
team leader
CHRR



Hon. George Dunlap
Second vice president
National Association of
Counties

32



County Health
Rankings & Roadmaps

**Click on
survey in
the chat**



33



County Health
Rankings & Roadmaps



Discussion group

When: Following the webinar

What: Share ideas, ask questions

How: Zoom

Why: Deepen learning



34



County Health
Rankings & Roadmaps

**Stay
connected**



Sign up for our newsletter
CountyHealthRankings.org/subscribe



Follow [@CHRankings](https://twitter.com/CHRankings)



Facebook.com/CountyHealthRankings



Linkedin.com/company/county-health-rankings-roadmaps