



County Health  
Rankings & Roadmaps

# Webinar

Immigration policy and health: Building  
understanding and solidarity

January 20, 2026

[countyhealthrankings.org](http://countyhealthrankings.org)



University of Wisconsin  
Population Health Institute  
UNIVERSITY OF WISCONSIN  
SCHOOL OF MEDICINE AND PUBLIC HEALTH

Support  
provided by



Robert Wood Johnson  
Foundation

1



County Health  
Rankings & Roadmaps



## Guidelines

**1**  
**Share**  
successes and  
lessons learned

**2**  
**Offer**  
resources

**3**  
**Build**  
knowledge

**4**  
**Listen**  
for multiple  
perspectives

2



County Health  
Rankings & Roadmaps



## Disclosures

- Views do not represent the University of Wisconsin Madison or the Robert Wood Johnson Foundation.
- Expertise of a CHR&R team of 35+ members is reflected and highly valued.
- Funding support from RWJF is appreciated.

3



County Health  
Rankings & Roadmaps

**We value**



University of Wisconsin  
Population Health Institute  
UNIVERSITY OF WISCONSIN  
SCHOOL OF MEDICINE AND PUBLIC HEALTH

Collaboration

Innovation

Integrity

Courage

Inclusion

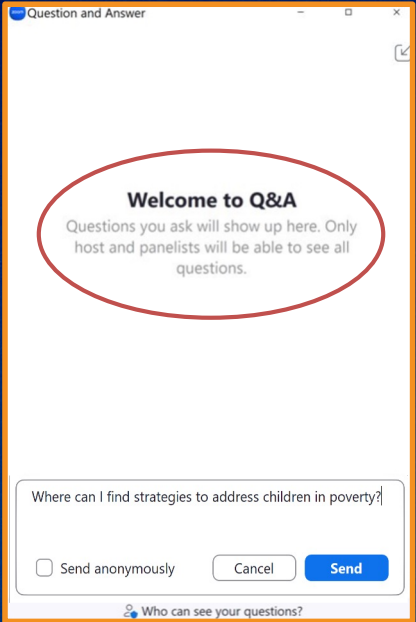
Excellence

4



**County Health Rankings & Roadmaps**

# Join the conversation

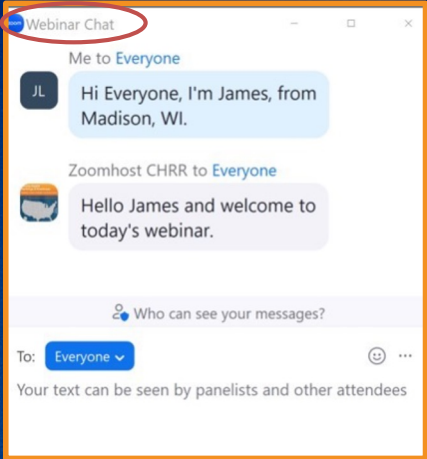


**Welcome to Q&A**  
Questions you ask will show up here. Only host and panelists will be able to see all questions.

Where can I find strategies to address children in poverty?

☐ Send anonymously

Who can see your questions?



**Webinar Chat**

Me to Everyone

JL Hi Everyone, I'm James, from Madison, WI.

Zoomhost CHRR to Everyone

Hello James and welcome to today's webinar.

Who can see your messages?

To: Everyone

Your text can be seen by panelists and other attendees

5

**County Health Rankings & Roadmaps**

# Group agreements

1. Listen actively
2. Participate fully
3. Speak from your experience
4. Lead with curiosity
5. Be conscious of body language
6. Expect ambiguity
7. Be accountable

6



County Health  
Rankings & Roadmaps

# Understanding Immigration Policy as a Public Health Issue

- Policies, systems, and power shape health
- Immigration policy is a key public health issue
- Elevating lived experience and solidarity matter



Photo by [Metin Ozer](#) on [Unsplash](#)

7



County Health  
Rankings & Roadmaps

## Welcome



Elizabeth Aranda

Im/migrant Well-Being  
Research Center



Ivy Suriyopas

Grantmakers Concerned with Immigrants and  
Refugees

8





County Health  
Rankings & Roadmaps



## Discussion group

**When:** Following the webinar

**What:** Share ideas, ask questions

**How:** Zoom

**Why:** Deepen learning



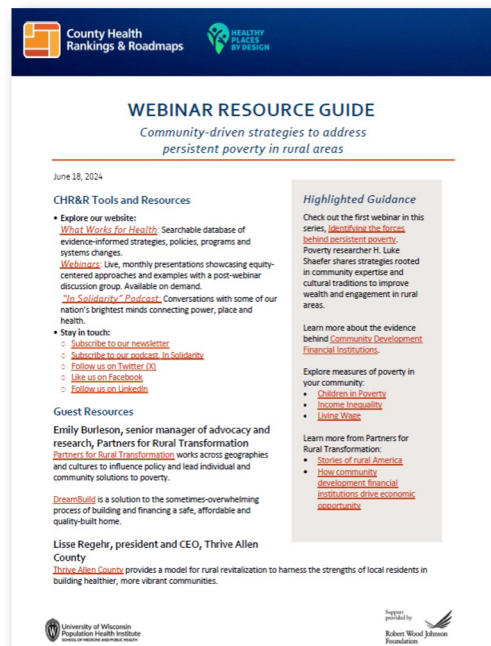
9



County Health  
Rankings & Roadmaps

## Resource guide

Coming to your inbox soon



10

## Im/migrant Well-Being Research Center

- Mission: to conduct high-impact research and translate it for policy-makers and the public
- More recently, our mission has pivoted to document current realities shaping im/migrant well-being
- Podcast, Im/migrant Lives
- <https://rss.com/podcasts/immigrant-lives/>

12

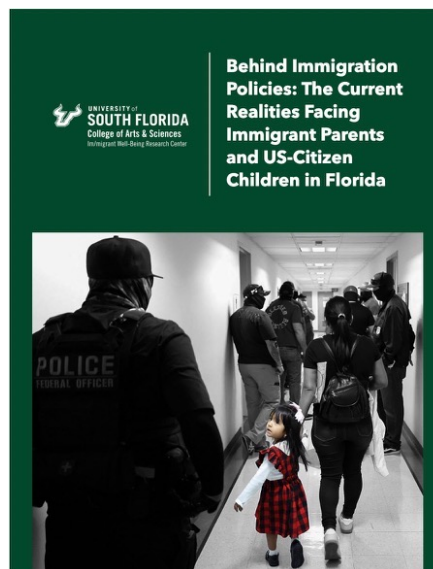
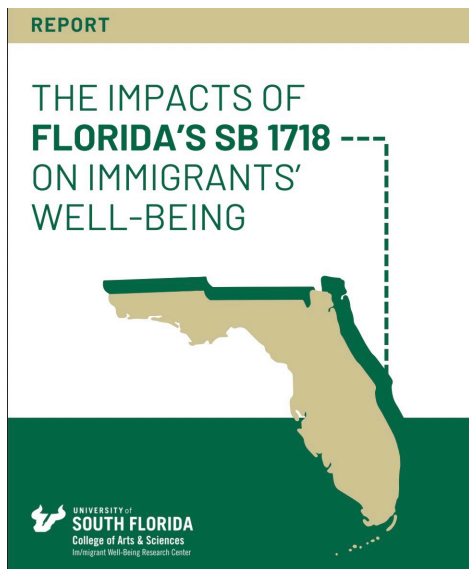
## Legal status and health

- In-between and temporal statuses affect immigrants' physical and mental health
  - Physiological effects: cortisol dysregulation, sleep disruption, anxiety, and long-term health risks
  - Fear of detention, deportation, and family separation affects population-level stress

13



## Lived experiences as source of public health data



14

## Patterns across immigrant communities

- Patterns differ by region/state/city
- Common themes:
  - Immigrants stopped going to work or took jobs closer to home
  - Avoid driving
  - Housing instability
  - Fear of family separation and social isolation
  - Avoid hospitals and doctors' offices
  - Avoid law enforcement
  - Stress passed along to US-citizen children

15

## How enforcement affects children and youth

- Children internalized fears
  - Hypervigilance
  - Anxiety
  - Loss of appetite
  - Concern for classmates
  - Lack of focus in school
- Effects of family's social isolation
- Older children took on adult roles and responsibilities
  - Relinquished aspirations such as attending college

16

## What can public health practitioners do?

- Promote trauma-informed care and clear confidentiality policies
- Evaluate policies (e.g., remove unnecessary ID or documentation barriers in clinical settings)
- Strengthen relationships with trusted community messengers and immigrant-serving organizations

17



## Resources

- Im/migrant Well-Being Research Center reports: the latest can be found at <https://usf.to/IWRCReport2025>
- Scholarship on legal status, health, and mixed-status families by Anthropologist Heide Castañeda
  - Migration and Health: Critical Perspectives* (2023)
  - Borders of Belonging: Struggle and Solidarity in Mixed-Status Immigrant Families* (2018)
- For practitioner guides on trauma-informed care, see National Child Traumatic Stress Network <https://www.nctsn.org/>

18



Grantmakers Concerned with  
Immigrants and Refugees

### County Health Rankings & Roadmaps University of Wisconsin Population Health Institute

Tuesday, January 20, 2026



*Photo by tumsasedgars on iStock, is licensed under standard license.*

19

## Ivy O. Suriyopas

Vice President of Programs

Grantmakers Concerned with Immigrants and Refugees

Ivy leads GCIR's program and policy strategy and development, funder education and engagement, and funder mobilizing and organizing. Previously, she was a program officer at Open Society Foundations, where she focused on immigrant and refugee justice, managing a multimillion-dollar portfolio and developing a strategy challenging the systems rooted in the racialized treatment of immigrants throughout US history. Prior to joining OSF, she was an attorney and director of the Anti-Trafficking Initiative at the Asian American Legal Defense and Education Fund, working at the intersection of migrants, workers, and women's rights, providing legal representation and advocating for policy changes informed by the lived experiences of her clients.

Speaker



20

## The Nation's Only Immigrant-Focused Philanthropy-Mobilizing Organization



- **Mission** We mobilize philanthropy to advance immigrant justice and belonging
- **Vision** GCIR envisions a society in which everyone thrives no matter where they are born
- **Pillars of GCIR's work**
  - **Push philanthropic practice** to move beyond incremental change and take bold action for the greatest possible impact on immigrant and refugee communities in the long term
  - **Create a political home for funders** prioritizing immigrant rights and justice so they can strategize and coordinate in a generative environment of similarly oriented funding partners
  - **Provide a platform for movement leaders** to amplify their voices and increase their impact with a particular focus on historically marginalized communities
  - **Facilitate public-private partnerships** to advance immigrant justice at the federal, state, and local levels

21



## Values and Guiding Principles

.....



### Values and Guiding Principles



#### Love

We extend grace, compassion, and generosity to ourselves and each other.



#### Solidarity

We center those affected by systems of oppression and work toward our mutual freedom.



#### Dignity

We center self determination, justice, and healing in our relationships.



#### Power

We promote the ability of the immigrant and refugee justice movement to create, build, and utilize their agency.



#### Abundance

We affirm that there is enough for everyone to thrive and imagine a future of collective liberation.

22

## GCIR MEMBERS

.....



**Thank you to GCIR's 120+ members.**

With your membership dues, we can continue to:

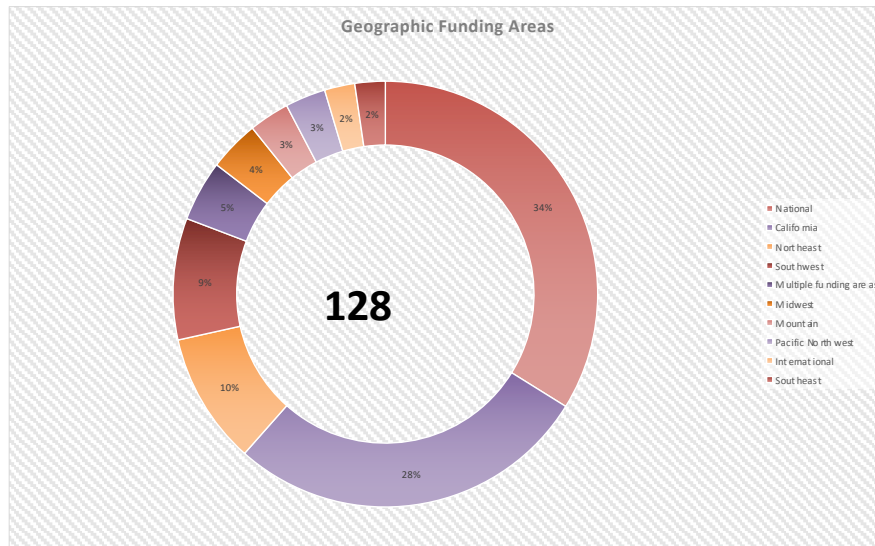
- **Keep philanthropy up to date** on the latest developments
- **Mobilize timely and strategic philanthropic responses**
- **Catalyze high-impact grantmaking** to bring about long-term systemic change

Funders interested in becoming members, please visit

<https://www.gcir.org/membership>

23

## GCIR Membership by Geographic Focus



24

## The People and the Rule of Law



### 'Citizenship won't save you': Free speech advocates say student arrests should worry all

APRIL 8, 2025 - 5:00 AM ET  
HEARD ON MORNING EDITION

By Leila Fadel, Taylor Haney, Arezou Rezvani, Kyle Gallego-Mackie



Protesters attend a demonstration in support of Palestinian activist Mahmoud Khalil in New York City on March 10. (AP Wirephoto)



### Immigration arrests violated the Fourth Amendment, Chicago lawyers argue in court

Attorneys accused two government agencies of arresting 25 people in the Midwest without warrants and probable cause in federal court on Friday.

By Adriana Cardenas-Wingard | Jan 30, 2025, 4:21 pm EST



Michelle Garcia, Deputy Legal Director of the ACLU of Illinois, speaks during a press conference following a hearing at the U.S. District Court in Chicago on January 30, 2025. (AP Wirephoto)

POLITICO



### Behind Trump's push to erode immigrant due process rights

In his first 100 days, Donald Trump has attacked due process rights in the immigration system, which could lead to more permanent consequences than his first term.

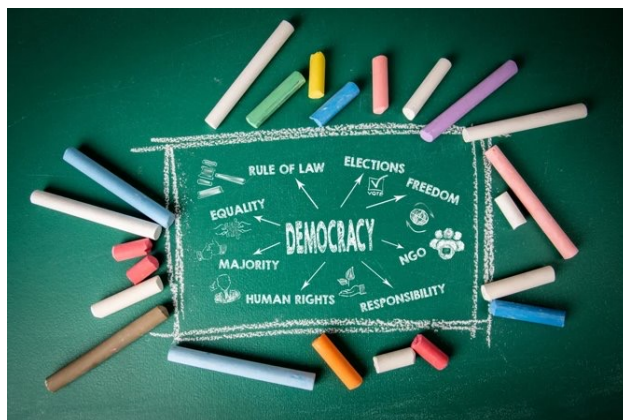


A person holds a sign with a photo of Kilmar Abrego Garcia as people take part in a protest organized to 'Protect Migrants, Protect the Planet' on April 19, 2025, in New York City. (Adam Gray/Getty Images)

25



## Immigrants as the Tip of the Spear in Confronting Authoritarianism



- **Anti-Authoritarian Funder Strategy Session**, November
- **Anti-Authoritarian Webinar Series Funder Lessons & Recommendations**, November
- **Three-Part Anti-Authoritarian Funder Learning Series**, August-October

26

## Values and Guiding Principles



- **Belonging** Everyone has the right to live in safety and dignity, regardless of where they were born
- **Shared Prosperity** We are interconnected with all members of our communities. When immigrants thrive, our whole community prospers
- **Mutual Responsibility** Interdependence is a strength, and shared challenges require collective solutions
- **Care** Systems should promote human well-being, not just efficiency or control
- **Abundance** Imagine a shared future that is better for all. There are enough resources for everyone

27

## Challenges to Practicing Solidarity



- **Aversion to risk** Fear of retaliation and retribution
- **Scarcity mindset** Concerns about insufficient resources
- **Inability to recognize the problem** This is beyond party politics and reflects genuine danger to our democracy

29

## Health-Related Impacts



- **Ability of households to pay for basic necessities** Families are losing income-earners, people are losing work authorization, and people fear living their lives
- **Impact on mental health** In addition to the already-present trauma for many migrants, living in liminal status or the threat of being pushed into liminal status is generating fear and instability
- **Food (in)security** Increased enforcement is disrupting the food chain
- **(Un)affordable housing** Targeting of low-paid workers is stifling access to affordable housing, which was already in short supply
- **Impact on care economy** Escalated immigration crackdowns are keeping care workers from working
- **HR 1 will shift the cost burden to states** Stricter work requirements and removal of access to immigrants
- **Loss in tax revenue** Mass deportations of immigrants impact a major source of tax revenue

30

## Other Impacts



- **People fear leaving their homes.** They are not going to work, sending their children to school, attending medical appointments, shopping for groceries
- **Law enforcement's time and capacity diverted.** The shift in priorities to targeting immigrant communities is making participation in public life more difficult, impacting voting, exercises in free speech and assembly, and fomenting distrust of public systems
- **Constitutional protections are ignored.** Due process, right to assemble, protection against unreasonable search and seizure, the disregard for checks and balances, the loss of rule of law, and so on threaten engagement in public life
- **Chilling of speech.** The targeting of students, academia, and civil society actors has led to self-censorship and fear of expressing dissent
- **No longer a model.** The State is terrorizing children in schools and neighbors in our community

31

## Recommendations for Philanthropic Action



- Provide **flexible, long-term, general operating support** grants
- **Reduce barriers** to entry, and minimize reporting burdens
- Grant **beyond the five percent minimum**, and ensure investment strategies align with grantmaking goals
- Balance between national organizations and state/local efforts, with intentional strategies supporting **smaller, grassroots, impacted-led groups**
- Build **authentic, supportive relationships with grantees**, including exploring participatory grantmaking models and other trust-based strategies
- Leverage the **foundation's voice and influence** through communications and advocacy
- **Fund collaboratively** with colleague institutions through aligned or pooled grantmaking approaches

32



## Recommendations for Immediate Action



- **Move money now**, including drawing down endowments
- While general support remains the gold standard, issue project-specific grants focused on **protective strategies**, such as physical and digital safety measures, mutual aid and community defense, legal support and litigation, and wellness and sustainability
- Grant **medium- and long-term strategies**, such as addressing sector defense and stability, local organizing and power building, and narrative and culture change work
- Issue grants to organizations led by and for immigrants, LGBTQ, women, BIPOC, disabled, and other **communities that bear the brunt of destructive actions of autocratic governments**
- Strive for **deep, accountable relationships with frontline groups**, including supporting those who stand up and are criminalized as a result
- **Do not comply in advance**, and determine your red lines now and your plan for responding if those lines are crossed

33

## Recommendations for Public Health Departments and Practitioners



- **Sensitive locations protocols** Hospitals and health facilities, schools, and houses of worship historically considered safe spaces
- **HIPAA and private patient information.** Preserving the integrity of the information about the patient and/or their families is critical to their care
- **Licensure** The pandemic demonstrated that we have the ability to make licensing more accessible to respond to essential needs in service of public health
- **Children in immigrant families** Immigrants are younger than US-born populations, and their children are an integral part of our communities
- **Patients that are isolating or isolated** Support patients and their families who are not able to seek medical assistance
- **Layers of mental health and trauma.** Address the multiple levels of mental health challenges immigrants and their families are facing through every leg of their journey

34

## GCIR Programs



- December 17, [Special Funder Briefing: Responding to Attacks on Afghans, Somalis, and the Immigration System](#)
- January 22, [DACA at a Crossroads: Legal Landscape & Impact on AANHPI Immigrant Communities](#)
- October 20, [GCIR National Convening](#)

Visit our new [website](#)! You can see our '[Upcoming Programs](#)' by clicking on the drop-down menu for '[Learning + Action Center](#).'

35

## GCIR Publications



- [GCIR Anti-Authoritarian Webinar Series: Funder Lessons & Recommendations](#) (November 6, 2025)
- [100 Days In: A Roadmap for Funding Migrant Justice](#) (May 19, 2025)
- [Democracy Under Fire, Communities Under Attack: Immigration Policy in Trump 2.0](#) (May 8, 2025)
- [Destination Detroit: A Timeline of Black, African, Arab, Middle Eastern, Muslim, and South Asian Migration](#) (October 1, 2024)
- [Timeline: US Intervention and Modern Migration in the Americas](#) (September 1, 2024)
- [Timeline: Citizenship in the United States, 1781-Present](#) (December 4, 2023)

You can see our '[Resource Library](#)' and Timelines (check 'Timeline' under 'Resource Type') by clicking on the drop-down menu for '[Learning + Action Center](#).'

36

## GCIR Perspectives

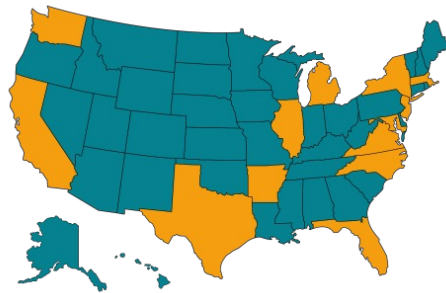


- [Amplify Series: Arkansas United Leverages Power Through Immigrant Leadership and Co-Governance](#) (November 6, 2025)
- [Amplify: We the People Michigan's Maria Ibarra-Frayre on the Power of Organizing and Storytelling](#) (March 27, 2025)
- [What is 287\(g\)? Immigrant justice experts break down this consequential program](#) (October 2, 2025)
- [Finding Direction Through Immigrant Justice and Philanthropy](#) (September 4, 2025)
- ['What are the risks of not showing up?' Members of GCIR's FOTH 2025 delegation share their reflections](#) (August 13, 2025)

You can see our '[Movement Voices](#)' or '[GCIR Blog](#)' by clicking on the drop-down menu for '[Viewpoints](#).'

37

## State and Local Framework



We are deepening, revitalizing, and building philanthropic and movement capacity in California, Washington, Michigan, Illinois, Arkansas, Texas, Boston metro area, New York, New Jersey, Washington DC metro area, North Carolina, and Florida.

You can click on '[GCIR's State and Local Framework](#)' on the '[Geographies](#)' page by clicking on the drop-down menu for '[Current Initiatives](#).'

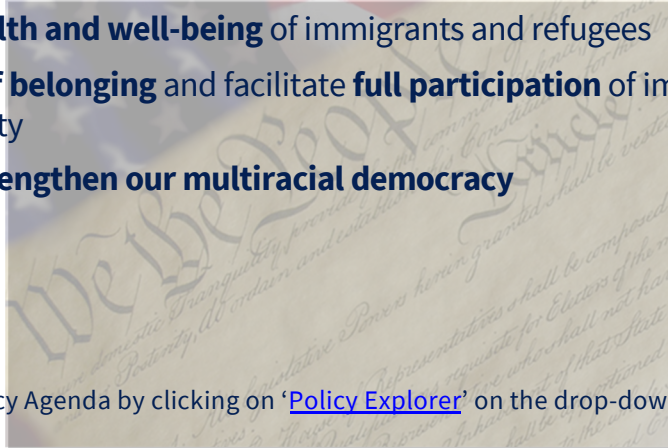
38



## Policy Agenda



- Promote the **protection and safety** of immigrants and refugees
- Advance the **health and well-being** of immigrants and refugees
- Foster a **sense of belonging** and facilitate **full participation** of immigrants and refugees in society
- Embrace and **strengthen our multiracial democracy**



You can see GCIR's Policy Agenda by clicking on '[Policy Explorer](#)' on the drop-down menu of '[Learning + Action Center](#).'

This Photo by Unknown Author is licensed under [CC BY-SA-NC](#)

39

## Messaging Toolkit



- Access to healthcare is a universal value
- Healthy families make healthy communities
- When immigrants avoid care out of fear, everyone's health is at risk

### Sample language:

Healthy families equals healthy communities

We value safety and dignity for all in our community



We help create opportunity and provide stability

We respect human potential and contributions

We care for our friends and neighbors

40

## Contact Us



[programs@gcir.org](mailto:programs@gcir.org)



<https://www.linkedin.com/company/grantmakers>



<https://www.gcir.org/>

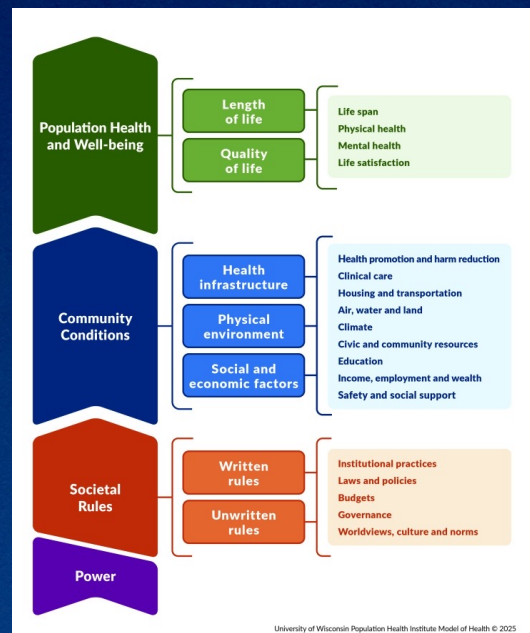
41



County Health  
Rankings & Roadmaps

## CHR&R's related resources

- Power and rules
- Housing and income
- Social connectedness



42



County Health  
Rankings & Roadmaps



## What Works for Health

[countyhealthrankings.org/whatworks](https://countyhealthrankings.org/whatworks)



Evi: Your  
personal What  
Works for  
Health guide

43



County Health  
Rankings & Roadmaps

## Questions?



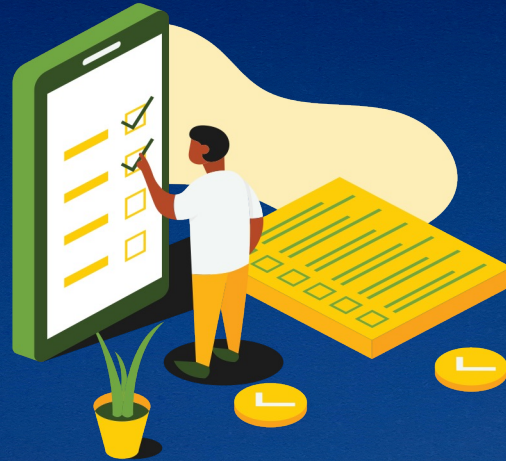
44





County Health  
Rankings & Roadmaps

**Click on  
survey in  
the chat**



45



County Health  
Rankings & Roadmaps

## **Upcoming webinar:**

February 17, 2026

**Improve Community  
Health by  
Strengthening Social  
Connections**



Risa Wilkerson  
Healthy Places by Design



Joanne Lee  
Healthy Places by Design

46



County Health  
Rankings & Roadmaps



## Discussion group

**When:** Following the webinar

**What:** Share ideas, ask questions

**How:** Zoom

**Why:** Deepen learning



47



County Health  
Rankings & Roadmaps

## Webinar

Thank You!

[countyhealthrankings.org](http://countyhealthrankings.org)



University of Wisconsin  
Population Health Institute  
UNIVERSITY OF WISCONSIN  
SCHOOL OF MEDICINE AND PUBLIC HEALTH

Support  
provided by



Robert Wood Johnson  
Foundation

48





County Health  
Rankings & Roadmaps

**Stay  
connected**



Sign up for our newsletter  
[CountyHealthRankings.org/subscribe](https://CountyHealthRankings.org/subscribe)



Follow [@CHRankings](https://twitter.com/CHRankings)



[Facebook.com/CountyHealthRankings](https://Facebook.com/CountyHealthRankings)



[Linkedin.com/company/county-health-rankings-roadmaps](https://Linkedin.com/company/county-health-rankings-roadmaps)