



County Health
Rankings & Roadmaps

Webinar

Meeting the moment: From data to impact

August 19, 2025

countyhealthrankings.org



University of Wisconsin
Population Health Institute
UNIVERSITY OF WISCONSIN
SCHOOL OF MEDICINE AND PUBLIC HEALTH

Support
provided by



Robert Wood Johnson
Foundation

1



County Health
Rankings & Roadmaps



Guidelines

1
Share
successes and
lessons learned

2
Offer
resources

3
Build
knowledge

4
Listen
for multiple
perspectives

2



3

County Health Rankings & Roadmaps

Join the conversation

Question and Answer

Welcome to Q&A
Questions you ask will show up here. Only host and panelists will be able to see all questions.

Where can I find strategies to address children in poverty?

☐ Send anonymously

Webinar Chat

Me to Everyone

JL: Hi Everyone, I'm James, from Madison, WI.

Zoomhost CHRR to Everyone: Hello James and welcome to today's webinar.

Who can see your messages?

To: Everyone

Your text can be seen by panelists and other attendees

4



County Health
Rankings & Roadmaps

Group agreements

1. Listen actively
2. Participate fully
3. Speak from your experience
4. Lead with curiosity
5. Be conscious of body language
6. Expect ambiguity
7. Be accountable

5



County Health
Rankings & Roadmaps

Meeting the moment

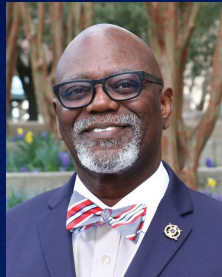
A three-part series
July 15
August 19
September 23



6



County Health
Rankings & Roadmaps



**Joining
us!**



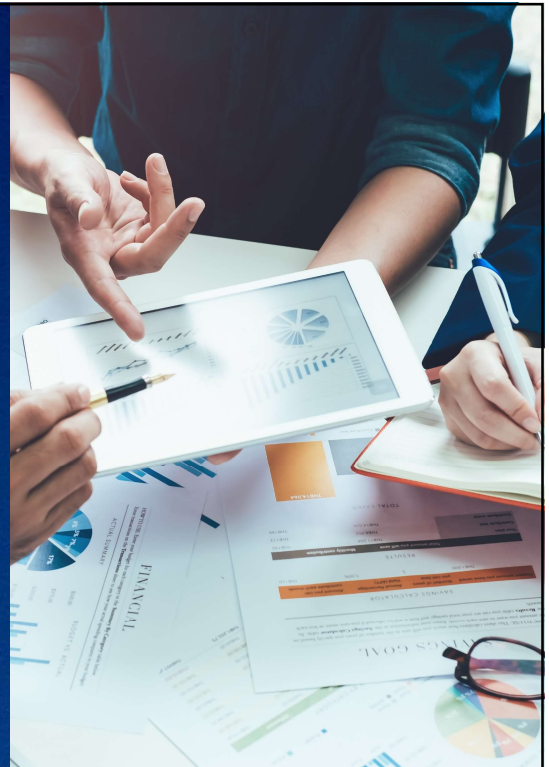
7



County Health
Rankings & Roadmaps

Why data?

- Track disease spread
- Understand risk factors and who is impacted
- Inform policy decisions



8



County Health
Rankings & Roadmaps

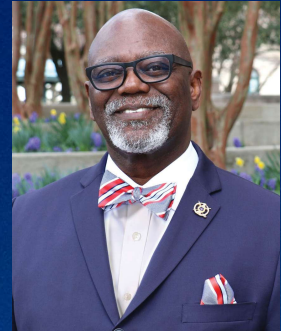
Welcome



Dr. Tami Gouveia
Director, Center for
Innovation in Social
Work & Health
Boston University



Dr. Christine
Muganda
Data and analytics team
leader
CHRR



Hon. George Dunlap
Second vice president
National Association of
Counties

9



County Health
Rankings & Roadmaps



Discussion group

When: Following the webinar


What: Share ideas, ask questions

How: Zoom


Why: Deepen learning



10



County Health
Rankings & Roadmaps



HEALTHY
PLACES
BY DESIGN

WEBINAR RESOURCE GUIDE

Community-driven strategies to address
persistent poverty in rural areas

June 18, 2024

CHR&R Tools and Resources

- Explore our website:
 - [What Works for Health](#): Searchable database of evidence-informed strategies, policies, programs and systems changes.
 - [Webinars](#): Live, monthly presentations showcasing equity-centered approaches and examples with a post-webinar discussion group. Available on demand.
 - ["In Solidarity" Podcast](#): Conversations with some of our nation's brightest minds connecting power, place and health.
- Stay in touch:
 - [Subscribe to our newsletter](#)
 - [Subscribe to our podcast, In Solidarity](#)
 - [Follow us on Twitter \(X\)](#)
 - [Like us on Facebook](#)
 - [Follow us on LinkedIn](#)

Guest Resources

Emily Burleson, senior manager of advocacy and research, Partners for Rural Transformation
[Partners for Rural Transformation](#) works across geographies and cultures to influence policy and lead individual and community solutions to poverty.

[DreamBuild](#) is a solution to the sometimes-overwhelming process of building and financing a safe, affordable and quality-built home.

Lise Regehr, president and CEO, Thrive Allen County
[Thrive Allen County](#) provides a model for rural revitalization to harness the strengths of local residents in building healthier, more vibrant communities.

Highlighted Guidance

Check out the first webinar in this series, [Identifying the Forces behind Persistent Poverty](#). Poverty researcher H. Luke Shaeffer shares strategies rooted in community expertise and cultural traditions to improve wealth and engagement in rural areas.

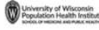
Learn more about the evidence behind [Community Development Financial Institutions](#).

Explore measures of poverty in your community:

- [Children in Poverty](#)
- [Income Inequality](#)
- [Living Wage](#)

Learn more from Partners for Rural Transformation:

- [Stories of Rural America](#)
- [How community development financial institutions drive economic opportunity](#)



University of Wisconsin
Population Health Institute
SCHOOL OF MEDICINE AND PUBLIC HEALTH

Support provided by
Robert Wood Johnson
Foundation

Resource guide

Coming to your inbox soon

11

Meeting the Moment: From Data to Impact

Introduction to the Beyond 2025 Action Hub

August 19, 2025

12

Tami Gouveia, DrPH, MPH, MSW

Director, Center for Innovation in Social
Work & Health

Paul Farmer Professor of the Practice,
Boston University School of Social Work



13

About the Center for Innovation in Social Work & Health (CISWH)

School of Social Work
Center for Innovation in Social Work & Health

NEWSLETTER SIGNUP NEWS CONTACT GET INVOLVED SEARCH

Our Story Labs Projects Resources Impact Team Events


Lead · Innovate · Amplify

Amplify the powerful impact of social work, co-create innovative solutions, and boldly challenge convention to steward conditions for equitable health, mental well-being, and quality of life for all.

- Health & Mental Well-Being
- Human Rights & Social Justice
- Public Health & Safety
- Democracy & Social Change
- Housing & Infrastructure
- Work & Economy

14

Why did we create the Beyond 2025 Action Hub?


School of Social Work
 Center for Innovation in Social Work & Health

BEYOND2025
ACTIVISM

[Home](#) • [All Cards](#) • [Main topics and tags](#) • [Latest Updates](#) • [Q Search](#) • [Recently Updated Cards](#)
[Login](#) • [Register](#)

Registration and logging in is required for using the Beyond 2025 site. Please [login](#) or [register](#).

Beyond 2025 Action Hub

It is evident that President Trump, Elon Musk, and the 119th Congress are rapidly advancing the policies outlined in "Project 2025" and the "America First Agenda". Many of these are clear signals of the path to authoritarianism and even fascism. From the 120+ executive orders and the firing of hundreds of thousands of federal employees, including Judge Advocate General Corps (JAG), a critical internal check against authoritarian overreach, to the gutting of USAID, the destabilizing trade wars, and the total disregard of court orders. It is clear that this is not normal. It is dangerous, and it is imperative that we understand what is happening and what is planned. We launched the Beyond 2025 Action Hub in January to help you learn and anticipate likely policy disruptions; to learn actions you can take to protect yourself, your loved ones, and your community; and to engage in dialogue and community-building to take collective action.

The Beyond 2025 Action Hub Offers:

- **[A Comprehensive Policy Database:](#)** A searchable database of 1,125+ "Project 2025" policies, Congressional bills, executive orders, and budget proposals.
- **[Action Toolkit:](#)** Practical exercises, tools, and resources to empower you to take action on the issues that matter most.
- **[Critical Conversation Series:](#)** A virtual forum addressing urgent threats, such as the attacks on immigrant rights, Medicaid, and reproductive freedom. We are planning sessions on the Supreme Court, Medicare, LGBTQ rights, and moral distress. To stay informed sign up for our newsletter.
- **[Affinity Groups:](#)** Small group efforts across the country focused on a specific topic to share information and support, and take collective action.
- **[Holding Space Dialogues:](#)** Weekly sessions where social workers, public health practitioners, and advocates convene to exchange information, strategize on future steps, and strengthen our growing, nationwide community.
- **[Resources to Help You Meet the Moment:](#)** A curated collection of books, podcasts, journals, blogs, journalists, and other resources to help you stay grounded, hopeful, engaged, and ready to take collective action.

A note about pacing, rest, and joy: Each of us plays a vital role in defending democracy, protecting the most marginalized among us, and building a sustainable, thriving future. But this work is demanding—physically and emotionally. Engaging with these issues can be challenging and, at times, retraumatizing. We urge you to prioritize your well-being. Embrace rest, find moments of joy, and support one another. Step back when needed and take breaks. This a long relay, not a marathon so rely on family, friends, and other members of the Beyond 2025 community.

Thank you for your dedication to this critical work. You are not alone.

15

Policy Intervention Card:

Tax Cuts and Jobs Act Permanent

Updated: December 18, 2024

Main topic: Economy

Source: America First Agenda

Source text: "Congress should build on the Trump Administration's efforts to expand choices for small businesses and workers, both in and out of the exchanges, by crafting an expansion of association health plans, short-term health plans, and health reimbursement arrangements (including individual coverage HRAs)" (The Heritage Foundation, page 470).

See also Pillar 1:8 Protect the Most Vulnerable, Including Seniors and People with Preexisting Conditions (America First Policy Institute).

Summary of impact analysis: Corporations and the very wealthy benefited the most from 2017 Tax Cuts and Jobs Act (TCJA), which was passed quickly along party lines in 2017 and without any hearings. TCJA is a regressive tax that results in substantial revenue losses to the US budget. The Congressional Budget Office (CBO) estimates \$2.3 trillion to \$5 trillion in lost revenue over the first ten years if TCJA provisions extended. The top 1% received a tax cut of about \$1,000 per week, while lowest income earners received a tax cut of about \$1.00 per week under the TCJA. The tax cut to the top 1% is equal to the tax cut of the bottom 75%. Under the corporate tax rate was cut from 35% to 21%, the corporate alternative minimum tax was repealed, and corporations are now allowed to write off equipment. In addition, changes were made to international tax rules, creating incentives to no longer shift profits overseas. It also created new 20% deduction on qualified business income for pass-through businesses, such as sole proprietorships. For individual filers, the TCJA nearly doubled the standard deduction, while capping state and local tax deductions to \$10,000 and limited home mortgage interest deduction itemization. It also increased the child tax credit to \$2,000 from \$1,000 per child. It doubled the estate tax exemption. The TCJA reduced annual government revenue by about 1% of GDP (\$1.17 billion annually) and many economists believe that efficiency gains will be offset by the need to borrow more, raising our debt-income ratio and the need to raise the debt ceiling. TCJA didn't result in wage and job increases and individual charitable donations declined by 7%. Any wage increases were captured by owners and managers, mostly through the corporate tax cuts. Because the TCJA benefited high-income earners and corporations the most, this is

It accelerates growing income inequality. While the cut in corporate tax rate from 35% to 21% was made permanent, other business and individual tax provisions of the TCJA are set to expire in 2025. President-Elect Trump has made extension of TCJA a First 100 Days Priority.

Population impacted: All US citizens and residents

Impacted agency: Department of the Treasury

Impacted organizations: Non-profits that rely on charitable giving

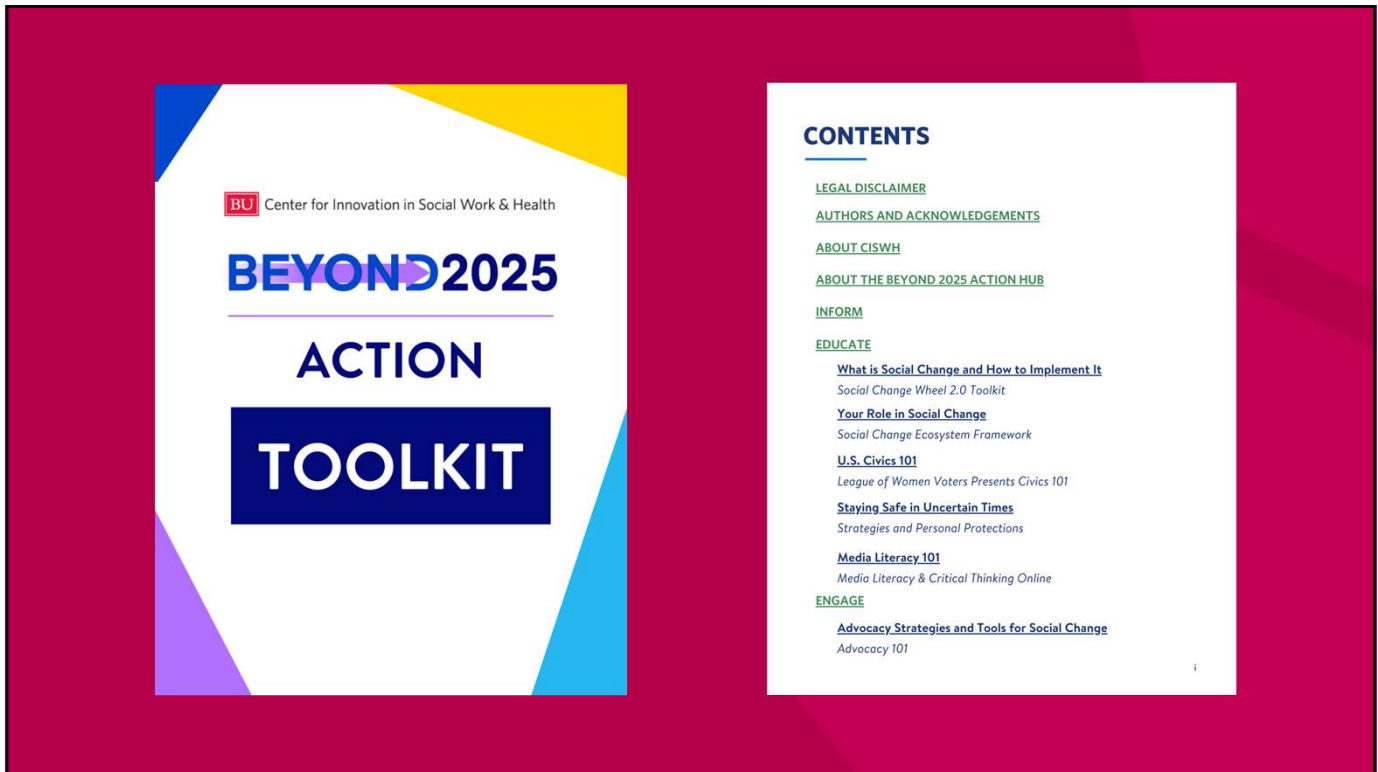
Source URL: <https://agenda.americafirstpolicy.com/economy/end-historic-cut-of-control-inflation>
<https://agenda.americafirstpolicy.com/economy>
<https://agenda.americafirstpolicy.com/economy/make-the-tax-cuts-and-jobs-acts-permanent>

Editorial notes: Scott Bessent is nominee for US Treasury Secretary and has publicly stated he will prioritize election tax cut pledges.

Tags: economy, economic policy, money, tax reform, taxes, Tax Cuts and Jobs Act, non-profit, TCJA, wealthy, corporations, low income, regressive, GDP, tax revenue, revenue, wages, jobs, income inequality, child tax credit, high income, First 100 Days, Great American Economy, inflation

The Beyond 2025 Policy Tracker Database

16



17



18

Holding Space Open Dialogue Sessions



19

Interface between the Policy Tracker Database and the Toolkit

Policy Intervention Card:
Tax Cuts and Jobs Act Permanent
 Updated: December 18, 2024
 Main topic: Economy
 Source: America First Agenda
 Source text: "Congress should build on the Trump Administration's efforts to expand choices for small businesses and workers, both in and out of the exchanges, by codifying an expansion of association health plans, short-term health plans, and health reimbursement arrangements (including individual coverage HRAs)" (The Heritage Foundation, page 470).
 See also Pillar 3: 9 Protect the Most Vulnerable, including Seniors and People with Preexisting Conditions (America First Policy Institute).
 Summary of impact analysis: Corporations and the very wealthy benefited the most from 2017 Tax Cuts and Jobs Act (TCJA), which were passed quickly during party lines in 2017 and without any hearings. TCJA is a regressive tax that resulted in substantial revenue losses to the US budget. The Congressional Budget Office (CBO) estimates \$2.3 trillion to \$3 trillion in lost revenue over the first ten years if TCJA provisions are extended. The top 1% received a tax cut of about \$1,000 per week, while lower income earners received a tax cut of about \$1.60 per week under the TCJA. The tax cut to the top 1% is equal to the tax cut of the bottom 70%. Under the corporate tax rate now from 35% to 21%, the corporate alternative minimum tax was repealed, and corporations are now allowed to write off equipment. In addition, changes were made to international tax rules, creating incentives for no longer with profits overseas. It also created new 20% deduction on qualified business income for pass-through businesses, such as sole proprietorships. For individual filers, the TCJA nearly doubled the standard deduction, while doubling state and local tax deductions to \$10,000 and limited home mortgage interest deduction limitation. It also increased the child tax credit to \$2,000 from \$1,200 per child. It doubled the estate tax exemption. The TCJA reduced annual government revenue by about 1% of GDP (\$1.7 trillion annually) and many economists believe that efficiency gains will be offset by the need to borrow more, raising our debt-income ratio and the need to raise the debt ceiling. TCJA didn't result in wage and job increases and individual charitable donations declined by 7%. Any wage increases were captured by owners and managers, mostly through the corporate tax cut. Because the TCJA benefited high-income earners and corporations the most, this is a regressive tax cut.
 Population impacted: All US citizens and residents
 Impacted agency: Department of the Treasury
 Impacted organizations: Non-profits that rely on charitable giving
 Source URL: <https://www.americafirstpolicy.com/economy/tax-cuts-and-jobs-act-permanent>
 Editorial notes: Scott Bennett is nominee for US Treasury Secretary and has publicly stated he will prioritize election tax cut pledges.
 Tags: economy, economic policy, money, tax reform, taxes, Tax Cuts and Jobs Act, non-profit, TCJA, wealthy, corporations, low income, regressive, GDP, tax revenue, revenue, wages, jobs, income inequality, child tax credit, home, First 100 Days, Great American Economy, inflation



BU Center for Innovation in Social Work & Health
BEYOND 2025
ACTION
TOOLKIT

20

Beyond 2025 Affinity Groups



21

BEYOND 2025

Thank you!

Please scan to register for the
Beyond 2025 Action Hub

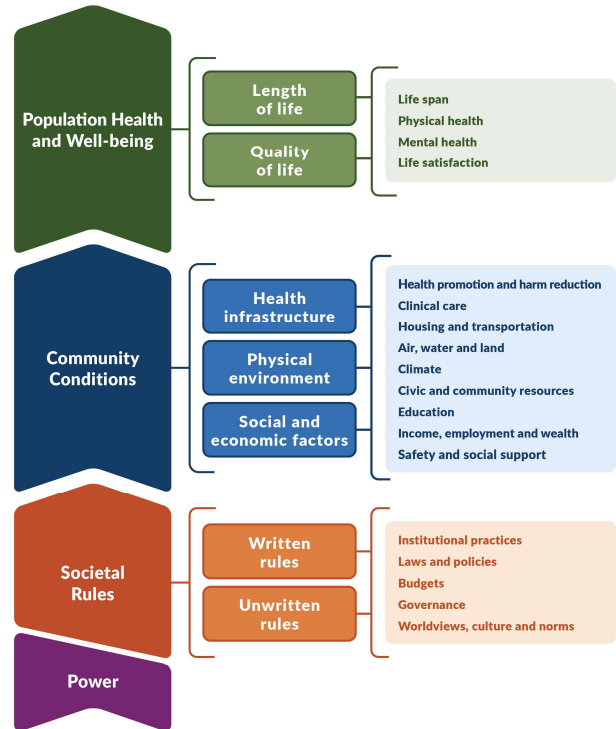


22



County Health
Rankings & Roadmaps

**Change the rules!
We can shape a
society where
everyone thrives.**



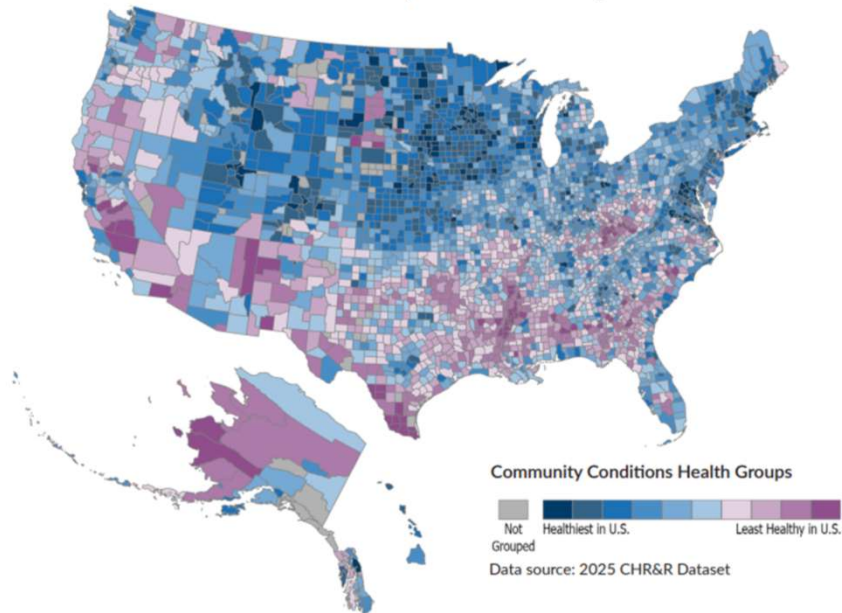
University of Wisconsin Population Health Institute Model of Health © 2006

23



County Health
Rankings & Roadmaps

Variation in Community Conditions Among U.S. Counties

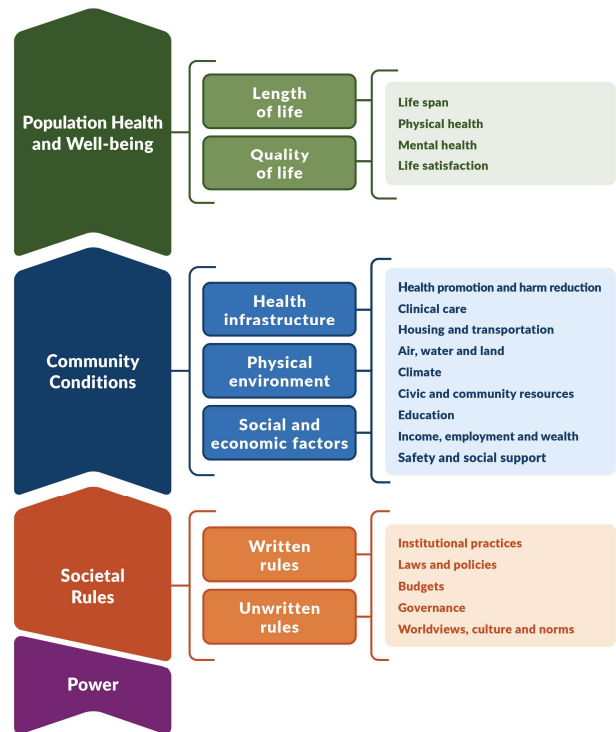


24



County Health
Rankings & Roadmaps

Rules set and applied by people
with power shape access to opportunities
and resources



University of Wisconsin Population Health Institute Model 44-10-0005

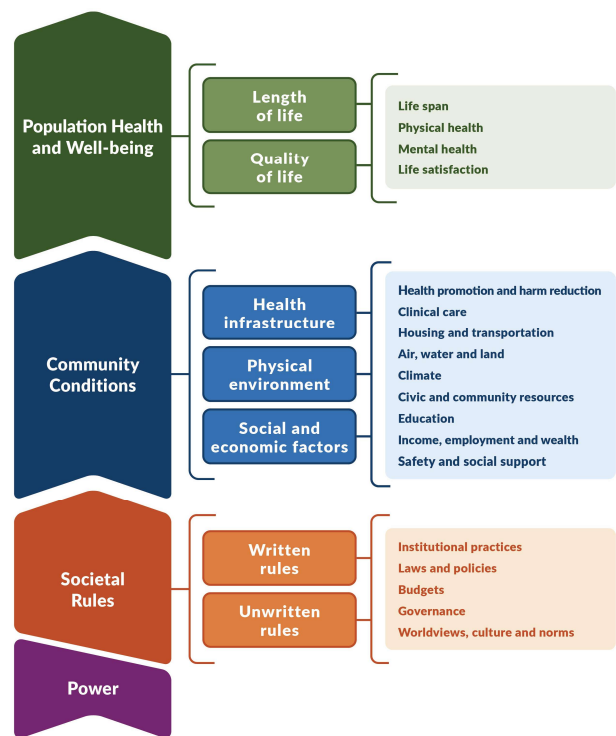
25



County Health
Rankings & Roadmaps

Rules set and applied by people
with power shape access to opportunities
and resources

Power protects advantage



University of Wisconsin Population Health Institute Model 44-10-0005

26

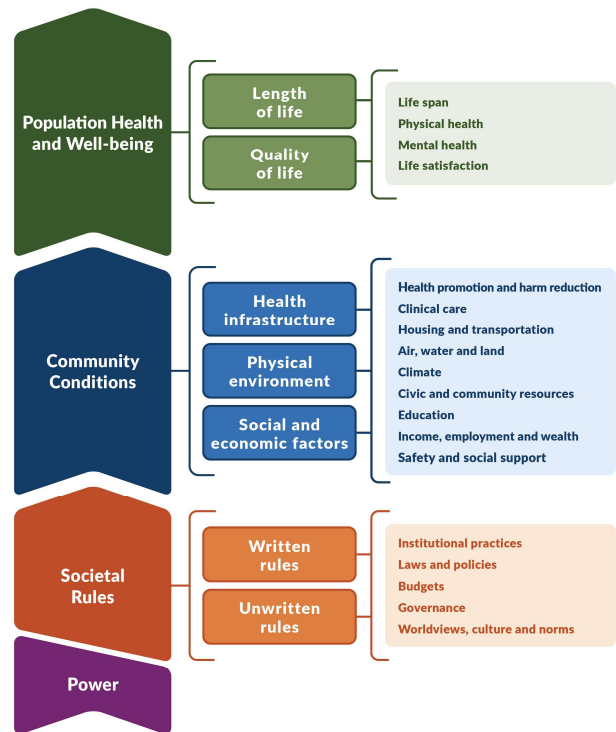


County Health
Rankings & Roadmaps

We can structure society so that everyone can thrive

Rules set and applied by people
with power shape access to opportunities
and resources

Power protects advantage
Power disrupts barriers



University of Wisconsin Population Health Institute Model of Health © 2016

27



County Health
Rankings & Roadmaps

From data to impact.



Yousang Drawing
Urban Change

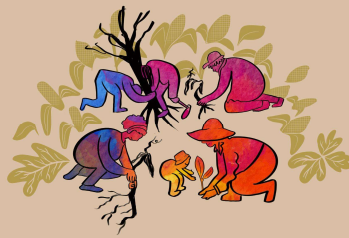
28



County Health
Rankings & Roadmaps

**From data
to impact.**

Inform policies



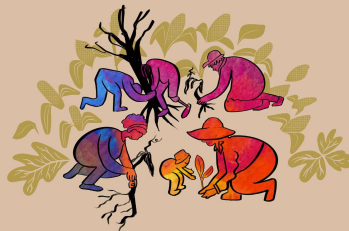
29



County Health
Rankings & Roadmaps

**From data
to impact.**

Inform policies



Remind us that
change is
possible

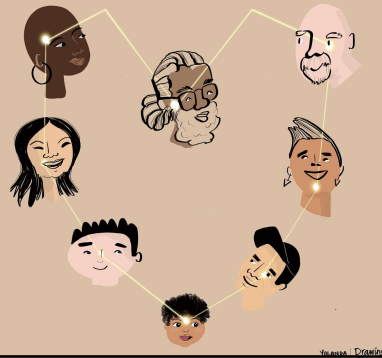
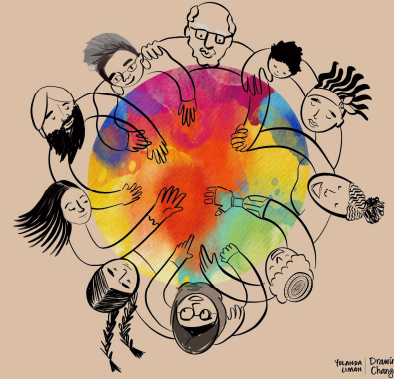
30



County Health
Rankings & Roadmaps

**From data
to impact.**

Cultivate trust



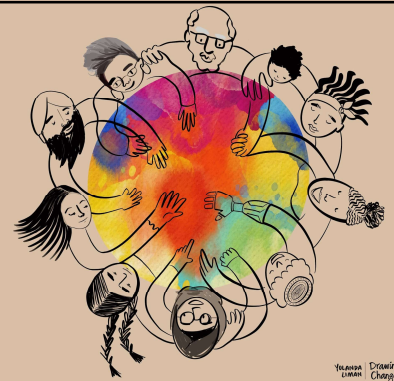
31



County Health
Rankings & Roadmaps

**From data
to impact.**

Cultivate trust



Identify
affinities
& invite civic
engagement

32



County Health
Rankings & Roadmaps

“FEMA provides disaster assistance to individuals, families and businesses whose property has been damaged or destroyed and whose losses are not covered by insurance.”

Federal Emergency Management Agency



33



County Health
Rankings & Roadmaps

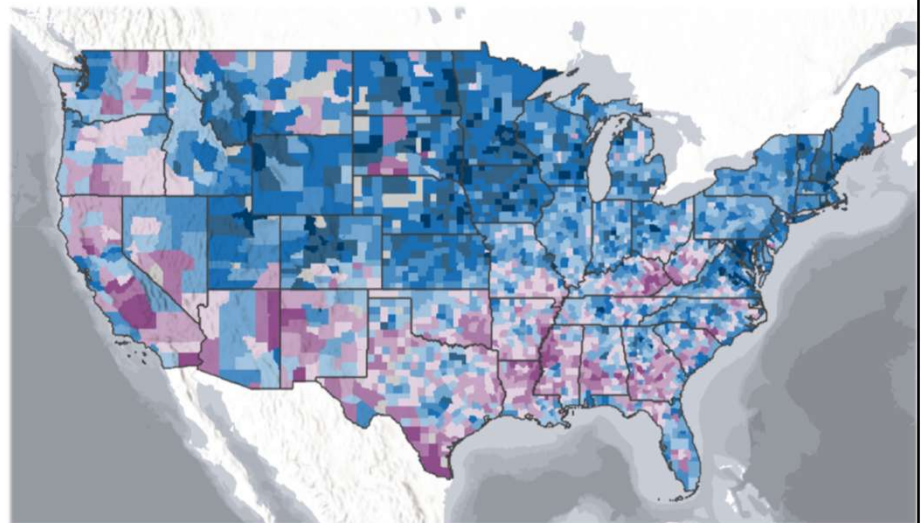
“It is the policy of the United States that State and local governments and individuals play a more active and significant role in national resilience and preparedness...”

The White House. “Achieving Efficiency Through State and Local Preparedness.”
Executive Order: March 19, 2025.

34



County Health
Rankings & Roadmaps



Not
Grouped

Healthiest in U.S. Least Healthy in U.S.

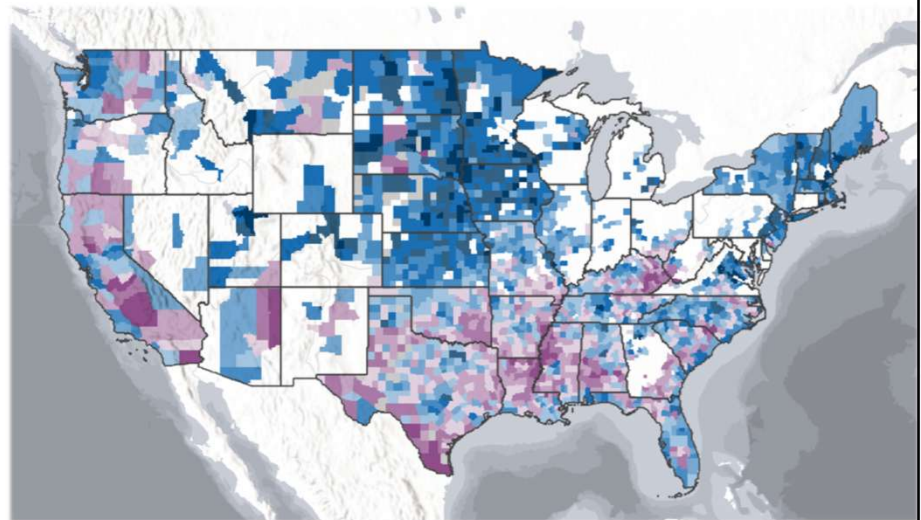
Data source: 2025 CHR&R Dataset

35



County Health
Rankings & Roadmaps

1 or more weather-related
disaster declarations
2019–2023



Not
Grouped

Healthiest in U.S. Least Healthy in U.S.

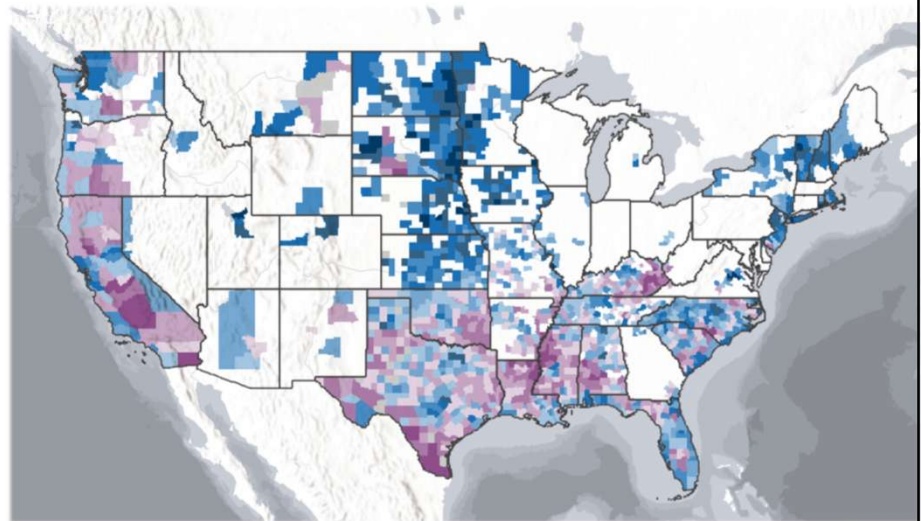
Data source: 2025 CHR&R Dataset

36



County Health
Rankings & Roadmaps

2 or more weather-related
disaster declarations
2019-2023



Not
Grouped

Healthiest in U.S. Least Healthy in U.S.

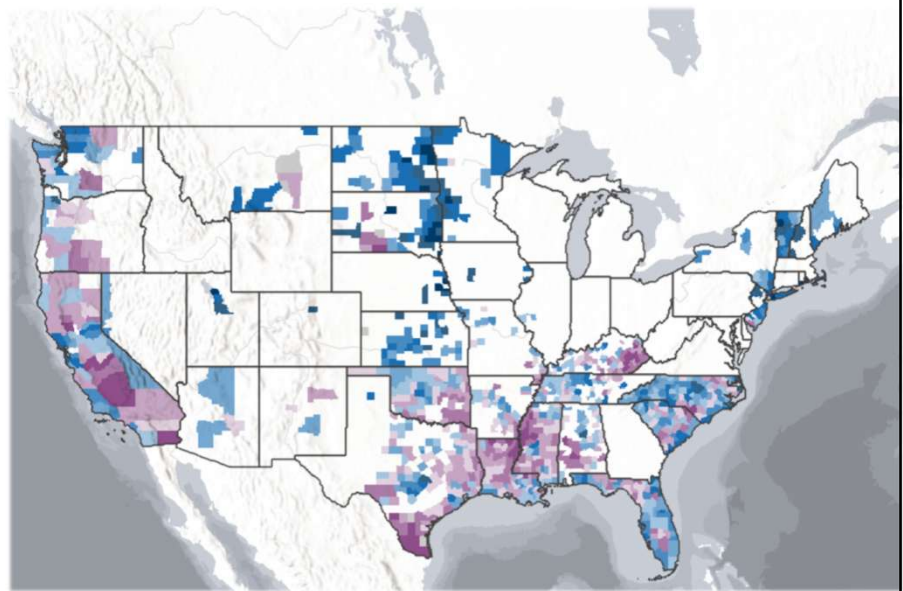
Data source: 2025 CHR&R Dataset

37



County Health
Rankings & Roadmaps

3 or more weather-related
disaster declarations
2019-2023



Not
Grouped

Healthiest in U.S. Least Healthy in U.S.

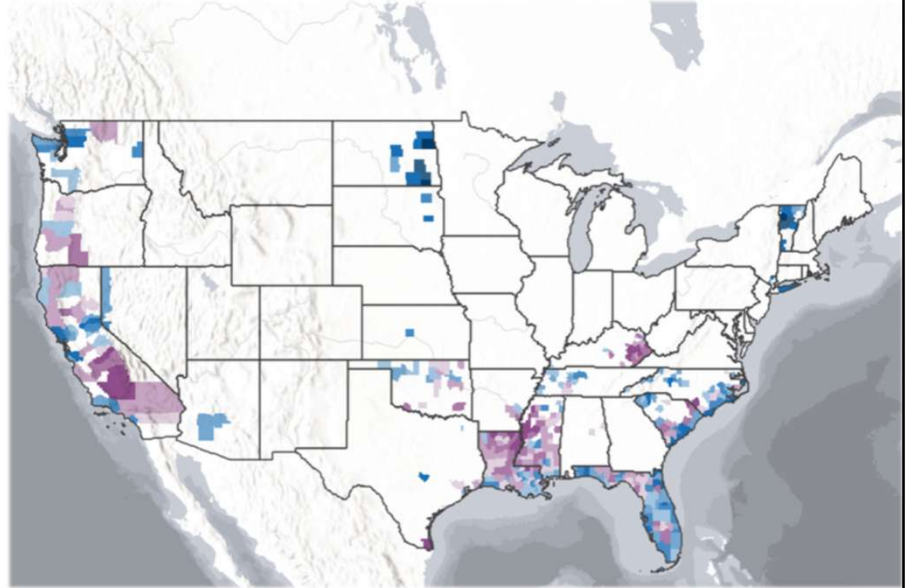
Data source: 2025 CHR&R Dataset

38



County Health
Rankings & Roadmaps

5 or more weather-related
disaster declarations
2019-2023



Not Grouped Healthiest in U.S. Least Healthy in U.S.

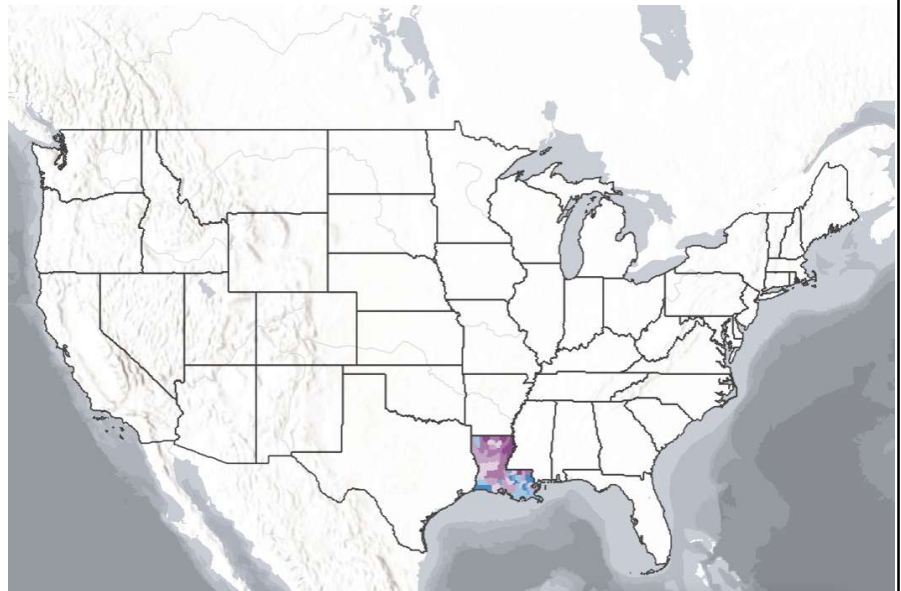
Data source: 2025 CHR&R Dataset

39



County Health
Rankings & Roadmaps

11 or more weather-related
disaster declarations
2019-2023



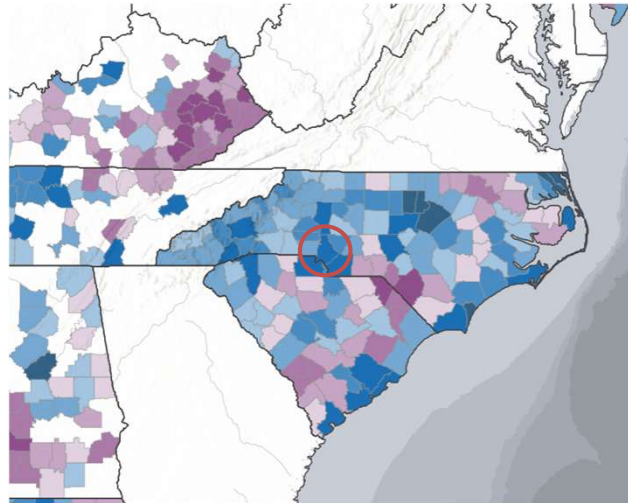
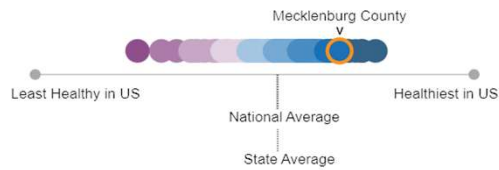
Not Grouped Healthiest in U.S. Least Healthy in U.S.

Data source: 2025 CHR&R Dataset

40

Mecklenburg, North Carolina

- Experienced 3 Federal Disaster Declarations (2019–2023)
- Hurricane Helene in 2024



41

“ FEMA provides disaster assistance to individuals, families and businesses whose property has been damaged or destroyed and whose losses are not covered by insurance. ”

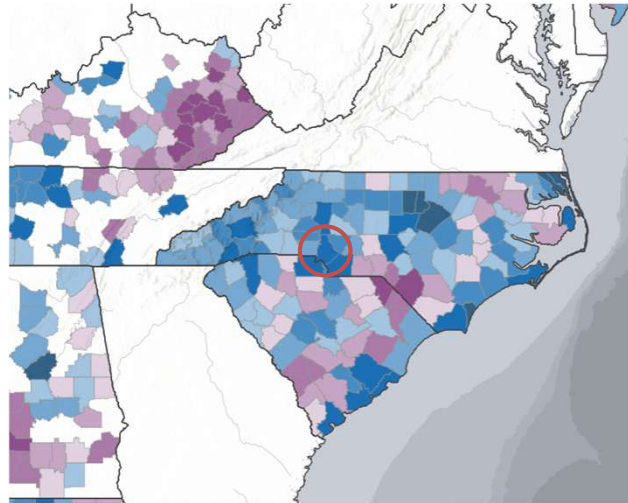
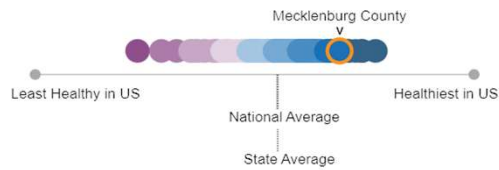
Federal Emergency Management Agency



42

Mecklenburg, North Carolina

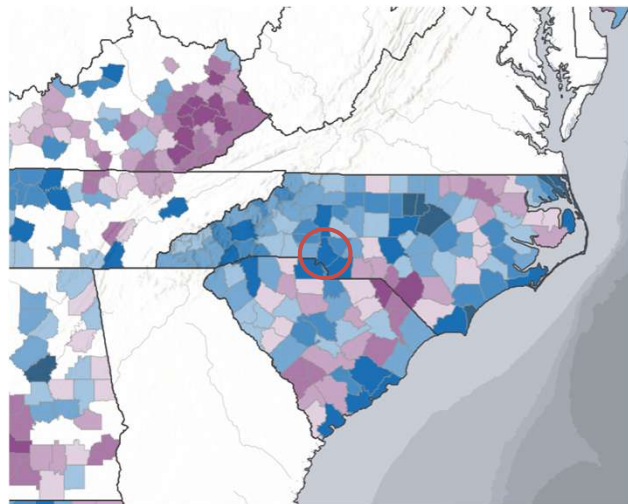
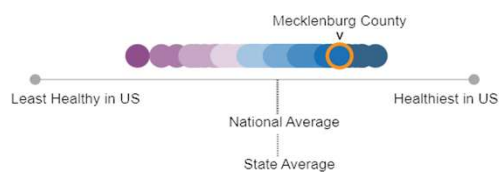
households with higher
incomes had income 4.4
times that of households
with lower incomes.



43

Mecklenburg, North Carolina

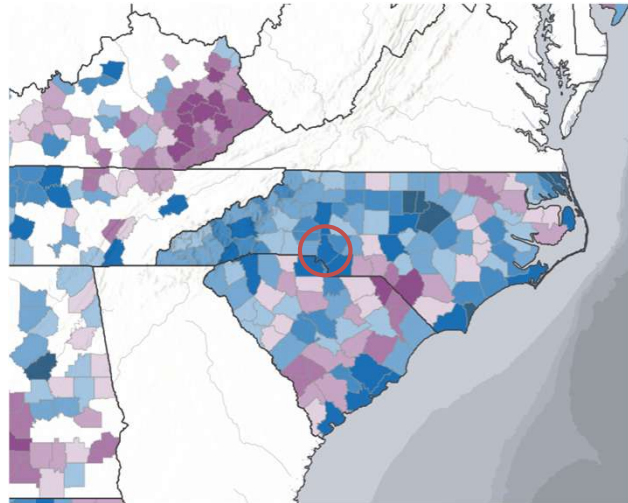
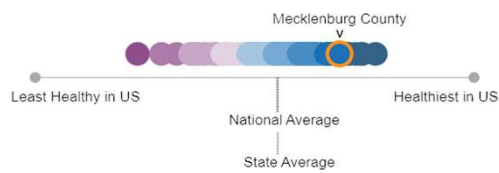
15% of households with at least 1
of 4 housing problems:
overcrowding, high housing
costs, lack of kitchen facilities,
or lack of plumbing facilities



44

Mecklenburg, North Carolina

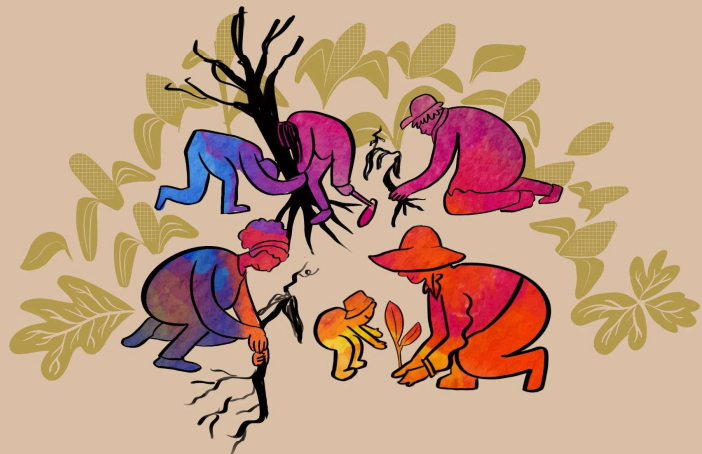
14% of households spend 50% or more of their household income on housing



45

We don't have to rebuild in ways that repeat past shortcomings.

Together we can change the rules and reimagine policies that serve everyone.



YOLANDA
LIMAN Drawing
Change

46



County Health
Rankings & Roadmaps

Questions?



47



County Health
Rankings & Roadmaps

Upcoming webinar:

September 23,
2025

**Meeting the
moment:
Philanthropy
advancing the
greater good**



Caroline Brunton
Program officer
W.K. Kellogg Foundation



Shantell Hinton-Hill
Senior equity officer
Winthrop Rockefeller
Foundation



Paul Kennedy
President
Walker Area
Community Foundation

48



County Health
Rankings & Roadmaps

**Click on
survey in
the chat**



49



County Health
Rankings & Roadmaps



Discussion group

When: Following the webinar

What: Share ideas, ask questions

How: Zoom

Why: Deepen learning



50



County Health
Rankings & Roadmaps

**Stay
connected**



Sign up for our newsletter
CountyHealthRankings.org/subscribe



Follow [@CHRankings](https://twitter.com/CHRankings)



Facebook.com/CountyHealthRankings



Linkedin.com/company/county-health-rankings-roadmaps