



County Health
Rankings & Roadmaps

Webinar

Data and strategies for disability equity
and inclusion

December 10, 2024

countyhealthrankings.org



University of Wisconsin
Population Health Institute
UNIVERSITY OF WISCONSIN
SCHOOL OF MEDICINE AND PUBLIC HEALTH

Support
provided by



Robert Wood Johnson
Foundation

1



County Health
Rankings & Roadmaps



Purpose

Share
successes and
lessons learned

Offer
resources

Build
knowledge

Listen
for multiple
perspectives

2

County Health Rankings & Roadmaps

We value


**University of Wisconsin
Population Health Institute**
UNIVERSITY OF WISCONSIN
SCHOOL OF MEDICINE AND PUBLIC HEALTH

Collaboration

Innovation

Courage

Inclusion

Excellence

Integrity

3

County Health Rankings & Roadmaps

Join the conversation

Question and Answer

Welcome to Q&A
 Questions you ask will show up here. Only host and panelists will be able to see all questions.

Where can I find strategies to address children in poverty?

☐ Send anonymously

Webinar Chat

Me to Everyone

JL Hi Everyone, I'm James, from Madison, WI.

Zoomhost CHRR to Everyone

Hello James and welcome to today's webinar.

Who can see your messages?

To: Everyone

Your text can be seen by panelists and other attendees

4



County Health
Rankings & Roadmaps

Group agreements

1. Listen actively.
2. Participate to the fullest of your ability.
3. Speak from one's own experience and story.
4. Lead with curiosity to understand others.
5. Be conscious of your body language and nonverbal responses.
6. Expect ambiguity and uncertainty.
7. Be accountable to oneself and each other.

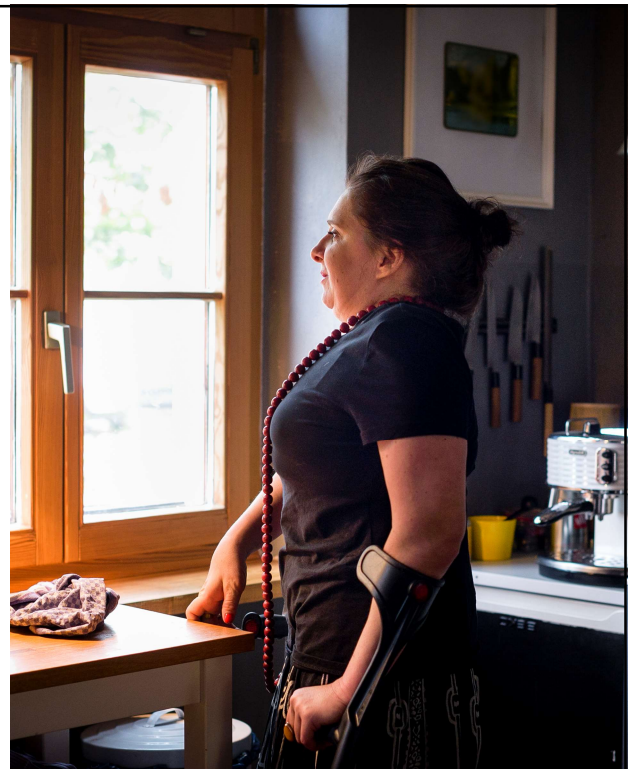
5



County Health
Rankings & Roadmaps

Disability equity

Ensuring people with disabilities
have what they need to thrive



6



County Health
Rankings & Roadmaps

Disability inclusion

Ensuring everybody has the same
opportunities to participate in
every aspect of life to the best of
their abilities and desires



7



County Health
Rankings & Roadmaps

Disability justice

Broader than
equity and
inclusion



8



County Health
Rankings & Roadmaps

Welcome



Bonnielin Swenor
Director
Johns Hopkins Disability Health
Research Center



Kimberly Tissot
President and CEO
Able SC

9



County Health
Rankings & Roadmaps



Discussion group

When: Following the webinar

What: Share ideas, ask questions

How: Zoom

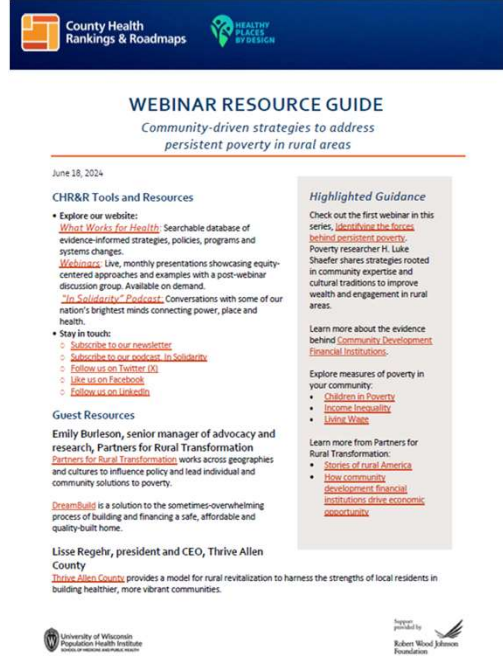
Why: Deepen learning



10

Resource guide

Coming to your inbox soon



County Health Rankings & Roadmaps

HEALTHY PLACES BY DESIGN

WEBINAR RESOURCE GUIDE

Community-driven strategies to address persistent poverty in rural areas

June 18, 2024

CHR&R Tools and Resources

- Explore our website:
 - [What Works for Health](#): Searchable database of evidence-informed strategies, policies, programs and systems changes.
 - [Webinars](#): Live, monthly presentations showcasing equity-centered approaches and examples with a post-webinar discussion group. Available on demand.
 - ["In Solidarity" Podcast](#): Conversations with some of our nation's brightest minds connecting power, place and health.
- Stay in touch:
 - [Subscribe to our newsletter](#)
 - [Subscribe to our podcast, In Solidarity](#)
 - [Follow us on Twitter \(X\)](#)
 - [Like us on Facebook](#)
 - [Follow us on LinkedIn](#)

Guest Resources

Emily Burleson, senior manager of advocacy and research, Partners for Rural Transformation
[Partners for Rural Transformation](#) works across geographies and cultures to influence policy and lead individual and community solutions to poverty.

[DreamBuild](#) is a solution to the sometimes-overwhelming process of building and financing a safe, affordable and quality-built home.

Lise Regehr, president and CEO, Thrive Allen County
[Thrive Allen County](#) provides a model for rural revitalization to harness the strengths of local residents in building healthier, more vibrant communities.

Highlighted Guidance

Check out the first webinar in this series, [identifying the forces behind persistent poverty](#). Poverty researcher H. Luke Shaeffer shares strategies rooted in community expertise and cultural traditions to improve wealth and engagement in rural areas.

Learn more about the evidence behind [Community Development Financial Institutions](#).

Explore measures of poverty in your community:

- [Children in Poverty](#)
- [Income Inequality](#)
- [Living Wage](#)

Learn more from Partners for Rural Transformation:

- [Stories of rural America](#)
- [How community development financial institutions drive economic opportunity](#)

University of Wisconsin Population Health Institute
 DIVISION OF MEDICINE AND PUBLIC HEALTH

Trusted partner to
 Robert Wood Johnson Foundation

11

Today's guests have elected not to share slides. Links to selected resources they reference will be included in the resource guide.

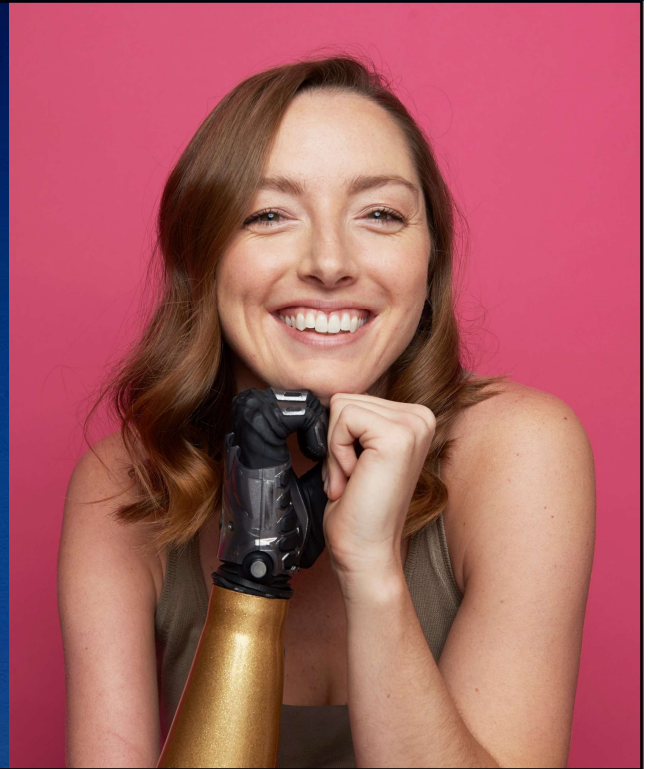
12



County Health
Rankings & Roadmaps

Next steps

- ✓ Explore your organization's policies and practices
- ✓ Aim for disability justice
- ✓ Include those with disabilities in all decisions and practices



13



County Health
Rankings & Roadmaps

Explore these evidence-rated strategies

- ✓ Social service integration
- ✓ Rural transportation services



14



County Health
Rankings & Roadmaps

**Click on
survey in
the chat**



15



County Health
Rankings & Roadmaps

Questions?



16



County Health
Rankings & Roadmaps

Upcoming webinar:

January 21, 2025

**National Day of Racial
Healing: The Land Back
movement and health**



Nick Tilsen
President and CEO
NDN Collective
Citizen of the Oglala Lakota Nation

17



County Health
Rankings & Roadmaps



Discussion group

When: Following the webinar

What: Share ideas, ask questions

How: Zoom

Why: Deepen learning



18



County Health
Rankings & Roadmaps

**Stay
connected**



Sign up for our newsletter
CountyHealthRankings.org/subscribe



Follow [@CHRankings](https://twitter.com/CHRankings)



Facebook.com/CountyHealthRankings



Linkedin.com/company/county-health-rankings-roadmaps