

County Health Rankings & Roadmaps www.countyhealthrankings.org

WELCOME!

In a moment, we will put up a poll asking you which option best describes how your community is **assessing needs and resources**...

Which statement best describes your community's progress in this step?

- A. **START: We need to collect data but aren't sure where or how to start.**
- B. **ACT: We are collecting a variety of data, but we could use some help interpreting what it means and moving forward.**
- C. **We have successfully assessed needs and resources.**

County Health Rankings & Roadmaps
A Healthier Nation, County by County

TAKE ACTION: ASSESS NEEDS & RESOURCES



Karen Odegaard
Community Engagement Specialist
University of Wisconsin
Population Health Institute



Jan O'Neill
Community Engagement Specialist
University of Wisconsin
Population Health Institute



Deb Nichols
Public Information Officer
Cattaraugus County Health Dept.

June 12, 2012


Robert Wood Johnson Foundation

UNIVERSITY OF WISCONSIN
Population Health Institute
Promoting Research and Practice


County Health Rankings & Roadmaps www.countyhealthrankings.org

GO TO WEBINAR ATTENDEE INTERFACE

1. **Viewer Window**



2. **Control Panel**







County Health Rankings & Roadmaps
www.countyhealthrankings.org

OUTLINE

- Welcome & Overview
- Communities in Action: Cattaraugus County Interview**
- Q & A
- Roadmaps to Health Action Center Tools
- Summary & Wrap-up

County Health Rankings & Roadmaps www.countyhealthrankings.org 7

GOALS

- Understand how to bring multiple partners together, each “owning” different data, to create synergy and action
- Become familiar with a process for conducting “reality checks” in the community
- Know where to find tools for taking next steps with Assessing Needs & Resources

7

County Health Rankings & Roadmaps www.countyhealthrankings.org 8

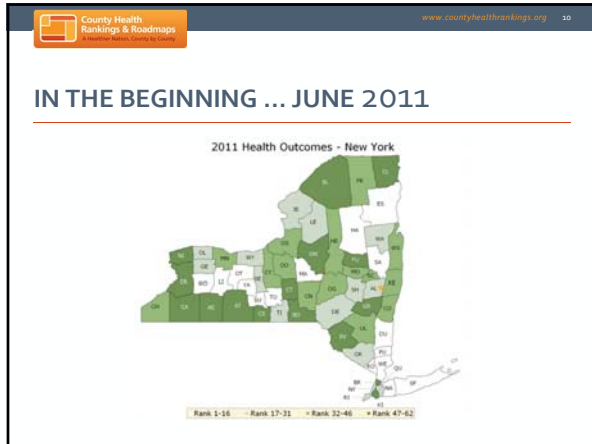
TAKE ACTION

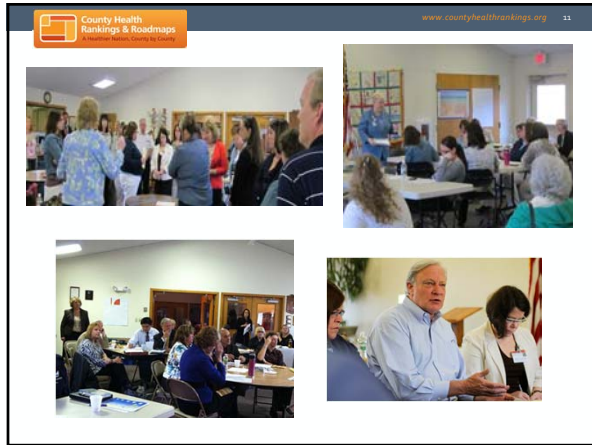
Essential Question: How can the assessment process empower our community to want to take action?

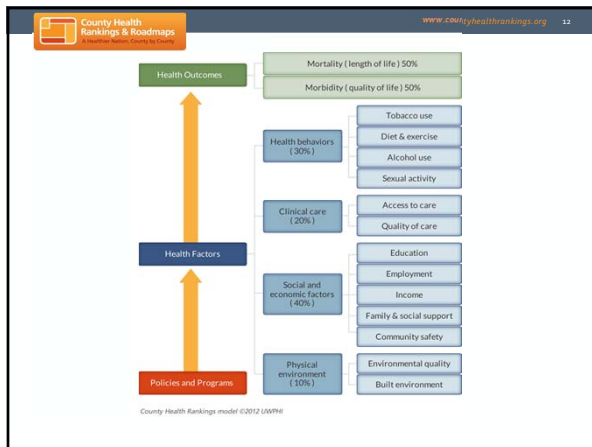
County Health Rankings & Roadmaps www.countyhealthrankings.org 9

CATTARAUGUS COUNTY

Photos: Douglone, Flickr Creative Commons







County Health Rankings & Roadmaps www.countyhealthrankings.org

CONSORTIUM MAKE-UP




- **Leadership:** Steering Committee + Facilitators
- **Work Group:** designated assignments
- **General partners:** county department, municipal leaders, not-for-profits, agencies/organizations, faith-based, United Way, medical providers, rural health care networks, SNI, YMCA, Red Cross, CCE, CCA, CARES, WNY PHA, Fidelis, business, education

Open to anyone!

County Health Rankings & Roadmaps www.countyhealthrankings.org

CONSORTIUM: ASSESSING NEEDS & RESOURCES

- What works
- What/ who is missing
- How to leverage “working” to address “missing”?
- Assets Inventory by categories



County Health Rankings & Roadmaps www.countyhealthrankings.org

ASSETS INVENTORY BY CATEGORY

- Transportation and Access
- Child Education and Daycare
- Youth supports and Recreation
- Community Involvement and Safety
- Employment and Education
- Family Stability and Relationships
- Financial Stability
- Food and Nutrition
- Housing
- Medical Care and Insurance
- Health/ Physical/ Social/ Emotional/ Mental Support



County Health Rankings & Roadmaps www.countyhealthrankings.org 16

IDENTIFYING PRIORITIES

Work Group

- Children in Poverty
- Built Environment
- Tobacco Use

Consortium

- Access
- Health Behaviors
- Education
- Funding/ Economic Drivers
- Motivation/ Motivating Factors



County Health Rankings & Roadmaps www.countyhealthrankings.org 17

INCENTIVE FOR ENGAGEMENT

- Data
- Transportation
- Medical Providers
- Home Care
- Respite Care
- Mental Health
- Insurances
- Senior Supports



- Day Care
- Schools, Higher Education
- Service Clubs
- Churches
- Food Pantries
- Support Groups
- Recreation
- Walkable Trails, Parks, etc.

Dashboard Model shared by Allegany County can be found at www.alleganydatareserve.org

County Health Rankings & Roadmaps www.countyhealthrankings.org 18


NEXT STEPS: REALITY CHECK!



- Community Conversations
- Trained facilitators in 4-6 county sites



County Health Rankings & Roadmaps www.countyhealthrankings.org 19



QUESTIONS

County Health Rankings & Roadmaps www.countyhealthrankings.org 20

ROADMAPS TO HEALTH ACTION CENTER



County Health Rankings & Roadmaps www.countyhealthrankings.org 21

DATA DRILLDOWN GUIDE

- ▶ Using Your Snapshot
- ▶ Digging Deeper
- ▶ Finding More Data

DATA DRILLDOWN GUIDE

Using Your Snapshot

The County Health Snapshot provides a snapshot of a community's health and a starting point for investigating and discussing ways to improve health. Beyond the measures provided in the Snapshot and additional measures available at the web site, other community health data are available from national and state organizations. This guide helps you navigate the information in your county's Snapshot and identify key areas where you may wish to look for additional data. It also offers tips to additional national and state data sources. We want to thank you for helping the data section so that you do not think any of the information is out of hand!

First, look at your Health Outcomes cards and measures:

- How does your county rank and how do your measures compare to your state average? To the national benchmark? Keep in mind that each measure has a confidence interval or error margin. Reporting of a measure above the state average adds the state average to represent the error margin for your county. Then further investigation is recommended. Likewise, if a measure is below the state average add the state average to better the error margin for your county. This is a measure of strength in your community.
- Identify where you stand in being well. For example, does your county have a low rate of premature death compared to your state average. Also, identify where the county may need to improve. For example, does your community have high rate of low birthweight babies? It is also about your challenges and opportunities that you may need to further understand what is going on in your community regarding low birthweight babies.

Next, look at your Health Factors cards:

- Is there one area where the rank is much lower than the others? If so, this may be a good place to start. Keep in mind that each state county is different enough to better a third area that usually, compare your county rank to the population health.
- Does you have identified one or more of the Health Factors to explore more closely. How do you compare to measures compared to your state average? Factors being used that are measures that a confidence interval or error margin surrounding it. If a measure is above or below the state average add the state average to better the error margin for your county. Then further investigation is recommended. And again, if the measure is not enough, is further than the

County Health Rankings & Roadmaps www.countyhealthrankings.org 25

STAYING CONNECTED

County-by-County **BLOG**




e-Newsletter: chr@match.wisc.edu


County Health Rankings & Roadmaps www.countyhealthrankings.org 26

ACKNOWLEDGEMENTS

- ▶ Wisconsin *County Health Rankings & Roadmaps* Team
 - Including Bridget Catlin, Julie Willems Van Dijk, David Kindig, Kirstin Siemerling, Alison Bergum
- ▶ Robert Wood Johnson Foundation
 - Including Abbey Cofsky, Brenda Henry, Michelle Larkin, Jim Marks, Joe Marx
- ▶ Our Partners
 - Including Burness Communications, Community Catalyst, United Way Worldwide, ASTHO, NACCHO, NNPHI, Dartmouth Institute, CDC, NCHS


County Health Rankings & Roadmaps www.countyhealthrankings.org 27

TAKE ACTION



ESSENTIAL QUESTION
How can the assessment process empower our community to want to take action?

County Health Rankings & Roadmaps www.countyhealthrankings.org 28



"You cannot feed the hungry on statistics."

—David Lloyd George
