

**County Health
Rankings & Roadmaps**

Building a Culture of Health, County by County

A Robert Wood Johnson Foundation program

2017 County Health Rankings

Pennsylvania



A collaboration between the Robert Wood Johnson Foundation and the University of Wisconsin Population Health Institute.



Support provided by

Robert Wood Johnson Foundation

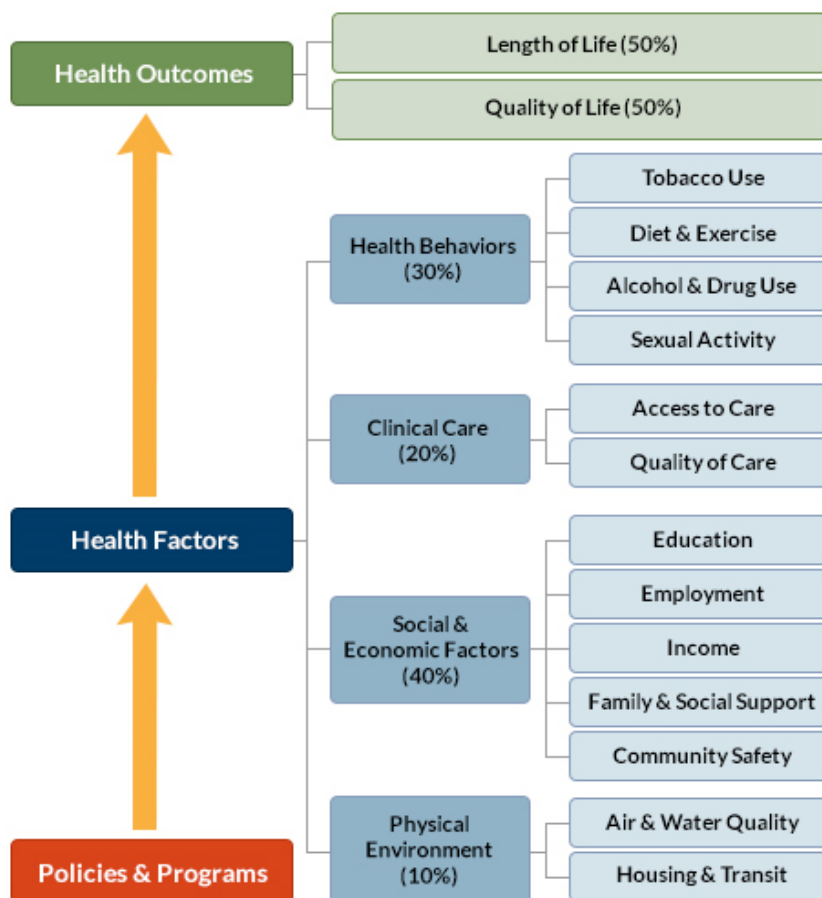


INTRODUCTION

The *County Health Rankings & Roadmaps* program brings actionable data and strategies to communities to make it easier for people to be healthy in their homes, schools, workplaces, and neighborhoods. Ranking the health of nearly every county in the nation, the *County Health Rankings* illustrate what we know when it comes to what is making people sick or healthy. The *Roadmaps* show what we can do to create healthier places to live, learn, work, and play. The Robert Wood Johnson Foundation (RWJF) collaborates with the University of Wisconsin Population Health Institute (UWPHI) to bring this program to cities, counties, and states across the nation.

WHAT ARE THE COUNTY HEALTH RANKINGS?

Published online at countyhealthrankings.org, the *Rankings* help counties understand what influences how healthy residents are and how long they will live. The *Rankings* are unique in their ability to measure the current overall health of nearly every county in all 50 states. They also look at a variety of measures that affect the future health of communities, such as high school graduation rates, access to healthy foods, rates of smoking, obesity, and teen births. Communities use the *Rankings* to help identify issues and opportunities for local health improvement, as well as to garner support for initiatives among government agencies, healthcare providers, community organizations, business leaders, policy makers, and the public.



DIGGING DEEPER INTO HEALTH DATA

Although we know that a range of factors are important for good health, every state has communities that lack both opportunities to shape good health and strong policies to promote health for everyone. Some counties lag far behind others in how well and how long people live – which we refer to as a “health gap.” Find out what's driving health differences across your state and what can be done to close those gaps. Visit countyhealthrankings.org/reports.

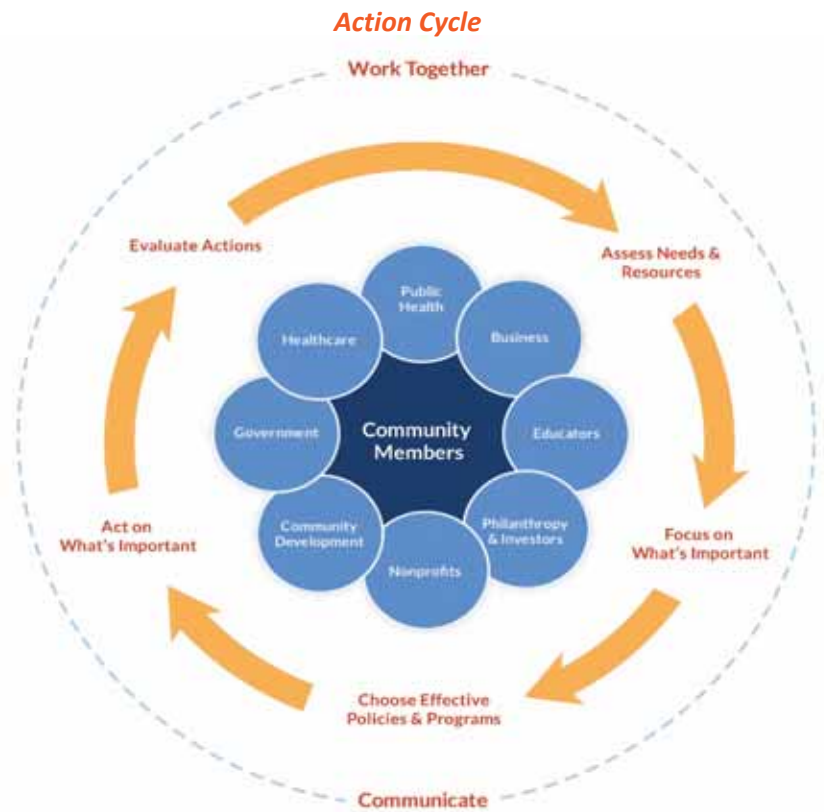
To further explore health gaps and other data sources in your community, check out the feature to [find more data](#) for your state and [dig deeper](#) on differences in health factors by geography or by population sub-groups. Visit countyhealthrankings.org/using-the-rankings-data.

MOVING FROM DATA TO ACTION

Roadmaps to Health help communities bring people together to look at the many factors that influence health and opportunities to reduce health gaps, select strategies that can improve health for all, and make changes that will have a lasting impact. The *Roadmaps* focus on helping communities move from *awareness* about their county's ranking to *actions* designed to improve everyone's health. The *Roadmaps to Health* Action Center is a one-stop shop of information to help any community member or leader who wants to improve their community's health by addressing factors that we know influence health, such as education, income, and community safety.

Within the Action Center you will find:

- Online step-by-step guidance and tools to move through the Action Cycle
- [What Works for Health](#) – a searchable database of evidence-informed policies and programs that can improve health
- Webinars featuring local community members who share their tips on how to build a healthier community
- Community coaches, located across the nation, who provide customized consultation to local leaders who request guidance in how to accelerate their efforts to improve health. You can contact a coach by activating the Get Help button at countyhealthrankings.org



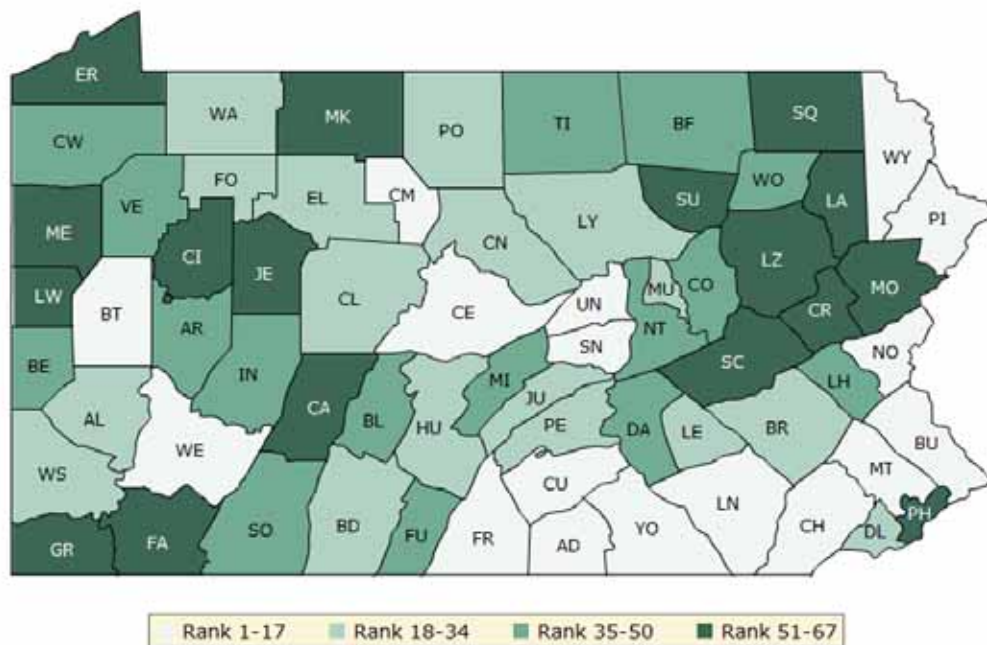
HOW CAN YOU GET INVOLVED?

You might want to contact your local affiliate of United Way Worldwide, the National Association of Counties, Local Initiatives Support Corporation (LISC), or Neighborworks— their national parent organizations have partnered with us to raise awareness and stimulate action to improve health in their local members' communities. By connecting with other leaders interested in improving health, you can make a difference in your community. In communities large and small, people from all walks of life are taking ownership and action to improve health. Visit countyhealthrankings.org to get ideas and guidance on how you can take action in your community. Working with others, you can improve the health of your community.

HOW DO COUNTIES RANK FOR HEALTH OUTCOMES?

The green map below shows the distribution of Pennsylvania’s **health outcomes**, based on an equal weighting of length and quality of life.

Lighter shades indicate better performance in the respective summary rankings. Detailed information on the underlying measures is available at countyhealthrankings.org.

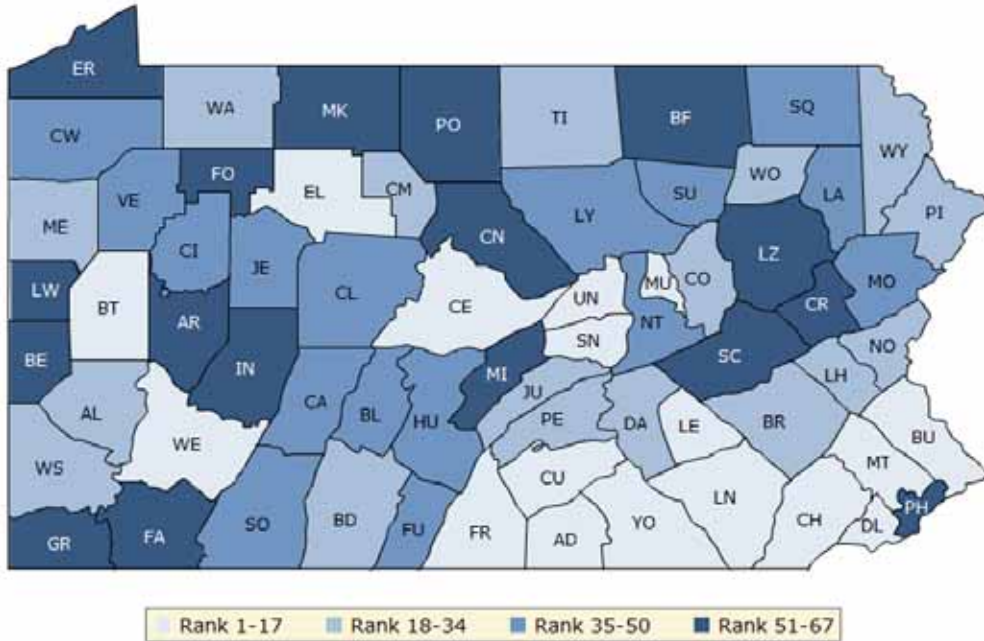


County	Rank	County	Rank	County	Rank	County	Rank
Adams	9	Clinton	30	Lackawanna	57	Pike	11
Allegheny	29	Columbia	41	Lancaster	10	Potter	25
Armstrong	50	Crawford	48	Lawrence	60	Schuylkill	64
Beaver	38	Cumberland	5	Lebanon	19	Snyder	14
Bedford	21	Dauphin	39	Lehigh	40	Somerset	36
Berks	24	Delaware	26	Luzerne	62	Sullivan	66
Blair	47	Elk	32	Lycoming	33	Susquehanna	61
Bradford	43	Erie	56	McKean	52	Tioga	35
Bucks	6	Fayette	65	Mercer	51	Union	3
Butler	7	Forest	28	Mifflin	42	Venango	45
Cambria	63	Franklin	13	Monroe	53	Warren	23
Cameron	8	Fulton	44	Montgomery	4	Washington	34
Carbon	54	Greene	55	Montour	20	Wayne	17
Centre	2	Huntingdon	27	Northampton	15	Westmoreland	16
Chester	1	Indiana	49	Northumberland	46	Wyoming	37
Clarion	58	Jefferson	59	Perry	18	York	12
Clearfield	31	Juniata	22	Philadelphia	67		

HOW DO COUNTIES RANK FOR HEALTH FACTORS?

The blue map displays Pennsylvania’s summary ranks for **health factors**, based on weighted scores for health behaviors, clinical care, social and economic factors, and the physical environment.

Lighter shades indicate better performance in the respective summary rankings. Detailed information on the underlying measures is available at countyhealthrankings.org



County	Rank	County	Rank	County	Rank	County	Rank
Adams	10	Clinton	53	Lackawanna	47	Pike	22
Allegheny	20	Columbia	29	Lancaster	9	Potter	52
Armstrong	59	Crawford	50	Lawrence	62	Schuylkill	51
Beaver	55	Cumberland	4	Lebanon	12	Snyder	14
Bedford	34	Dauphin	28	Lehigh	26	Somerset	48
Berks	33	Delaware	13	Luzerne	58	Sullivan	40
Blair	39	Elk	11	Lycoming	46	Susquehanna	35
Bradford	57	Erie	60	McKean	61	Tioga	27
Bucks	2	Fayette	66	Mercer	31	Union	8
Butler	5	Forest	65	Mifflin	54	Venango	42
Cambria	43	Franklin	16	Monroe	37	Warren	18
Cameron	32	Fulton	44	Montgomery	1	Washington	24
Carbon	56	Greene	63	Montour	6	Wayne	25
Centre	7	Huntingdon	41	Northampton	21	Westmoreland	17
Chester	3	Indiana	64	Northumberland	45	Wyoming	30
Clarion	36	Jefferson	38	Perry	19	York	15
Clearfield	49	Juniata	23	Philadelphia	67		

2017 COUNTY HEALTH RANKINGS: MEASURES AND NATIONAL/STATE RESULTS

Measure	Description	US Median	State Overall	State Minimum	State Maximum
HEALTH OUTCOMES					
Premature death	Years of potential life lost before age 75 per 100,000 population	7,700	6,800	4,100	10,600
Poor or fair health	% of adults reporting fair or poor health	16%	15%	11%	19%
Poor physical health days	Average # of physically unhealthy days reported in past 30 days	3.8	3.5	3.0	4.1
Poor mental health days	Average # of mentally unhealthy days reported in past 30 days	3.8	3.9	3.1	4.6
Low birthweight	% of live births with low birthweight (< 2500 grams)	8%	8%	5%	11%
HEALTH FACTORS					
HEALTH BEHAVIORS					
Adult smoking	% of adults who are current smokers	17%	18%	13%	20%
Adult obesity	% of adults that report a BMI \geq 30	31%	29%	23%	39%
Food environment index	Index of factors that contribute to a healthy food environment, (0-10)	7.3	7.8	6.4	8.7
Physical inactivity	% of adults aged 20 and over reporting no leisure-time physical activity	26%	23%	16%	31%
Access to exercise opportunities	% of population with adequate access to locations for physical activity	62%	85%	39%	100%
Excessive drinking	% of adults reporting binge or heavy drinking	17%	18%	17%	22%
Alcohol-impaired driving deaths	% of driving deaths with alcohol involvement	30%	32%	10%	67%
Sexually transmitted infections	# of newly diagnosed chlamydia cases per 100,000 population	294.8	395.6	71.4	1,219.1
Teen births	# of births per 1,000 female population ages 15-19	38	25	5	48
CLINICAL CARE					
Uninsured	% of population under age 65 without health insurance	14%	10%	7%	14%
Primary care physicians	Ratio of population to primary care physicians	2,030:1	1,230:1	4,880:1	210:1
Dentists	Ratio of population to dentists	2,570:1	1,530:1	8,250:1	970:1
Mental health providers	Ratio of population to mental health providers	1,105:1	600:1	8,250:1	270:1
Preventable hospital stays	# of hospital stays for ambulatory-care sensitive conditions per 1,000 Medicare enrollees	56	52	26	93
Diabetes monitoring	% of diabetic Medicare enrollees ages 65-75 that receive HbA1c monitoring	86%	86%	80%	94%
Mammography screening	% of female Medicare enrollees ages 67-69 that receive mammography screening	61%	65%	54%	78%
SOCIAL AND ECONOMIC FACTORS					
High school graduation	% of ninth-grade cohort that graduates in four years	88%	85%	70%	95%
Some college	% of adults ages 25-44 with some post-secondary education	57%	63%	16%	78%
Unemployment	% of population aged 16 and older unemployed but seeking work	5.3%	5.1%	3.7%	7.7%
Children in poverty	% of children under age 18 in poverty	22%	19%	7%	46%
Income inequality	Ratio of household income at the 80th percentile to income at the 20th percentile	4.4	4.8	3.4	6.2
Children in single-parent households	% of children that live in a household headed by a single parent	32%	34%	19%	59%
Social associations	# of membership associations per 10,000 population	12.6	12.2	7.6	27.1
Violent crime	# of reported violent crime offenses per 100,000 population	198	333	79	1,094
Injury deaths	# of deaths due to injury per 100,000 population	77	72	41	110
PHYSICAL ENVIRONMENT					
Air pollution – particulate matter	Average daily density of fine particulate matter in micrograms per cubic meter (PM2.5)	9.2	10.4	8.2	14.7
Drinking water violations	Indicator of the presence of health-related drinking water violations. Yes - indicates the presence of a violation, No - indicates no violation.	NA	NA	No	Yes
Severe housing problems	% of households with overcrowding, high housing costs, or lack of kitchen or plumbing facilities	14%	15%	8%	24%
Driving alone to work	% of workforce that drives alone to work	81%	77%	50%	85%
Long commute – driving alone	Among workers who commute in their car alone, % commuting > 30 minutes	30%	35%	18%	58%

2017 COUNTY HEALTH RANKINGS: DATA SOURCES AND YEARS OF DATA

	Measure	Data Source	Years of Data
HEALTH OUTCOMES			
Length of Life	Premature death	National Center for Health Statistics – Mortality files	2012-2014
Quality of Life	Poor or fair health	Behavioral Risk Factor Surveillance System	2015
	Poor physical health days	Behavioral Risk Factor Surveillance System	2015
	Poor mental health days	Behavioral Risk Factor Surveillance System	2015
	Low birthweight	National Center for Health Statistics – Natality files	2008-2014
HEALTH FACTORS			
HEALTH BEHAVIORS			
Tobacco Use	Adult smoking	Behavioral Risk Factor Surveillance System	2015
Diet and Exercise	Adult obesity	CDC Diabetes Interactive Atlas	2013
	Food environment index	USDA Food Environment Atlas, Map the Meal Gap	2010 & 2014
Alcohol and Drug Use	Physical inactivity	CDC Diabetes Interactive Atlas	2013
	Access to exercise opportunities	Business Analyst, Delorme map data, ESRI, & US Census Tigerline Files	2010 & 2014
	Excessive drinking	Behavioral Risk Factor Surveillance System	2015
Sexual Activity	Alcohol-impaired driving deaths	Fatality Analysis Reporting System	2011-2015
Sexual Activity	Sexually transmitted infections	National Center for HIV/AIDS, Viral Hepatitis, STD, and TB Prevention	2014
	Teen births	National Center for Health Statistics - Natality files	2008-2014
CLINICAL CARE			
Access to Care	Uninsured	Small Area Health Insurance Estimates	2014
	Primary care physicians	Area Health Resource File/American Medical Association	2014
	Dentists	Area Health Resource File/National Provider Identification file	2015
	Mental health providers	CMS, National Provider Identification file	2016
Quality of Care	Preventable hospital stays	Dartmouth Atlas of Health Care	2014
	Diabetes monitoring	Dartmouth Atlas of Health Care	2014
	Mammography screening	Dartmouth Atlas of Health Care	2014
SOCIAL AND ECONOMIC FACTORS			
Education	High school graduation	EDFacts ¹	2014-2015
	Some college	American Community Survey	2011-2015
Employment	Unemployment	Bureau of Labor Statistics	2015
Income	Children in poverty	Small Area Income and Poverty Estimates	2015
	Income inequality	American Community Survey	2011-2015
Family and Social Support	Children in single-parent households	American Community Survey	2011-2015
	Social associations	County Business Patterns	2014
Community Safety	Violent crime	Uniform Crime Reporting – FBI	2012-2014
	Injury deaths	CDC WONDER mortality data	2011-2015
PHYSICAL ENVIRONMENT			
Air and Water Quality	Air pollution - particulate matter ²	CDC National Environmental Public Health Tracking Network	2012
	Drinking water violations	Safe Drinking Water Information System	FY2013-14
Housing and Transit	Severe housing problems	Comprehensive Housing Affordability Strategy (CHAS) data	2009-2013
	Driving alone to work	American Community Survey	2011-2015
	Long commute – driving alone	American Community Survey	2011-2015

¹ State sources used for California and Texas.

² Not available for AK and HI.

CREDITS

Report Authors

University of Wisconsin-Madison
School of Medicine and Public Health
Department of Population Health Sciences
Population Health Institute

Marjory Givens, PhD, MSPH
Amanda Jovaag, MS
Julie Willems Van Dijk, PhD, RN

Suggested citation: University of Wisconsin Population Health Institute. *County Health Rankings 2017*.

This publication would not have been possible without the following contributions:

Data

Centers for Disease Control and Prevention: National Center for Health Statistics and National Center for Chronic Disease and Health Promotion
Dartmouth Institute for Health Policy & Clinical Practice
Measure of America

Research Assistance

Paige Andrews
Keith Gennuso, PhD
Kathryn Hatchell
Melissa Marver
Elizabeth Pollock
Jennifer Robinson
Matthew Rodock, MPH
Anne Roubal, MS, PhD

Design and Communications

Forum One, Alexandria, VA
Burness
Kim Linsenmayer, MPA
Matthew Call

Communications and Outreach

Kate Kingery, MPA
Kitty Jerome, MA
Kate Konkle, MPH
Mary Bennett, MFA
Raquel Bournhonesque, MPH
Ericka Burroughs-Girardi, MA, MPH
Aliana Havrilla, MPA
Antonia Lewis, MPH, HO
Karen Odegaard, MPH
Jan O'Neill, MPA
Justin Rivas, MPH, MIPA
Attica Scott, MS
Jerry Spegman, JD
Janna West Kowalski, MS

Robert Wood Johnson Foundation

County Health Rankings & Roadmaps

Building a Culture of Health, County by County

countyhealthrankings.org



University of Wisconsin Population Health Institute
610 Walnut St, #527, Madison, WI 53726
(608) 265-8240 / info@countyhealthrankings.org