

**County Health  
Rankings & Roadmaps**

Building a Culture of Health, County by County

A Robert Wood Johnson Foundation program

# 2015 *County Health Rankings* North Carolina



A collaboration between the Robert Wood Johnson Foundation and the University of Wisconsin Population Health Institute.



Support provided by

Robert Wood Johnson Foundation

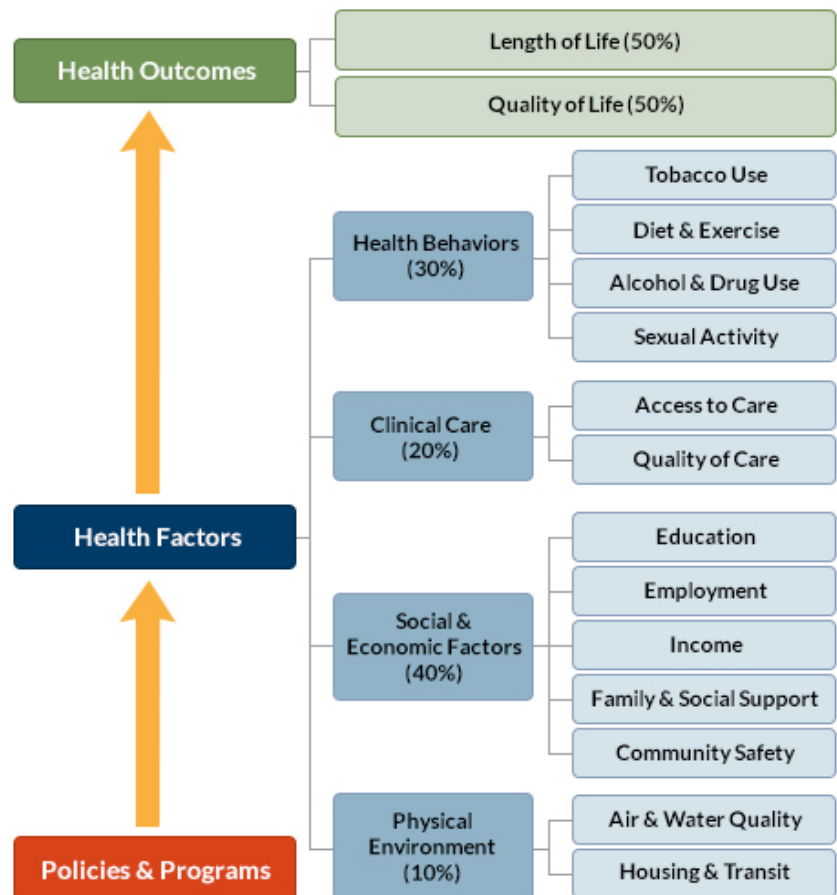


## INTRODUCTION

The *County Health Rankings & Roadmaps* program helps communities identify and implement solutions that make it easier for people to be healthy in their homes, schools, workplaces, and neighborhoods. The Robert Wood Johnson Foundation (RWJF) collaborates with the University of Wisconsin Population Health Institute (UWPHI) to bring this program to cities, counties, and states across the nation. Ranking the health of nearly every county in the nation, the *County Health Rankings* illustrate what we know when it comes to what is making people sick or healthy. The *Roadmaps to Health* and *RWJF Culture of Health Prize* show what we can do to create healthier places to live, learn, work, and play.

## WHAT ARE THE COUNTY HEALTH RANKINGS?

Published online at [countyhealthrankings.org](http://countyhealthrankings.org), the *Rankings* help counties understand what influences how healthy residents are and how long they will live. The *Rankings* are unique in their ability to measure the current overall health of each county in all 50 states. They also look at a variety of measures that affect the future health of communities, such as high school graduation rates, access to healthy foods, rates of smoking, obesity, and teen births. Communities use the *Rankings* to identify and garner support for local health improvement initiatives among government agencies, healthcare providers, community organizations, business leaders, policy makers, and the public.



## MOVING FROM DATA TO ACTION

*Roadmaps to Health* help communities bring people together to look at the many factors that influence health, select strategies that work, and make changes that will have a lasting impact. The *Roadmaps* focus on helping communities move from awareness about their county's ranking to action

to improve people's health. The *Roadmaps to Health* Action Center is a one-stop shop of information to help any community member or leader who wants to improve their community's health by addressing factors that we know influence health, such as education, income, and community safety.

Within the Action Center you will find:

- Online step-by-step guidance and tools to move through the Action Cycle
- *What Works for Health* – a searchable database of evidence-informed policies and programs that can improve health

- Webinars featuring local community members who share their tips on how to build a healthier community
- Community coaches, located across the nation, who provide customized consultation to local leaders who request guidance in how to accelerate their efforts to improve health. You can contact a coach by activating the Get Help button at [countyhealthrankings.org](http://countyhealthrankings.org)

## LEARNING FROM OTHERS

At [countyhealthrankings.org](http://countyhealthrankings.org), we feature stories from communities across the nation who have used data from the *County Health Rankings* or have engaged in strategies to improve health. The *RWJF Culture of Health Prize* recognizes communities that are creating powerful partnerships and deep commitments to enable everyone in our diverse society to lead healthy lives now and for generations to come. The Prize is awarded annually by RWJF to honor communities that are working to build a Culture of Health by implementing solutions that give everyone the opportunity for a healthy life. In 2015, up to 10 winning communities will each receive a \$25,000 cash prize and have their stories shared broadly with the goal of inspiring locally driven change across the nation.

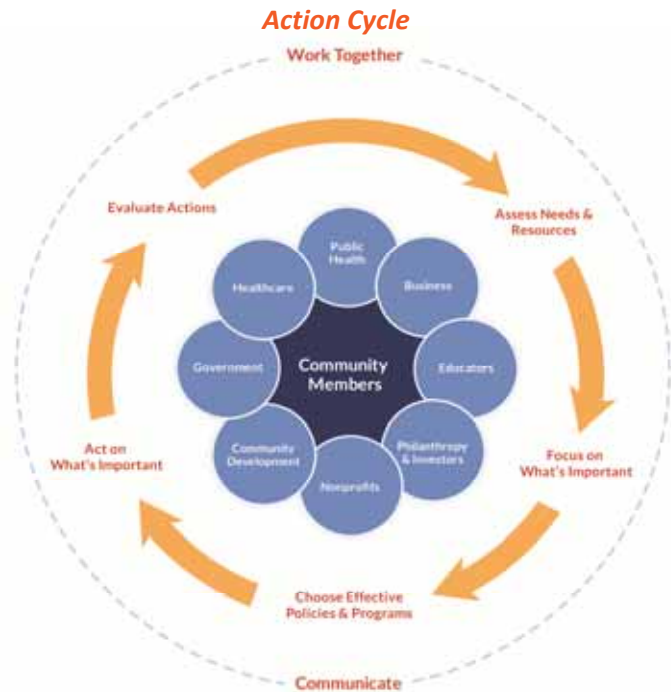
Prize winners are selected based on how well they demonstrate their community's achievement on their journey to a Culture of Health in the following areas:

- Defining health in the broadest possible terms
- Committing to sustainable systems changes and long-term policy-oriented solutions
- Cultivating a shared and deeply held belief in the importance of equal opportunity for health
- Harnessing the collective power of leaders, partners, and community members
- Securing and making the most of resources
- Measuring and sharing progress and results

Visit [countyhealthrankings.org](http://countyhealthrankings.org) or [rwjf.org/prize](http://rwjf.org/prize) to learn about the work of past Prize winners and the application process.

## HOW CAN YOU GET INVOLVED?

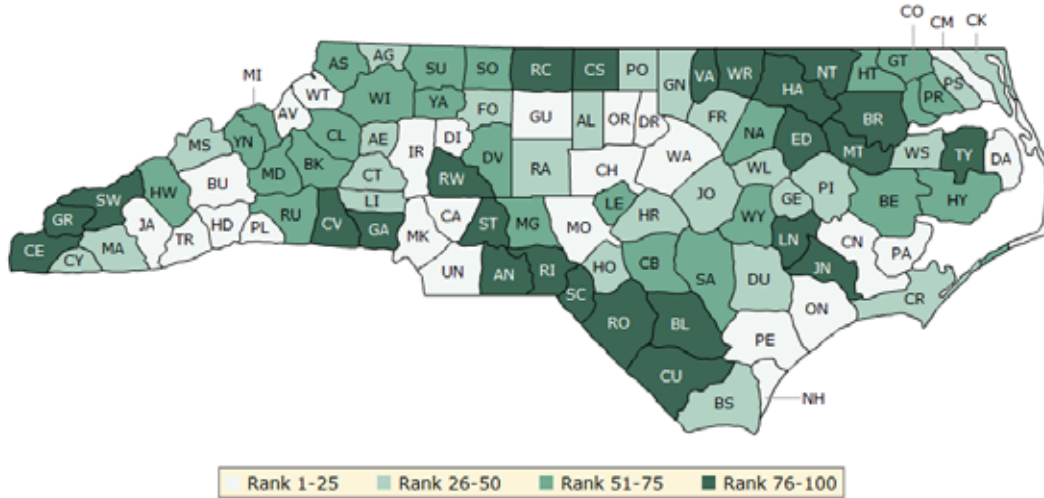
You might want to contact your local affiliate of United Way Worldwide or the National Association of Counties – their national parent organizations have partnered with us to raise awareness and stimulate action to improve health in their local members' communities. By connecting with other leaders interested in improving health, you can make a difference in your community. In communities large and small, people from all walks of life are taking ownership and action to improve health. Visit [countyhealthrankings.org](http://countyhealthrankings.org) to get ideas and guidance on how you can take action in your community. Working with others, you can improve the health of your community.



### HOW DO COUNTIES RANK FOR HEALTH OUTCOMES?

The green map below shows the distribution of North Carolina's **health outcomes**, based on an equal weighting of length and quality of life.

Lighter colors indicate better performance in the respective summary rankings. Detailed information on the underlying measures is available at [countyhealthrankings.org](http://countyhealthrankings.org).

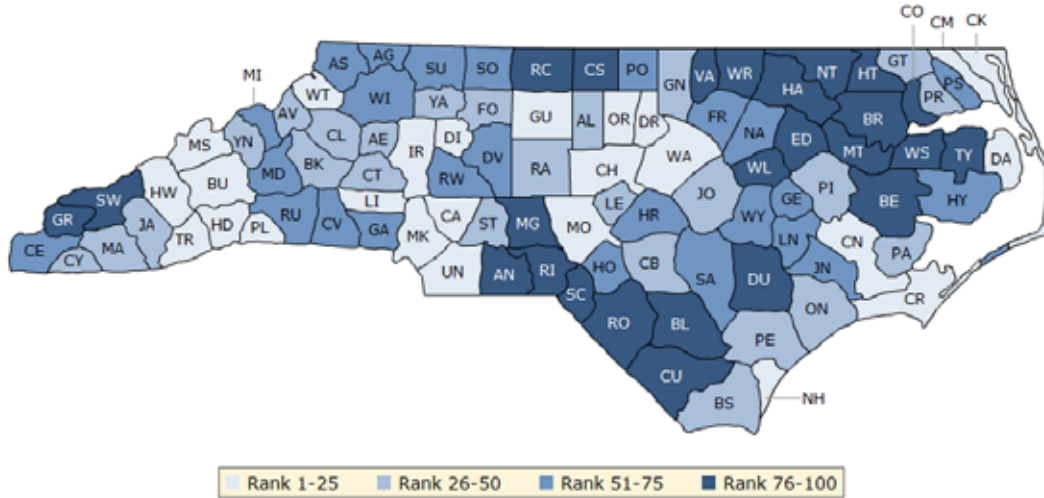


County	Rank	County	Rank	County	Rank	County	Rank
Alamance	34	Cumberland	73	Johnston	32	Randolph	38
Alexander	50	Currituck	26	Jones	89	Richmond	96
Alleghany	33	Dare	15	Lee	68	Robeson	95
Anson	84	Davidson	59	Lenoir	90	Rockingham	81
Ashe	52	Davie	12	Lincoln	31	Rowan	76
Avery	25	Duplin	42	Macon	40	Rutherford	72
Beaufort	63	Durham	11	Madison	28	Sampson	70
Bertie	82	Edgecombe	87	Martin	80	Scotland	98
Bladen	88	Forsyth	29	McDowell	75	Stanly	78
Brunswick	36	Franklin	46	Mecklenburg	5	Stokes	62
Buncombe	14	Gaston	77	Mitchell	57	Surry	53
Burke	65	Gates	66	Montgomery	55	Swain	94
Cabarrus	7	Graham	92	Moore	16	Transylvania	6
Caldwell	71	Granville	30	Nash	58	Tyrrell	93
Camden	19	Greene	49	New Hanover	8	Union	4
Carteret	35	Guilford	10	Northampton	91	Vance	97
Caswell	85	Halifax	99	Onslow	22	Wake	2
Catawba	45	Harnett	44	Orange	1	Warren	79
Chatham	9	Haywood	56	Pamlico	21	Washington	37
Cherokee	83	Henderson	13	Pasquotank	43	Watauga	3
Chowan	61	Hertford	74	Pender	20	Wayne	54
Clay	48	Hoke	47	Perquimans	60	Wilkes	67
Cleveland	86	Hyde	64	Person	27	Wilson	41
Columbus	100	Iredell	18	Pitt	39	Yadkin	51
Craven	23	Jackson	24	Polk	17	Yancey	69

### HOW DO COUNTIES RANK FOR HEALTH FACTORS?

The blue map displays North Carolina's summary ranks for **health factors**, based on weighted scores for health behaviors, clinical care, social and economic factors, and the physical environment.

Lighter colors indicate better performance in the respective summary rankings. Detailed information on the underlying measures is available at [countyhealthrankings.org](http://countyhealthrankings.org).



County	Rank	County	Rank	County	Rank	County	Rank
Alamance	48	Cumberland	45	Johnston	40	Randolph	47
Alexander	29	Currituck	22	Jones	71	Richmond	95
Alleghany	58	Dare	24	Lee	49	Robeson	100
Anson	88	Davidson	56	Lenoir	70	Rockingham	87
Ashe	66	Davie	16	Lincoln	18	Rowan	57
Avery	37	Duplin	85	Macon	30	Rutherford	69
Beaufort	81	Durham	11	Madison	25	Sampson	62
Bertie	86	Edgecombe	97	Martin	76	Scotland	99
Bladen	93	Forsyth	27	McDowell	54	Stanly	34
Brunswick	32	Franklin	53	Mecklenburg	14	Stokes	74
Buncombe	6	Gaston	60	Mitchell	59	Surry	64
Burke	46	Gates	39	Montgomery	78	Swain	94
Cabarrus	10	Graham	84	Moore	13	Transylvania	15
Caldwell	36	Granville	43	Nash	67	Tyrrell	77
Camden	4	Greene	73	New Hanover	12	Union	3
Carteret	21	Guilford	20	Northampton	90	Vance	98
Caswell	91	Halifax	96	Onslow	28	Wake	2
Catawba	26	Harnett	63	Orange	1	Warren	92
Chatham	7	Haywood	23	Pamlico	35	Washington	79
Cherokee	52	Henderson	5	Pasquotank	68	Watauga	9
Chowan	83	Hertford	80	Pender	42	Wayne	51
Clay	33	Hoke	75	Perquimans	41	Wilkes	61
Cleveland	55	Hyde	72	Person	65	Wilson	82
Columbus	89	Iredell	17	Pitt	44	Yadkin	50
Craven	19	Jackson	38	Polk	8	Yancey	31

## 2015 COUNTY HEALTH RANKINGS: MEASURES AND NATIONAL/STATE RESULTS

Measure	Description	US Median	State Overall	State Minimum	State Maximum
<b>HEALTH OUTCOMES</b>					
Premature death	Years of potential life lost before age 75 per 100,000 population	7681	7212	4569	13560
Poor or fair health	% of adults reporting fair or poor health	17%	18%	11%	38%
Poor physical health days	Average # of physically unhealthy days reported in past 30 days	3.7	3.6	2.0	6.2
Poor mental health days	Average # of mentally unhealthy days reported in past 30 days	3.5	3.4	2.0	6.2
Low birthweight	% of live births with low birthweight (< 2500 grams)	8%	9.1%	6.1%	14.2%
<b>HEALTH FACTORS</b>					
<b>HEALTH BEHAVIORS</b>					
Adult smoking	% of adults who are current smokers	21%	20%	12%	44%
Adult obesity	% of adults that report a BMI $\geq$ 30	31%	29%	21%	40%
Food environment index	Index of factors that contribute to a healthy food environment, (0-10)	7.3	6.6	4.1	8.4
Physical inactivity	% of adults aged 20 and over reporting no leisure-time physical activity	27%	25%	16%	35%
Access to exercise opportunities	% of population with adequate access to locations for physical activity	65%	76%	7%	100%
Excessive drinking	% of adults reporting binge or heavy drinking	16%	13%	6%	28%
Alcohol-impaired driving deaths	% of driving deaths with alcohol involvement	31%	33%	0%	68%
Sexually transmitted infections	# of newly diagnosed chlamydia cases per 100,000 population	291	519	57	1153
Teen births	# of births per 1,000 female population ages 15-19	41	42	10	76
<b>CLINICAL CARE</b>					
Uninsured	% of population under age 65 without health insurance	17%	19%	15%	27%
Primary care physicians	Ratio of population to primary care physicians	2015:1	1448:1	16845:1	556:1
Dentists	Ratio of population to dentists	2670:1	1970:1	13786:1	542:1
Mental health providers	Ratio of population to mental health providers	1128:1	472:1	11650:1	168:1
Preventable hospital stays	# of hospital stays for ambulatory-care sensitive conditions per 1,000 Medicare enrollees	65.3	57	29	106
Diabetic monitoring	% of diabetic Medicare enrollees ages 65-75 that receive HbA1c monitoring	85%	89%	49%	95%
Mammography screening	% of female Medicare enrollees ages 67-69 that receive mammography screening	61%	68.2%	54.9%	81.7%
<b>SOCIAL AND ECONOMIC FACTORS</b>					
High school graduation	% of ninth-grade cohort that graduates in four years	85%	81%	68%	93%
Some college	% of adults ages 25-44 with some post-secondary education	56%	63.8%	33.6%	78.9%
Unemployment	% of population aged 16 and older unemployed but seeking work	7%	8.0%	5.3%	14.6%
Children in poverty	% of children under age 18 in poverty	24%	25%	13%	46%
Income inequality	Ratio of household income at the 80th percentile to income at the 20th percentile	4.4	4.8	3.5	7.8
Children in single-parent households	% of children that live in a household headed by single parent	31%	36%	22%	69%
Social associations	# of membership associations per 10,000 population	12.6	11.7	6.7	26.6
Violent crime	# of reported violent crime offenses per 100,000 population	199	355	70	819
Injury deaths	# of deaths due to injury per 100,000 population	73.8	64	36	123
<b>PHYSICAL ENVIRONMENT</b>					
Air pollution – particulate matter	Average daily density of fine particulate matter in micrograms per cubic meter (PM2.5)	11.9	12.3	11.4	13.4
Drinking water violations	% of population potentially exposed to water exceeding a violation limit during the past year	1.0%	4%	0%	77%
Severe housing problems	% of households with overcrowding, high housing costs, or lack of kitchen or plumbing facilities	14%	16%	11%	25%
Driving alone to work	% of workforce that drives alone to work	80%	81%	58%	90%
Long commute – driving alone	Among workers who commute in their car alone, % commuting > 30 minutes	29%	30%	15%	64%

## 2015 COUNTY HEALTH RANKINGS: DATA SOURCES AND YEARS OF DATA

	Measure	Data Source	Years of Data
<b>HEALTH OUTCOMES</b>			
<b>Length of Life</b>	Premature death	National Center for Health Statistics – Mortality files	2010-2012
<b>Quality of Life</b>	Poor or fair health	Behavioral Risk Factor Surveillance System	2006-2012
	Poor physical health days	Behavioral Risk Factor Surveillance System	2006-2012
	Poor mental health days	Behavioral Risk Factor Surveillance System	2006-2012
	Low birthweight	National Center for Health Statistics – Natality files	2006-2012
<b>HEALTH FACTORS</b>			
<b>HEALTH BEHAVIORS</b>			
<b>Tobacco Use</b>	Adult smoking	Behavioral Risk Factor Surveillance System	2006-2012
<b>Diet and Exercise</b>	Adult obesity	CDC Diabetes Interactive Atlas	2011
	Food environment index	USDA Food Environment Atlas, Map the Meal Gap	2012
	Physical inactivity	CDC Diabetes Interactive Atlas	2011
	Access to exercise opportunities	Business Analyst, Delorme map data, ESRI, & US Census Tigerline Files	2010 & 2013
<b>Alcohol and Drug Use</b>	Excessive drinking	Behavioral Risk Factor Surveillance System	2006-2012
	Alcohol-impaired driving deaths	Fatality Analysis Reporting System	2009-2013
<b>Sexual Activity</b>	Sexually transmitted infections	National Center for HIV/AIDS, Viral Hepatitis, STD, and TB Prevention	2012
	Teen births	National Center for Health Statistics – Natality files	2006-2012
<b>CLINICAL CARE</b>			
<b>Access to Care</b>	Uninsured	Small Area Health Insurance Estimates	2012
	Primary care physicians	Area Health Resource File/American Medical Association	2012
	Dentists	Area Health Resource File/National Provider Identification file	2013
	Mental health providers	CMS, National Provider Identification file	2014
<b>Quality of Care</b>	Preventable hospital stays	Dartmouth Atlas of Health Care	2012
	Diabetic monitoring	Dartmouth Atlas of Health Care	2012
	Mammography screening	Dartmouth Atlas of Health Care	2012
<b>SOCIAL AND ECONOMIC FACTORS</b>			
<b>Education</b>	High school graduation	data.gov, supplemented w/ National Center for Education Statistics	2011-2012
	Some college	American Community Survey	2009-2013
<b>Employment</b>	Unemployment	Bureau of Labor Statistics	2013
<b>Income</b>	Children in poverty	Small Area Income and Poverty Estimates	2013
	Income inequality	American Community Survey	2009-2013
<b>Family and Social Support</b>	Children in single-parent households	American Community Survey	2009-2013
	Social associations	County Business Patterns	2012
<b>Community Safety</b>	Violent crime	Uniform Crime Reporting – FBI	2010-2012
	Injury deaths	CDC WONDER mortality data	2008-2012
<b>PHYSICAL ENVIRONMENT</b>			
<b>Air and Water Quality</b>	Air pollution – particulate matter <sup>1</sup>	CDC WONDER environmental data	2011
	Drinking water violations	Safe Drinking Water Information System	FY2013-14
<b>Housing and Transit</b>	Severe housing problems	Comprehensive Housing Affordability Strategy (CHAS) data	2007-2011
	Driving alone to work	American Community Survey	2009-2013
	Long commute – driving alone	American Community Survey	2009-2013

<sup>1</sup> Not available for AK and HI.

## CREDITS

### Report Authors

University of Wisconsin-Madison  
School of Medicine and Public Health  
Department of Population Health Sciences  
Population Health Institute

Bridget Catlin, PhD, MHSA  
Amanda Jovaag, MS  
Julie Willems Van Dijk, PhD, RN

Suggested citation: University of Wisconsin Population Health Institute. *County Health Rankings 2015*

This publication would not have been possible without the following contributions:

### Data

Centers for Disease Control and Prevention: National Center for Health Statistics and Division of Behavioral Surveillance  
Dartmouth Institute for Health Policy & Clinical Practice

### Research Assistance

Jennifer Buechner  
Kathryn Hatchell  
Hyojun Park, MA  
Elizabeth Pollock  
Jennifer Robinson  
Matthew Rodock, MPH  
Anne Roubal, MS

### Communications and Outreach

Burness  
Mary Bennett, MFA  
Matthew Call  
Kitty Jerome, MA  
Stephanie Johnson, MSW  
Kate Konkle, MPH  
Jan O'Neill, MPA

### Design

Forum One, Alexandria, VA

### Robert Wood Johnson Foundation

Abbey Cofsky, MPH  
Andrea Ducas, MPH  
Michelle Larkin, JD, MS, RN  
James Marks, MD, MPH  
Joe Marx  
Donald Schwarz, MD, MPH  
Kathryn Wehr, MPH

## County Health Rankings & Roadmaps

Building a Culture of Health, County by County

[countyhealthrankings.org](http://countyhealthrankings.org)



University of Wisconsin Population Health Institute  
610 Walnut St, #527, Madison, WI 53726  
(608) 265-8240 / [info@countyhealthrankings.org](mailto:info@countyhealthrankings.org)