

**County Health
Rankings & Roadmaps**

Building a Culture of Health, County by County

A Robert Wood Johnson Foundation program

2014 *Rankings* New York



A collaboration between the Robert Wood Johnson Foundation and the University of Wisconsin Population Health Institute.



Support provided by

Robert Wood Johnson Foundation



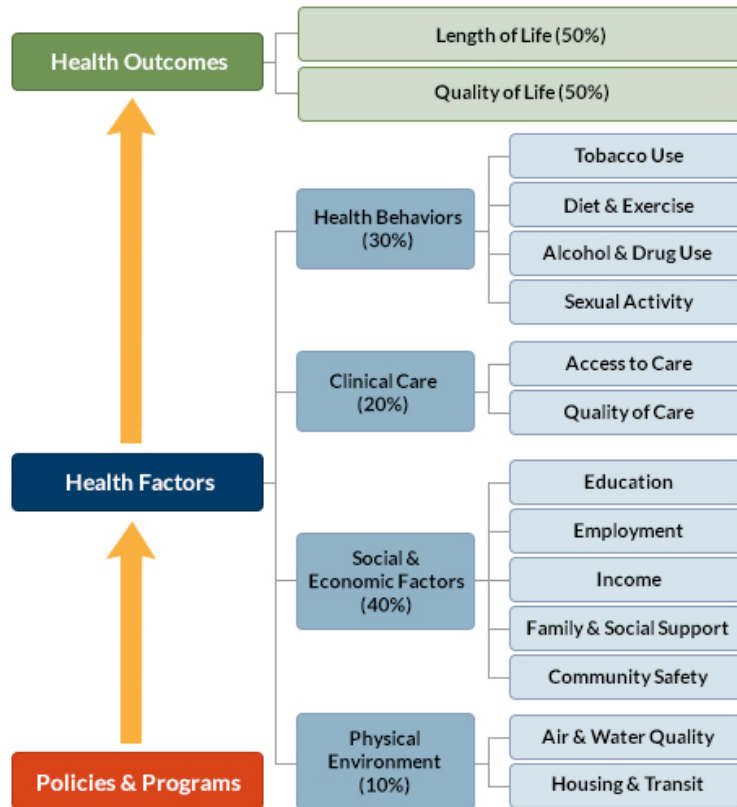
INSIDE FRONT COVER – INTENTIONALLY BLANK

INTRODUCTION

The *County Health Rankings & Roadmaps* program helps communities identify and implement solutions that make it easier for people to be healthy in their schools, workplaces, and neighborhoods. Ranking the health of nearly every county in the nation, the *County Health Rankings* illustrate *what we know* when it comes to what is making people sick or healthy. The *Roadmaps* show *what we can do* to create healthier places to live, learn, work, and play. The Robert Wood Johnson Foundation (RWJF) collaborates with the University of Wisconsin Population Health Institute (UWPHI) to bring this program to cities, counties, and states across the nation.

WHAT ARE THE COUNTY HEALTH RANKINGS?

The *County Health Rankings* measure the health of nearly every county in the nation. Published online at countyhealthrankings.org, the *Rankings* help counties understand what influences how healthy residents are and how long they will live. The *Rankings* look at a variety of measures that affect health, such as high school graduation rates, access to healthy foods, rates of smoking, obesity, and teen births. Based on data available for each county, the *Rankings* are unique in their ability to measure the overall health of each county in all 50 states. They have been used to garner support for local health improvement initiatives among government agencies, healthcare providers, community organizations, business leaders, policy makers, and the public.



HOW ARE PEOPLE USING THE RANKINGS?

- Ø Highlighting community success
- Ø Identifying root causes of poor health
- Ø Supporting policy change
- Ø Engaging communities in health improvement

For more information, visit countyhealthrankings.org

WHAT ARE THE ROADMAPS TO HEALTH?

The *Roadmaps to Health* help communities bring people together to look at the many factors that influence health, select strategies that work, and make changes that will have a lasting impact. The *Roadmaps* focus on helping communities determine what they can do and what they can learn from others.

What You Can Do

The *Roadmaps to Health* Action Center provides step-by-step guides, tools, and webinars to help groups working to improve the health of their communities. Community Coaches also provide customized consultation to local communities that have demonstrated a willingness to address factors that we know influence health, such as education, income, and community safety.

The Action Center also features *What Works for Health* – a searchable database of evidence-informed policies and programs that can improve health.

Learning From Others

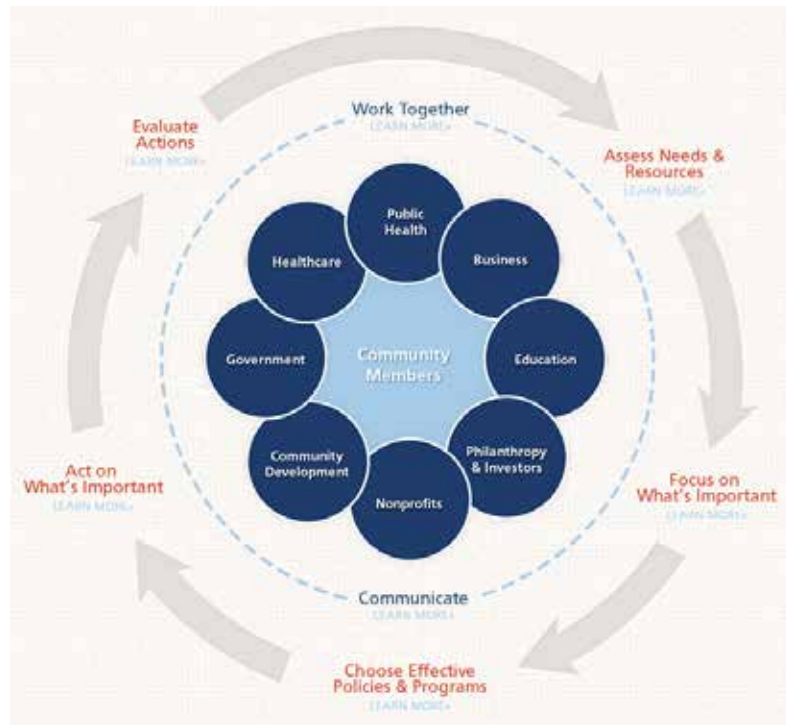
Honoring the efforts of communities working at the forefront of health improvement, the Robert Wood

Johnson Foundation annually awards the *RWJF Culture of Health Prize* to outstanding communities that are working toward better health. The *Prize* recognizes communities with strong and diverse partnerships that are coming together with a shared vision and commitment to address multiple factors that affect health and make lasting changes that create a culture of health for all. Visit countyhealthrankings.org or rwjf.org/prize to learn about the work of past prize winners.

At countyhealthrankings.org, we also feature stories from communities across the nation who have used data from the *County Health Rankings* or have engaged in strategies to improve health. For example, you can learn from the successes and challenges of the 30 *Roadmaps to Health* Community Grantees. These grantees are working to create positive policy or systems changes that address social and economic factors that influence how healthy people are and how long they live, such as education and community safety. You might also want to contact your local affiliate of United Way Worldwide, the National Business Coalition on Health, or the National Association of Counties - their national parent organizations have partnered with us to raise awareness and stimulate action to improve health in their local members' communities.

How can you get involved?

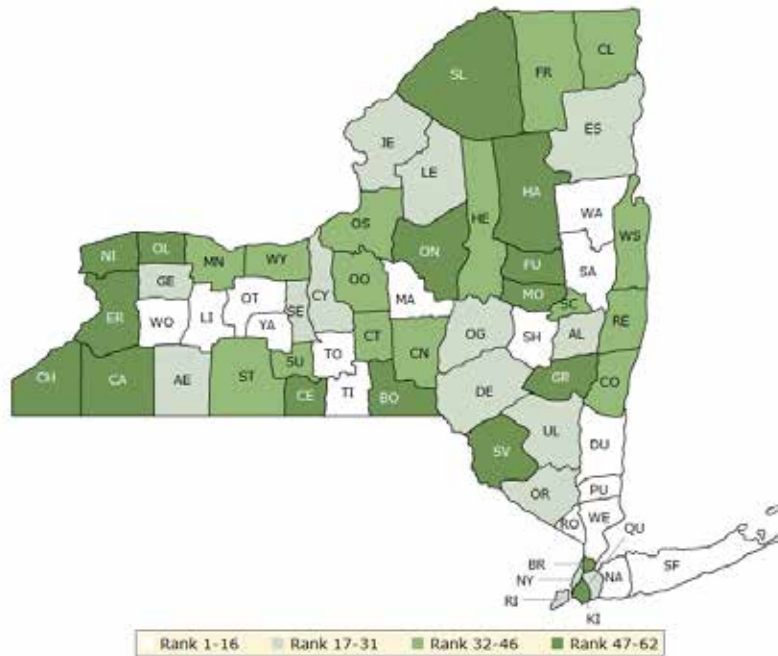
In communities large and small, people from all walks of life are taking ownership and action to improve health. Visit countyhealthrankings.org to get ideas and guidance on how you can take action in your community. Working with others, you can improve the health of your community.



The green map below shows the distribution of New York's **health outcomes**, based on an equal weighting of length and quality of life.

Lighter colors indicate better performance in the respective summary rankings. Detailed information on the underlying measures is available on our web site.

HEALTH OUTCOMES RANKS

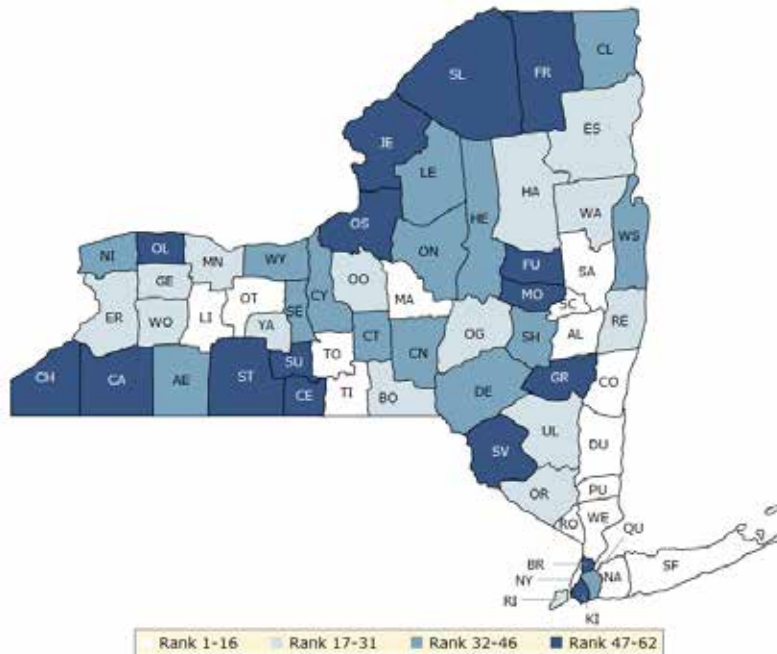


County	Rank	County	Rank	County	Rank	County	Rank
Albany	30	Franklin	43	Oneida	51	Seneca	26
Allegany	20	Fulton	56	Onondaga	35	St. Lawrence	55
Bronx	62	Genesee	27	Ontario	10	Steuben	40
Broome	48	Greene	57	Orange	23	Suffolk	15
Cattaraugus	52	Hamilton	58	Orleans	49	Sullivan	61
Cayuga	19	Herkimer	42	Oswego	37	Tioga	12
Chautauqua	54	Jefferson	31	Otsego	25	Tompkins	2
Chemung	60	Kings	50	Putnam	4	Ulster	29
Chenango	33	Lewis	21	Queens	18	Warren	13
Clinton	32	Livingston	1	Rensselaer	34	Washington	36
Columbia	46	Madison	14	Richmond	28	Wayne	45
Cortland	41	Monroe	38	Rockland	3	Westchester	7
Delaware	24	Montgomery	47	Saratoga	5	Wyoming	16
Dutchess	11	Nassau	6	Schenectady	39	Yates	8
Erie	53	New York	22	Schoharie	9		
Essex	17	Niagara	59	Schuyler	44		

The blue map displays New York’s summary ranks for **health factors**, based on weighted scores for health behaviors, clinical care, social and economic factors, and the physical environment.

Lighter colors indicate better performance in the respective summary rankings. Detailed information on the underlying measures is available on our web site.

HEALTH FACTORS RANKS



County	Rank	County	Rank	County	Rank	County	Rank
Albany	10	Franklin	53	Oneida	35	Seneca	33
Allegany	44	Fulton	50	Onondaga	20	St. Lawrence	56
Bronx	62	Genesee	26	Ontario	7	Steuben	54
Broome	30	Greene	51	Orange	21	Suffolk	8
Cattaraugus	55	Hamilton	22	Orleans	61	Sullivan	60
Cayuga	42	Herkimer	39	Oswego	58	Tioga	16
Chautauqua	48	Jefferson	52	Otsego	17	Tompkins	2
Chemung	49	Kings	57	Putnam	4	Ulster	29
Chenango	41	Lewis	46	Queens	43	Warren	19
Clinton	34	Livingston	12	Rensselaer	18	Washington	40
Columbia	13	Madison	14	Richmond	27	Wayne	37
Cortland	32	Monroe	24	Rockland	6	Westchester	5
Delaware	36	Montgomery	59	Saratoga	3	Wyoming	31
Dutchess	9	Nassau	1	Schenectady	15	Yates	28
Erie	23	New York	11	Schoharie	38		
Essex	25	Niagara	45	Schuyler	47		

Summary Health Outcomes & Health Factors Rankings

Counties receive two ranks:

- Health Outcomes
- Health Factors

Each of these ranks represents a weighted summary of a number of measures.

Health outcomes represent how healthy a county is while health factors represent what influences the health of the county.

Rank	Health Outcomes	Rank	Health Factors
1	Livingston	1	Nassau
2	Tompkins	2	Tompkins
3	Rockland	3	Saratoga
4	Putnam	4	Putnam
5	Saratoga	5	Westchester
6	Nassau	6	Rockland
7	Westchester	7	Ontario
8	Yates	8	Suffolk
9	Schoharie	9	Dutchess
10	Ontario	10	Albany
11	Dutchess	11	New York
12	Tioga	12	Livingston
13	Warren	13	Columbia
14	Madison	14	Madison
15	Suffolk	15	Schenectady
16	Wyoming	16	Tioga
17	Essex	17	Otsego
18	Queens	18	Rensselaer
19	Cayuga	19	Warren
20	Allegany	20	Onondaga
21	Lewis	21	Orange
22	New York	22	Hamilton
23	Orange	23	Erie
24	Delaware	24	Monroe
25	Otsego	25	Essex
26	Seneca	26	Genesee
27	Genesee	27	Richmond
28	Richmond	28	Yates
29	Ulster	29	Ulster
30	Albany	30	Broome
31	Jefferson	31	Wyoming
32	Clinton	32	Cortland
33	Chenango	33	Seneca
34	Rensselaer	34	Clinton
35	Onondaga	35	Oneida
36	Washington	36	Delaware
37	Oswego	37	Wayne
38	Monroe	38	Schoharie
39	Schenectady	39	Herkimer
40	Steuben	40	Washington

Rank	Health Outcomes	Rank	Health Factors
41	Cortland	41	Chenango
42	Herkimer	42	Cayuga
43	Franklin	43	Queens
44	Schuyler	44	Allegany
45	Wayne	45	Niagara
46	Columbia	46	Lewis
47	Montgomery	47	Schuyler
48	Broome	48	Chautauqua
49	Orleans	49	Chemung
50	Kings	50	Fulton
51	Oneida	51	Greene
52	Cattaraugus	52	Jefferson
53	Erie	53	Franklin
54	Chautauqua	54	Steuben
55	St. Lawrence	55	Cattaraugus
56	Fulton	56	St. Lawrence
57	Greene	57	Kings
58	Hamilton	58	Oswego
59	Niagara	59	Montgomery
60	Chemung	60	Sullivan
61	Sullivan	61	Orleans
62	Bronx	62	Bronx

2014 County Health Rankings: Measures, Data Sources, and Years of Data

	Measure	Data Source	Years of Data
HEALTH OUTCOMES			
Length of Life	Premature death	National Center for Health Statistics	2008-2010
Quality of Life	Poor or fair health	Behavioral Risk Factor Surveillance System	2006-2012
	Poor physical health days	Behavioral Risk Factor Surveillance System	2006-2012
	Poor mental health days	Behavioral Risk Factor Surveillance System	2006-2012
	Low birthweight	National Center for Health Statistics	2005-2011
HEALTH FACTORS			
HEALTH BEHAVIORS			
Tobacco Use	Adult smoking	Behavioral Risk Factor Surveillance System	2006-2012
Diet and Exercise	Adult obesity	National Center for Chronic Disease Prevention and Health Promotion	2010
	Food environment index	USDA Food Environment Atlas, Map the Meal Gap	2010-2011
	Physical inactivity	National Center for Chronic Disease Prevention and Health Promotion	2010
	Access to exercise opportunities	OneSource Global Business Browser, Delorme map data, ESRI, & US Census Tigerline Files	2010 & 2012
Alcohol and Drug Use	Excessive drinking	Behavioral Risk Factor Surveillance System	2006-2012
	Alcohol-impaired driving deaths	Fatality Analysis Reporting System	2008-2012
Sexual Activity	Sexually transmitted infections	National Center for HIV/AIDS, Viral Hepatitis, STD, and TB prevention	2011
	Teen births	National Center for Health Statistics	2005-2011
CLINICAL CARE			
Access to Care	Uninsured	Small Area Health Insurance Estimates	2011
	Primary care physicians	HRSA Area Resource File	2011
	Dentists	HRSA Area Resource File	2012
	Mental health providers	CMS, National Provider Identification	2013
Quality of Care	Preventable hospital stays	Medicare/Dartmouth Institute	2011
	Diabetic screening	Medicare/Dartmouth Institute	2011
	Mammography screening	Medicare/Dartmouth Institute	2011
SOCIAL AND ECONOMIC FACTORS			
Education	High school graduation	data.gov, supplemented with National Center for Education Statistics	2010-2011
	Some college	American Community Survey	2008-2012
Employment	Unemployment	Bureau of Labor Statistics	2012
Income	Children in poverty	Small Area Income and Poverty Estimates	2012
Family and Social Support	Inadequate social support	Behavioral Risk Factor Surveillance System	2005-2010
	Children in single-parent households	American Community Survey	2008-2012
Community Safety	Violent crime	Uniform Crime Reporting - FBI	2009-2011
	Injury deaths	CDC WONDER	2006-2010
PHYSICAL ENVIRONMENT			
Air and Water Quality	Air pollution - particulate matter ¹	CDC WONDER	2011
	Drinking water violations	Safe Drinking Water Information System	FY 2012-2013
Housing and Transit	Severe housing problems	HUD, Comprehensive Housing Affordability Strategy	2006-2010
	Driving alone to work	American Community Survey	2008-2012
	Long commute – driving alone	American Community Survey	2008-2012

¹ Not available for AK and HI.

CREDITS

Report Authors

University of Wisconsin-Madison
School of Medicine and Public Health
Department of Population Health Sciences
Population Health Institute

Bridget Catlin, PhD, MHSA
Amanda Jovaag, MS
Julie Willems Van Dijk, PhD, RN
Patrick Remington, MD, MPH

This publication would not have been possible without the following contributions:

Data

Centers for Disease Control and Prevention: National Center for Health Statistics and Division of Behavioral Surveillance
Dartmouth Institute for Health Policy & Clinical Practice

Research Assistance

Jennifer Buechner
Hyojun Park, MA
Elizabeth Pollock
Jennifer Robinson
Matthew Rodock, MPH
Anne Roubal, MS

Communications and Outreach

Burness Communications
Alison Bergum, MPA
Matthew Call
Kate Konkle, MPH
Kitty Jerome, MA
Karen Odegaard, MPH
Jan O'Neill, MPA

Design

Forum One, Alexandria, VA

Robert Wood Johnson Foundation

Abbey Cofsky, MPH – Senior Program Officer
Michelle Larkin, JD, MS, RN – Assistant Vice-President, Program Portfolios
Marjorie Paloma, MPH – Senior Policy Advisor
James S. Marks, MD, MPH – Senior Vice-President and Director, Program Portfolios
Joe Marx – Senior Communications Officer

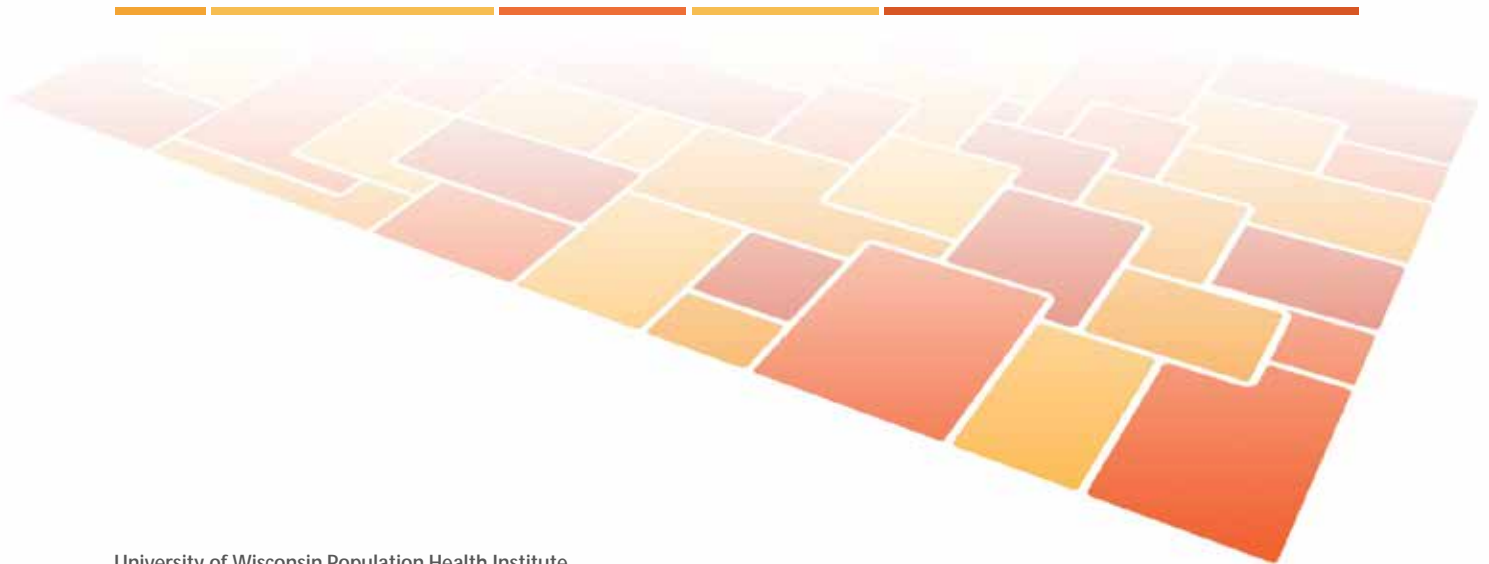
Suggested citation: University of Wisconsin Population Health Institute. *County Health Rankings 2014*.

INSIDE BACK COVER – INTENTIONALLY BLANK

County Health Rankings & Roadmaps

Building a Culture of Health, County by County

countyhealthrankings.org



University of Wisconsin Population Health Institute
610 Walnut St, #524, Madison, WI 53726
(608) 265-8240 / info@countyhealthrankings.org

