

**County Health
Rankings & Roadmaps**

Building a Culture of Health, County by County

A Robert Wood Johnson Foundation program

2014 *Rankings* Minnesota



A collaboration between the Robert Wood Johnson Foundation and the University of Wisconsin Population Health Institute.



Support provided by

Robert Wood Johnson Foundation



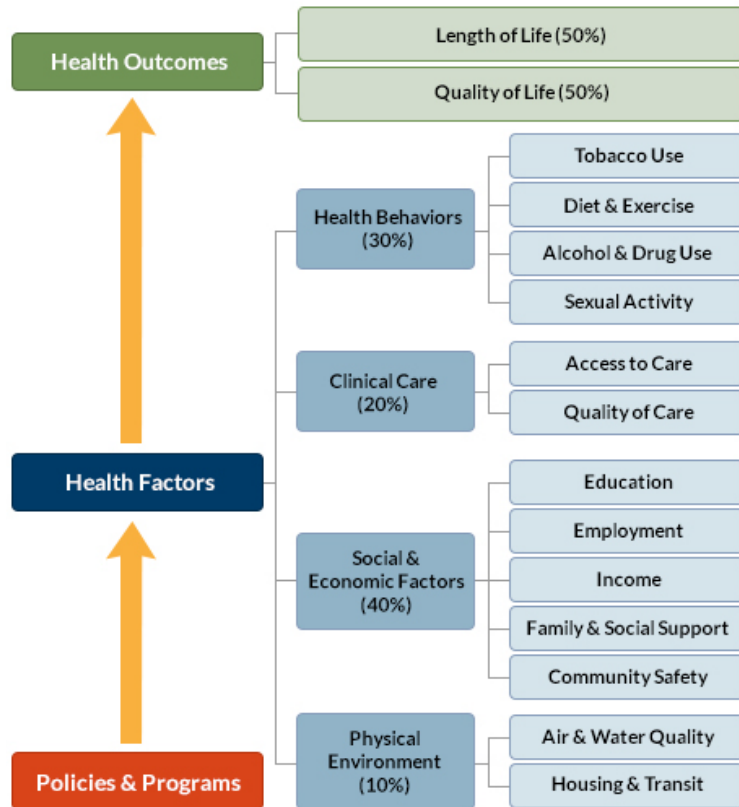
INSIDE FRONT COVER – INTENTIONALLY BLANK

INTRODUCTION

The *County Health Rankings & Roadmaps* program helps communities identify and implement solutions that make it easier for people to be healthy in their schools, workplaces, and neighborhoods. Ranking the health of nearly every county in the nation, the *County Health Rankings* illustrate *what we know* when it comes to what is making people sick or healthy. The *Roadmaps* show *what we can do* to create healthier places to live, learn, work, and play. The Robert Wood Johnson Foundation (RWJF) collaborates with the University of Wisconsin Population Health Institute (UWPHI) to bring this program to cities, counties, and states across the nation.

WHAT ARE THE COUNTY HEALTH RANKINGS?

The *County Health Rankings* measure the health of nearly every county in the nation. Published online at countyhealthrankings.org, the *Rankings* help counties understand what influences how healthy residents are and how long they will live. The *Rankings* look at a variety of measures that affect health, such as high school graduation rates, access to healthy foods, rates of smoking, obesity, and teen births. Based on data available for each county, the *Rankings* are unique in their ability to measure the overall health of each county in all 50 states. They have been used to garner support for local health improvement initiatives among government agencies, healthcare providers, community organizations, business leaders, policy makers, and the public.



HOW ARE PEOPLE USING THE RANKINGS?

- Ø Highlighting community success
- Ø Identifying root causes of poor health
- Ø Supporting policy change
- Ø Engaging communities in health improvement

For more information, visit countyhealthrankings.org

WHAT ARE THE ROADMAPS TO HEALTH?

The *Roadmaps to Health* help communities bring people together to look at the many factors that influence health, select strategies that work, and make changes that will have a lasting impact. The *Roadmaps* focus on helping communities determine what they can do and what they can learn from others.

What You Can Do

The *Roadmaps to Health* Action Center provides step-by-step guides, tools, and webinars to help groups working to improve the health of their communities. Community Coaches also provide customized consultation to local communities that have demonstrated a willingness to address factors that we know influence health, such as education, income, and community safety.

The Action Center also features *What Works for Health* – a searchable database of evidence-informed policies and programs that can improve health.

Learning From Others

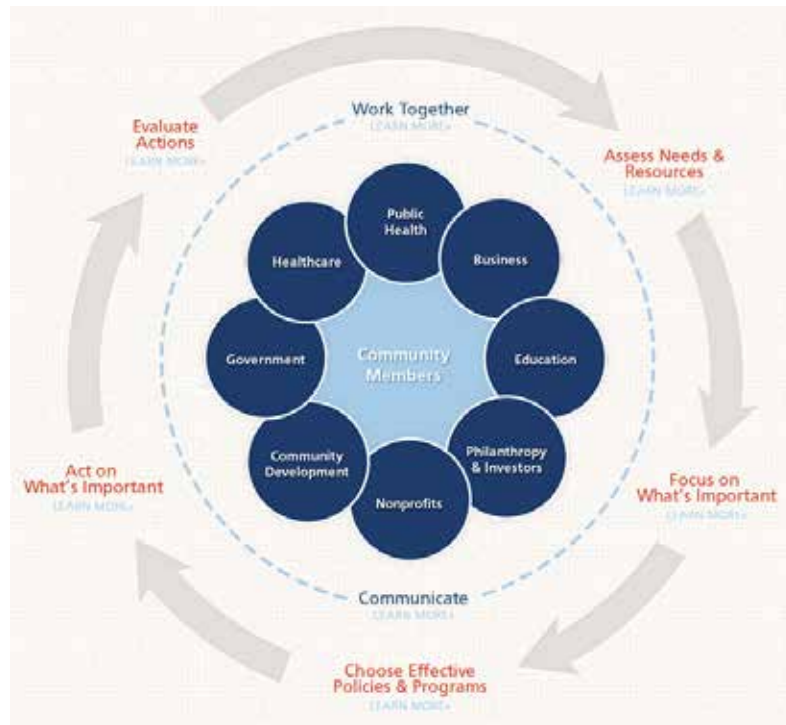
Honoring the efforts of communities working at the forefront of health improvement, the Robert Wood

Johnson Foundation annually awards the *RWJF Culture of Health Prize* to outstanding communities that are working toward better health. The *Prize* recognizes communities with strong and diverse partnerships that are coming together with a shared vision and commitment to address multiple factors that affect health and make lasting changes that create a culture of health for all. Visit countyhealthrankings.org or rwjf.org/prize to learn about the work of past prize winners.

At countyhealthrankings.org, we also feature stories from communities across the nation who have used data from the *County Health Rankings* or have engaged in strategies to improve health. For example, you can learn from the successes and challenges of the 30 *Roadmaps to Health* Community Grantees. These grantees are working to create positive policy or systems changes that address social and economic factors that influence how healthy people are and how long they live, such as education and community safety. You might also want to contact your local affiliate of United Way Worldwide, the National Business Coalition on Health, or the National Association of Counties - their national parent organizations have partnered with us to raise awareness and stimulate action to improve health in their local members' communities.

How can you get involved?

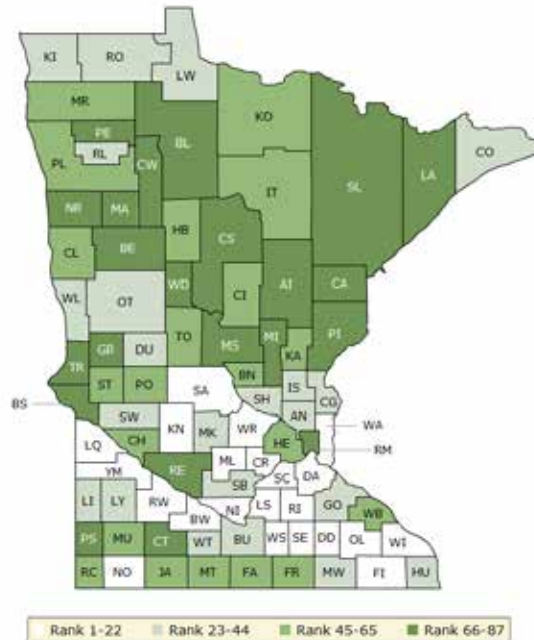
In communities large and small, people from all walks of life are taking ownership and action to improve health. Visit countyhealthrankings.org to get ideas and guidance on how you can take action in your community. Working with others, you can improve the health of your community.



The green map below shows the distribution of Minnesota’s **health outcomes**, based on an equal weighting of length and quality of life.

Lighter colors indicate better performance in the respective summary rankings. Detailed information on the underlying measures is available on our web site.

HEALTH OUTCOMES RANKS

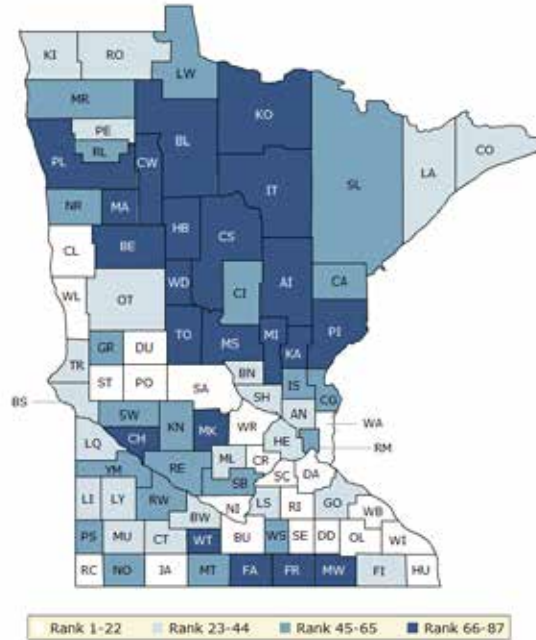


County	Rank	County	Rank	County	Rank	County	Rank
Aitkin	73	Fillmore	12	Martin	50	Rock	64
Anoka	41	Freeborn	61	McLeod	2	Roseau	32
Becker	71	Goodhue	43	Meeker	25	Scott	11
Beltrami	77	Grant	70	Mille Lacs	85	Sherburne	26
Benton	56	Hennepin	54	Morrison	80	Sibley	33
Big Stone	66	Houston	40	Mower	35	St. Louis	75
Blue Earth	30	Hubbard	58	Murray	49	Stearns	19
Brown	22	Isanti	42	Nicollet	9	Steele	4
Carlton	78	Itasca	63	Nobles	5	Stevens	65
Carver	1	Jackson	52	Norman	68	Swift	39
Cass	86	Kanabec	59	Olmsted	17	Todd	53
Chippewa	47	Kandiyohi	16	Otter Tail	37	Traverse	84
Chisago	36	Kittson	34	Pennington	69	Wabasha	45
Clay	51	Koochiching	55	Pine	76	Wadena	83
Clearwater	74	Lac qui Parle	20	Pipestone	79	Waseca	3
Cook	28	Lake	82	Polk	57	Washington	8
Cottonwood	72	Lake of the Woods	27	Pope	60	Watonwan	44
Crow Wing	48	Le Sueur	15	Ramsey	67	Wilkin	24
Dakota	14	Lincoln	29	Red Lake	31	Winona	18
Dodge	10	Lyon	38	Redwood	7	Wright	13
Douglas	23	Mahnomen	87	Renville	81	Yellow Medicine	6
Faribault	46	Marshall	62	Rice	21		

The blue map displays Minnesota’s summary ranks for **health factors**, based on weighted scores for health behaviors, clinical care, social and economic factors, and the physical environment.

Lighter colors indicate better performance in the respective summary rankings. Detailed information on the underlying measures is available on our web site.

HEALTH FACTORS RANKS



County	Rank	County	Rank	County	Rank	County	Rank
Aitkin	80	Fillmore	30	Martin	56	Rock	10
Anoka	40	Freeborn	76	McLeod	38	Roseau	23
Becker	67	Goodhue	24	Meeker	66	Scott	5
Beltrami	85	Grant	63	Mille Lacs	83	Sherburne	35
Benton	44	Hennepin	27	Morrison	75	Sibley	57
Big Stone	42	Houston	9	Mower	70	St. Louis	53
Blue Earth	19	Hubbard	73	Murray	32	Stearns	16
Brown	37	Isanti	54	Nicollet	4	Steele	14
Carlton	50	Itasca	69	Nobles	49	Stevens	18
Carver	3	Jackson	8	Norman	60	Swift	55
Cass	84	Kanabec	81	Olmsted	1	Todd	77
Chippewa	71	Kandiyohi	61	Otter Tail	36	Traverse	34
Chisago	52	Kittson	39	Pennington	26	Wabasha	6
Clay	20	Koochiching	74	Pine	82	Wadena	79
Clearwater	86	Lac qui Parle	25	Pipestone	48	Waseca	46
Cook	41	Lake	33	Polk	72	Washington	2
Cottonwood	43	Lake of the Woods	59	Pope	21	Watonwan	78
Crow Wing	51	Le Sueur	31	Ramsey	58	Wilkin	15
Dakota	7	Lincoln	29	Red Lake	62	Winona	17
Dodge	22	Lyon	28	Redwood	65	Wright	11
Douglas	12	Mahnomen	87	Renville	64	Yellow Medicine	47
Faribault	68	Marshall	45	Rice	13		

Summary Health Outcomes & Health Factors Rankings

Counties receive two ranks:

- Health Outcomes
- Health Factors

Each of these ranks represents a weighted summary of a number of measures.

Health outcomes represent how healthy a county is while health factors represent what influences the health of the county.

Rank	Health Outcomes	Rank	Health Factors
1	Carver	1	Olmsted
2	McLeod	2	Washington
3	Waseca	3	Carver
4	Steele	4	Nicollet
5	Nobles	5	Scott
6	Yellow Medicine	6	Wabasha
7	Redwood	7	Dakota
8	Washington	8	Jackson
9	Nicollet	9	Houston
10	Dodge	10	Rock
11	Scott	11	Wright
12	Fillmore	12	Douglas
13	Wright	13	Rice
14	Dakota	14	Steele
15	Le Sueur	15	Wilkin
16	Kandiyohi	16	Stearns
17	Olmsted	17	Winona
18	Winona	18	Stevens
19	Stearns	19	Blue Earth
20	Lac qui Parle	20	Clay
21	Rice	21	Pope
22	Brown	22	Dodge
23	Douglas	23	Roseau
24	Wilkin	24	Goodhue
25	Meeker	25	Lac qui Parle
26	Sherburne	26	Pennington
27	Lake of the Woods	27	Hennepin
28	Cook	28	Lyon
29	Lincoln	29	Lincoln
30	Blue Earth	30	Fillmore
31	Red Lake	31	Le Sueur
32	Roseau	32	Murray
33	Sibley	33	Lake
34	Kittson	34	Traverse
35	Mower	35	Sherburne
36	Chisago	36	Otter Tail
37	Otter Tail	37	Brown
38	Lyon	38	McLeod
39	Swift	39	Kittson
40	Houston	40	Anoka

Rank	Health Outcomes	Rank	Health Factors
41	Anoka	41	Cook
42	Isanti	42	Big Stone
43	Goodhue	43	Cottonwood
44	Watonwan	44	Benton
45	Wabasha	45	Marshall
46	Faribault	46	Waseca
47	Chippewa	47	Yellow Medicine
48	Crow Wing	48	Pipestone
49	Murray	49	Nobles
50	Martin	50	Carlton
51	Clay	51	Crow Wing
52	Jackson	52	Chisago
53	Todd	53	St. Louis
54	Hennepin	54	Isanti
55	Koochiching	55	Swift
56	Benton	56	Martin
57	Polk	57	Sibley
58	Hubbard	58	Ramsey
59	Kanabec	59	Lake of the Woods
60	Pope	60	Norman
61	Freeborn	61	Kandiyohi
62	Marshall	62	Red Lake
63	Itasca	63	Grant
64	Rock	64	Renville
65	Stevens	65	Redwood
66	Big Stone	66	Meeker
67	Ramsey	67	Becker
68	Norman	68	Faribault
69	Pennington	69	Itasca
70	Grant	70	Mower
71	Becker	71	Chippewa
72	Cottonwood	72	Polk
73	Aitkin	73	Hubbard
74	Clearwater	74	Koochiching
75	St. Louis	75	Morrison
76	Pine	76	Freeborn
77	Beltrami	77	Todd
78	Carlton	78	Watonwan
79	Pipestone	79	Wadena
80	Morrison	80	Aitkin
81	Renville	81	Kanabec
82	Lake	82	Pine
83	Wadena	83	Mille Lacs
84	Traverse	84	Cass
85	Mille Lacs	85	Beltrami
86	Cass	86	Clearwater
87	Mahnomen	87	Mahnomen

2014 County Health Rankings: Measures, Data Sources, and Years of Data

	Measure	Data Source	Years of Data
HEALTH OUTCOMES			
Length of Life	Premature death	National Center for Health Statistics	2008-2010
Quality of Life	Poor or fair health	Behavioral Risk Factor Surveillance System	2006-2012
	Poor physical health days	Behavioral Risk Factor Surveillance System	2006-2012
	Poor mental health days	Behavioral Risk Factor Surveillance System	2006-2012
	Low birthweight	National Center for Health Statistics	2005-2011
HEALTH FACTORS			
HEALTH BEHAVIORS			
Tobacco Use	Adult smoking	Behavioral Risk Factor Surveillance System	2006-2012
Diet and Exercise	Adult obesity	National Center for Chronic Disease Prevention and Health Promotion	2010
	Food environment index	USDA Food Environment Atlas, Map the Meal Gap	2010-2011
	Physical inactivity	National Center for Chronic Disease Prevention and Health Promotion	2010
	Access to exercise opportunities	OneSource Global Business Browser, Delorme map data, ESRI, & US Census Tigerline Files	2010 & 2012
Alcohol and Drug Use	Excessive drinking	Behavioral Risk Factor Surveillance System	2006-2012
	Alcohol-impaired driving deaths	Fatality Analysis Reporting System	2008-2012
Sexual Activity	Sexually transmitted infections	National Center for HIV/AIDS, Viral Hepatitis, STD, and TB prevention	2011
	Teen births	National Center for Health Statistics	2005-2011
CLINICAL CARE			
Access to Care	Uninsured	Small Area Health Insurance Estimates	2011
	Primary care physicians	HRSA Area Resource File	2011
	Dentists	HRSA Area Resource File	2012
	Mental health providers	CMS, National Provider Identification	2013
Quality of Care	Preventable hospital stays	Medicare/Dartmouth Institute	2011
	Diabetic screening	Medicare/Dartmouth Institute	2011
	Mammography screening	Medicare/Dartmouth Institute	2011
SOCIAL AND ECONOMIC FACTORS			
Education	High school graduation	data.gov, supplemented with National Center for Education Statistics	2010-2011
	Some college	American Community Survey	2008-2012
Employment	Unemployment	Bureau of Labor Statistics	2012
Income	Children in poverty	Small Area Income and Poverty Estimates	2012
Family and Social Support	Inadequate social support	Behavioral Risk Factor Surveillance System	2005-2010
	Children in single-parent households	American Community Survey	2008-2012
Community Safety	Violent crime	Uniform Crime Reporting - FBI	2009-2011
	Injury deaths	CDC WONDER	2006-2010
PHYSICAL ENVIRONMENT			
Air and Water Quality	Air pollution - particulate matter ¹	CDC WONDER	2011
	Drinking water violations	Safe Drinking Water Information System	FY 2012-2013
Housing and Transit	Severe housing problems	HUD, Comprehensive Housing Affordability Strategy	2006-2010
	Driving alone to work	American Community Survey	2008-2012
	Long commute – driving alone	American Community Survey	2008-2012

¹ Not available for AK and HI.

CREDITS

Report Authors

University of Wisconsin-Madison
School of Medicine and Public Health
Department of Population Health Sciences
Population Health Institute

Bridget Catlin, PhD, MHSA
Amanda Jovaag, MS
Julie Willems Van Dijk, PhD, RN
Patrick Remington, MD, MPH

This publication would not have been possible without the following contributions:

Data

Centers for Disease Control and Prevention: National Center for Health Statistics and Division of Behavioral Surveillance
Dartmouth Institute for Health Policy & Clinical Practice

Research Assistance

Jennifer Buechner
Hyojun Park, MA
Elizabeth Pollock
Jennifer Robinson
Matthew Rodock, MPH
Anne Roubal, MS

Communications and Outreach

Burness Communications
Alison Bergum, MPA
Matthew Call
Kate Konkle, MPH
Kitty Jerome, MA
Karen Odegaard, MPH
Jan O'Neill, MPA

Design

Forum One, Alexandria, VA

Robert Wood Johnson Foundation

Abbey Cofsky, MPH – Senior Program Officer
Michelle Larkin, JD, MS, RN – Assistant Vice-President, Program Portfolios
Marjorie Paloma, MPH – Senior Policy Advisor
James S. Marks, MD, MPH – Senior Vice-President and Director, Program Portfolios
Joe Marx – Senior Communications Officer

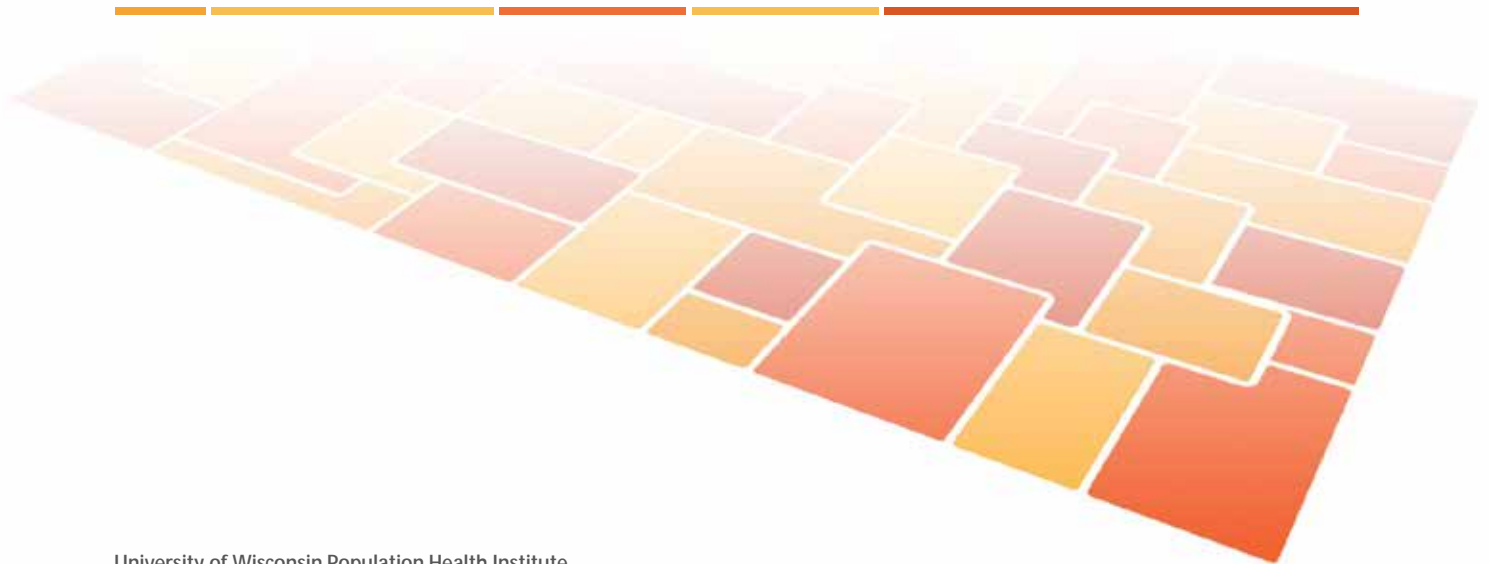
Suggested citation: University of Wisconsin Population Health Institute. *County Health Rankings 2014*.

INSIDE BACK COVER – INTENTIONALLY BLANK

County Health Rankings & Roadmaps

Building a Culture of Health, County by County

countyhealthrankings.org



University of Wisconsin Population Health Institute
610 Walnut St, #524, Madison, WI 53726
(608) 265-8240 / info@countyhealthrankings.org

