

**County Health
Rankings & Roadmaps**

Building a Culture of Health, County by County

A Robert Wood Johnson Foundation program

2014 *Rankings* Kentucky



A collaboration between the Robert Wood Johnson Foundation and the University of Wisconsin Population Health Institute.



Support provided by

Robert Wood Johnson Foundation



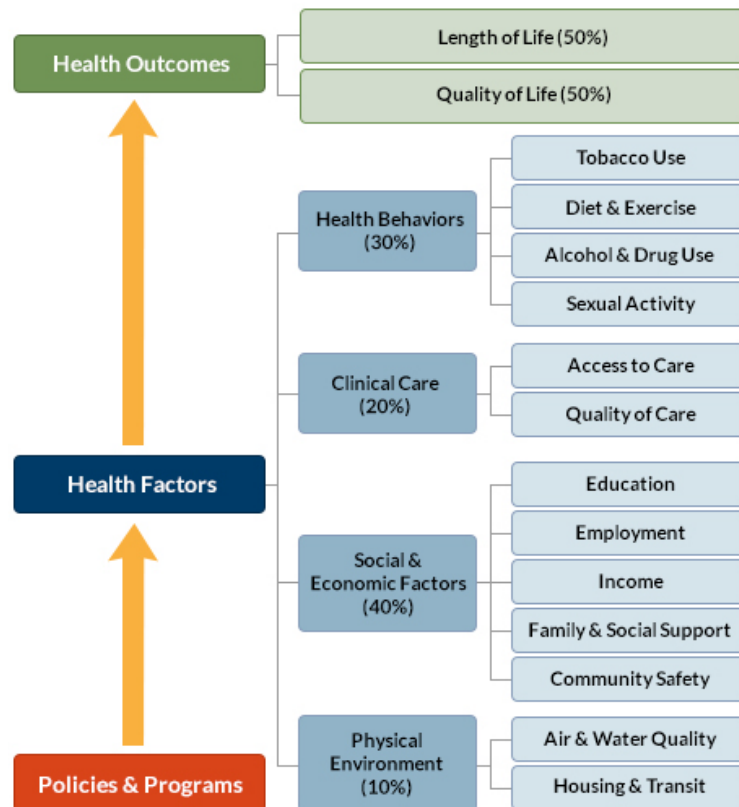
INSIDE FRONT COVER – INTENTIONALLY BLANK

INTRODUCTION

The *County Health Rankings & Roadmaps* program helps communities identify and implement solutions that make it easier for people to be healthy in their schools, workplaces, and neighborhoods. Ranking the health of nearly every county in the nation, the *County Health Rankings* illustrate *what we know* when it comes to what is making people sick or healthy. The *Roadmaps* show *what we can do* to create healthier places to live, learn, work, and play. The Robert Wood Johnson Foundation (RWJF) collaborates with the University of Wisconsin Population Health Institute (UWPHI) to bring this program to cities, counties, and states across the nation.

WHAT ARE THE COUNTY HEALTH RANKINGS?

The *County Health Rankings* measure the health of nearly every county in the nation. Published online at countyhealthrankings.org, the *Rankings* help counties understand what influences how healthy residents are and how long they will live. The *Rankings* look at a variety of measures that affect health, such as high school graduation rates, access to healthy foods, rates of smoking, obesity, and teen births. Based on data available for each county, the *Rankings* are unique in their ability to measure the overall health of each county in all 50 states. They have been used to garner support for local health improvement initiatives among government agencies, healthcare providers, community organizations, business leaders, policy makers, and the public.



HOW ARE PEOPLE USING THE RANKINGS?

- Ø Highlighting community success
- Ø Identifying root causes of poor health
- Ø Supporting policy change
- Ø Engaging communities in health improvement

For more information, visit countyhealthrankings.org

WHAT ARE THE ROADMAPS TO HEALTH?

The *Roadmaps to Health* help communities bring people together to look at the many factors that influence health, select strategies that work, and make changes that will have a lasting impact. The *Roadmaps* focus on helping communities determine what they can do and what they can learn from others.

What You Can Do

The *Roadmaps to Health* Action Center provides step-by-step guides, tools, and webinars to help groups working to improve the health of their communities. Community Coaches also provide customized consultation to local communities that have demonstrated a willingness to address factors that we know influence health, such as education, income, and community safety.

The Action Center also features *What Works for Health* – a searchable database of evidence-informed policies and programs that can improve health.

Learning From Others

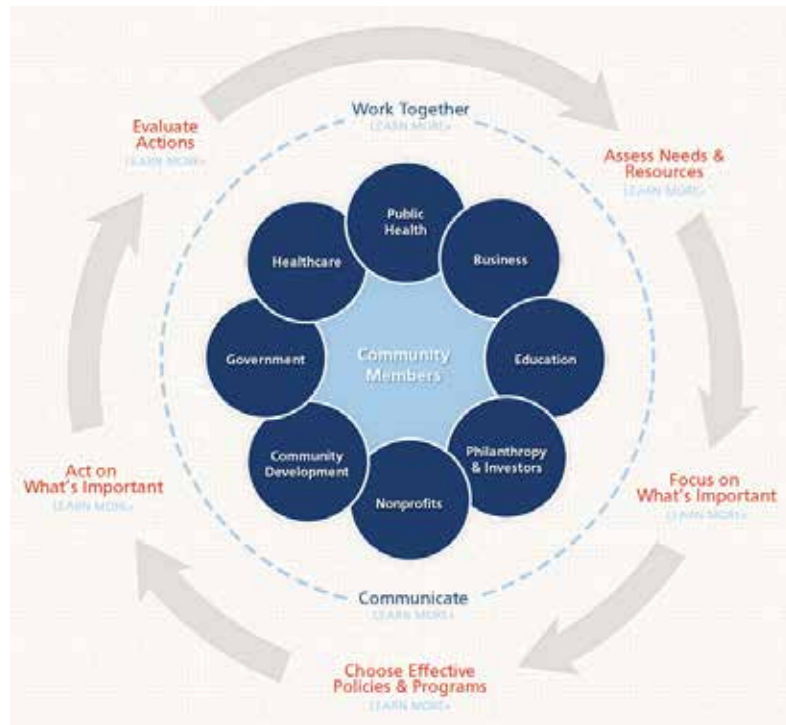
Honoring the efforts of communities working at the forefront of health improvement, the Robert Wood

Johnson Foundation annually awards the *RWJF Culture of Health Prize* to outstanding communities that are working toward better health. The *Prize* recognizes communities with strong and diverse partnerships that are coming together with a shared vision and commitment to address multiple factors that affect health and make lasting changes that create a culture of health for all. Visit countyhealthrankings.org or rwjf.org/prize to learn about the work of past prize winners.

At countyhealthrankings.org, we also feature stories from communities across the nation who have used data from the *County Health Rankings* or have engaged in strategies to improve health. For example, you can learn from the successes and challenges of the 30 *Roadmaps to Health* Community Grantees. These grantees are working to create positive policy or systems changes that address social and economic factors that influence how healthy people are and how long they live, such as education and community safety. You might also want to contact your local affiliate of United Way Worldwide, the National Business Coalition on Health, or the National Association of Counties - their national parent organizations have partnered with us to raise awareness and stimulate action to improve health in their local members' communities.

How can you get involved?

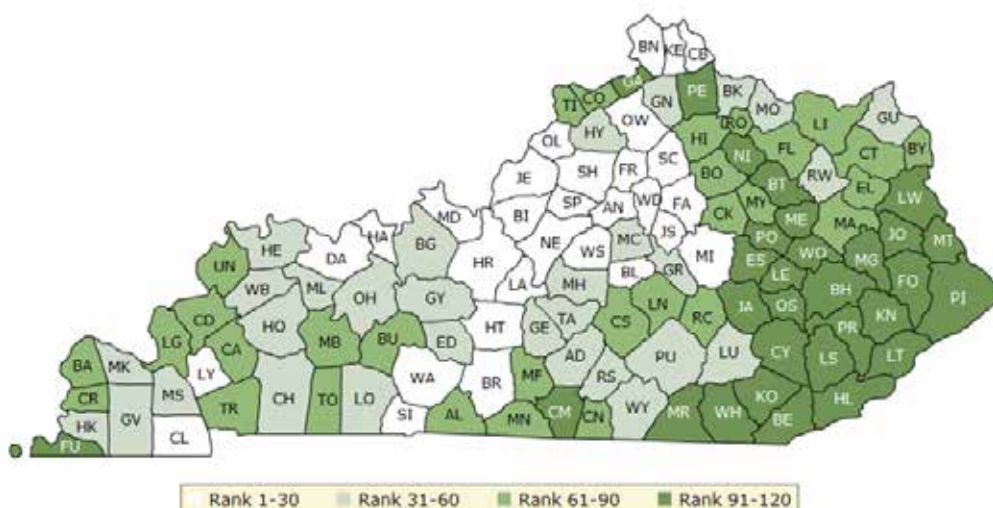
In communities large and small, people from all walks of life are taking ownership and action to improve health. Visit countyhealthrankings.org to get ideas and guidance on how you can take action in your community. Working with others, you can improve the health of your community.



The green map below shows the distribution of Kentucky's **health outcomes**, based on an equal weighting of length and quality of life.

Lighter colors indicate better performance in the respective summary rankings. Detailed information on the underlying measures is available on our web site.

HEALTH OUTCOMES RANKS

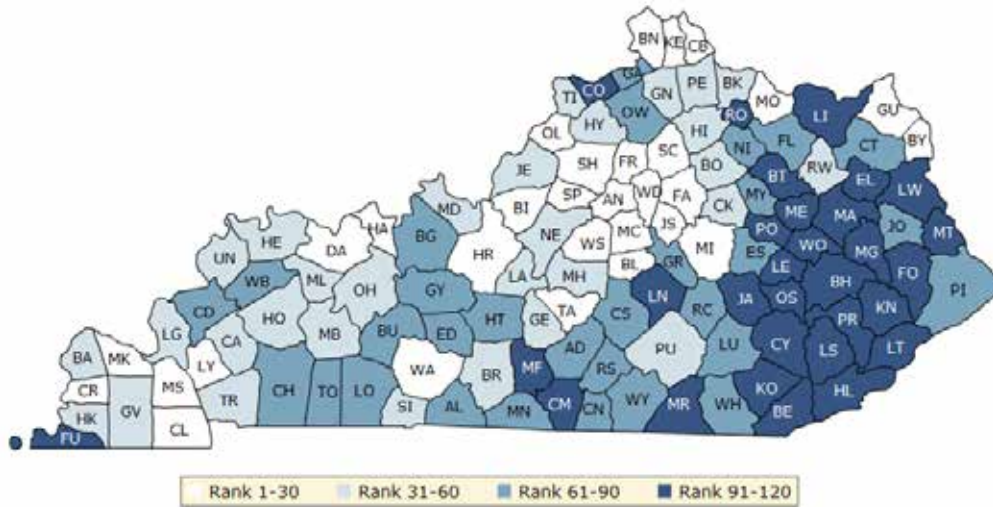


County	Rank	County	Rank	County	Rank	County	Rank
Adair	48	Edmonson	40	Knox	101	Nicholas	97
Allen	69	Elliott	66	Larue	13	Ohio	36
Anderson	16	Estill	98	Laurel	57	Oldham	1
Ballard	89	Fayette	7	Lawrence	102	Owen	20
Barren	29	Fleming	79	Lee	116	Owsley	113
Bath	99	Floyd	119	Leslie	108	Pendleton	92
Bell	106	Franklin	30	Letcher	96	Perry	120
Boone	2	Fulton	93	Lewis	82	Pike	114
Bourbon	67	Gallatin	95	Lincoln	87	Powell	103
Boyd	80	Garrard	51	Livingston	68	Pulaski	54
Boyle	21	Grant	58	Logan	39	Robertson	86
Bracken	55	Graves	35	Lyon	12	Rockcastle	85
Breathitt	117	Grayson	47	Madison	18	Rowan	50
Breckinridge	59	Green	32	Magoffin	104	Russell	38
Bullitt	25	Greenup	53	Marion	43	Scott	5
Butler	81	Hancock	8	Marshall	33	Shelby	3
Caldwell	76	Hardin	14	Martin	115	Simpson	27
Calloway	4	Harlan	111	Mason	31	Spencer	11
Campbell	22	Harrison	77	McCracken	37	Taylor	42
Carlisle	73	Hart	26	McCreary	91	Todd	70
Carroll	83	Henderson	52	McLean	45	Trigg	61
Carter	90	Henry	41	Meade	24	Trimble	63
Casey	78	Hickman	56	Menifee	112	Union	74
Christian	49	Hopkins	60	Mercer	34	Warren	15
Clark	75	Jackson	105	Metcalfe	88	Washington	6
Clay	110	Jefferson	28	Monroe	64	Wayne	46
Clinton	84	Jessamine	10	Montgomery	72	Webster	44
Crittenden	65	Johnson	109	Morgan	62	Whitley	94
Cumberland	107	Kenton	19	Muhlenberg	71	Wolfe	118
Daviess	23	Knott	100	Nelson	17	Woodford	9

The blue map displays Kentucky's summary ranks for **health factors**, based on weighted scores for health behaviors, clinical care, social and economic factors, and the physical environment.

Lighter colors indicate better performance in the respective summary rankings. Detailed information on the underlying measures is available on our web site.

HEALTH FACTORS RANKS



County	Rank	County	Rank	County	Rank	County	Rank
Adair	87	Edmonson	80	Knox	107	Nicholas	73
Allen	69	Elliott	100	Larue	34	Ohio	57
Anderson	6	Estill	90	Laurel	72	Oldham	1
Ballard	35	Fayette	4	Lawrence	93	Owen	67
Barren	32	Fleming	74	Lee	111	Owsley	115
Bath	96	Floyd	104	Leslie	116	Pendleton	53
Bell	108	Franklin	30	Letcher	92	Perry	99
Boone	3	Fulton	109	Lewis	97	Pike	68
Bourbon	44	Gallatin	84	Lincoln	95	Powell	102
Boyd	22	Garrard	65	Livingston	45	Pulaski	48
Boyle	14	Grant	60	Logan	70	Robertson	91
Bracken	40	Graves	42	Lyon	16	Rockcastle	78
Breathitt	112	Grayson	77	Madison	7	Rowan	31
Breckinridge	61	Green	52	Magoffin	117	Russell	79
Bullitt	24	Greenup	27	Marion	36	Scott	5
Butler	71	Hancock	13	Marshall	25	Shelby	8
Caldwell	55	Hardin	10	Martin	119	Simpson	58
Calloway	11	Harlan	113	Mason	29	Spencer	15
Campbell	9	Harrison	50	McCracken	20	Taylor	28
Carlisle	21	Hart	62	McCreary	110	Todd	82
Carroll	103	Henderson	38	McLean	51	Trigg	54
Carter	81	Henry	56	Meade	49	Trimble	47
Casey	85	Hickman	39	Menifee	98	Union	43
Christian	66	Hopkins	33	Mercer	26	Warren	18
Clark	41	Jackson	114	Metcalfe	94	Washington	17
Clay	120	Jefferson	37	Monroe	86	Wayne	88
Clinton	89	Jessamine	23	Montgomery	63	Webster	64
Crittenden	83	Johnson	76	Morgan	105	Whitley	75
Cumberland	101	Kenton	19	Muhlenberg	59	Wolfe	118
Daviess	12	Knott	106	Nelson	46	Woodford	2

Summary Health Outcomes & Health Factors Rankings

Counties receive two ranks:

- Health Outcomes
- Health Factors

Each of these ranks represents a weighted summary of a number of measures.

Health outcomes represent how healthy a county is while health factors represent what influences the health of the county.

Rank	Health Outcomes	Rank	Health Factors
1	Oldham	1	Oldham
2	Boone	2	Woodford
3	Shelby	3	Boone
4	Calloway	4	Fayette
5	Scott	5	Scott
6	Washington	6	Anderson
7	Fayette	7	Madison
8	Hancock	8	Shelby
9	Woodford	9	Campbell
10	Jessamine	10	Hardin
11	Spencer	11	Calloway
12	Lyon	12	Daviess
13	Larue	13	Hancock
14	Hardin	14	Boyle
15	Warren	15	Spencer
16	Anderson	16	Lyon
17	Nelson	17	Washington
18	Madison	18	Warren
19	Kenton	19	Kenton
20	Owen	20	McCracken
21	Boyle	21	Carlisle
22	Campbell	22	Boyd
23	Daviess	23	Jessamine
24	Meade	24	Bullitt
25	Bullitt	25	Marshall
26	Hart	26	Mercer
27	Simpson	27	Greenup
28	Jefferson	28	Taylor
29	Barren	29	Mason
30	Franklin	30	Franklin
31	Mason	31	Rowan
32	Green	32	Barren
33	Marshall	33	Hopkins
34	Mercer	34	Larue
35	Graves	35	Ballard
36	Ohio	36	Marion
37	McCracken	37	Jefferson
38	Russell	38	Henderson
39	Logan	39	Hickman
40	Edmonson	40	Bracken

Rank	Health Outcomes	Rank	Health Factors
41	Henry	41	Clark
42	Taylor	42	Graves
43	Marion	43	Union
44	Webster	44	Bourbon
45	McLean	45	Livingston
46	Wayne	46	Nelson
47	Grayson	47	Trimble
48	Adair	48	Pulaski
49	Christian	49	Meade
50	Rowan	50	Harrison
51	Garrard	51	McLean
52	Henderson	52	Green
53	Greenup	53	Pendleton
54	Pulaski	54	Trigg
55	Bracken	55	Caldwell
56	Hickman	56	Henry
57	Laurel	57	Ohio
58	Grant	58	Simpson
59	Breckinridge	59	Muhlenberg
60	Hopkins	60	Grant
61	Trigg	61	Breckinridge
62	Morgan	62	Hart
63	Trimble	63	Montgomery
64	Monroe	64	Webster
65	Crittenden	65	Garrard
66	Elliott	66	Christian
67	Bourbon	67	Owen
68	Livingston	68	Pike
69	Allen	69	Allen
70	Todd	70	Logan
71	Muhlenberg	71	Butler
72	Montgomery	72	Laurel
73	Carlisle	73	Nicholas
74	Union	74	Fleming
75	Clark	75	Whitley
76	Caldwell	76	Johnson
77	Harrison	77	Grayson
78	Casey	78	Rockcastle
79	Fleming	79	Russell
80	Boyd	80	Edmonson
81	Butler	81	Carter
82	Lewis	82	Todd
83	Carroll	83	Crittenden
84	Clinton	84	Gallatin
85	Rockcastle	85	Casey
86	Robertson	86	Monroe
87	Lincoln	87	Adair
88	Metcalfe	88	Wayne

Rank	Health Outcomes	Rank	Health Factors
89	Ballard	89	Clinton
90	Carter	90	Estill
91	McCreary	91	Robertson
92	Pendleton	92	Letcher
93	Fulton	93	Lawrence
94	Whitley	94	Metcalfe
95	Gallatin	95	Lincoln
96	Letcher	96	Bath
97	Nicholas	97	Lewis
98	Estill	98	Menifee
99	Bath	99	Perry
100	Knott	100	Elliott
101	Knox	101	Cumberland
102	Lawrence	102	Powell
103	Powell	103	Carroll
104	Magoffin	104	Floyd
105	Jackson	105	Morgan
106	Bell	106	Knott
107	Cumberland	107	Knox
108	Leslie	108	Bell
109	Johnson	109	Fulton
110	Clay	110	McCreary
111	Harlan	111	Lee
112	Menifee	112	Breathitt
113	Owsley	113	Harlan
114	Pike	114	Jackson
115	Martin	115	Owsley
116	Lee	116	Leslie
117	Breathitt	117	Magoffin
118	Wolfe	118	Wolfe
119	Floyd	119	Martin
120	Perry	120	Clay

2014 County Health Rankings: Measures, Data Sources, and Years of Data

	Measure	Data Source	Years of Data
HEALTH OUTCOMES			
Length of Life	Premature death	National Center for Health Statistics	2008-2010
Quality of Life	Poor or fair health	Behavioral Risk Factor Surveillance System	2006-2012
	Poor physical health days	Behavioral Risk Factor Surveillance System	2006-2012
	Poor mental health days	Behavioral Risk Factor Surveillance System	2006-2012
	Low birthweight	National Center for Health Statistics	2005-2011
HEALTH FACTORS			
HEALTH BEHAVIORS			
Tobacco Use	Adult smoking	Behavioral Risk Factor Surveillance System	2006-2012
Diet and Exercise	Adult obesity	National Center for Chronic Disease Prevention and Health Promotion	2010
	Food environment index	USDA Food Environment Atlas, Map the Meal Gap	2010-2011
	Physical inactivity	National Center for Chronic Disease Prevention and Health Promotion	2010
	Access to exercise opportunities	OneSource Global Business Browser, Delorme map data, ESRI, & US Census Tigerline Files	2010 & 2012
Alcohol and Drug Use	Excessive drinking	Behavioral Risk Factor Surveillance System	2006-2012
	Alcohol-impaired driving deaths	Fatality Analysis Reporting System	2008-2012
Sexual Activity	Sexually transmitted infections	National Center for HIV/AIDS, Viral Hepatitis, STD, and TB prevention	2011
	Teen births	National Center for Health Statistics	2005-2011
CLINICAL CARE			
Access to Care	Uninsured	Small Area Health Insurance Estimates	2011
	Primary care physicians	HRSA Area Resource File	2011
	Dentists	HRSA Area Resource File	2012
	Mental health providers	CMS, National Provider Identification	2013
Quality of Care	Preventable hospital stays	Medicare/Dartmouth Institute	2011
	Diabetic screening	Medicare/Dartmouth Institute	2011
	Mammography screening	Medicare/Dartmouth Institute	2011
SOCIAL AND ECONOMIC FACTORS			
Education	High school graduation	data.gov, supplemented with National Center for Education Statistics	2010-2011
	Some college	American Community Survey	2008-2012
Employment	Unemployment	Bureau of Labor Statistics	2012
Income	Children in poverty	Small Area Income and Poverty Estimates	2012
Family and Social Support	Inadequate social support	Behavioral Risk Factor Surveillance System	2005-2010
	Children in single-parent households	American Community Survey	2008-2012
Community Safety	Violent crime	Uniform Crime Reporting - FBI	2009-2011
	Injury deaths	CDC WONDER	2006-2010
PHYSICAL ENVIRONMENT			
Air and Water Quality	Air pollution - particulate matter ¹	CDC WONDER	2011
	Drinking water violations	Safe Drinking Water Information System	FY 2012-2013
Housing and Transit	Severe housing problems	HUD, Comprehensive Housing Affordability Strategy	2006-2010
	Driving alone to work	American Community Survey	2008-2012
	Long commute – driving alone	American Community Survey	2008-2012

¹ Not available for AK and HI.

CREDITS

Report Authors

University of Wisconsin-Madison
School of Medicine and Public Health
Department of Population Health Sciences
Population Health Institute

Bridget Catlin, PhD, MHSA
Amanda Jovaag, MS
Julie Willems Van Dijk, PhD, RN
Patrick Remington, MD, MPH

This publication would not have been possible without the following contributions:

Data

Centers for Disease Control and Prevention: National Center for Health Statistics and Division of Behavioral Surveillance
Dartmouth Institute for Health Policy & Clinical Practice

Research Assistance

Jennifer Buechner
Hyojun Park, MA
Elizabeth Pollock
Jennifer Robinson
Matthew Rodock, MPH
Anne Roubal, MS

Communications and Outreach

Burness Communications
Alison Bergum, MPA
Matthew Call
Kate Konkle, MPH
Kitty Jerome, MA
Karen Odegaard, MPH
Jan O'Neill, MPA

Design

Forum One, Alexandria, VA

Robert Wood Johnson Foundation

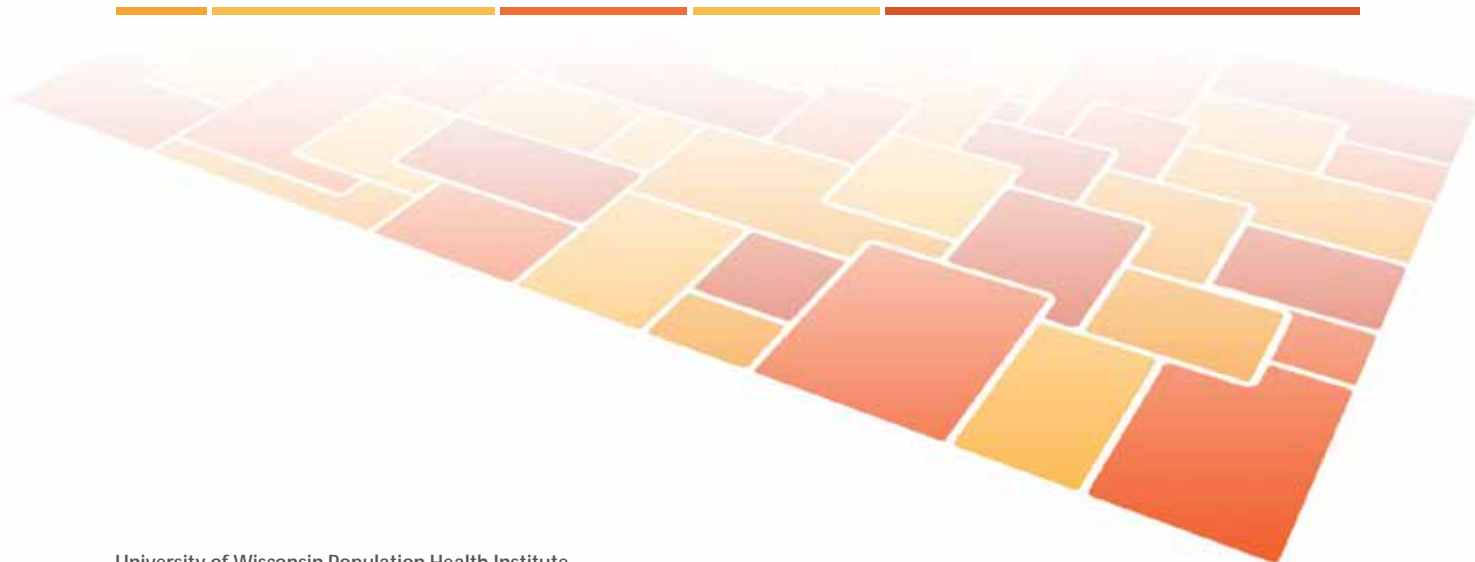
Abbey Cofsky, MPH – Senior Program Officer
Michelle Larkin, JD, MS, RN – Assistant Vice-President, Program Portfolios
Marjorie Paloma, MPH – Senior Policy Advisor
James S. Marks, MD, MPH – Senior Vice-President and Director, Program Portfolios
Joe Marx – Senior Communications Officer

Suggested citation: University of Wisconsin Population Health Institute. *County Health Rankings 2014*.

County Health Rankings & Roadmaps

Building a Culture of Health, County by County

countyhealthrankings.org



University of Wisconsin Population Health Institute
610 Walnut St, #524, Madison, WI 53726
(608) 265-8240 / info@countyhealthrankings.org

