

County Health Rankings & Roadmaps

Building a Culture of Health, County by County

A Robert Wood Johnson Foundation program

2014 *Rankings* **Indiana**



A collaboration between the Robert Wood Johnson Foundation and the University of Wisconsin Population Health Institute.



Support provided by

Robert Wood Johnson
Foundation



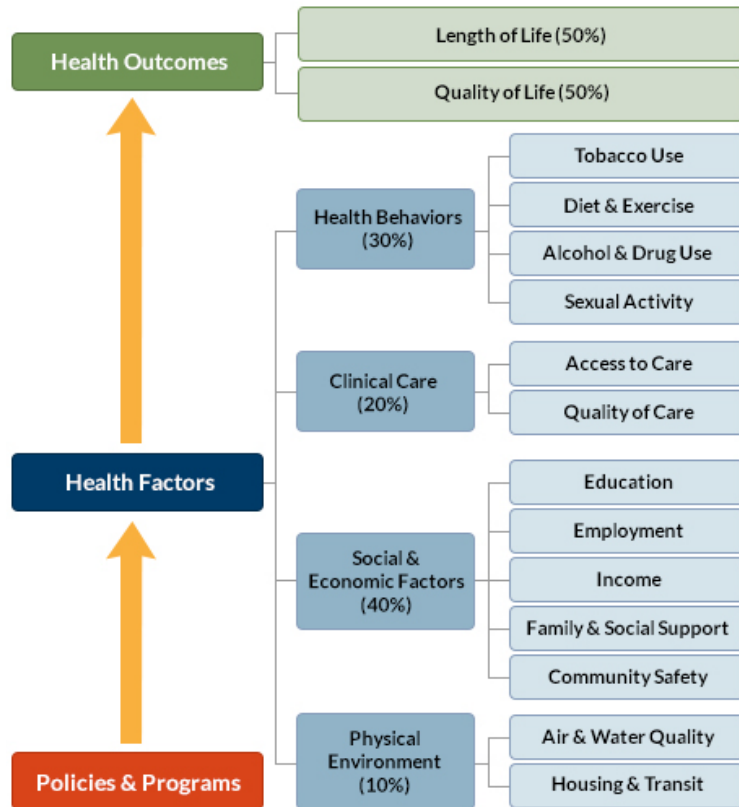
INSIDE FRONT COVER – INTENTIONALLY BLANK

INTRODUCTION

The *County Health Rankings & Roadmaps* program helps communities identify and implement solutions that make it easier for people to be healthy in their schools, workplaces, and neighborhoods. Ranking the health of nearly every county in the nation, the *County Health Rankings* illustrate *what we know* when it comes to what is making people sick or healthy. The *Roadmaps* show *what we can do* to create healthier places to live, learn, work, and play. The Robert Wood Johnson Foundation (RWJF) collaborates with the University of Wisconsin Population Health Institute (UWPHI) to bring this program to cities, counties, and states across the nation.

WHAT ARE THE COUNTY HEALTH RANKINGS?

The *County Health Rankings* measure the health of nearly every county in the nation. Published online at countyhealthrankings.org, the *Rankings* help counties understand what influences how healthy residents are and how long they will live. The *Rankings* look at a variety of measures that affect health, such as high school graduation rates, access to healthy foods, rates of smoking, obesity, and teen births. Based on data available for each county, the *Rankings* are unique in their ability to measure the overall health of each county in all 50 states. They have been used to garner support for local health improvement initiatives among government agencies, healthcare providers, community organizations, business leaders, policy makers, and the public.



HOW ARE PEOPLE USING THE RANKINGS?

- Ø Highlighting community success
- Ø Identifying root causes of poor health
- Ø Supporting policy change
- Ø Engaging communities in health improvement

For more information, visit countyhealthrankings.org

WHAT ARE THE ROADMAPS TO HEALTH?

The *Roadmaps to Health* help communities bring people together to look at the many factors that influence health, select strategies that work, and make changes that will have a lasting impact. The *Roadmaps* focus on helping communities determine what they can do and what they can learn from others.

What You Can Do

The *Roadmaps to Health* Action Center provides step-by-step guides, tools, and webinars to help groups working to improve the health of their communities. Community Coaches also provide customized consultation to local communities that have demonstrated a willingness to address factors that we know influence health, such as education, income, and community safety.

The Action Center also features *What Works for Health* – a searchable database of evidence-informed policies and programs that can improve health.

Learning From Others

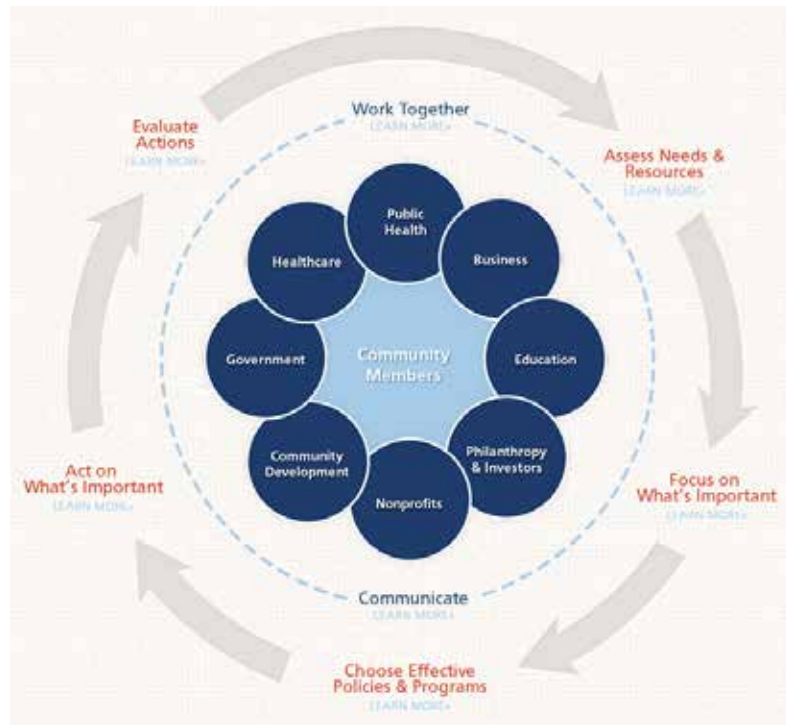
Honoring the efforts of communities working at the forefront of health improvement, the Robert Wood

Johnson Foundation annually awards the *RWJF Culture of Health Prize* to outstanding communities that are working toward better health. The *Prize* recognizes communities with strong and diverse partnerships that are coming together with a shared vision and commitment to address multiple factors that affect health and make lasting changes that create a culture of health for all. Visit countyhealthrankings.org or rwjf.org/prize to learn about the work of past prize winners.

At countyhealthrankings.org, we also feature stories from communities across the nation who have used data from the *County Health Rankings* or have engaged in strategies to improve health. For example, you can learn from the successes and challenges of the 30 *Roadmaps to Health* Community Grantees. These grantees are working to create positive policy or systems changes that address social and economic factors that influence how healthy people are and how long they live, such as education and community safety. You might also want to contact your local affiliate of United Way Worldwide, the National Business Coalition on Health, or the National Association of Counties - their national parent organizations have partnered with us to raise awareness and stimulate action to improve health in their local members' communities.

How can you get involved?

In communities large and small, people from all walks of life are taking ownership and action to improve health. Visit countyhealthrankings.org to get ideas and guidance on how you can take action in your community. Working with others, you can improve the health of your community.



The green map below shows the distribution of Indiana’s **health outcomes**, based on an equal weighting of length and quality of life.

Lighter colors indicate better performance in the respective summary rankings. Detailed information on the underlying measures is available on our web site.

HEALTH OUTCOMES RANKS

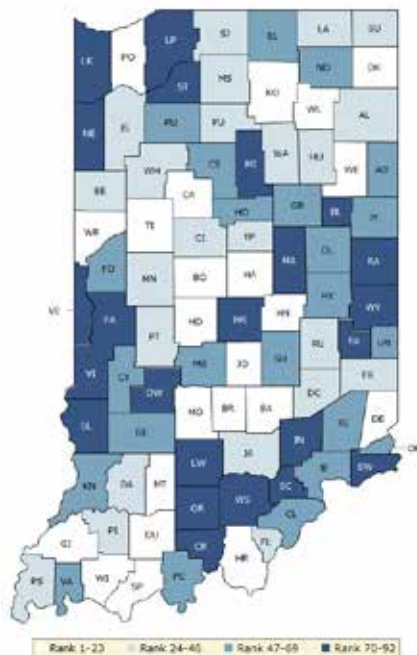


County	Rank	County	Rank	County	Rank	County	Rank
Adams	13	Franklin	23	Lawrence	84	Rush	69
Allen	37	Fulton	53	Madison	79	Scott	92
Bartholomew	34	Gibson	35	Marion	78	Shelby	57
Benton	47	Grant	81	Marshall	16	Spencer	17
Blackford	90	Greene	74	Martin	71	St. Joseph	44
Boone	3	Hamilton	1	Miami	52	Starke	88
Brown	5	Hancock	25	Monroe	8	Steuben	22
Carroll	30	Harrison	32	Montgomery	41	Sullivan	85
Cass	54	Hendricks	2	Morgan	40	Switzerland	70
Clark	59	Henry	76	Newton	49	Tippecanoe	10
Clay	27	Howard	68	Noble	33	Tipton	46
Clinton	31	Huntington	26	Ohio	43	Union	38
Crawford	89	Jackson	60	Orange	86	Vanderburgh	73
Daviess	50	Jasper	48	Owen	51	Vermillion	80
Dearborn	28	Jay	58	Parke	39	Vigo	66
Decatur	42	Jefferson	56	Perry	63	Wabash	61
DeKalb	21	Jennings	87	Pike	67	Warren	19
Delaware	83	Johnson	15	Porter	14	Warrick	20
Dubois	6	Knox	82	Posey	11	Washington	75
Elkhart	18	Kosciusko	24	Pulaski	65	Wayne	64
Fayette	91	LaGrange	4	Putnam	12	Wells	7
Floyd	62	Lake	77	Randolph	55	White	36
Fountain	45	LaPorte	72	Ripley	29	Whitley	9

The blue map displays Indiana’s summary ranks for **health factors**, based on weighted scores for health behaviors, clinical care, social and economic factors, and the physical environment.

Lighter colors indicate better performance in the respective summary rankings. Detailed information on the underlying measures is available on our web site.

HEALTH FACTORS RANKS



County	Rank	County	Rank	County	Rank	County	Rank
Adams	48	Franklin	33	Lawrence	70	Rush	29
Allen	37	Fulton	35	Madison	79	Scott	91
Bartholomew	15	Gibson	19	Marion	86	Shelby	50
Benton	36	Grant	69	Marshall	24	Spencer	10
Blackford	84	Greene	61	Martin	20	St. Joseph	45
Boone	2	Hamilton	1	Miami	77	Starke	92
Brown	18	Hancock	5	Monroe	7	Steuben	32
Carroll	17	Harrison	16	Montgomery	42	Sullivan	81
Cass	64	Hendricks	3	Morgan	49	Switzerland	78
Clark	54	Henry	60	Newton	90	Tippecanoe	14
Clay	67	Howard	58	Noble	68	Tipton	25
Clinton	41	Huntington	40	Ohio	52	Union	65
Crawford	89	Jackson	31	Orange	71	Vanderburgh	51
Daviess	43	Jasper	46	Owen	88	Vermillion	76
Dearborn	23	Jay	62	Parke	82	Vigo	72
Decatur	38	Jefferson	63	Perry	56	Wabash	27
DeKalb	21	Jennings	80	Pike	28	Warren	11
Delaware	59	Johnson	8	Porter	12	Warrick	4
Dubois	6	Knox	66	Posey	26	Washington	83
Elkhart	53	Kosciusko	22	Pulaski	47	Wayne	73
Fayette	85	LaGrange	34	Putnam	39	Wells	9
Floyd	30	Lake	87	Randolph	74	White	44
Fountain	55	LaPorte	75	Ripley	57	Whitley	13

Summary Health Outcomes & Health Factors Rankings

Counties receive two ranks:

- Health Outcomes
- Health Factors

Each of these ranks represents a weighted summary of a number of measures.

Health outcomes represent how healthy a county is while health factors represent what influences the health of the county.

Rank	Health Outcomes	Rank	Health Factors
1	Hamilton	1	Hamilton
2	Hendricks	2	Boone
3	Boone	3	Hendricks
4	LaGrange	4	Warrick
5	Brown	5	Hancock
6	Dubois	6	Dubois
7	Wells	7	Monroe
8	Monroe	8	Johnson
9	Whitley	9	Wells
10	Tippecanoe	10	Spencer
11	Posey	11	Warren
12	Putnam	12	Porter
13	Adams	13	Whitley
14	Porter	14	Tippecanoe
15	Johnson	15	Bartholomew
16	Marshall	16	Harrison
17	Spencer	17	Carroll
18	Elkhart	18	Brown
19	Warren	19	Gibson
20	Warrick	20	Martin
21	DeKalb	21	DeKalb
22	Steuben	22	Kosciusko
23	Franklin	23	Dearborn
24	Kosciusko	24	Marshall
25	Hancock	25	Tipton
26	Huntington	26	Posey
27	Clay	27	Wabash
28	Dearborn	28	Pike
29	Ripley	29	Rush
30	Carroll	30	Floyd
31	Clinton	31	Jackson
32	Harrison	32	Steuben
33	Noble	33	Franklin
34	Bartholomew	34	LaGrange
35	Gibson	35	Fulton
36	White	36	Benton
37	Allen	37	Allen
38	Union	38	Decatur
39	Parke	39	Putnam
40	Morgan	40	Huntington
41	Montgomery	41	Clinton
42	Decatur	42	Montgomery
43	Ohio	43	Daviess

Rank	Health Outcomes	Rank	Health Factors
44	St. Joseph	44	White
45	Fountain	45	St. Joseph
46	Tipton	46	Jasper
47	Benton	47	Pulaski
48	Jasper	48	Adams
49	Newton	49	Morgan
50	Daviess	50	Shelby
51	Owen	51	Vanderburgh
52	Miami	52	Ohio
53	Fulton	53	Elkhart
54	Cass	54	Clark
55	Randolph	55	Fountain
56	Jefferson	56	Perry
57	Shelby	57	Ripley
58	Jay	58	Howard
59	Clark	59	Delaware
60	Jackson	60	Henry
61	Wabash	61	Greene
62	Floyd	62	Jay
63	Perry	63	Jefferson
64	Wayne	64	Cass
65	Pulaski	65	Union
66	Vigo	66	Knox
67	Pike	67	Clay
68	Howard	68	Noble
69	Rush	69	Grant
70	Switzerland	70	Lawrence
71	Martin	71	Orange
72	LaPorte	72	Vigo
73	Vanderburgh	73	Wayne
74	Greene	74	Randolph
75	Washington	75	LaPorte
76	Henry	76	Vermillion
77	Lake	77	Miami
78	Marion	78	Switzerland
79	Madison	79	Madison
80	Vermillion	80	Jennings
81	Grant	81	Sullivan
82	Knox	82	Parke
83	Delaware	83	Washington
84	Lawrence	84	Blackford
85	Sullivan	85	Fayette
86	Orange	86	Marion
87	Jennings	87	Lake
88	Starke	88	Owen
89	Crawford	89	Crawford
90	Blackford	90	Newton
91	Fayette	91	Scott
92	Scott	92	Starke

2014 County Health Rankings: Measures, Data Sources, and Years of Data

	Measure	Data Source	Years of Data
HEALTH OUTCOMES			
Length of Life	Premature death	National Center for Health Statistics	2008-2010
Quality of Life	Poor or fair health	Behavioral Risk Factor Surveillance System	2006-2012
	Poor physical health days	Behavioral Risk Factor Surveillance System	2006-2012
	Poor mental health days	Behavioral Risk Factor Surveillance System	2006-2012
	Low birthweight	National Center for Health Statistics	2005-2011
HEALTH FACTORS			
HEALTH BEHAVIORS			
Tobacco Use	Adult smoking	Behavioral Risk Factor Surveillance System	2006-2012
Diet and Exercise	Adult obesity	National Center for Chronic Disease Prevention and Health Promotion	2010
	Food environment index	USDA Food Environment Atlas, Map the Meal Gap	2010-2011
	Physical inactivity	National Center for Chronic Disease Prevention and Health Promotion	2010
	Access to exercise opportunities	OneSource Global Business Browser, Delorme map data, ESRI, & US Census Tigerline Files	2010 & 2012
Alcohol and Drug Use	Excessive drinking	Behavioral Risk Factor Surveillance System	2006-2012
	Alcohol-impaired driving deaths	Fatality Analysis Reporting System	2008-2012
Sexual Activity	Sexually transmitted infections	National Center for HIV/AIDS, Viral Hepatitis, STD, and TB prevention	2011
	Teen births	National Center for Health Statistics	2005-2011
CLINICAL CARE			
Access to Care	Uninsured	Small Area Health Insurance Estimates	2011
	Primary care physicians	HRSA Area Resource File	2011
	Dentists	HRSA Area Resource File	2012
	Mental health providers	CMS, National Provider Identification	2013
Quality of Care	Preventable hospital stays	Medicare/Dartmouth Institute	2011
	Diabetic screening	Medicare/Dartmouth Institute	2011
	Mammography screening	Medicare/Dartmouth Institute	2011
SOCIAL AND ECONOMIC FACTORS			
Education	High school graduation	data.gov, supplemented with National Center for Education Statistics	2010-2011
	Some college	American Community Survey	2008-2012
Employment	Unemployment	Bureau of Labor Statistics	2012
Income	Children in poverty	Small Area Income and Poverty Estimates	2012
Family and Social Support	Inadequate social support	Behavioral Risk Factor Surveillance System	2005-2010
	Children in single-parent households	American Community Survey	2008-2012
Community Safety	Violent crime	Uniform Crime Reporting - FBI	2009-2011
	Injury deaths	CDC WONDER	2006-2010
PHYSICAL ENVIRONMENT			
Air and Water Quality	Air pollution - particulate matter ¹	CDC WONDER	2011
	Drinking water violations	Safe Drinking Water Information System	FY 2012-2013
Housing and Transit	Severe housing problems	HUD, Comprehensive Housing Affordability Strategy	2006-2010
	Driving alone to work	American Community Survey	2008-2012
	Long commute – driving alone	American Community Survey	2008-2012

¹ Not available for AK and HI.

CREDITS

Report Authors

University of Wisconsin-Madison
School of Medicine and Public Health
Department of Population Health Sciences
Population Health Institute

Bridget Catlin, PhD, MHSA
Amanda Jovaag, MS
Julie Willems Van Dijk, PhD, RN
Patrick Remington, MD, MPH

This publication would not have been possible without the following contributions:

Data

Centers for Disease Control and Prevention: National Center for Health Statistics and Division of Behavioral Surveillance
Dartmouth Institute for Health Policy & Clinical Practice

Research Assistance

Jennifer Buechner
Hyojun Park, MA
Elizabeth Pollock
Jennifer Robinson
Matthew Rodock, MPH
Anne Roubal, MS

Communications and Outreach

Burness Communications
Alison Bergum, MPA
Matthew Call
Kate Konkle, MPH
Kitty Jerome, MA
Karen Odegaard, MPH
Jan O'Neill, MPA

Design

Forum One, Alexandria, VA

Robert Wood Johnson Foundation

Abbey Cofsky, MPH – Senior Program Officer
Michelle Larkin, JD, MS, RN – Assistant Vice-President, Program Portfolios
Marjorie Paloma, MPH – Senior Policy Advisor
James S. Marks, MD, MPH – Senior Vice-President and Director, Program Portfolios
Joe Marx – Senior Communications Officer

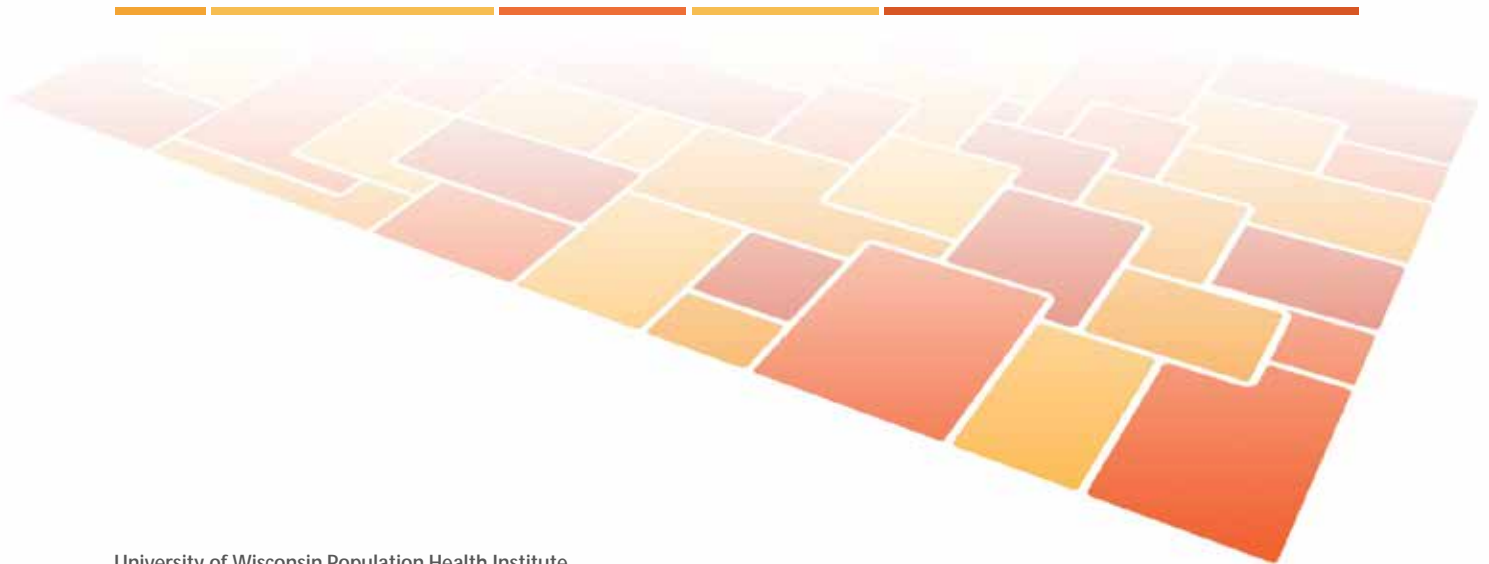
Suggested citation: University of Wisconsin Population Health Institute. *County Health Rankings 2014*.

INSIDE BACK COVER – INTENTIONALLY BLANK

County Health Rankings & Roadmaps

Building a Culture of Health, County by County

countyhealthrankings.org



University of Wisconsin Population Health Institute
610 Walnut St, #524, Madison, WI 53726
(608) 265-8240 / info@countyhealthrankings.org

