

**County Health
Rankings & Roadmaps**

Building a Culture of Health, County by County

A Robert Wood Johnson Foundation program

2014 *Rankings* California



A collaboration between the Robert Wood Johnson Foundation and the University of Wisconsin Population Health Institute.



Support provided by

Robert Wood Johnson Foundation



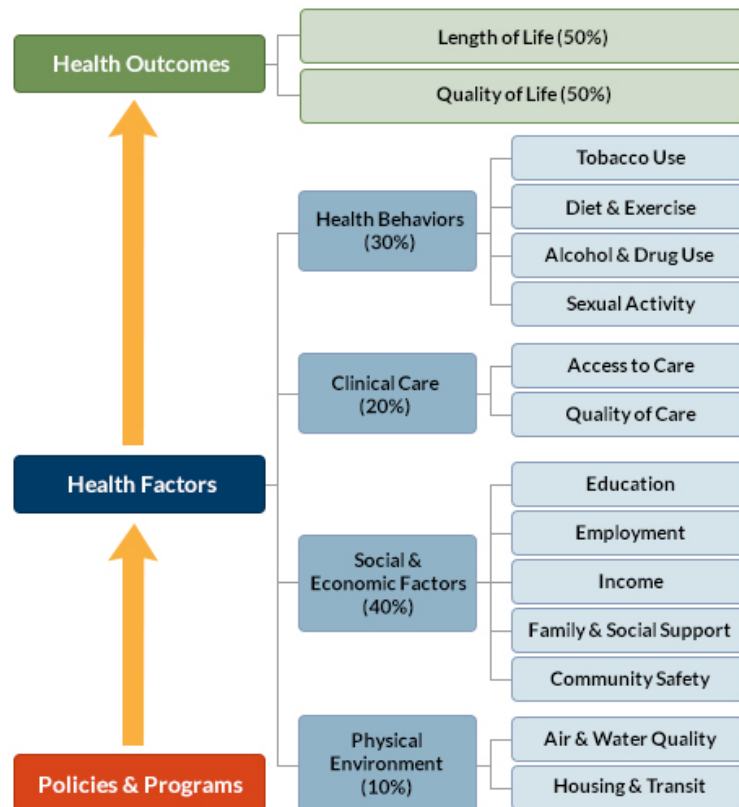
INSIDE FRONT COVER – INTENTIONALLY BLANK

INTRODUCTION

The *County Health Rankings & Roadmaps* program helps communities identify and implement solutions that make it easier for people to be healthy in their schools, workplaces, and neighborhoods. Ranking the health of nearly every county in the nation, the *County Health Rankings* illustrate *what we know* when it comes to what is making people sick or healthy. The *Roadmaps* show *what we can do* to create healthier places to live, learn, work, and play. The Robert Wood Johnson Foundation (RWJF) collaborates with the University of Wisconsin Population Health Institute (UWPHI) to bring this program to cities, counties, and states across the nation.

WHAT ARE THE COUNTY HEALTH RANKINGS?

The *County Health Rankings* measure the health of nearly every county in the nation. Published online at countyhealthrankings.org, the *Rankings* help counties understand what influences how healthy residents are and how long they will live. The *Rankings* look at a variety of measures that affect health, such as high school graduation rates, access to healthy foods, rates of smoking, obesity, and teen births. Based on data available for each county, the *Rankings* are unique in their ability to measure the overall health of each county in all 50 states. They have been used to garner support for local health improvement initiatives among government agencies, healthcare providers, community organizations, business leaders, policy makers, and the public.



HOW ARE PEOPLE USING THE RANKINGS?

- Ø Highlighting community success
- Ø Identifying root causes of poor health
- Ø Supporting policy change
- Ø Engaging communities in health improvement

For more information, visit countyhealthrankings.org

WHAT ARE THE ROADMAPS TO HEALTH?

The *Roadmaps to Health* help communities bring people together to look at the many factors that influence health, select strategies that work, and make changes that will have a lasting impact. The *Roadmaps* focus on helping communities determine what they can do and what they can learn from others.

What You Can Do

The *Roadmaps to Health* Action Center provides step-by-step guides, tools, and webinars to help groups working to improve the health of their communities. Community Coaches also provide customized consultation to local communities that have demonstrated a willingness to address factors that we know influence health, such as education, income, and community safety.

The Action Center also features *What Works for Health* – a searchable database of evidence-informed policies and programs that can improve health.

Learning From Others

Honoring the efforts of communities working at the forefront of health improvement, the Robert Wood Johnson Foundation annually awards the *RWJF Culture of Health Prize* to outstanding communities that are working toward better health. The *Prize* recognizes communities with strong and diverse partnerships that are coming together with a shared vision and commitment to address multiple factors that affect health and make lasting changes that create a culture of health for all. Visit countyhealthrankings.org or rwjf.org/prize to learn about the work of past prize winners.

At countyhealthrankings.org, we also feature stories from communities across the nation who have used data from the *County Health Rankings* or have engaged in strategies to improve health. For example, you can learn from the successes and challenges of the 30 *Roadmaps to Health* Community Grantees. These grantees are working to create positive policy or systems changes that address social and economic factors that influence how healthy people are and how long they live, such as education and community safety. You might also want to contact your local affiliate of United Way Worldwide, the National Business Coalition on Health, or the National Association of Counties - their national parent organizations have partnered with us to raise awareness and stimulate action to improve health in their local members' communities.

How can you get involved?

In communities large and small, people from all walks of life are taking ownership and action to improve health. Visit countyhealthrankings.org to get ideas and guidance on how you can take action in your community. Working with others, you can improve the health of your community.



The green map below shows the distribution of California's **health outcomes**, based on an equal weighting of length and quality of life.

Lighter colors indicate better performance in the respective summary rankings. Detailed information on the underlying measures is available on our web site.

HEALTH OUTCOMES RANKS



County	Rank	County	Rank	County	Rank	County	Rank
Alameda	20	Kings	41	Placer	2	Sierra	39
Alpine	NR	Lake	57	Plumas	34	Siskiyou	55
Amador	33	Lassen	36	Riverside	26	Solano	31
Butte	45	Los Angeles	28	Sacramento	30	Sonoma	12
Calaveras	32	Madera	43	San Benito	10	Stanislaus	35
Colusa	13	Marin	1	San Bernardino	40	Sutter	29
Contra Costa	17	Mariposa	24	San Diego	18	Tehama	50
Del Norte	56	Mendocino	44	San Francisco	22	Trinity	49
El Dorado	7	Merced	37	San Joaquin	42	Tulare	47
Fresno	46	Modoc	53	San Luis Obispo	9	Tuolumne	21
Glenn	25	Mono	19	San Mateo	4	Ventura	14
Humboldt	38	Monterey	23	Santa Barbara	16	Yolo	5
Imperial	27	Napa	15	Santa Clara	3	Yuba	52
Inyo	51	Nevada	8	Santa Cruz	11		
Kern	54	Orange	6	Shasta	48		

The blue map displays California's summary ranks for **health factors**, based on weighted scores for health behaviors, clinical care, social and economic factors, and the physical environment.

Lighter colors indicate better performance in the respective summary rankings. Detailed information on the underlying measures is available on our web site.

HEALTH FACTORS RANKS



County	Rank	County	Rank	County	Rank	County	Rank
Alameda	16	Kings	51	Placer	2	Sierra	27
Alpine	NR	Lake	52	Plumas	32	Siskiyou	42
Amador	20	Lassen	39	Riverside	38	Solano	24
Butte	33	Los Angeles	35	Sacramento	30	Sonoma	13
Calaveras	23	Madera	49	San Benito	28	Stanislaus	44
Colusa	37	Marin	1	San Bernardino	45	Sutter	36
Contra Costa	12	Mariposa	25	San Diego	18	Tehama	47
Del Norte	43	Mendocino	40	San Francisco	5	Trinity	46
El Dorado	9	Merced	50	San Joaquin	48	Tulare	57
Fresno	54	Modoc	29	San Luis Obispo	6	Tuolumne	21
Glenn	34	Mono	19	San Mateo	3	Ventura	17
Humboldt	26	Monterey	31	Santa Barbara	15	Yolo	10
Imperial	55	Napa	14	Santa Clara	4	Yuba	56
Inyo	22	Nevada	7	Santa Cruz	11		
Kern	53	Orange	8	Shasta	41		

Summary Health Outcomes & Health Factors Rankings

Counties receive two ranks:

- Health Outcomes
- Health Factors

Each of these ranks represents a weighted summary of a number of measures.

Health outcomes represent how healthy a county is while health factors represent what influences the health of the county.

Rank	Health Outcomes	Rank	Health Factors
1	Marin	1	Marin
2	Placer	2	Placer
3	Santa Clara	3	San Mateo
4	San Mateo	4	Santa Clara
5	Yolo	5	San Francisco
6	Orange	6	San Luis Obispo
7	El Dorado	7	Nevada
8	Nevada	8	Orange
9	San Luis Obispo	9	El Dorado
10	San Benito	10	Yolo
11	Santa Cruz	11	Santa Cruz
12	Sonoma	12	Contra Costa
13	Colusa	13	Sonoma
14	Ventura	14	Napa
15	Napa	15	Santa Barbara
16	Santa Barbara	16	Alameda
17	Contra Costa	17	Ventura
18	San Diego	18	San Diego
19	Mono	19	Mono
20	Alameda	20	Amador
21	Tuolumne	21	Tuolumne
22	San Francisco	22	Inyo
23	Monterey	23	Calaveras
24	Mariposa	24	Solano
25	Glenn	25	Mariposa
26	Riverside	26	Humboldt
27	Imperial	27	Sierra
28	Los Angeles	28	San Benito
29	Sutter	29	Modoc
30	Sacramento	30	Sacramento
31	Solano	31	Monterey
32	Calaveras	32	Plumas
33	Amador	33	Butte
34	Plumas	34	Glenn
35	Stanislaus	35	Los Angeles
36	Lassen	36	Sutter
37	Merced	37	Colusa
38	Humboldt	38	Riverside
39	Sierra	39	Lassen
40	San Bernardino	40	Mendocino

Rank	Health Outcomes	Rank	Health Factors
41	Kings	41	Shasta
42	San Joaquin	42	Siskiyou
43	Madera	43	Del Norte
44	Mendocino	44	Stanislaus
45	Butte	45	San Bernardino
46	Fresno	46	Trinity
47	Tulare	47	Tehama
48	Shasta	48	San Joaquin
49	Trinity	49	Madera
50	Tehama	50	Merced
51	Inyo	51	Kings
52	Yuba	52	Lake
53	Modoc	53	Kern
54	Kern	54	Fresno
55	Siskiyou	55	Imperial
56	Del Norte	56	Yuba
57	Lake	57	Tulare

Not Ranked: Alpine

2014 County Health Rankings: Measures, Data Sources, and Years of Data

	Measure	Data Source	Years of Data
HEALTH OUTCOMES			
Length of Life	Premature death	National Center for Health Statistics	2008-2010
Quality of Life	Poor or fair health	Behavioral Risk Factor Surveillance System	2006-2012
	Poor physical health days	Behavioral Risk Factor Surveillance System	2006-2012
	Poor mental health days	Behavioral Risk Factor Surveillance System	2006-2012
	Low birthweight	National Center for Health Statistics	2005-2011
HEALTH FACTORS			
HEALTH BEHAVIORS			
Tobacco Use	Adult smoking	Behavioral Risk Factor Surveillance System	2006-2012
Diet and Exercise	Adult obesity	National Center for Chronic Disease Prevention and Health Promotion	2010
	Food environment index	USDA Food Environment Atlas, Map the Meal Gap	2010-2011
	Physical inactivity	National Center for Chronic Disease Prevention and Health Promotion	2010
	Access to exercise opportunities	OneSource Global Business Browser, Delorme map data, ESRI, & US Census Tigerline Files	2010 & 2012
Alcohol and Drug Use	Excessive drinking	Behavioral Risk Factor Surveillance System	2006-2012
	Alcohol-impaired driving deaths	Fatality Analysis Reporting System	2008-2012
Sexual Activity	Sexually transmitted infections	National Center for HIV/AIDS, Viral Hepatitis, STD, and TB prevention	2011
	Teen births	National Center for Health Statistics	2005-2011
CLINICAL CARE			
Access to Care	Uninsured	Small Area Health Insurance Estimates	2011
	Primary care physicians	HRSA Area Resource File	2011
	Dentists	HRSA Area Resource File	2012
	Mental health providers	CMS, National Provider Identification	2013
Quality of Care	Preventable hospital stays	Medicare/Dartmouth Institute	2011
	Diabetic screening	Medicare/Dartmouth Institute	2011
	Mammography screening	Medicare/Dartmouth Institute	2011
SOCIAL AND ECONOMIC FACTORS			
Education	High school graduation	data.gov, supplemented with National Center for Education Statistics	2010-2011
	Some college	American Community Survey	2008-2012
Employment	Unemployment	Bureau of Labor Statistics	2012
Income	Children in poverty	Small Area Income and Poverty Estimates	2012
Family and Social Support	Inadequate social support	Behavioral Risk Factor Surveillance System	2005-2010
	Children in single-parent households	American Community Survey	2008-2012
Community Safety	Violent crime	Uniform Crime Reporting - FBI	2009-2011
	Injury deaths	CDC WONDER	2006-2010
PHYSICAL ENVIRONMENT			
Air and Water Quality	Air pollution - particulate matter ¹	CDC WONDER	2011
	Drinking water violations	Safe Drinking Water Information System	FY 2012-2013
Housing and Transit	Severe housing problems	HUD, Comprehensive Housing Affordability Strategy	2006-2010
	Driving alone to work	American Community Survey	2008-2012
	Long commute – driving alone	American Community Survey	2008-2012

¹ Not available for AK and HI.

CREDITS

Report Authors

University of Wisconsin-Madison
School of Medicine and Public Health
Department of Population Health Sciences
Population Health Institute

Bridget Catlin, PhD, MHSA
Amanda Jovaag, MS
Julie Willems Van Dijk, PhD, RN
Patrick Remington, MD, MPH

This publication would not have been possible without the following contributions:

Data

Centers for Disease Control and Prevention: National Center for Health Statistics and Division of Behavioral Surveillance
Dartmouth Institute for Health Policy & Clinical Practice

Research Assistance

Jennifer Buechner
Hyojun Park, MA
Elizabeth Pollock
Jennifer Robinson
Matthew Rodock, MPH
Anne Roubal, MS

Communications and Outreach

Burness Communications
Alison Bergum, MPA
Matthew Call
Kate Konkle, MPH
Kitty Jerome, MA
Karen Odegaard, MPH
Jan O'Neill, MPA

Design

Forum One, Alexandria, VA

Robert Wood Johnson Foundation

Abbey Cofsky, MPH – Senior Program Officer
Michelle Larkin, JD, MS, RN – Assistant Vice-President, Program Portfolios
Marjorie Paloma, MPH – Senior Policy Advisor
James S. Marks, MD, MPH – Senior Vice-President and Director, Program Portfolios
Joe Marx – Senior Communications Officer

Suggested citation: University of Wisconsin Population Health Institute. *County Health Rankings 2014*.

INSIDE BACK COVER – INTENTIONALLY BLANK

County Health Rankings & Roadmaps

Building a Culture of Health, County by County

countyhealthrankings.org



University of Wisconsin Population Health Institute
610 Walnut St, #524, Madison, WI 53726
(608) 265-8240 / info@countyhealthrankings.org

